



WE HAVE YOUR SLASHER NEEDS COVERED.....SMALL OR LARGE.

A NEW DAKEN FINISHING MOWER FOR THE KERRS

Goodwin Kenny not only sell the larger mowers, we also sell small mowers to suit our customer's needs. Goodwin Kenny Gunnedah Salesman, Glenn Furner, sourced this new Daken Ag 4' finishing mower for Rod Kerr. To make better use of Rod's little tractor he also purchased a 4' Box Blade to help with the landscaping and tidying up jobs around the house yard. Pictured at right is Rod Kerr and his son Cameron with the Daken finishing mower.

Dakenag



CALROSSY ANGLICAN SCHOOL - AGRI INDUSTRY TRADE TRAINING CENTRE - "TANGARRA" TAMWORTH

As the school farm has been developed over last year the need to clean laneways and slash top grazing areas has grown. A Jarrett MD135 (1.35m wide) slasher to fit their 30hp tractor was seen as the right tool to get the grass under control - with left hand offset the machine can slash close along the fence lines in the laneways.

Pictured left is Goodwin Kenny Tamworth's Salesman Tony Housden and Darren Avery.



STEVE MAUNDER'S NEW HOWARD SLASHER

Steve Maunder of Undoolya, Boggabri chose the Howard Nugget 6' slasher for its clean design and the Howard reputation. Steve will use the new slasher for yard and driveway maintenance on the property. Jacko the "Gopher" is pictured at right at the start up with the new slasher.



A HOWARD SPEARHEAD MULTICUT 460 SLASHER FOR THE HAINS

A Spearhead MultiCut 460 was the choice for Ross and Rohan Hain of Coonabarabran when looking for a heavy duty 15' slasher for pasture topping and other farm maintenance jobs. The Spearhead range of slashers are English built and supported by Howard Australia Pty Ltd. With a range from 4.2 metres through to 12.1 metres and suitable for tractors up to 350 horse power - the Spearhead range has something for everybody. Pictured at left with the slasher is Goodwin Kenny Gunnedah Salesman Glenn Furner and Ross Hain.



HOWARD FALC ALCE MULCHER

Allows a finer chop of material for improving soil fertility. This mulcher can be used as an alternative to a slasher.

NOW IN STOCK



NEW HOLLAND 1030
28HP with Loader



NEW HOLLAND RUSTLER
2 or 4 Passenger, Petrol or Diesel, 14HP to 23HP



NEW HOLLAND WORKMASTER
45HP or 55HP



NEW HOLLAND TT with Loader
55HP & 75HP 2WD & 4WD



NEW HOLLAND TD80D, T5050,
T7.170, T7.185
Range from 80hp to 140hp



Tony Housden
TAMWORTH



Glenn Furner
GUNNEDAH

**NEW HOLLAND have the range
of tractors to suit your mowing,
small acre and farming needs!**



GOODWIN KENNY

Tractor and Farm Machinery Dealers since 1962

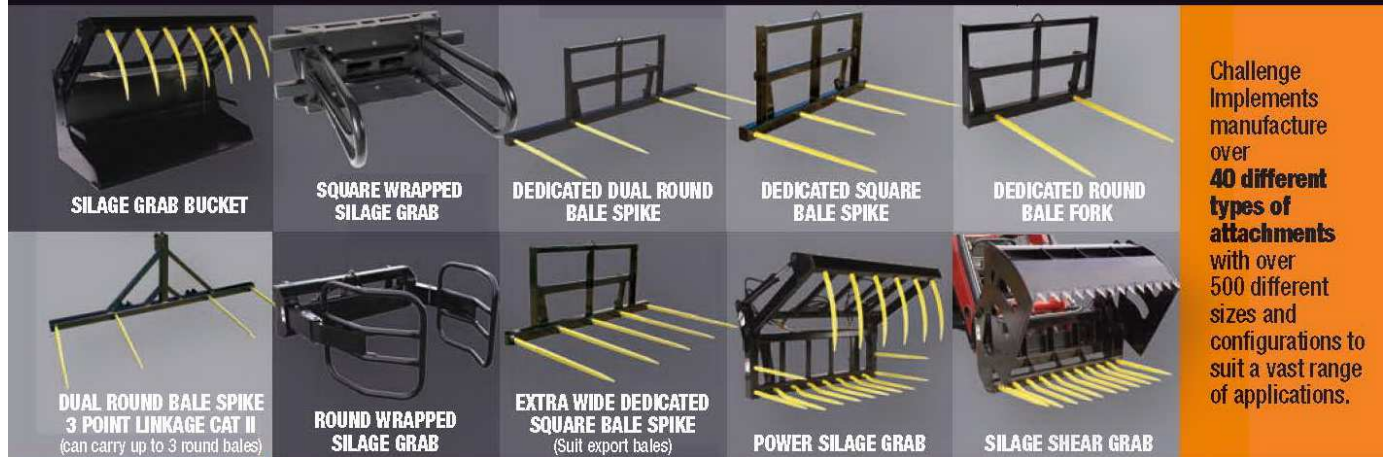
246 Bridge Street
TAMWORTH 2340
02 6765 5244
Fax 02 6765 3377

42 Mullaley Road
GUNNEDAH 2380
02 6742 5777
Fax 02 6742 0671

139 Miller Street
ARMIDALE 2350
02 6772 8124
Fax 02 6772 8124

visit our website at: www.goodwinkenny.com.au

Check out the extensive range of hay and silage handling equipment from **Challenge Implements** this harvest season!



KRONOS FLAIL SHREDDERS

Features:

- ◆ Bypy 2200: 328hp single speed gearbox
- ◆ 13/4" spline, SFT drive shaft
- ◆ 6+6 SPB cogged belt side drive
- ◆ Reversible, Boron steel "Y" flails
- ◆ Dual comb counter blades
- ◆ Cat III, 3pt linkage
- ◆ Rear gauge wheels
- ◆ All wheels fully adjustable across machine width
- ◆ Replaceable wear and tear sheet
- ◆ Full width (front) crop and safety guards
- ◆ Rear opening doors for ease of servicing and cleaning
- ◆ Sliding top link on all models



DAVIMAC

The Davimac SD Drills heavy duty construction, high quality drive system and a powder coated finish for a superior, long lasting protection ensures a quality built product for the farmer who only wants the best.



Optional disc coulters have a large 400mm (16") disc. Teflon lined pivot bushes eliminates greasing. Extra large hub bearing with quad lip seals and separately sprung disc coulters. Accurate metering system and precise depth control. Heavy Duty flotation tyres (not light car tyres or 4 wheel drive tyres commonly seen). Optional Small Seed Box can be fitted for under-sowing or sowing at rates below 4kg per ha. Excellent time layout for the best possible trash flow. Quality in cab mounted acre meter as standard.

Call Tony Housden for more information.

SILVAN 800 LITRE PASTURE PAK

6 metre Field Boom, Hose Reel and Gun.



SPECIAL PRICE, ONE ONLY \$5,500.00 Inc GST

AGPOINT FOLLOWING HARROWS

Part No	
HA3X3FH.....	\$146.47
HA4X3FH.....	\$199.03
HA3X5FH.....	\$236.21
HA4X5FH.....	\$308.41



MURRAY 8020 STUMP JUMP HARROW
4Wide x 5Deep..... \$451.00



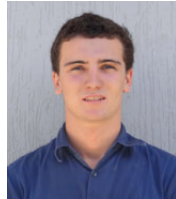
TAMWORTH - 6765 5244



David Hartmann



Peter Mackay



Cameron Young



Mark Kenny



Ken Mack



Jim Vincent



Keith McPhie

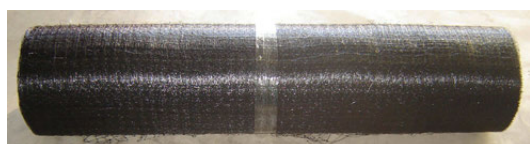
GUNNEDAH - 6742 5777

ARMIDALE 67728124



NEW HOLLAND TWINE & NET

	Part No:	Details	Size	Inc GST
LARGE	87463634	Big Square Twine	2 x 1100m	\$107.34
SMALL	87463635	Small Square Twine	2 x 2000m	\$ 86.63
BLACK	73340502	Net	1.2 x 1500m	\$371.78
WHITE	73322131	Net	1.23 x 3600m	\$497.33



We are Bare-Co
Stockists.
Call in and see our full
range of products.



TOY OF THE MONTH

FORD GOLDEN JUBILEE TRACTOR
WITH FLARE BOX WAGON



Code:
ERT13773

\$56.60
inc GST



Great
Western
Tillage

See us for all your Points & Tips.
Now available -
John Shearer Reverse Chisel Points.

COMBINE

POINTS



BOLT ON

KNOCK ON

PART NO

CC17204

CC17205

CC17206

CC17207

MR20004

MR20005

MR20006

MR20007

INC GST

\$ 5.13

\$ 6.19

\$ 6.48

\$ 8.00

\$ 5.35

\$ 5.87

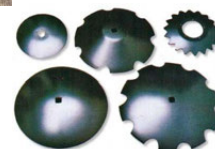
\$ 6.82

\$ 7.55

Talk to us about parts for IHC 3.4 and IHC 3.5 Disc Ploughs.



We have Great Western Tillage
Discs available to suit all
types of ploughs.



GUIDANCE SYSTEMS

The benefits of guidance are clear. More productivity, less wastage and greater efficiency. We stock a complete range of guidance solutions and our expertise means you will get the most out of what the technology has to offer.



Part No	Description	Inc GST
ZTN92000-60	New Holland Ez-Guide 250 Lightbar Guidance System with Patch Antenna (accurate to 0.5 to 1.0 metre)	\$2,153.80
ZTN92010-00	Ag15 Antenna Upgrade kit for EZ250 (accurate to 0.5 metres)	\$ 761.20
ZTN94000-60	FM750 Touch Screen Display	\$4,400.00
ZTN62000-52	Ez-Steer T2 System to suit FM750/FM1000	\$5,016.00
87298854	New Holland Ez-Guide 500 Lightbar Guidance System with AG15 Antenna Kit. (accurate to 0.3 to 0.45 metres)	\$3,490.00
ZTN62000-50	Ez-Steer 500 T2 Terrain Tech	\$4,225.00

We are the authorised dealers for

DAVIMAC



Don't forget that our Tamworth & Gunnedah stores are open Saturday mornings from 8am to 12pm.

MONTHLY WINNERS

Congratulations to our New Holland Cap Winners:

DJ & PR Wall - Walcha, Red Bobs Farms - Curlewis, K & C Clark - Delungra

This month we have 3 NEW HOLLAND Caps to give away - simply return your payment by Thursday 26th April 2012, to go in the draw.

We would also remind customers that we accept Visa & MasterCard over the phone and Debit cards may be used at all our Branches.

All payments by these methods are included in the monthly draw.

Electronic/Internet Payments on the last day of the month cannot be allocated until the next day - it would assist us greatly if payments could be made prior to the last day of the month to allow receipting and allocation to accounts prior to Month End.....thank you.



For customers that use Internet Banking, our bank account details are:

Commonwealth Bank

BSB: 062 602

Account Number : 00 272 029

Please use your account number, name or invoice number as a reference.

JOKE OF THE MONTH

Splinters in Her Crotch!

A woman who was a tree hugger purchased a piece of timberland near Collie, WA .

There was a large tree on one of the highest points in the tract. She wanted a good view of the natural splendour of her land, so she started to climb the big tree. As she neared the top she encountered a spotted owl that attacked her. In her haste to escape, the woman slid down the tree to the ground and got many splinters in her crotch.

In considerable pain, she hurried to a local ER to see a doctor. She told him she was an environmentalist, and how she came to get all the splinters. The doctor listened to her story with great patience and then told her to go wait in the examining room and he would see if he could help her.

She sat and waited three hours before the doctor reappeared.

The angry woman demanded, "What took you so long?"

He smiled and then told her, "Well, I had to get permits from the Environmental Protection Agency, the Forest Service, and the Bureau of Land Management before I could remove old-growth timber from a "recreational area" so close to a waste treatment facility. I'm sorry, but due to Bob Brown and his Green Party policies they turned me down!!"



GOODWIN KENNY GOLF DAY AT GUNNEDAH



As most would be aware from previous newsletters, Mark and Peter Kenny at Gunnedah are both keen golfers and for a number of years, Goodwin Kenny have been sponsoring a Golf Day.


This year is no exception with the sponsored days being Saturday 28th April, which is the Monthly Medal Stroke Round, and Sunday the 29th April, which is a Benefit Day for the Gunnedah Physical Culture Club, which Mark's daughters are members of. Both days have some great prizes up for grabs and the boys would love to see avid golfers there for a round of golf, a chat or a beer! Cheers, Pete.

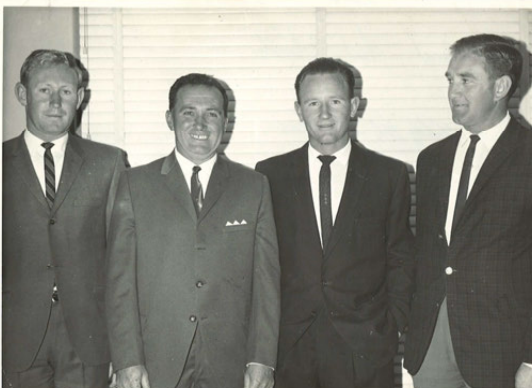


JUST TO KEEP YOU UP TO DATE:

- Prices are going up all the time! We try to maintain a fair and reasonable charge for our Service Technicians and have not altered our rates since October 2009. After maintaining this rate of \$90.00/hour for over 2 years, we have now increased our Labour Rate to \$95.00/hour from 1st March 2012.

- The Great Nundle Dog Race is on again on 6th May 2012 and will be the 33rd event of this kind. It is a major fundraiser for Nundle Public School and should be a fun day out with lots of events....for more details go to www.nundle.info/nundle/dograce or call Nundle Public School on 6763253.

the great nundle
dog race 



More History.....This photo shows Alan Bird, Aubrey Goodwin, Pat Kenny and George Blakely (Claas Header rep) and was taken in the 1960's. Alan Bird was contacted to see if he could recall the story behind the photo. Fortunately, Alan was in Tamworth last week and called in to see us at Goodwin Kenny. He thinks the photo was taken at Aub and Joyce's home and the "boys" were all dressed up for a function. Alan was employed by Fiat in 1962 as a Sales Rep, he then worked for Goodwin Kenny in 1963 as a Sales Rep, and returned to Fiat as an Agricultural/Industrial Rep/Manager in 1963 until 1975. Alan had a close working relationship with Aub, Joyce and Pat when the business started in 1962 and assisted them to grow the business attending many agricultural crawler deliveries in this area. Alan was also able to tell Gina and I a little more about those early days when Aub did a lot of share-farming making

hay on any land that could be leased along the Peel River. Alan still has a passion for Fiats and is looking for a Fiat 211RB to restore for his farm. We are still looking for any stories and photos for the 50 Year History...so call in or email to sgoodwin@goodwinkenny.com.au



Susan Goodwin....