

GOODWIN KENNY

Tamworth • Gunnedah • Armidale



NEWSLETTER

DECEMBER 2012

As Robert Worth's contracting business around Gloucester continues to grow; he was in need of a third tractor to make tasks easier for the hay contracting. Robert needed a tractor that was quick to get on and off, wet clutch with electro hydraulic shuttle for ease of use and speed of operation handling round bales. This new tractor also needed to be over 100Hp to be useful for ground preparation tasks as well. He chose the New Holland T5060 ROPS, with 106Hp, 24F x 24R wet clutch transmission. The tractor was fitted with a Challenge L3600 Front End Loader chosen because of the clean lines of visibility. The New Holland T5060 joins a New Holland TD80 ROPS, a New Holland T6070 and eight other assorted Fiat tractors on the family farm. Pictured is Robert Worth and Tony Housden, Goodwin Kenny Salesman.



After 20 years without a working tractor on Ted Barton's family grazing property at Moonbi, Ted decided that a new Tractor and Front End loader with 4in1 bucket would make various tasks a lot easier and free up some time. The New Holland TT75 with Challenge Front End Loader was chosen as a good basic tractor without any complicated operating requirements. The loader has a 4in1 bucket for general work and a large square bale spike for handling bales to feed the cows. A Daken Post Hole digger finished off the package to help with fencing repairs and upgrading. Pictured at left is Ted Barton.



Craig Thomson is pictured at the start up of his new New Holland BR7060 round baler. Craig will use the New Holland BR7060 on his own farm as well as in his contracting operations in the Boggabri area and Craig can be contacted on 0428 436519. Craig has traded a John Deere 467 round baler which is now detailed and ready for inspection at Goodwin Kenny Gunnedah.



Daniel Cavanagh is pictured with his recently purchased New Holland Workmaster 55 tractor fitted with a Howard Alce 1.6 metre mulcher. The Workmaster also has a Challenge front end loader with 4 in 1 bucket. Dan will be looking for contract work, slashing, mulching and general clean up jobs and can be contacted on 0429 040539.



A new New Holland T6070 FWA cab tractor was the choice for Ron and Meg Kirby, "Roanoke", Curlewis. Fitted with a New Holland "L series" front end loader and New Holland "Auto Pilot" full hydraulic steering the T6070 is prepared for the challenges of spraying, prickle chaining and a host of other activities that Ron will require of it in the coming seasons. The Challenge front end loader has been fitted with a camera to ensure a clear and safe view whilst operating with pallet forks etc, the camera image is displayed in colour through the steering monitor. Pictured at delivery is Glenn Furner, Goodwin Kenny Salesman and Ron Kirby.



As 2012 draws to a close we would like to extend Seasons Greetings to all our customers and thank you for your business once again this year. We would also like to extend our thanks to our staff for their efforts this year and wish them and their families all the best for Christmas and the coming year.

We are all looking forward to a few days off over Christmas - see our Christmas/New Year Business hours on the back page. We hope 2013 brings good weather, good health and good times for all. Have a safe and Happy Christmas.

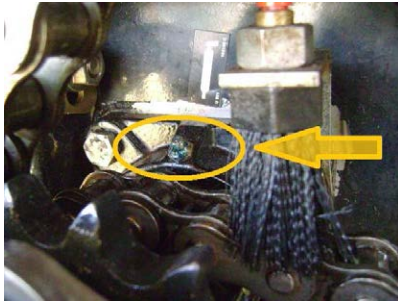
Susan Goodwin and Peter & Mark Kenny

Seasons Greetings



New Holland Round Baler Maintenance

Have you seen this Grease Nipple ??



Recently our Hay Technician, Merv Leard, has been to two balers because this little grease nipple was neglected. One baler caught fire and almost burnt out when the bearing destroyed itself, grabbed the shaft and then proceeded to destroy the housing and then bent the drive shaft. This bearing is hidden away a little and is not prominent, and is not greased by the capillary system. It should be greased by hand every eight (8) hours/daily.

Please take the time to re-read the maintenance section of the Operators Manual and ensure you have greased, lubed and adjusted all the critical operating points on your baler. If you are not sure about an aspect of the baler's maintenance or excess wear in a part, please call our Tamworth or Gunnedah Workshops where the staff will assist with your questions.



Round Baler Roller Chain

Renold Standard Duty
Part No. 73322244

10' RC60 Chain
with joiner

\$61.84
including GST



Like your old SICKLE BAR Mower Conditioner?



Would you like a new one?

For those farmers who have a specific need or desire to run a Sickle Bar mower conditioner, New Holland currently have a small number of 488 Side Pull mower conditioners in Australia available for delivery. These machines have a cutting width of 2.82m (9'3"), Chevron pattern rubber conditioning rollers, Bolt on knife sections. With an operating speed of up to 13km/h the 488 only requires a tractor with 35 pto Hp.



Call us today for a price for this seasons delivery.



Daniel Cavanah's new New Holland Workmaster 55 tractor is pictured here operating a Howard Alce 1.6 metre mulcher in Canola at Spring Ridge. Goodwin Kenny have Howard Alce 1950 and Alce 2300 mulchers in stock.



Contact Glenn Furner at Gunnedah
on 67425 777
and Tony Housden at Tamworth
on 67655 244



Check out:
[Facebook.com/Goodwinkenny](https://www.facebook.com/Goodwinkenny)

Goodwin Kenny has been successful winning the Tender to replace the Armidale Dumaresq Councils Airport mower. The Tender specification excluded many machines, ultimately the Council chose the Fieldquip 12' Flex Wing Topper.

This machine is made by Major in Ireland, with 4 rotors with twin blades driven by a geared drive train with rubber cushion couplings and a torque clutch, the machine is very robust. The twin blades produce a degree of mulching which will help reduce the cuttings quicker causing less grass that can blow around the airfield. The hydraulic folding wings have the ability to mow hanging down to 15degrees or sitting up to 25degrees as well, this is very useful given the undulating nature and flat bottom table drains on the airport. Picture is the mower fitted to the New Holland TD60.



SPARE PARTS

TAMWORTH - 6765 5244



David Hartmann



Peter Mackay



Colin Daye

GUNNEDAH - 6742 5777

ARMIDALE - 6772 8124



Mark Kenny



Ken Mack



Keith McPhie



**BALER TWINE
&
ROUND BALER NET
IN STOCK**

Also available for
Small Square and
Large Square Balers



AGPOINT FOLLOWING HARROWS

Part No	Price Inc GST
HA3X3FH.....	\$146.47
HA4X3FH.....	\$199.03
HA3X5FH.....	\$236.21
HA4X5FH.....	\$308.41



MURRAY 8020 STUMP JUMP HARROW

4 wide x 5 deep
\$451.00 inc GST



Talk to Spare Parts about
getting a new Bare -Co ROPS
and Canopy for your tractor.
Be safe and sun safe!



**Tamworth & Gunnedah Branches are open Saturday
mornings from 9am to 12pm.**

NEW HOLLAND AND FORD TOYS

Come in and see our range of New Holland & Ford agricultural
toys...if we don't have what you want we will try and
get it in for you, but hurry Christmas is very soon!



\$66.99



\$35.64



\$51.98

Part No	Description	Scale	Price Inc GST
ERT35115DS	New Holland Small Tractor	2.5"	\$3.47
ERT35123DS	New Holland Small Tractor	4.3"	\$8.09
ERT13782	T8050 with Sprayer	1:64	\$18.48
ERT42099DS	TS135A Tractor	1:32	\$23.05
ERT13754DS	8670 & T8040 Past & Present Tractor Set	1:64	\$26.57
ERT13723DS	T9060 Tractor with Scrapers	1:64	\$28.88
ERT13749	Ford 7000 Tractor	1:32	\$28.88
ZFN12946	Hay Wagon	1:16	\$34.65
ERT13774	T8020 with Forage Harvester & Wagon	1:64	\$35.64
ERT13716DS	T7060, T9060 & T8050 Tractor Set	1:64	\$36.96
ERT13759DS	T8050 Tractor	1:32	\$37.74
ERT42171	Big Square Baler	1:32	\$44.06
ERT13795	FR9090 Forage Harvester & Wagons	1:64	\$47.19
JLE558DS	TC33DS PINK Tractor	1:16	\$51.98
ERT13753DS	TR88 & CR9040 Set Past & Present Tractor	1:64	\$53.13
ERT13773	Ford Golden Jubilee tractor With Flare Box Wagon	1:16	\$60.84
ERT13721DS	Manure Spreader	1:16	\$66.99
ERT13748A	60th Anniversary Set T7050, CR9070, H8060 *Diecast Metal	1:64	\$66.99
ERT13730	Forage Harvester	1:32	\$71.61
ERT13724DS	CR9060—Dealer Edition	1:32	\$92.98



\$300.30



\$94.00



\$53.50



\$83.94

Don't forget to ask
about our range of
Pedal Ride-On
Tractors and
attachments

NEW



\$83.94

MONTHLY WINNERS

Congratulations to our New Holland Cap Winners:

NJ & NG Watts - Bingara, B Stoltenberg - Boggabri, Allan Cherry, AGVAC - Gunnedah.

This month we have 3 NEW HOLLAND Plush Toy Tractors to give away - simply return your payment by Friday 21st December 2012, to go in the draw. The Plush Toy Tractors are available from Spare Parts for \$11.00 including GST.



We would also remind customers that we accept Visa & MasterCard over the phone and Debit cards may be used at all our Branches. All payments by these methods are included in the monthly draw.

Electronic/Internet Payments on the last day of the month cannot be allocated until the next day - it would assist us greatly if payments could be made prior to the last day of the month to allow receipting and allocation to accounts prior to Month end.....thank you.

For customers that use Internet Banking, our bank account details are:

Commonwealth Bank

BSB: 062 602

Account Number : 00 272 029

Please use your account number, name or invoice number as a reference.

JOKE OF THE MONTH



CHRISTMAS/ NEW YEAR BUSINESS HOURS

Friday	21st December 2012	8am to 5pm
Saturday	22nd December 2012	CLOSED
Sunday	23rd December 2012	CLOSED
Monday - Christmas Eve	24th December 2012	CLOSED
Tuesday - Christmas Day	25th December 2012	CLOSED
Wednesday - Boxing Day	26th December 2012	CLOSED
Thursday	27th December 2012	8am to 5pm
Friday	28th December 2012	8am to 5pm
Saturday	29th December 2012	9am to 12pm
Sunday	30th December 2012	CLOSED
Monday - New Years Eve	31st December 2012	8am to 5pm
Tuesday - New Years Day	1st January 2013	CLOSED
Wednesday	2nd January 2013	8am to 5pm

Just to keep you up to date:

On 17th November we held our 50th Anniversary Dinner and hosted our staff (past and present), suppliers, customers family and friends. We were pleased to have the opportunity to relate the history of the company, thank our customers, acknowledge our current staff and honour a number of staff who have served the company over many years.

There were nine staff with over 10 years service and another nine staff members with over 15 years service. In total these 18 people had a total of 303 years of Service to Goodwin Kenny (see our 50th Anniversary Special Edition).

To survive 50 years in business you need good staff, proactive suppliers and great customers - our thanks to all who have been involved with our business over the past 50 years.

.....Susan Goodwin



Tony, Lara & Sharon Housden



Ted & Marj Fanker



Con & Jenny Smit



Georgina & Allan Kedzlie



Judith & Rob Frend



Wendy & Bruce Coxhead



Hal & Shirley Burke



Ian, Lachie & Kim McArthur



Kerry & Noel Swain



Kristen Searle, Jamie Rutter
& Chloe Chester



Warren & Audrey Thibault



Susan and Gina Goodwin
& George Cromie