



David Sharpe is pictured (right) at the delivery of his new New Holland Workmaster 45 tractor. David selected a New Holland AP30 front end loader to complete the maintenance package. The new New Holland Workmaster will be used on David's Boggabri property doing general maintenance and cattle feeding duties when required. The Workmaster series of tractors feature an eight forward/eight reverse synchro shuttle transmission with independent PTO.



Rod Roseby, Roseby Farming, Quirindi has chosen to replace his old rolabar rake with a new New Holland Rolabar rake, the new 258 Rolabar is slightly wider at 9'6" and features Hydraulic drive for reliable raking. The hydraulic drive allows you to tailor the basket speed to the ground speed to ensure even windrows under varying crop conditions. Rod purchased the rake some months ago, but the dry weather meant no dry land hay making around Quirindi until this late in the season. Pictured is Rod Roseby and Goodwin Kenny Salesman Tony Housden

Following the breakdown of an old mower, Armidale Dumaresq Council needed a mulcher to cut grass on the areas adjacent to the bicycle ways and other parkland areas around the city. After demonstration of the Nobili VKD210 council staff were impressed with

the fine cut of the light flails, adjustability of the rear roller and the finished result. The full width roller reduces the chance of damage to the edges of the cycleway. Council's parks and garden staff were also very impressed with the lack of windrowed grass left by the mulcher, the old mower left windrows that were problematic and somewhat untidy looking. Pictured left is operator Roland Gordon and Graden Scott.



A Sip ROTO 215 was the choice when Bazil Bendeich decided to purchase his own mower. The Sip 215 is a 5 disc machine cutting a 7.0' swath and can be retro fitted with a flail type conditioner at a later stage should Bazil find it necessary. This machine will be used on Bazil's Tambar Springs property "The Yarrans" for making dryland Lucerne hay. Bazil is pictured at start up.



Garry Burgess from Timbumburi was looking for a smaller, more manoeuvrable linkage sprayer to compliment the farm's larger trailed unit. The 800 litre Silvan unit with a 10 metre Fieldmaster boom was chosen for its robust boom, the Fieldmaster has protected nozzles, boom suspension and cable winder height adjustment which Garry said he would utilize when spraying crops at different growth stages. The Silvan 800 litre tank has a 15 litre Fresh water hand wash tank, 3 section manual controls, easy clean main filter and individual nozzle filtering for reduced downtime.



Andrew Bell from Kootingal had been using Contract Sprayers for a number of years and with the recent weather decided that having his own sprayer would be more time efficient. Andrew chose the Silvan 800 litre with 8 metre Field boom.

We have received a number of photos from Neville and Pat White who were the owners of Cab Engineering at Gunnedah. Neville White worked for Goodwin Kenny in 1967, then he and his wife, Pat, started their own engineering business, Cab Engineering. Neville and Pat travelled from Leeton to Tamworth in November last year to attend the Goodwin Kenny 50th Anniversary and enjoyed a couple of days catching up with old acquaintances. They told us that the machines were not sold with cabins at that time, but they had kept a photographic record of everything that they built and fitted. (And lucky for us they still had them and emailed them to us!) The Fiat 750 and Fiat 1000 tractors were sold in the "seventies" and the cabs made by Nev would certainly have enhanced operator comfort. The tractor cabs of today have all the "creature comforts" and have come a long way in 30 years.



Tyres

They are expensive, they are essential, it is imperative that you get the pressures correct and keep them in good condition.

Tyre pressure has a big impact on a number of things, mainly soil compaction through ground contact pressure, wheel slip/pulling ability, load carrying capacity and tyre wear.

Ply ratings have mainly disappeared being replaced by Load Index (LI), the weight each tyre can carry at a specific inflation pressure.

If you need to replace a tyre for whatever reason it is vitally important that you get a replacement with the same rolling diameter, the correct speed rating and the correct Load Index.

This is doubly important for Front tyres if the tractor has a Front End loader fitted, as a low load index tyre will reduce the lifting of the capacity tractor.

Inflation pressures – with modern front wheel drive tractors there are generally no standard tyre inflation pressures in the operators manual.

The tyre pressure is set to create the correct Lead and Lag (Inter-axle ratio) determined by the rolling diameter unloaded. The pressures can be adjusted so long as the Inter axle ratio is maintained within the specified parameters.

Pumping tyres up or letting them down alters this ratio between the Front and rear wheel diameters and getting this wrong can lead to expensive front axle/differential and transmission repairs.

As always if you are not sure about tyres, pressures or Interaxle Ratios for your machinery, feel free to contact one of our service departments for advice and assistance. A reputable tyre company will also be a good source of set-up information as well.



HOWARD MACHINES IN STOCK



Howard Falc Alce Mulcher allows a finer chop of material for improving soil fertility. This mulcher can be used as an alternative to a slasher.

1950 - \$10,175 inc GST
2300 - \$11,275 inc GST
3200 - \$15,840 inc GST



HOWARD NUGGET SLASHERS
5' & 6' in stock at Tamworth and Gunnedah
ASK ABOUT SPRAYRITE SPRAYERS



HOWARD KRONOS FLAIL SHREDDER
In stock at Gunnedah



We have a large display of New Holland tractors at Tamworth from 20hp to 90hp.

Call in and discuss your tractor needs with Tony Housden or call 67655 244



New Holland Hay Making Equipment

Early Order LOCK IN Finance discounts are being offered NOW!

How about a New - New Holland baler, mower conditioner, rake or windrower

How good would 2.95% over 42 months, 30% deposit be?

Order before 31st March 2013 and get CNH Capital finance approved within 30 days of order to qualify and know what your finance will cost.

Just 3 weeks to lock in 2.95% p.a. on your new hay gear

Order up until 31st March 2013

Finance Term and Rate

42 Month Term – Minimum 30% Deposit – 2.95% p.a.
54 Month Term – Min. 30% Deposit – 3.95% p.a.

Annual Payments commencing month 6 after commencement of finance.
Subject to Terms, Conditions and Approval.



SPARE PARTS

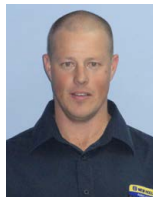
TAMWORTH - 6765 5244



David Hartmann



Peter Mackay



Colin Daye

GUNNEDAH - 6742 5777

ARMIDALE - 6772 8124



Mark Kenny



Ken Mack





Keith McPhie



**Great
Western
Tillage**

SCARIFIER AND TILLAGE POINTS

	Part No	Size/Desc	Inc GST
SCARIFIER POINTS 	SC20006	6"	\$8.00
	SC20007	7"	\$8.72
	SC20008	8"	\$9.57
	SC20009	9"	\$12.83
	SC20010	10"	\$14.34
	SC41006	6"	\$8.00
	SC41007	7"	\$8.72
	SC41008	8"	\$9.57
	SC41009	9"	\$12.83
	SC41010	10"	\$14.34
CHISEL POINTS 	RC21610-16	Reversible	\$29.96
	RC21610-22	Reversible	\$35.35
	RC00350-16	Reversible	\$31.43
	RC00350-22	Reversible	\$35.48

TOY OF THE MONTH



NEW HOLLAND **PINK** TC33DA - Scale 1:16

Part No: JLE558DS \$63.30 inc GST



We are also the authorised dealers for:



WHAT'S **NEW!!**

New Selecta **Smoothflo** Spotpak and Rakpak Sprayers for mobile on-the-go spray needs. Silvan has released their range of Selecta Spotpak 12 Volt sprayers with the Selecta **Smoothflo** pulsation free pumps in 50, 70, 100 & 200L capacities. These units are ideal for on-demand maintenance and weed management spraying alongside road verges, fence lines for fire breaks, vine rows in orchards or plantations. With capacities between 50L to 200L available, the Smoothflo sprayers are ideal for mounting on a vehicle tray or on a choice of motorised vehicles including ATVs. The Smoothflo Spotpak and Rakpak range has UV stabilised and impact resistant Polytuff tanks that ensure operator confidence. The product is designed for the harsh Australian sun. The tank mouldings also include indentations in the profile for tie down straps to secure the tank in place and the Rakpak has a baffled tank to minimise surge when travelling. There is a 135mm diameter filler lid with a breather and anti-spill feature with a suction foot filter.

Each unit comes fully equipped, ready for use with a 12 volt DC pump which achieves a flow rate of up to 7 litres per minute open flow, maximum pressure of 120psi with no pulsation.

Standard equipment includes a 3 metre length of battery cable with



alligator clips for attachment to the battery of the mobile unit on which it is carried, 6 metres of quality 8mm chemical resistant delivery hose and a SpotJet spray gun fitted with a Teejet adjustable spray nozzle, that is ideal for close and distance spraying applications.

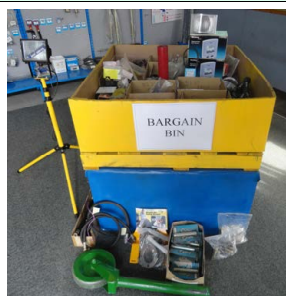
So call into Spare Parts to discuss your spraying needs and don't forget we stock a wide range of nozzle accessories for your sprayers.



BALER KNOTTER LIFTER
Suits Big and Small Square Balers

Price: \$33.00 inc GST

Recommended by our Hay Technician Merv Leard



**SPECIALS IN THE
TAMWORTH
"BARGAIN BIN"**

You never know what you might find!!

Tamworth & Gunnedah Branches are open Saturday mornings from 9am to 12pm (Closed Easter Saturday).

MONTHLY WINNERS

Congratulations to our New Holland Plush Toy Tractor Winners:

Terry Tongue - Tamworth, JC & LD Wise - Gunnedah, Aldersyde Partnership - Armidale



This month we have 3 NEW HOLLAND caps to give away -
simply return your payment by Monday 25th March, 2013 to go in the draw.
The Plush Toy Tractors are available from Spare Parts for \$11.00 including GST.

We would also remind customers that we accept Visa & MasterCard over the phone and Debit cards may be used at all our Branches.

All payments by these methods are included in the monthly draw.

Electronic/Internet Payments on the last day of the month cannot be allocated until the next day - it would assist us greatly if payments could be made prior to the last day of the month to allow receipting and allocation to accounts prior to Month end.....thank you.

For customers that use Internet Banking, our bank account details are:

Commonwealth Bank

BSB: 062 602

Account Number : 00 272 029

Please use your account number, name or invoice number as a reference.

Joke of the Month

Two little boys, ages 8 and 10, are excessively mischievous. They are always getting into trouble and their parents know if any mischief occurs in their town, the two boys are probably involved.

The boys' mother heard that a preacher in town had been successful in disciplining children, so she asked if he would speak with her boys.

The preacher agreed, but he asked to see them individually. The mother sent the 8 year old in the morning, with the older boy to see the preacher in the afternoon.

The preacher, a huge man with a deep booming voice, sat the younger boy down and asked him sternly.

"Do you know where God is, son?"

The boys mouth dropped open, but he made no response, sitting there wide-eyed with his mouth hanging open.

So the preacher repeated the question in an even sterner tone.

"Where is God?!"

Again, the boy made no attempt to answer.

The preacher raised his voice even more and shook his finger in the boy's face and bellowed, "WHERE IS GOD?!"

The boy screamed & bolted from the room, ran directly home & dove into the closet, slamming the door behind him.

"What happened?"

The younger brother, gasping from breath, replied,

"We are in BIG trouble this time!"

"GOD is missing, and they think WE did it!"



Moonbi/Kootingal Motor Show & Historical Machinery Exhibition

Saturday 9th & Sunday 10th March 2013

Gates Open at 9am at the Moonbi Showground

- ♦ Working Tractors
- ♦ Tractor Treks
- ♦ Tractor Pull
- ♦ Vintage Cars & Trucks
- ♦ Steam Engines



There will be something for the whole family with trade stalls, antiques and collectable stalls, craft demonstrations for the ladies, children's entertainment and full catering facilities at the venue.

Admission: Adults \$5, Seniors \$3, Kids Under 16 Free

For more info: www.kootingalmotorclub.com.au



Just to keep you up to date:

Looks like there is some interest in the Mulchers at Goodwin Kenny Tamworth....



.....Not the customer we were hoping for!



Looking for parts for your New Holland 317 Baler??

Some parts are now no longer available from New Holland. We have a Used New Holland 317 Baler which is now being dismantled for parts - call us if you need parts.

Wrecking NOW

Check out the March Special Prices on our used Equipment pages

We will be closed Easter Saturday, 30th March

.....Susan Goodwin