



A NEW HOLLAND TT75 FOR STAN SHORTER AT ATTUNGA

Stan (pictured at right driving his new tractor) was looking to replace his old Ford 4000 that has become a bit too unreliable after many years of operation. He has chosen a New Holland TT75 4WD with 75 Horsepower. The TT75 will be used to pull a small farming plant and slashing on the Shorter's Attunga farm, the extra horsepower and the advantage of 4WD will make the farming much easier than the 2WD Ford 4000. The TT75 is a basic "no frills" tractor with 8 forward and 2 reverse gears that has proven to be very reliable since it's introduction into the New Holland range. The 3 year/3000 hour warranty will also give Stan peace of mind.



NEW HOLLAND OUTFRONT MOWERS FOR ARMIDALE DUMARESQ COUNCIL & WALCHA COUNCIL

Goodwin Kenny and New Holland have been chosen as the preferred suppliers by Armidale Dumaresq Council and Walcha Council for their Outfront mower requirements to carry out their mowing maintenance on ovals, parks and gardens. Armidale Dumaresq Council currently has three New Holland MC28 Outfront mowers while Walcha has a single unit and both councils have chosen the New Holland G6035 to replace one machine each. The New Holland G6035 has a 3 cylinder diesel engine coupled to a 2 speed hydrostatic transmission driving through all four

wheels. Armidale Dumaresq Council have chosen the New Holland 1.8m (6') wide cutting deck for its superior grass cutting and finish of cut, while Walcha Council have chosen the Superior Equipment 1.8m (6') cutting deck for its robustness. Walcha's G6035 has been fitted with traction tyres to reduce slip while mowing the levy banks in town. Machine reliability, service and spare parts dependability are important aspects of Council's consideration of suppliers given the high demands on these mowers. Pictured above left is Goodwin Kenny's Salesman Tony Housden with the crew from Armidale Dumaresq Council and at right is Tony Housden with the crew from Walcha Council.



A NEW HOLLAND T6010 FOR GUNNEDAH SHIRE COUNCIL

Gunnedah Shire Council has recently taken delivery of a New Holland T6010 Plus Tractor. This machine will be used to maintain the main waterways and causeways within town limits and surrounding areas. The machine was fitted with front PTO and linkage so a front mower/mulcher can be used at the same time as a rear reach mower. Pictured is Gunnedah Shire Council Plant Superintendent Graeme Baxter on delivery of the new tractor. (Graeme was once employed by Goodwin Kenny many years ago- see photo below).

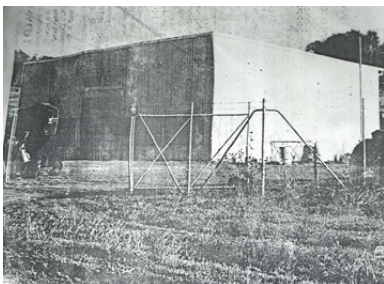


Need a run-around vehicle for the farm or a small utility tractor?

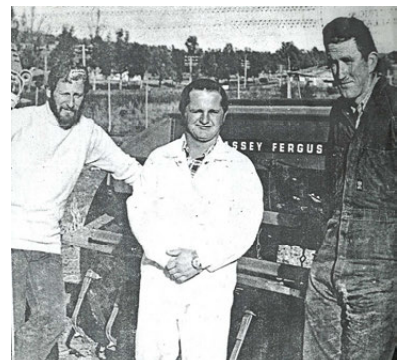
The New Holland Rustler Utility Vehicle and the Workmaster 45 horsepower tractor could be just what you are looking for... call our Sales Team - Tony Housden at Tamworth 67655244 and Glenn Furner at Gunnedah 67425777



More history.....the two photos are from a Newspaper article in 1974 when Goodwin Kenny moved their Gunnedah branch from Barber Street to the current Mullaley Road site.



The newspaper said: "The opening of Goodwin Kenny's new premises on Mullaley Road is another chapter in the success story of this progressive machinery company which first started operation in Gunnedah 11 years ago." "The staff is led by 37 year old Pat Kenny, who moved from Tamworth in 1963 and has since become a well known member of the Gunnedah community. Members of staff include Office Manager Graeme Gallanty, Workshop Foreman Graeme Baxter and Field Serviceman Ian Guest." (pictured at right)



MUNRO AUTODRIVER FOR MATHEW DUNBAR—WALCHA

Mathew was looking for an automated post driver to speed up his fencing in a safe and efficient manner, and suitable for use by himself. The Munro Autodriver he purchased is a machine that meets these criteria with a hydraulic hammer the same as the rock breaker on an excavator to drive the posts into the ground without the dangerous free fall hammer of other models. The autodigger function swings the auger into position, drills the hole and swings back out of the way with the pull of only one lever. The hydraulic side shift, hydraulic fore & aft and side tilt ensure accurate positioning of the post before and during driving without the annoyance of safety cages and guards, which are not required. The Munro Autodriver will drive concrete, timber and steel posts in many soil types. The Munro has a patented downforce system utilising the weight of the tractor through the linkage arms to ensure rapid driving of each post. The machine is available in various configurations to suit each farmers needs.



DALVAN OLIVES CHOOSE A HOWARD NUGGET SLASHER

Tony van Dorst of Dalvan Olives, Oxley Highway, Gunnedah is pictured at the installation of his new Howard Nugget 6' TPL slasher. Tony liked the clean top design [easy to clean and prevents deterioration] as well as the ability to be offset to reach further under the trees when slashing under the olive trees.

We have 5' and 6' Howard Slashers in stock—so call in and inspect these slashers and talk to Tony Housden at Tamworth and Glenn Furner at Gunnedah.



Tony Housden



Glenn Furner

SILVAN 800 LITRE PASTURE PAK

6 metre Field Boom,
Hose Reel and Gun.



SPECIAL PRICE, ONE ONLY
\$5,500.00 Inc GST



NEW CHALLENGE BUCKETS

Challenge 1860mm Heavy Duty Bucket 21/31 series (T4880)
at Tamworth\$2,200.00 Inc GST

Challenge 1860mm Bucket 21/31 Series (T5198)
at Tamworth.....\$2,145.00 inc GST

Challenge 2160mm 4 in 1 Bucket CLX Series (T5255)
at Tamworth\$5,599.00 inc GST

Challenge 2160mm Bucket 21/31 Series
at Gunnedah\$2,530.00 inc GST



AGPOINT FOLLOWING HARROWS

Part No
HA3X3FH..... \$146.47
HA4X3FH.....\$199.03
HA3X5FH.....\$236.21
HA4X5FH.....\$308.41



MURRAY 8020
STUMP JUMP HARROW
4Wide x 5Deep..... \$451.00



JARRETT SLASHERS

These slashers are ideal for medium to heavy duty slashing. General construction of the Jarrett MDX Series slasher consists of:

- ◆ 10mm steel reinforcing gearbox plate (15mm total thickness for MDX gearbox mounting)
- ◆ Obstruction free top deck (no debris collection points)
- ◆ Adjustable skids
- ◆ MDX gearbox rated at 57kw (75hp)
- ◆ MDX two friction plate 200mm clutch
- ◆ MDX 2 spring steel Jarrett slasher blades (75x10mm, step and twist)



WE HAVE JARRETT MDX150 AND MDX180..... NOW IN STOCK!

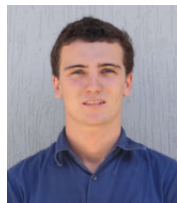
TAMWORTH - 6765 5244



David Hartmann



Peter Mackay



Cameron Young



Mark Kenny



Ken Mack



Jim Vincent



Keith McPhie

GUNNEDAH - 6742 5777

ARMIDALE 67728124



Hay/Silage Tines

All Tines are made of Spring Steel

Made in Germany by SHW



	PART NO	SIZE	INC GST
HAY SPIKES			
CONUS I	CH003005003	810mm	\$ 81.40
CONUS I	CH003005004	1100mm	\$ 92.40
CONUS II	CH003005005	980mm	\$155.10
CONUS II	CH003005014	1100mm	\$163.90
CONUS II	CH003005006	1250mm	\$168.30
SLEEVE			
Suit CONUS I	CH003005001	120mm	\$ 28.60
Suit CONUS II	CH003005002	120mm	\$ 34.10

TIP - Ensure you fit the spikes the right way up for longest life and remember to tighten them after each use or everyday until they do not tighten anymore.

Available for Conus I and II fittings.

We are the authorised dealers for: **DAVIMAC**

See us for all your Points & Tips for this coming season.
Now available—John Shearer Reverse Chisel Points.



TOY OF THE MONTH



8670 & T8050
Tractor Set
1:64 Scale

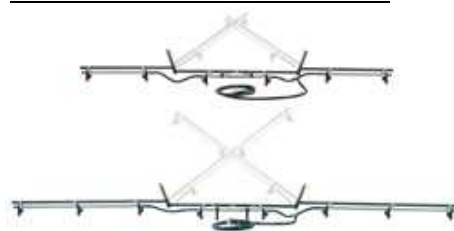
\$24.00 inc GST

Code: ERT13754DS



SILVAN HAVE A SELECTION OF SPRAYING EQUIPMENT TO SUIT ANY SPRAYING APPLICATION.

4 METRE CROSS FOLD BOOMS



SILVAN BOOMS, CROSS FOLD BOOM SPRAYERS, PUMPS, GUNS AND SPARE PARTS .

COMET 60/20 DIAPHRAGM PUMPS

Part No. CBP06020

- ◆ Twin piston positive displacement diaphragm pump
 - ◆ 58 L/min open flow
 - ◆ Max pressure (20 bar) 290 psi @ 540 rpm
- \$899.00 inc GST



SHURFLO 12 VOLT AG PUMPS

Part No. 361-8000

- ◆ 6.8 l/min open flow
 - ◆ 413/60 kpa/psi max pressure.
- \$320.00 inc GST



Part No. 361-2088

- ◆ 11.3 L/min open flow
 - ◆ 310/45 Kpa/psi max pressure
 - ◆ 1/2" BSP male ports
- \$390.01 inc GST



TRIAM 44 SPRAY GUN

With a sturdy stainless steel/brass barrel, these Triam spray guns are ideal for most spraying applications. A polypropylene handgun construction helps reduce fatigue. Trigger controlled spray pattern, adjustable from a wide cone to a straight stream, includes hose swivel, cone and fan nozzle as standard.



Code: 410-49
\$173.00 inc GST

PA SPRAY GUN

Comfortable on/off trigger grip action. Stainless steel lance supplied complete with jets and hose fittings. Has a fibreglass reinforced body.



Code:410-34
\$136.00 inc GST

FLASH SPRAY GUN

Ideal for almost any spray applications. Features ceramic 2.5mm nozzle as standard with kit of spare nozzles built into gun, adjustable spray pattern from straight stream to conical mist, safety adjustment lever pin and 1/2" BSP hose swivel as standard.



Code:411-21
\$140.00 inc GST

TURBO 400 SPRAY GUN

Constructed from high chemical resistant plastic with stainless steel and brass components. Features include spring loaded adjustable spray lever with variable spray control from misting to spot spraying and trigger locking device.



Code:411-22
\$156.00 inc GST



Don't forget that our Tamworth & Gunnedah stores are open Saturday mornings from 8am to 12pm. Except Saturday 7th April 2012 (EASTER).



MONTHLY WINNERS

Congratulations to our New Holland Cap Winners:

RM & PL Wright - Walcha, BH Whillock - Gunnedah, BC Canham - Bugaldie

This month we have 3 NEW HOLLAND Caps to give away - simply return your payment by Monday 26th March 2012, to go in the draw.

We would also remind customers that we accept Visa & MasterCard over the phone and Debit cards may be used at all our Branches.

All payments by these methods are included in the monthly draw.

Electronic/Internet Payments on the last day of the month cannot be allocated until the next day - it would assist us greatly if payments could be made prior to the last day of the month to allow receipting and allocation to accounts prior to Month End.....thank you.



For customers that use Internet Banking, our bank account details are:

Commonwealth Bank

BSB: 062 602

Account Number : 00 272 029

Please use your account number, name or invoice number as a reference.

JOKE OF THE MONTH

A little boy wanted \$100.00 very badly and prayed for weeks, but nothing happened. Then he decided to write God a letter requesting the \$100.00.

When the postal authorities received the letter addressed to God, Australia they decided to send it to Julia Gillard.

Gillard was so amused that she instructed her secretary to send the little boy a \$5.00 bill. She thought this would appear to be a lot of money to a little boy.

The little boy was delighted with the \$5.00 bill and sat down to write a thank-you note to God, which read:

Dear God: Thank you very much for sending the money. However, I noticed that for some reason you sent it through Canberra and those mongrels took \$95.00 in taxes.

FLEET VEHICLES FOR SALE



**FORD XF 1985 UTILITY
S-PACK, MANUAL**



**HOLDEN VR COMMODORE
1994 MANUAL, AIR COND**

CALL PETER KENNY AT GUNNEDAH 67425777

DAVIMAC

The Davimac SD Drills heavy duty construction, high quality drive system and a powder coated finish for a superior, long lasting protection ensures a quality built product for the farmer who only wants the best.

Optional disc coulters have a large 400mm (16") disc. Teflon lined pivot bushes eliminates greasing. Extra large hub bearing with quad lip seals and separately sprung disc coulters.

Accurate metering system and precise depth control.

Heavy Duty flotation tyres (not light car tyres or 4 wheel drive tyres commonly seen).

Optional Small Seed Box can be fitted for under-sowing or sowing at rates below 4kg per ha.

Excellent tine layout for the best possible trash flow.

Quality in cab mounted acre meter as standard.



JUST TO KEEP YOU UP TO DATE:

- Prices are going up all the time! We try to maintain a fair and reasonable charge for our Service Technicians and have not altered our rates since October 2009. After maintaining this rate of \$90.00/hour for over 2 years, we have now increased our **Labour Rate** to \$95.00/hour from 1st March 2012.

- **Easter** is just a few weeks away - we will be closed for the four day break from Friday 6th April to Monday 9th April (including Saturday 7th April). So if you need parts see us before the break or we will be back on Tuesday 10th April.

We hope you have a safe and happy Easter break also.

- Last week I spent a few hours with a journalist (Alan Mitchell) from Sydney talking about Goodwin Kenny. Alan has been engaged by New Holland to do some stories about their dealers and we chatted about the history of Goodwin Kenny to the present day, the whole exercise was quite cathartic for me and reinforced how important it is to get our Company history in a written form. My daughter, Gina, has already commenced collating the history from old photos and Newspaper articles and we are learning a lot about the company. After the passing of Aub, Joyce, Pat and Peter we have a void for some of those memories and are still looking for any photos or stories from our customers, suppliers and fellow dealers to include in our written history... please email any stories or photos to sgoodwin@goodwinkenny.com.au or call in at the Tamworth office and have a chat.



Susan Goodwin....