



A New Holland T5050 with 97Hp was the tractor chosen by Andrea and Brett Warden of Bowling Alley Point near Nundle for their first tractor and it will be used for carrying out all the general chores around the farm. As Brett and Andrea are busy with their Chiropractic Practice during the week the tractor had to be reliable and comfortable when they needed to get all the work done at weekends.

The New Holland T5050 has a wet clutch mechanical transmission with a 2 speed Powershift, full electro hydraulic shuttle forward/reverse and was fitted with a Challenge Front End Loader with 4in1 bucket and pallet forks. Andrea had researched Used and New tractors extensively over a couple of months looking at functionality and reliability, and some experience operating a tractor "over the fence" on another family farm gave her the knowledge and surety that the New Holland T5050 would be suitable for the work at hand. The New Holland T5050 is a comfortable and quiet tractor with Air Suspension seat, good access and is very easy to operate. The new tractor has the bonus of 3 year/3,000 hour New Holland warranty for peace of mind.



Pictured: Goodwin Kenny Salesman Tony Housden with Andrea and Brett Warden



Bill and Cameron Wilson (Retaru Pty Ltd) have taken delivery of their next mower conditioner. A new New Holland H7450 mower conditioner will replace their 6 year old New Holland 1431 Mower Conditioner.

There are not a lot of differences between the two machines, but keeping their hay and farming plant up to date is important to keep pace with the fast moving Hay and Forage operation that they run across three farms between Scott's Road and Attunga.

Call into Tamworth to view the traded New Holland 1431 that Merv Leard (Goodwin Kenny Hay Technician) has checked over in our workshop. Pictured: Cameron Wilson with Oscar at delivery

John Loi and his son, Frank, came into our Tamworth branch looking for a small tractor to replace the Ford 5000 that has been the main farming tractor for many years. With smaller areas to look after now John needed a suitably sized tractor with Front End Loader and Mid Mount Mower Deck to clean up around the house and sheds, tidy up the Olive orchard and do it all easier without the damage caused by a bigger tractor. The New Holland Boomer 1025 was chosen for its ease of use, manoeuvrability, build quality and the value for money.

John's New Holland Boomer 1025 has a 26hp diesel engine coupled to a 2 pedal hydrostatic transmission, joystick controlled Challenge Front End Loader with 4in1 bucket, 4wd and the New Holland commercial quality 1.5m wide Mid Mounted Mower Deck.

Pictured at start up is Tony Housden (Goodwin Kenny Sales) John Loi, and sons Rick and Frank Loi.



If you missed AGQUIP—call in to Tamworth and Gunnedah branches and see the range of machinery on display

New Holland Tractors.....2 Specials

Balers and Mower Conditioners

Challenge Blade

Davimac Seeder

Howard Slashers and Mulchers

Jarrett Slashers

McHale Wrappers

Silvan Agrex Spreader

Silvan Pasturepaks and Spreaders

Sip Hay Rakes

Taarup Hay Rakes



NEW HOLLAND T1510, 31HP,
Hydro Transmission, AG Tyres,
CHALLENGE 4in1 Loader..\$22,550.00



NEW HOLLAND TD95D, 98HP,
20F/20R, Synchro F/R Shuttle,
2 Sets Hyd Remotes... \$52,305.00

Full Warranty
Incredible Prices
2 units only

SPRING MAINTENANCE

We all talk about doing the maintenance, but often get busy and say to ourselves “Oh, it was working fine last year, she’ll be right” It is at this point that “Murphy’s Law” appears and the wheels all start to fall off.

Slashers – Post Hole Diggers – Flail Mulchers – Spray Booms

- 1) Change the oil in the gearbox
(Always Refer to your operator’s manual for recommended hourly intervals for each lubrication interval – but the guide below is a good rough indication)
Occasional Use (2-3 weeks per Year) – Change the oil once per year
Average use (4-8 weeks per Year) – Change the oil 2-3 times per year
Heavy use/Contractor – Change the oil every month, maybe more often.

How to Change the oil?

Most of the above machines will require a simple suction pump if there is no drain plug in the gearbox. Suck out the old oil as much as you can, looking carefully for any signs of metal in the oil. Refill with the manufacturers recommended oil to the correct level.

If you are not sure of any aspect of this maintenance, type of oil? metal in the oil? etc., please call either of our workshops and discuss your query with one of our trained technicians.

Alternatively our technicians can come out to your farm and carry out this maintenance, or bring the implement into our workshops to save yourself the travel costs.

- 2) Frame and body - Inspect for cracks and damage, check all nuts and bolts are tight
- 3) Blades, blade beam or rotor - Check carefully for damage, cracks, bends, are the blades sharp enough?
Remember if you are replacing blades you MUST replace the bolts nuts and bushes every time.
A slasher blade that comes off can travel 1-200 metres and cause serious damage or death.
- 4) PTO Shaft - Inspect, grease and ensure the safety covers are not damaged and spin freely of the shaft.
- 5) Safety Clutch – This is critical – before the first use for the season – dismantle the clutch, clean any rust off the faces with emery cloth, inspect and replace the friction plates if need be, reassemble without oil, the initial spring setting for most standard clutches on implements is to tighten the nuts till the springs are tight and then back the nuts off 2 complete turns, be accurate and ensure all the nuts are set the same. From this point you will need to adjust the clutch to suit the conditions you are operating in. Refer to your operator’s manual or our technicians for details specific to your implement.

By carrying out this basic maintenance before the season, you are likely to get all of your work done on time, without breakdowns and costly repairs and downtime.

Macnaught
Suction
Pump



Safety Clutch

taarup

We are pleased to advise that Goodwin Kenny has been appointed as a dealer for TAARUP and we will be able to provide Parts, Service and new Taarup products for the Tamworth and Gunnedah areas.

Taarup Rotary Hay Rakes are high quality and reliable with flexible raking options from 3.2m Single Rotary to 7.8m Twin Side and Centre Delivery Rakes.

For high performance and flexibility Taarup Rakes will get your hay raked efficiently.



Call Tony Housden at Tamworth on 6765 5244 or Peter Kenny or Glenn Furner at Gunnedah on 6742 5777

NEW HOLLAND IRRIGATION ENGINE



**IVECO
8.7 LITRE
MOTOR
383 HP @ 2100
RPM**



CALL MARK KENNY AT GUNNEDAH ON 67425777

SPARE PARTS

TAMWORTH -
6765 5244



David Hartmann



Peter Mackay



Mark Kenny



Ken Mack



Keith McPhie

GUNNEDAH - 6742 5777

ARMIDALE - 6772 8124



16 LITRE 12V RECHARGEABLE WEEDPAK KNAPSACK



- UV stabilised polytuff tank
- 2 stage filtration under the lid and on the suction hose in the tank
- Rechargeable 12 volt battery and charger
- Heavily padded adjustable shoulder straps
- Maximum open flow 2.6L/min
- Pressure rating 40 psi
- Viton valves
- Santoprene diaphragm
- Intermittent duty cycle
- Run time approximately 4 hours

2 SPEED PUMP

Part No: WP16-1 \$195.00 inc GST

CHAPIN PRO SERIES HAND SPRAYERS

- Suitable for insecticides, fertilisers, herbicides and cleaning products
- Equipped with Viton seals and gaskets
- Corrosion resistant spray lance
- Supplied with three different nozzles: adjustable brass, adjustable plastic and flat fan plastic
- Surespray anti-clog filter in tank



Two sizes:

7.6 Litre - Part No: CP-26021 \$94.00 inc GST

11.4 Litre - Part No: CP-26031 \$109.00 inc GST

Spring has Sprung - Time To Get Your Sprayers Out

Efficient filtration is an important component of every sprayer. Effective filtration will prevent blocked nozzles, reduce or inhibit pump wear and help reduce down time and expense due to repairs. Check your nozzles as they are prone to wear.

Nozzles which are worn will affect the success of your spray pattern. Selecta offers a choice of foot, suction, pressure line, nozzles and high volume irrigation filters to suit most applications.



GET YOUR BALING SORTED

NEW HOLLAND ROUND
BALER BELTS
ALWAYS STOCKED.

BELTS FOR OTHER BALER
BRANDS AVAILABLE.

SPECIALTY BELTS MADE
TO ORDER.



WE STOCK
TWINE
FOR SMALL &
BIG SQUARE
BALERS
AND
BLACK FASTNET



ROUND BALER ROLLER CHAIN

Renold Standard Duty

10' RC60 Chain
with Joiner

Part No: 73322244

\$61.84 inc GST



Book your BALER OR COMBINE HARVESTER

SERVICE NOW

Call Merv Leard
at Tamworth on
6765 5244
Or David Pease
at Gunnedah on
6742 5777



TOY OF THE MONTH



New Holland 8670 & T8050 Tractors

Past & Present - Scale: 1:64

Part No: ERT13754DS - \$23.10 inc GST

Don't forget to call into the Parts Department for your
Howard, Jarrett, Superior and Southern Cross Slasher Blades.



Tamworth & Gunnedah Branches are open Saturday mornings from 9am to 12pm.

MONTHLY WINNERS

Congratulations to our New Holland Plush Toy Winners:

MK & CM Douglas-Woolomin, GJ & AP Stones-Gunnedah, G Mitchell-Tamworth

This month we have 3 NEW HOLLAND Plush Toys to give away - simply return your payment by Thursday 26th September, 2013 to go into the draw.

We would also remind customers that we accept Visa & MasterCard over the phone and Debit cards may be used at all our Branches.

All payments by these methods are included in the monthly draw.

Electronic/Internet Payments on the last day of the month cannot be allocated until the next day - it would assist us greatly if payments could be made prior to the last day of the month to allow receipting and allocation to accounts prior to Month end.....thank you.



For customers that use Internet Banking, our bank account details are:

Commonwealth Bank

BSB: 062 602

Account Number : 00 272 029

Please use your account number, name or invoice number as a reference.

JOKE OF THE MONTH

An aged farmer and his wife were leaning against the edge of their pig pen when the old woman wistfully recalled that next week would make their golden wedding anniversary.

"Let's have a party Chris" she suggested. "Let's kill the pig".

The farmer scratched his head.

"Gee Mary", He finally answered,

"I don't see why the pig should take blame for something that happened fifty years ago".

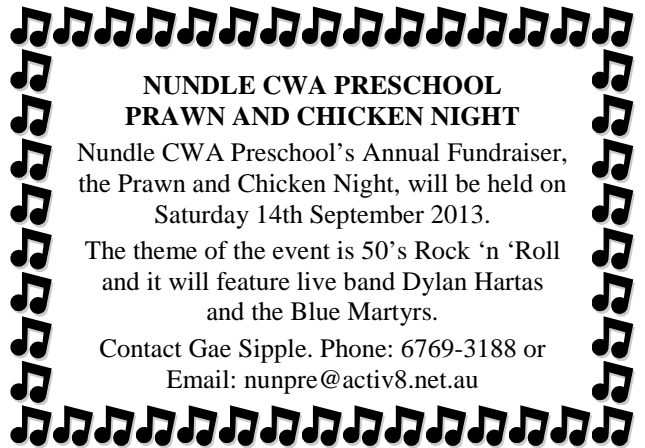


NUNDLE CWA PRESCHOOL PRAWN AND CHICKEN NIGHT

Nundle CWA Preschool's Annual Fundraiser, the Prawn and Chicken Night, will be held on Saturday 14th September 2013.

The theme of the event is 50's Rock 'n' Roll and it will feature live band Dylan Hartas and the Blue Martyrs.

Contact Gae Sipple. Phone: 6769-3188 or Email: nunpre@activ8.net.au



CommBank Agquip Rural Women's Morning Tea

Following the success of last year's Women Empowered Morning Tea the Commonwealth Bank hosted another event for women at Agquip on Wednesday 21st August. Guest speakers for this year were Isobel Knight - 2013 NSW & ACT RIRDC Rural Woman of the Year and Director of proAgtive (a business that specialises in Succession Planning for Farming Families), Liz Davenport - Fashion Designer and Rachael Bermingham - author of "4 Ingredients" and "Savvy".

All three speakers delighted the audience of over 100 ladies with tales of their journeys in their chosen careers.

Isobel spoke about the process of succession planning and the key role women play in farming families. Rachael delighted the ladies with her stories about her many and varied jobs (from hairdressing to shark feeding to Travel Agent) which led to her success as an Author and mentor to other women. Liz came prepared with a suitcase full of her beautiful designs which the ladies loved, especially as Liz described many of them as being necessities for "Cruising".

Sarah Bassett and the team from Commonwealth Bank did a fabulous job and I was pleased to be able to attend and enjoy the event with a few friends.

The Commonwealth Bank have a website for women: www.womeninfoocus.com.au

Congratulations to the Davidson family - Rob and Valli and their children Kate and James, on being named winners of the Brownhill Cup for 2013. The Brownhill Cup was awarded in recognition of farming in an economically and environmentally sustainable way. The 2013 Brownhill Cup was presented to the Davidsons by Geoff Wearne, Commonwealth Bank Executive General Manager of Regional and Agribusiness Banking and he commended the family on their ability to combine business and farming innovation. Pictured: David Brownhill, Kate, Valli, Rob and James Davidson with Geoff Wearne.



Isobel Knight

Rachael Bermingham

Liz Davenport



Yvonne Richards, Susan Goodwin and Jeanette Melville at the Morning Tea



**COUNTRY
CULTURE**
BEST AUSTRALIA 2012

COUNTRY CULTURE on Channel 7's Weekend SUNRISE

Did you see this story on Sunrise a few weeks ago?

It is great to see business enterprise in the bush, especially as it allows people to live and work in the country....

.....well done to Angela Lavender at Quirindi.

To look go to <http://au.tv.yahoo.com/sunrise/video/watch/18167841/high-end-art-from-the-outback/>

Check out the website for your Christmas shopping .. Country Culture website www.countryculture.com.au

.....Susan Goodwin