



KANSAS LIVESTOCK AT WINTON

After moving from Boggabri to Winton, just west of Tamworth, Rob and Pam Crosby needed to upgrade and add some equipment to their farming plant to utilise the Lucerne on their new farm.

They have "downsized" their mower conditioner, trading their New Holland 1431 Mower Conditioner on a new New Holland H7230 Mower Conditioner



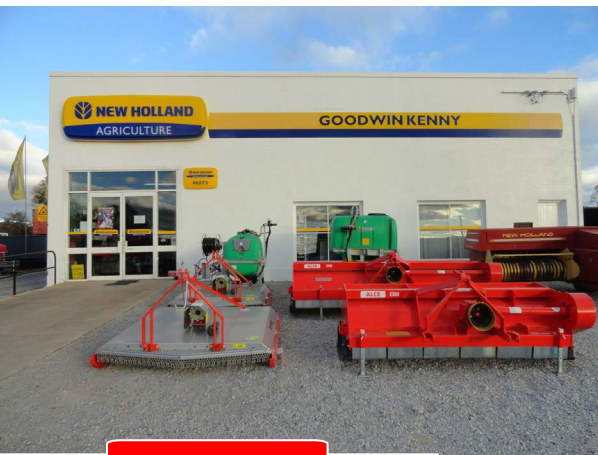
with a 3 metre cut to suit a Used New Holland 570 baler they have purchased as well. With a number of small horse paddocks to maintain, a set of 10' Dakenag "Dillon" Pasture Harrows was also purchased with a 3pl lifting frame to spread and partially incorporate the horse manure.



Rob Crosby is pictured above with the new New Holland H7230 Mower Conditioner & New Holland 570 Baler & at left with the pasture harrows

MALDON FARMING AT BOGGABRI

Craig Thomson, Maldon Farming at Boggabri, pictured at right with his new Tonutti Millenium V16 trailed "V" hay rake. Distributed and supported by Dakenag, the Tonutti range of finger wheel and rotary rakes is comprehensive and are generally fully equipped with features usually found as options on other brands such as rear wheel steer, hydraulic open/close and lift/lower, with splitter wheels being standard on some models. Craig has put his new Tonutti V16 to the test in some very heavy barley and triticale crops with excellent results, being able to pull three windrows from his New Holland 1431 mower conditioner into one when required.



SLASHERS AND MULCHERS

With a bit of rain around again a number of customers have mentioned that there is a little grass growth but also quite a bit of weed growth, while it is late to spray some weeds and thistles, slashing or mulching the weeds early may help to let pastures get away and reduce the impact of the weeds. We have a number of slashers and mulchers in stock ready to go.

Howard and Jarrett 5' to 7' slashers and also 6' and 10' Howard Flail Mulchers. Other sizes are available, but in the run to Christmas you will need to hurry to get any specific machine to suit your needs.

Call into Gunnedah Branch and talk to Peter or Glenn, at Armidale – have a chat with Keith or speak with Tony at Tamworth

Christmas SALE



New Holland BC5060

Small Square Baler.
In stock at Tamworth
Fitted with Light Kit and
Hydraulic swing kit.

No Trade

\$43,500.00 Inc GST



New Holland BR7060

Round Baler - Available at
Tamworth & Gunnedah.
4'x5' Net Wrap, Superfeed
with Rotor Reverser.

No Trade

\$49,300.00 Inc GST



New Holland T1510

4WD, 31HP, Hydro
Transmission, Ag Tyres,
Challenge 4 in 1 Front
End Loader, Canopy

No Trade

\$22,550.00 Inc GST



New Holland TD95D

98HP, 4 cyl Engine, 20 F x 12 R
Trans with Synchro F/R Shuttle,
2 sets Hydraulic Remotes.

Bare tractor **\$52,305.00 Inc GST**

Tractor & Challenge 4 in 1 FEL

& Bucket **\$68,200.00 Inc GST**

IN-STOCK NOW SALE

New Holland FM 1000 DGPS Display/Receiver

List Price \$9,372.00 Inc GST
SPECIAL \$8,600.00 Inc GST
 At Gunnedah Part No: ZTN93000-20-00



New Holland Guidance

- 2 years warranty (unlike our competitors at 12 months)
- Goodwin Kenny sells, installs & can maintain New Holland Guidance

Contact
 Glenn Furner or
 Mark Kenny at
 Gunnedah &
 at Tamworth
 Tony Housden or
 David Hartmann



New Holland Completion Kit for Intellisteer

Navigation Controller II & NH372 GPS Receiver, suits T7 (Sidewinder II Armrest), T8, T9, CX & CR models.



SPECIAL
\$9,900.00
 Inc GST

One only at
 Tamworth



New Holland Irrigation Engine Iveco 8.7 Litre Motor 383 HP @ 2100 RPM



SPECIAL
\$51,700.00
 Inc GST

Call
 Mark Kenny
 at
 Gunnedah

DAKEN Post Hole Diggers

A well built Post Hole Digger with Gal frame, at a very reasonable price, suits all 50 mm socket augers.

PHD with
 12" Auger -
 Price
\$2,420.00
 Inc GST
 Available at
 Tamworth,
 Gunnedah
 and Armidale
 branches



Silvan 400 litre Pasturepak Linkage Sprayer - with 6 metre folding boom, 20m hose reel & spot spray gun, 15 litre Handwash Tank.

\$5,060.00 Inc. GST
 600 litre and 800 litre Pasturepaks also in stock



Silvan 30 Litre Foam Marker 2 sided operation, manual change on marker for left to right hand side, On/Off switch only, in cab.

SPECIAL \$1,800.00 Inc GST
 Part No: 042FB



2 only at this price

Silvan Paddockmaster 30 Litre Foam Marker

Easy operation, adjustable foam quantity. In cab controller, operates left or right valve and On/Off from the Tractor Seat.



SPECIAL
\$2,300.00
 Inc GST

1 only at this price

Silvan SX Galvanised Spreader

Simple to use spreader, 338 litre capacity, 6 to 14 m width of throw, optional side throw conveyor and agitator, includes P.T.O shaft.



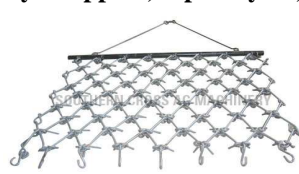
Silvan Special \$875.00

Offer ends the 31st December 2013.

Part No: SX-500 at all Branches



Southern Cross Ag Machinery - Rippers, Pipe Layers, Drag Harrows, Carryalls & Slashers



For more information about SXM drop in or call Keith at ARMIDALE on 6772 8124.

SPARE PARTS

TAMWORTH - 67655 244



David Hartmann



Peter Mackay



Shane Bridges



Mark Kenny



Ken Mack



Keith McPhie

GUNNEDAH - 6742 5777

ARMIDALE - 6772 8124

AGPOINT FOLLOWING HARROWS

Part No:

HA3x3FH.....\$153.79
HA4X3FH.....\$209.00
HA3X5FH.....\$248.02
HA4X5FH.....\$323.40



MURRAY 8020
STUMP JUMP HARROW
4 Wide x 5 Deep...\$537.90



We are Bare-Co stockists
Call in and see our range
of products.

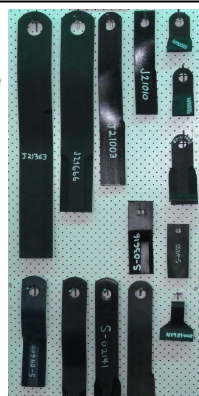


Talk to Spare Parts about
getting a new Bare-Co ROPS
and Canopy for your tractor.
Be Safe and Sun Safe!

SLASHER BLADES



We sell Southern Cross Mowers, Slashers
and Finishing Mowers and stock blades
for these machines.



HOWARD BLADE KITS

Kits include 2 Blades, 2 Bolts,
2 Bushes & 2 Nuts.



Suits Howard Nugget
Slashers.

NEW HOLLAND TOYS IN STOCK



Part No:	Description	\$ Inc GST
ERT35115DS	2.5" New Holland Mini Tractor	\$3.47
ERT35123DS	4.3" New Holland Small Tractor	\$8.09
NHPLUSHTOY	New Holland Plush Toy	\$11.00
ERT13778	1:64 7740 Tractor	\$12.54
ERT13811	1:64 BR7090 Baler	\$12.54
ERT13829	1:64 CR8090 Combine	\$24.09
ERT13754DS	1:64 8670 & T8040 Tractor Set Past & Present	\$24.50
ERT13723DS	1:64 T9060 HD Tractor & Scrapers	\$26.94
ERT13668DS	1:32 BB960A Big Square Baler	\$32.23
ERT13774	1:64 T8020 with Forage Harvester & Wagon	\$35.64
ERT13750DS	1:64 T8030 Tractor with J&M Gravity Wagons	\$36.67
ZFN12963	1:16 Hay Elevator	\$37.74
ZFN12948	1:16 Grain Auger	\$40.90
ERT42171	1:32 BB960 Big Square Baler	\$46.70
ERT13795	1:64 FR9090 Harvester & Wagon	\$47.19
ERT13753DS	1:64 TR88 & CR9040 Combine Set Past & Present	\$50.19
JLE558DS	1:16 TC33DA Pink Tractor	\$63.31
ERT13730DS	1:32 FR9090 Forage Harvester	\$71.61
ERT13793	1:16 T6060 Tractor with Loader	\$106.00
ERT13725DS	1:16 T9060 Tractor	\$215.99
ERT13751DS	1:64 Ford 5000 Tractor	\$15.70
ERT13749	1:32 Ford 7000 Tractor	\$28.88

If we don't have what you want
we will try and get it in for you.
Call in and browse through the
New Holland Toy Catalogue.



New Holland T7500
Tractor with Loader
\$318.33 Inc GST

Tamworth & Gunnedah Branches are open Saturday
mornings from 9am to 12pm.

MONTHLY WINNERS

Congratulations to our New Holland Plush Toy Winners:

GE & LE Burgess - Timbumburi, KR & LB Wise - Gunnedah, O'K Cattle Co - Walcha

This month we have 3 NEW HOLLAND **PINK** CAPS to give away - simply return your payment by Tuesday 24th December, 2013 to go into the draw.

We would also remind customers that we accept Visa & MasterCard over the phone and Debit cards may be used at all our Branches.

All payments by these methods are included in the monthly draw.

Electronic/Internet Payments on the last day of the month cannot be allocated until the next day - it would assist us greatly if payments could be made prior to the last day of the month to allow receipting and allocation to accounts prior to Month end.....thank you.



For customers that use Internet Banking, our bank account details are:

Commonwealth Bank

BSB: 062 602

Account Number : 00 272 029

Please use your account number, name or invoice number as a reference.

The wife was on my case for weeks to get the Christmas lights up...



They're up now, and for some reason she won't talk to me!

CHRISTMAS / NEW YEAR BUSINESS HOURS

Monday	23rd December 2013	8am to 5pm
Tuesday - Christmas Eve	24th December 2013	8am to 5pm
Wednesday - Christmas Day	25th December 2013	CLOSED
Thursday - Boxing Day	26th December 2013	CLOSED
Friday	27th December 2013	CLOSED
Saturday	28th December 2013	CLOSED
Sunday	29th December 2013	CLOSED
Monday	30th December 2013	8am to 5pm
Tuesday - New Years Eve	31st December 2013	8am to 5pm
Wednesday - New Years Day	1st January 2014	CLOSED
Thursday	2nd January 2014	8am to 5pm

Just to keep you up to date:



It is great to see your staff happy at work....during the last two months we have had a Fiat AD7 in for service work and Con Smit has had a "smile from ear to ear". After working in the Dutch Navy, on the Railway at Werris Creek, for Waugh & Josephson at Petersham, at the Snowy Mountains and then Mount Newman in Western Australia Con came to work at Goodwin Kenny in 1984 and has been employed here ever since. Over the years

Con has worked on countless Fiat tractors and crawlers, becoming expert in these models. In my early days with Goodwin Kenny (in the 80's) we would regularly service crawlers and Con would often travel to properties to do this work, establishing long-term relationships with our customers. After 29 years with us Con now works three days a week and was in "his element" with this machine owned by the Durham family at Mullaley.



I thought I would share with you some more of Kate Rutter's "Sheepish" artwork. Kate's wonderful and witty sense of humour combined with her knowledge of rural living are the ingredients for some great drawings and they always make me smile. (Kate tells me the tractor is Red because it is Christmas - otherwise I think all tractors should be Blue!)

It is important to keep your sense of humour - especially in this industry and especially when times get tough.

A reminder about our Christmas Trading Hours is above - **we will be closed on Friday 27th and Saturday 28th December.**

We would like to thank you, our customers, for your continued support of Goodwin Kenny and we look forward to continuing to provide you with great customer service next year. **Merry Christmas and Happy New Year.**

....Susan Goodwin



MERRY CHRISTMAS