



When John & Sam Stokes bought their farm at Duri a few years ago it came with a great collection of miscellaneous old equipment including a Ford 5000, 6600 and 7000 tractors, none of which had a front end loader.

While the old Ford tractors have been useful to some extent, John really needed to reduce the three tractors to one tractor and have an efficient machine to carry out all his tasks properly. John and Sam have recently taken delivery of a new New Holland T5050 4wd Cab tractor fitted with a Challenge AP35 Plus loader with 4 in 1 bucket. The New Holland T5050 has 97 Engine Horsepower, Electro Hydraulic Forward Reverse (ideal for loader use), Electronic PTO and 2 speed Powershift giving 24 Forward and 24 Reverse gears.

Initially the tractor will be used for cleaning up around the new house and sheds before general farm use pulling a Direct Drill, Nobili Mulcher and doing some road maintenance. The first use of the 4 in 1 was during the start-up training when a bucket of gravel was dropped into a hole in the road from house to the shed. Pictured right at delivery and start-up is Levi Alley (Goodwin Kenny Technician) and John Stokes.



### LATEST RELEASE—NEW HOLLAND ROUND BALER (RB)

After 40 years of Round Baler development you would think there is little left for New Holland to improve, but with the release of the new New Holland Roll-Belt Round Baler they have added new features and made baling easier for the operator.



#### So what is new and better you ask:

- \* 2 models – RB150 (5' bale dia) RB180 (6' bale dia) Superfeed or Crop Cutter
- \* Up to 20% increased capacity                      \* 5% increase in density achieved
- \* Improved pick up with enhanced cross feed augers, more durable pick up tines, reel and guards.
- \* *New Drop floor* – no crop wastage as the rotor blockage is contained and fed into the chamber after hydraulically dropping the floor from the cab.
- \* Now with 4 wider, stiffer belts that track better and reduce crop accumulation especially in short crops.
- \* Belts are a new design “endless belt” with sealed edges to reduce fraying and the new surface provides improved cleaning.
- \* Modified roller positioning and new Sledge roller wear plates.
- \* Upgraded and updated net wrap system increases reliability of wrap application.
- \* The net tube now swings out and down for easier net loading from the ground (especially for those of us who are a bit shorter).
- \* Improved accessibility and serviceability reduces maintenance downtime.

All this adds up to a round baler to improve your productivity, reduce your downtime and produce a premium round bale that you and your customers can be rightly proud of. **And it looks good too!!**



- Round Baler Premium Protection Plan coverage as standard
- 24 months / Unlimited bale count cover – Free of charge
- Optional Extended Service Plus Protection Plan (OPP) available



As with most new models there may be huge demand and supply shortages, so get in early and place your order to secure your new baler & bring your round baling plant up to the latest technology.

Call Tony Housden at Tamworth and Peter Kenny or Glenn Furner at Gunnedah.

### NEW – In Stock New Holland T5.95 Electro-Command



*The ultimate general farm/loader tractor*



- ✓ 99Hp engine - common rail diesel engine
- ✓ Very responsive & fuel efficient
- ✓ 16 Forward x 16 Reverse Push Button Semi power-shift transmission
- ✓ Electro Hydraulic F-R Shuttle
- ✓ 83l/min Hyd. Flow – Main pump
- ✓ Linkage lift Capacity = 4,500kg Max
- ✓ Weight 4,150kg approx. Bare tractor.
- ✓ Roof window for loader visibility at height.

**Call in today for a test drive**

CNH Industrial Capital Australia Pty Limited have attractive Finance rates available to approved purchasers subject to terms and conditions.



From 31st March CNH Australia Pty Limited has changed its name to CNH Industrial Australia Pty Limited.

This modification is in line with global changes to legal entities & incorporates brands like New Holland, Fiat & Iveco



## Boom Spray maintenance

Before you start working on your boom – Wash it down to remove any old chemical residue and/or wear gloves while working around the boom or tank. (Tip – the Green Nitrile Disposable Surgical style gloves are ideal, Touch N Tuff is one brand)

\* Check the frame and mounting bolts of your boom and tank – especially the linkage and pump mounting bolts.

\* Inspect your PTO shaft and cover – disassemble the cover and shaft – clean the sliding section and re-grease it, check the Universal joints for movement or wear and grease, ensure that the cover is fitted correctly, turns freely on the shaft and is not damaged in any way.

\* Change the oil in your pump following the instructions in your Operator's manual.

Take note that if the oil is milky – there is an internal leak in one of the seals or the diaphragm, if the oil is black then there is wear in the aluminium housing of the pump – both situations will require repair or replacement of the pump – bring it in to any of our Spare Parts or Service departments for assessment and repair.

\* Check the condition of hoses on the sprayer – look for damage, kinked or pinched sections, deterioration or loose fittings – all these can lead to downtime, loss of chemical and frustration.

\* Remove and clean all filters

\* Remove, inspect and clean all nozzles, (Tip – an old toothbrush is ideal) rinse them and refit after cleaning the nozzle filters.

\* Nozzles DO NOT last forever – they wear and put out an uneven pattern – 2-3 years is about the maximum time you will get from a low use sprayer – nozzles can also be worn out and need replacement after just a couple of weeks use, depending on the chemical you are using. Check the spray pattern and output – replace as a set if needed.

\* If you have non drip nozzle bodies you should also remove the cap and inspect the diaphragm, clean before reassembling and check that they do not drip when the spray is turned off.

PLEASE take the time to run your sprayer with clean water, just to make sure everything is correct BEFORE you put chemical into the tank. There is nothing more annoying than having a “brew” mixed ready to go and you have to repair something while working in gloves.

**After Spraying** - One more thing to remember – always wash the outside of your sprayer when you are finished – the dry dust and spray drift makes a corrosive mix and any animals or people who walk through the shed and touch the boom will come in contact with spray residue, leading to potential poisoning or chemical contamination.



### SLASHER STOCK SPECIALS

Howard 5' Nuggett \$3,190.00 inc GST

Howard 6' Nuggett \$3,795.00 inc GST

Howard 7' HD210 \$9,900.00 inc GST

Jarrett 5' MDX \$3,520.00 inc GST

Jarrett 6' MDX \$4,070.00 inc GST

**PRICES ON STOCK UNITS ONLY**



Call  
Tony Housden at Tamworth  
6765 5244 and  
Peter Kenny or Glenn Furner  
at Gunnedah 6742 5777



### **AGPOINT FOLLOWING HARROWS**

Part No:

HA3x3FH...\$161.62

HA4X3FH...\$219.53

HA3X5FH...\$261.02

HA4X5FH...\$340.53

### **MURRAY 8020 STUMP JUMP HARROW**

4 Wide x  
5 Deep  
\$537.90



### **NEW HOLLAND IRRIGATION ENGINE**

Iveco 8.7 Litre Motor  
383 HP @ 2100 RPM



**SPECIAL  
\$51,700.00  
Inc GST**

Call  
Mark Kenny  
at  
Gunnedah



### **PASTUREPAKS**



400 Litre \$5,555.00  
600 Litre \$5,720.00  
800 Litre \$7,260.00



**Southern Cross Ag Machinery - Rippers, Pipe Layers, Drag Harrows, Carryalls & Slashers**



**For more information about SXM drop in or call Keith at ARMIDALE on 6772 8124.**

# GOODWIN KENNY

Tractor and Farm Machinery Dealers since 1962

**For all your Spare Parts and great service from our experienced team**



**David Hartmann**  
Tamworth

Nearly 6 years with Goodwin Kenny. Over 35 years in Ag industry. Experienced with New Holland, Case, Ford, John Shearer & Silvan



**Peter Mackay**  
Tamworth

Over 6 years with Goodwin Kenny. Many years with Council & Private Business. Experienced with New Holland, Fiat, Ford, John Shearer & Silvan



**Shane Bridges**  
Tamworth

New to the Goodwin Kenny team. Over 20 years in Ag Industry. Experienced with Case, John Shearer, Gyril, Silvan, Points & discs



**Mark Kenny**  
Gunnedah

Over 33 years with Goodwin Kenny. Experienced with New Holland, Versatile, Fiat, Simplicity, Gyril, Connor Shea/John Shearer



**Ken Mack**  
Gunnedah

Over 13 years with Goodwin Kenny. Experienced with New Holland, Gyril, John Shearer, Howard, Morris, Silvan and Simplicity



**Keith McPhie**  
Armidale

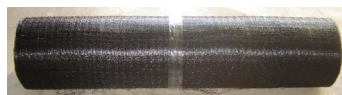
Nearly 12 years with Goodwin Kenny. At Armidale - a wide range of parts including Filters, Oils & Twine, Slasher Blades, Points & Bolts/nuts, BareCo, Silvan & Southern Cross

AGPOINT \* BARECO \* CHALLENGE \* DAVEY AFM  
\* DAVIMAC \* GREAT WESTERN TILLAGE \* GYRAL  
\* HOWARD \* JANKE \* JARRETT \* JAYLOR \* McHALE  
\* MURRAY HARROWS \* MORRIS \* NEW HOLLAND  
\* SILVAN \* JOHN SHEARER \* SIMPLICITY  
\* SIP \* SXM \* SUPERIOR \* TAARUP

246 Bridge St. TAMWORTH  
(02) 6765 5244  
42 Mullaley Rd. GUNNEDAH  
(02) 6742 5777  
139 Miller St.  
ARMIDALE  
(02) 6772 8124  
[www.goodwinkenny.com.au](http://www.goodwinkenny.com.au)



## New Holland Twine & Net



	Part No	Details	Size	Inc GST
<b>LARGE</b>	87463634	Big Square Twine	2 x 1100m	\$96.64
<b>SMALL</b>	87463635	Small Square Twine	2 x 2000m	\$81.53
<b>BLACK</b>	73340502	Net	1.2 x 1500m	\$273.24
<b>INFINET</b>	73322131	Net	1.23 x 3600m	\$419.30



Black Net



### Pasture Seeders Baker Boots



- Bolt on Baker Boot with 40mm wing/boot.
  - Angled Tungsten tile fitted to leading edge for better trash flow & hard facing applied to other key wear areas.
  - Suits most common Baker Boot Drills with 2 x 3/8" bolt holes @ 60 or 63mm centre.
- Part No: BB989881 \$51.70 each Inc GST

### Bolt-On Super Sower (BOSS)



- Single 7/16 hex head bolt
- 6mm wide leading edge with 70mm Tungsten tile fitted.
- Tungsten Tile fitted across underside of the wing.

Part No: BOSS \$55.14 each Inc GST



Talk to us about parts for IH 3-4 and IH 3-5 Disc Ploughs  
We have Great Western Tillage Discs available to suit all types of ploughs.



### SCARIFIER AND TILLAGE POINTS

	Part No	Size/Desc	Price Inc GST
<b>SCARIFIER</b>	SC20006	6"	\$8.49
<b>POINTS</b>	SC20007	7"	\$8.84
	SC20008	8"	\$10.30
	SC20009	9"	\$12.94
	SC20010	10"	\$15.55
<b>CHISEL</b>	RC00350-16	Reversible	\$31.43
<b>POINTS</b>	RC00350-22	Reversible	\$35.48
	JSL3920-88	Reversible	\$63.87



Call into Spare Parts to discuss your cultivation needs. Other manufacturer brands also available.



We are Bare-Co stockists.



Call in and see our range of products.



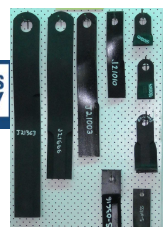
Talk to Spare Parts about getting a new Bare-Co ROPS and Canopy for your tractor.



### Slasher Blades



**Superior**



We sell Southern Cross Mowers, Slashers and Finishing Mowers and stock blades for these machines.



**Howard Blade Kits**  
Kit includes 2 Blades, 2 Bolts, 2 Bushes & 2 Nuts.



Suits Howard Nugget Slashers.

OPEN SATURDAY MORNINGS - Tamworth Branch from 9am to 12pm. Gunnedah Branch from 8:30am to 11:30am.

## **MONTHLY WINNERS** Congratulations to our Great Western Tillage Packs Winners:

*Darlisa Pty Ltd - Somerton, A & GS Clift - Breeza, KD, PG, DV & RJ Gillham - Boggabri*

*This month we have 3 **NEW HOLLAND BEANIES** to give away - simply return your payment by Thursday 24th March, 2014 to go into the draw. We would also remind customers that we accept Visa & MasterCard over the phone and Debit cards may be used at all our Branches.*



All payments by these methods are included in the monthly draw.

*Electronic/Internet Payments on the last day of the month cannot be allocated until the next day - it would assist us greatly if payments could be made prior to the last day of the month to allow receipting and allocation to accounts prior to Month end.....thank you.*

*For customers that use Internet Banking, our bank account details are:*

**Commonwealth Bank**

**BSB: 062 602**

**Account Number : 00 272 029**

**Please use your account number, name or invoice number as a reference.**


**It's On Again...**

Sunday  
4th May 2014

Nundle Recreation  
Ground, Oakenville Street, Nundle

Gates open at 10am, races all day with  
great prizes to be won. Fundraiser for the  
Nundle Public School P&C.

*More info: [www.nundle.com.au](http://www.nundle.com.au)*

the great nundle  
dog race 

### **Easter & ANZAC Day Trading Hours**

Thursday 17 April 2014

8.24pm to 5pm

**Good Friday** 18 April 2014

**CLOSED**

**Easter Saturday** 19 April 2014

**CLOSED**

**Easter Sunday** 20 April 2014

**CLOSED**

**Easter Monday** 21 April 2014

**CLOSED**

Tuesday 22 April 2014

8.24pm to 5pm

**ANZAC Day** Friday 25 April 2014

**CLOSED**

Saturday 26 April 2014 - **OPEN** - Tamworth 9am-12pm Gunnedah 8.30am-11.30am



*Just to keep you up to date:*

This is a picture of the Goodwin Kenny Touch Team at Gunnedah. They won the touch Grand Final on 22 March. The game went to full time and it was 4-all, so then they had to play extra time and within that time they had drop off (which means players had to drop off the field to make it more difficult). They ended up scoring with 4 people on the field which made them winners of D grade in the Summer Competition.

Front row: Jacob Newcombe, Piper Rankmore and Nautica Eather

Second Row: Nikki Bruce, Mikaela Pease, Jim Pease, Tahlia Horvat, Luke Curgenven

Back Row: Brady Eason, Cain Eather, Bianca Small, Blake Small and Jonathan Crowe



Yes, that is a John Deere Cake !!

- complete with John Deere tractor and planter, corn and irrigation syphons—Who would have thought?? Rob Rutter (from Quirindi and father of Jamie from the Tamworth office) recently celebrated his 55th Birthday and a few of the Goodwin Kenny team were invited to share in the festivities. Other photos from the evening show Rob wearing his blue & gold "New Holland" cap with pride and as you can imagine there was just a little bit of talk about the rain, the weather and farm machinery amongst the 80 or so family and friends in attendance. The Photo shows Denise Rutter, son Brady with Rob and Jamie Rutter with Denise's mum, Marlene Simmons. The cake looked good—great actually and was decorated by Rob's daughter-in-law, Kate Rutter. A good night was had by all !

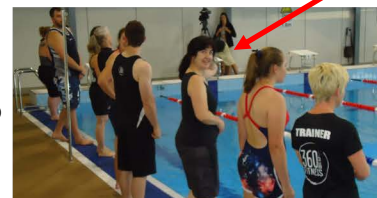
Last week 360 Fitness opened their new premises in Tamworth and I was one of the first 10 people to jump into the new heated pool. I had purchased some Ronald McDonald House Raffle Tickets some time ago and was surprised to receive a call from DJ to say I had won—but I would need to jump into the pool to retrieve my prize. After the shock had worn off I thought I would do this as the charity is such a worthy cause. So, last Friday, with my friend and qualified Lifesaver, Sharon Housden, with me for moral support, I took the plunge and I was lucky to retrieve a balloon in the pool with a Year's Free Pool Pass at 360 Fitness as my prize, which is great as I love to swim and the heated pool will be wonderful during winter—and who knows - I may get fit!

*Congratulations to Dwone Jones and Jay Lynch for their commitment to this business venture, it is great to see Tamworth with a heated pool at last.*



Another local venture worthy of praise is the Country Living Magazine which brings to the reader stories about our local area. The cover on the latest issue features Brown's Cows and they really are Brown's cows—owned by Wes and Julie Brown, Juleanwes Holsteins, Tamworth. A lovely story about a hardworking farming family. I thought I worked some long hours and now know how many hours are worked to produce milk (my second favourite drink!)

*Words of wisdom - Always remember that your present situation is not your final destination—the best is yet to come.*



Ready for the big swim.....  
and off I go !



....Susan Goodwin

# GOODWIN KENNY

Tamworth • Gunnedah • Armidale



USED EQUIPMENT  
APRIL 2014

## GOODWIN KENNY - USED EQUIPMENT

TAMWORTH - 02 6765 5244 SALES - TONY HOUSDEN - 0437 337 131

### USED TRACTORS

### GST INC

NEW HOLLAND MC28, Commercial Mower 6' Cut.....\$11,000.00  
NEW HOLLAND TD80D, 2008, 950 hours.....\$30,800.00  
JOHN DEERE 6210SE, 90HP, FWA, A/C CAB, 16x16 Synchro  
Trans, Forward/Reverse shuttle, 3pl, 2 remotes.....\$36,300.00  
NEW HOLLAND TS110, 4WD, ROPS, Quadmod Transmission,  
16x16, fitted with Challenge 3831 Loader.....**SOLD**  
NEW HOLLAND TM190, 190HP, FWA, Cab, 18 Speed Powershift,  
Super Steer Front Axle, 4 Remotes, 1,900hrs..\$143,000.00..**NOW..\$99,000.00**  
NEW HOLLAND T6030, 115hp, Range Command, 18F x 6R trans,  
Challenge L3900 Front End Loader, low hours.....\$99,000.00

### USED HAYGEAR

### GST INC

NEW HOLLAND SUPER 417, Small Square Baler.\$17,600.00...**\$16,000.00**  
CASE DCX 101, Mower Conditioner.....\$27,500.00...**\$22,000.00**  
NEW HOLLAND BR740A, Round Baler.....\$38,500.00...**\$35,000.00**



NEW HOLLAND MC28



NEW HOLLAND T6030



NEW HOLLAND TD80D



JOHN DEERE 6210 SE

## HAY MACHINERY SALE - All Machines Workshop Checked by Merv



CASE DCX101



NEW HOLLAND BR740A



NEW HOLLAND SUPER 417

for more photos visit: [www.goodwinkenny.com.au](http://www.goodwinkenny.com.au)



NEW HOLLAND SUPER 417

### CONSIGNMENT MACHINES - TAMWORTH

NEW HOLLAND SUPER 417, Small Square Baler **REDUCED.. \$12,000.00**  
NEW HOLLAND FRONT WEIGHTS,  
off TG285, suit T8, T8000, other TG's....  
\$3,000.00 **OR OFFER**



NEW HOLLAND WEIGHTS

Looking for Parts?

### WRECKING AT TAMWORTH

- New Holland BB940AP Big Square Baler.
- New Holland 317 Small Square Baler.
- SIP 470 Rake.

### USED TRACTORS ARMIDALE

NEW HOLLAND TD60D  
Challenge AP32 Plus Loader  
\$39,600.00 (Inc GST)

ARMIDALE - 02 6772 8124



### CONSIGNMENT MACHINE AT ARMIDALE

Fieldquip 6' Slasher .....**SOLD**  
6ft HV Earth Bucket, Euro Hitch,  
painted John Deere green..\$2,500.00



### We are the authorised dealers for:

AGPOINT- BARE-CO - CHALLENGE - DAVEY AFM - DAVIMAC - GREAT WESTERN TILLAGE - GYRAL - HOWARD -  
JANKE - JARRETT - JAYLOR - K-LINE - McHALE - MORRIS - NEW HOLLAND - SILVAN - JOHN SHEARER -  
SIMPLICITY AUSTRALIA - SIP - SOUTHERN CROSS AG MACHINERY - SUPERIOR - TAARUP

VISIT

[www.goodwinkenny.com.au](http://www.goodwinkenny.com.au)

TAMWORTH 246 BRIDGE ST (02) 6765 5244  
GUNNEDAH 42 MULLALEY RD (02) 6742 5777  
ARMIDALE 139 MILLER ST (02) 6772 8124

TONY HOUSDEN

PETER KENNY

GLENN FURNER

KEITH McPHIE



## GOODWIN KENNY - USED EQUIPMENT

GUNNEDAH - 02 6742 5777 A/HOURS: PETER KENNY 02 6742 4502  
GLENN FURNER 0429 650323



**Reduced to  
\$33,000.00**

NEW HOLLAND 1432



**Reduced to  
\$30,000.00**

KUHN FC500R

### USED TRACTORS

**NEW HOLLAND TD95D**, 98HP, 2010 model, Low Hours....\$39,600.00  
**CASE MXU110**, 116HP, FWA, Cab, 16x16 Semi Powershift Trans,  
with new Challenge Front End Loader with 4 in 1 Bucket.....\$81,000.00  
**NEW HOLLAND TM190**, 190HP, FWA, Cab, 4 Remotes, 18 speed  
Power Shift Trans, Super Steer front axle.....\$99,000.00  
**VERSATILE 935**, 330HP, 4WD, Cab, A/C, Dual Tyres.....\$ P.O.A

### GST INC

### HAYGEAR

**WELGER RP435**, Variable Chamber Round Baler.....\$27,500.00  
**KUHN FC500R**, Trailed Mower Conditioner.....\$33,000.00  
**NEW HOLLAND 1432**, Centre Pivot Trailed Mower  
Conditioner (Flail type conditioner), suit grass crops.....\$ 36,300.00  
**NEW HOLLAND BB960ARY**, Large Square Baler, 4x3x8, Silage Version  
with "W" Rotor Cutter Feeding system.....**SPECIAL PRICE \$99,000.00**

### GST INC

### TRADES COMING IN

**NEW HOLLAND 568**, Small Square Baler.....\$ T.B.A



**2010 MODEL  
Low hours**

NEW HOLLAND TD95D



NEW HOLLAND TM190



WELGER RP435



**Reduced to  
\$99,000.00**

NEW HOLLAND BB960ARY



**Reduced to  
\$79,000.00**

CASE MXU 110

### COMBINE HARVESTERS

**NEW HOLLAND TR70**, 22' open front & Comb Trailer  
Twin Rotor Combine.....\$38,500.00....to \$35,000.00 **SALE \$18,000.00**  
**NEW HOLLAND TR85**, Twin Rotor Harvester, H/Static Drive,  
1992 with NH705 25' Bat Reel..\$49,500.00 to \$38,500.00 **SALE \$30,000.00**  
**NEW HOLLAND 8080**, H/Static Trans, 3,459hrs, 25' front.  
.....\$ 77,000.00 to \$55,000.00 **SALE \$25,000.00**  
**NEW HOLLAND TR89**, Twin Rotor Combine, H/Static Drive, Straw Chopper,  
72C 30' O/F Bat Reel, Comb Trailer .....\$157,300.00 **SALE \$100,000.00**  
**NEW HOLLAND TR98**, Combine Harvester with NH971 BatReel Front &  
Inverell Welding Comb Trailer...\$176,000.00 **SALE \$100,000.00**

### GST INC

### IMPLEMENTS

**CHALLENGE BUCKET**, 2400mm, STD Earth, 21 Series lugs.....\$2,500.00  
**JOHN SHEARER**, 7 Tine Hydraulic Trashworker/Chisel Plough.....\$4,950.00  
**GYRAL TG/SC PLANTER**, 36ft, Hyd Blower, 2 x 1 Ton Bins.....\$27,500.00

### GST INC



**SALE**



JOHN SHEARER 7 TYNE  
HYDRAULIC CHISEL  
PLOUGH



CHALLENGE 8' (2.4M) BUCKET



**Make an offer**

GYRAL TG/SC PLANTER 36' HYD BLOWER, 2 X 1 TON BINS

### CONSIGNMENT MACHINES

**NEW HOLLAND TS135A**, 135HP, FWD, Cab, Challenge AP38 Plus Loader & 2160mm Bucket, Semi-Powershift Transmission.....\$69,000.00  
**KUHN FC302RG**, Trailed Disc Mower Conditioner, 3m cut, rubber Conditioner Rolls, Hydraulic Swing, very good condition.....\$32,450.00  
**NEW HOLLAND BR7060**, Variable Chamber, endless belts, 2.30m Extra Sweep pick up, edge wrap net wrap system, 3yrs old .....\$38,500.00

### GST INC

for more photos visit [www.goodwinkenny.com.au](http://www.goodwinkenny.com.au)