



#### SIMPLICITY is the answer for Bernie

Bernie Morrissey, "Salisbury Park", Blackville is pictured at the installation of his new Simplicity Allrounder planter bar. Bernie required the bar configured to fit with his current farming methods so 8.5 metre coverage with 10" tine spacing was the chosen option. Simplicity's hydraulically adjustable tines with breakout of 100 to 700 pounds and adjustable depth straight planting tines along with a single shoot sowing kit and rear drawbar to connect to Bernie's existing Simplicity 4500 air cart completed the unit.



#### Rotary Rake does the job

Angus Shepherd, "Burrulaa Crossing", Manilla purchased a new Farmliner 350/9 rotary hay rake (distributed by Inlon) featuring tandem axle suspension for good ground following capability, nine rotor arms for cleanest raking and sealed cam track gearbox running in liquid grease, with an adjustable curtain for operating widths from 3.4 to 3.6 metres this little "Budget" rake is ready for any job.



#### Time for some new machines

Long-time Dungowan farmer, Bill Hoad, has purchased a new Silvan 400lt Pasture Pak boom sprayer and a Jarrett MDX180 (6') slasher. These are replacements for other machines that Bill says have done many years of work on the farm and are beyond economical repair. The Silvan sprayer will be used for paddock spraying around the farm. The 400lt capacity works in well for the paddock sizes and the new 8m Field boom from Silvan is a step up from the old boom with a stronger design, and protected nozzles which will help reduce downtime. The Jarrett MDX180 is a Medium/Heavy duty slasher that is robust enough for most farm slashing – made in Australia for many years of work. Bill Hoad is pictured with his machines.



#### Built by New Holland – financed by CNHi Capital

With the change in interest rates – now is a good time to consider buying good quality used New Holland machinery from Goodwin Kenny – call in soon to see how CNHi Capital can assist you into your next machine.

#### USED New Holland machinery rate

6.96% pa (\* effective from 1-3-2015, subject to change without notice)  
12 to 60 month terms  
Tailored finance packages  
No Early Termination Fees

#### Finance for USED New Holland T6030 Tractor (pictured)

with Front End Loader – 4in1 Bucket

Price \$99,000.00 including GST

Used New Holland equipment rate 6.96% p.a.

\$20,000 Deposit (20%)

3 year term

\$2,464.41 per month or \$569/week

5 year term

\$1,579 per month or \$365/week

Terms and Conditions apply, subject to approval by CNHi Capital



Used New Holland T6030, 115 horsepower, 6 cylinder, Common Rail, Range Command Semi Powershift, 19 Forward x 6 Reverse Gears, Challenge L3900 Front End Loader with 4-in-1 bucket, New Tyres, 1950 hours



# GOODWIN KENNY

Tractor and Farm Machinery  
Dealers since 1962.

**For all your Scheduled  
Services and Repair work  
on New Holland, Fiat,  
Ford, Case & Versatile  
Tractors, Balers and  
Haymaking equipment,  
Silvan Sprayers and all  
slashers - call our  
experienced team.**

**ARC RTA AIRCONDITIONING  
LICENCE AU11959**



**Ken Hatton**  
Tamworth

Service Manager at  
Tamworth. Over 10 years  
with Goodwin Kenny.  
Experienced with New  
Holland, Fiat, Case &  
Ford tractors & Air Cond.



**Merv Leard**  
Tamworth

Over 19 years with  
Goodwin Kenny.  
Specialist with  
New Holland Balers,  
mower conditioners and  
haymaking.



**Levi Alley**  
Tamworth

Commenced training as  
Apprentice in 2005 &  
now has over 10 years  
with Goodwin Kenny.  
All Tractors and licenced  
for Air Conditioning.



**Con Smit**  
Tamworth

Over 31 years with  
Goodwin Kenny. Has  
worked on many Fiat  
tractors and crawlers and  
is now passing on his  
knowledge to the others.



**Nathan Keel**  
Tamworth

Commenced Mechanical  
Apprenticeship in 2014.  
Working with Merv to  
acquire knowledge of  
Balers & Haymaking gear.



**Dave Pease**  
Gunnedah

Service Manager at  
Gunnedah Branch. Nearly  
10 years with Goodwin  
Kenny. Works on New  
Holland, Case & Ford  
Tractors, Guidance and  
Air Conditioning.



**Lachie McARTHUR**  
Gunnedah

4th Year Apprentice -  
commenced in 2012.  
Has an Air Conditioning  
Trainee Licence.

## NEW machines in Stock - TODAY

### *Digga* - Australian made Post Hole Diggers

- 3pl, PTO drive, 300mm Auger with  
Hard Ground Teeth ..... 2 in stock - \$2,750 inc GST ea
- 1 x *Digga* Hydraulic Drive PHD FEL mount in stock  
..... \$4,290 inc GST



### *Challenge Implements*

- Round Bale/Silage Grab  
- AUS and EURO Hitch  
2 in Stock - \$3,410 inc GST



- Big Square Bale Spike  
2x1100mm & 2x810mm spikes AUS Hitch  
2 in Stock - \$2,035 inc GST



- Counterweight  
Box - 3pl,  
Holds to 1,000 kg,  
1 in stock  
\$1,760 inc GST

- 3pl Big Square Bale Spike  
2 x 810 mm and  
2 x 1100mm spikes, 1 in stock  
\$2,123 inc GST



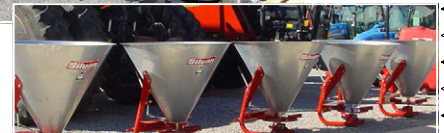
- Pallet Forks - 2500kg  
- AUS Hitch, 1 in Stock  
\$2,354 inc GST



### *Silvan Pasturepak Sprayers*

Call for pricing

- 800lt - 8m Boom, Hose Reel  
2 in Stock
- 600lt - 6m Boom, Hose Reel  
1 in Stock
- 600lt - 8m Boom, Hose Reel  
1 in Stock
- 400lt - 6m Boom, Hose Reel  
2 in Stock



**GALVANISED HOPPER SPREADERS**

### *Slashers*

- Jarrett* MDX 150 (5') & 180 (6')  
75hp gearbox - \$3,520 inc GST
- Howard* Nugget NUG 150(5')  
2 in Stock - \$2,195 inc GST



### *Ripper*

- Jarrett* Single tine SR100  
1 in Stock - \$990.00 inc. GST



### *Rake*

- Kverneland Taarup* - 9443  
Single Rotor Hay Rake  
- 4.3mt working width  
1 in Stock - \$ Special inc GST



### *Wrapper*

- McHale* - 991BE  
Round bale wrapper - single dispenser  
1 in Stock - \$ Special inc GST





# GOODWIN KENNY

Tractor and Farm Machinery  
Dealers since 1962.

**For all your Spare  
Parts and great  
service from our  
experienced team**



**David Hartmann**  
Tamworth

Over 6 years with  
Goodwin Kenny. Over 35  
years in Ag industry.  
Experienced with  
New Holland, Case, Ford,  
John Shearer & Silvan.



**Peter Mackay**  
Tamworth

Over 7 years with  
Goodwin Kenny. Many  
years in Council & Private  
Business. Experienced with  
New Holland, Fiat, Ford,  
John Shearer & Silvan.



**Shane Bridges**  
Tamworth

Newest member - Goodwin  
Kenny team. Over 20 years  
in Ag Industry.  
Experienced with Case,  
John Shearer, Gyril, Silvan,  
Points and discs.



**Mark Kenny**  
Gunnedah

Over 33 years with  
Goodwin Kenny.  
Experienced with New  
Holland, Versatile, Fiat,  
Simplicity, Gyril,  
Connor Shea, John Shearer.



**Ken Mack**  
Gunnedah

Over 13 years with  
Goodwin Kenny experienced  
with New Holland, Gyril,  
John Shearer, Howard,  
Morris, Silvan & Simplicity.



**Keith McPhie**  
Armidale

Nearly 12 years with  
Goodwin Kenny.  
At Armidale - a wide range  
of parts: Filters, Oils, Twine,  
Slasher Blades, Bolts & Nuts  
Points, BareCo, Silvan, SXM

**\*AGPOINT \*BARECO \*CHALLENGE  
\*DAVEY AFM \*DAVIMAC  
\*GREAT WESTERN TILLAGE \*GYRAL  
\*HOWARD \*JANKE \*JARRETT \*JAYLOR  
\*MCMALE \*MURRAY HARROWS  
\*MORRIS \*NEW HOLLAND \*SILVAN  
\*JOHN SHEARER \*SIMPLICITY \*SIP  
\*SXM \*SUPERIOR \*TAARUP \*VICON**

246 Bridge St. **TAMWORTH**  
(02) 6765 5244  
42 Mullaley Rd. **GUNNEDAH**  
(02) 6742 5777  
139 Miller St.  
**ARMIDALE**  
(02) 6772 8124  
[www.goodwinkenny.com.au](http://www.goodwinkenny.com.au)



**GET YOUR  
SPRAYING  
SORTED  
WITH SILVAN**



## New Holland Toys



Scale: 1/64 \* Prices Inc GST

New Holland  
7740 Tractor  
Part: ERT13778  
\$12.54\*

New Holland  
BR7090 Baler  
Part: ERT13811  
\$10.82\*

New Holland  
T8020 Tractor  
with Forage  
Harvester  
& Wagon  
Part: ERT13811  
\$35.64\*

## SILVAN POLYTUFF DIESEL TANKS

The diesel transfer tanks are fitted with a heavy duty 12 volt  
Piusi diesel pump made in Italy,  
lockable filling cap & cover,  
auto shut off nozzle.

### 200 Litre DieselPro Tank

**Tank Size:** 200 Litres  
**Pump Size:** 45.00L/min  
**Height/Width/Depth:**  
610mm/640mm/1100mm  
**Product Weight:** 24kg  
**Part No:** SQDN200L-X1



**\$1,149.00 inc GST - Summer Catalogue \$1,089.00 valid 15/3/15**

### 400 Litre DieselPro Tank

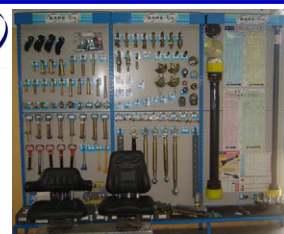
**Tank Size:** 400 Litres  
**Pump Size:** 45.00L/min  
**Height/Width/Depth:**  
590mm/820mm/1700mm  
**Product Weight:** 35kg  
**Part No:** SQDN400L-X1



**\$1,459.00 inc GST - Summer Catalogue \$1,299.00 valid 15/3/15**



**We are  
Bare-Co  
stockists.**



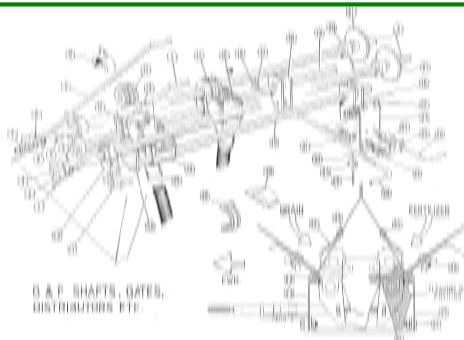
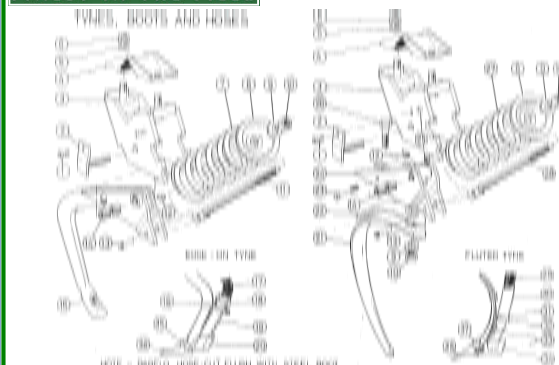
*Call in and see our range of products.*



Talk to Spare Parts about  
getting a new Bare-Co  
ROPS and Canopy



**We have Parts in stock for your  
John Shearer machines**



**OPEN SATURDAY MORNINGS - Tamworth Branch from 9am to 12pm. Gunnedah Branch from 8:30am to 11:30am.**



## **MONTHLY WINNERS** Congratulations to our New Holland Cap Winners:

WM & KL Campbell - Gunnedah, Gostwyk Group - Uralla, Garry & Jan Moore - Werris Creek

This month we have 3 **NEW HOLLAND CAPS** to give away - simply return your payment by Thursday 26th March, 2015 to go into the draw.

We would also remind customers that we accept Visa & MasterCard over the phone and Debit cards may be used at all our Branches.

All payments by these methods are included in the monthly draw.

Electronic/Internet Payments on the last day of the month cannot be allocated until the next day - it would assist us greatly if payments could be made prior to the last day of the month to allow receipting and allocation to accounts prior to Month end.....thank you.



For customers that use Internet Banking, our bank account details are:

**Commonwealth Bank**

**BSB: 062 602**

**Account Number : 00 272 029**

**Please use your account number, name or invoice number as a reference.**



## **MOONBI/KOOTINGAL MOTOR SHOW & HISTORICAL MACHINERY EXHIBITION**

**7 & 8 MARCH 2015**

**MOONBI SHOWGROUND**

Vintage Cars, Trucks & Tractors, Trade Stores, Swap Sites, Antiques & Collectables & more.

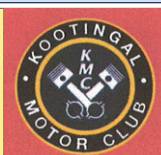
\$5 Adults

\$3 Seniors

Under 16 Free

9am Start

Info: [www.kootingalmotorclub.com.au](http://www.kootingalmotorclub.com.au)



Just to keep you up-to-date:



**Who sent the flowers?** I received this lovely box of flowers this week. No, I don't have a secret admirer! They were grown at our Armidale branch and Keith kindly thought he would share them with us. Due to the heat the Dahlias don't last long in Tamworth but they seem to enjoy the climate at Armidale, call in and see them growing along the fence.



I had a call from a customer at Dungowan this month to let me know that he had a pair of New Holland 256 rakes with a hitch stolen. Just a reminder to all our customers – **secure your property, record the serial numbers & take photos of your machinery for your records.**

### **Westpac Rescue Helicopter**

We all drive around the district thinking of what we need to do and where are we going today – every now and then though, something goes astray and some of us have an accident on the road, on the farm, in the yards or one of our kids gets very ill. Most of us have become accustomed to seeing or hearing the bright yellow chopper thunder by to assist someone in need and who knows how many lives have been saved by the service and how many lives have had the impact of an accident or illness lessened by having the Rescue Chopper closer at hand. This year marks 15 years for the Tamworth based service and 50% of the funds are provided from the NSW Health Department so the community support is what makes the service free for everyone who needs it, and pays for some of the equipment to enhance the service to us, our families and friends travelling through the New England and North West.

Here's the rub – in late May this year our Tamworth Salesman, Tony Housden is participating in the Outback Mountain Bike ride – Cameron



Corner back to Tamworth – **1,500 kilometres approx. over 15 ride days** – “yep, he is nuts” – with the aim to raise some funds towards the Westpac Rescue Helicopter service here in our area - Tamworth and the New England North West.

Tony is seeking your support to raise approximately \$3,000 - 4,000 in sponsorship, he is happy to accept any donation, small or otherwise (**all donations over \$2.00 are Tax Deductible**) to go towards our local communities lifesaving service.

Please note that all the donations go direct to the Rescue Service as Tony has taken Annual Leave to participate and has paid all the rider costs from his own pocket.

He has made his own donation of \$250.00 and, of course, Goodwin Kenny will support this worthy cause also. Donations can be made by contacting Tony at the Tamworth Branch on 67655244 or 0437 337131 or email [tony.housden@goodwinkenny.com.au](mailto:tony.housden@goodwinkenny.com.au) or call in & see him. Tony currently rides about 140 kilometres a week, we will keep you updated on his journey.

A couple of events this weekend - **Walcha Show** on Friday 6th and Saturday 7th March, and the **Moonbi/Kootingal Motor Show & Historical Exhibition** at Moonbi on Saturday 7th and Sunday 8th March - how do we fit it all in our busy calendar?

**Some food for thought** - the importance of grammar and punctuation becomes very evident in this little caption I found at right.

...Susan Goodwin



An English professor wrote the words :

**"A woman without her man is nothing"**

on the chalkboard and asked his students to punctuate it correctly.

All of the males in the class wrote:

**"A woman, without her man, is nothing."**

All the females in the class wrote:

**"A woman: without her, man is nothing."**

**Punctuation is powerful**



# GOODWIN KENNY

Tamworth • Gunnedah • Armidale



USED EQUIPMENT  
MARCH 2015



**NEW HOLLAND SUPER 417**  
Small Square Baler **\$16,000.00 inc GST**



**NEW HOLLAND 499 - offers considered**  
Haybine Mower Conditioner



**NEW HOLLAND BR740A**  
Round Baler.  
This baler has had an extensive overhaul.  
New belts, chains and sprockets as required.  
**\$35,000.00 inc GST**



**NEW HOLLAND TT75**  
75 Horsepower,  
4 cylinder, 8 Forward x 2 Reverse Transmission, ,  
640 Hours, Tidy Tractor  
**\$23,100.00 inc GST**



**JOHN DEERE 6210SE**  
90HP, FWA, A/C CAB,  
16x16 Synchro Trans,  
Forward/Reverse shuttle,  
3pl, 2 remotes.  
**\$36,300.00 inc GST**



**NEW HOLLAND T6030**  
115 HP, 6 Cylinder, Common Rail, Range Command Semi Powershift, 19 Forward x 6 Reverse Gears, Challenge L3900 FEL .With 4-in-1 bucket  
**\$99,000.00 inc GST... Standard bucket \$95,000.00 inc GST**



**NEW HOLLAND TM190**  
190HP, FWA, Cab, 18 Speed Powershift, Super Steer Front Axle, 4 Remotes, 1900 hours.  
**\$99,000.00 inc GST**

## TAMWORTH

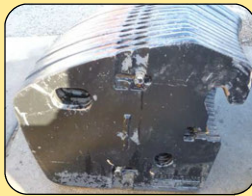


(02)  
6765 5244

246 Bridge Street

Tony Housden  
A/Hrs: 0437 337 131

## CONSIGNMENT MACHINES - TAMWORTH



**NEW HOLLAND FRONT WEIGHTS,**  
off TG285,  
suits T8, T8000,  
other TG's  
**\$3,000.00 inc GST OR OFFER**

## ARMIDALE



(02)  
6772 8124

139 Miller Street

Keith McPhie

## CONSIGNMENT MACHINES - ARMIDALE



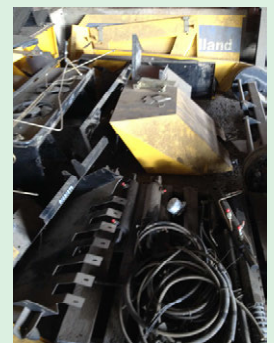
**SILVAN 200 LITRE AIRBLAST SPRAYER**

Never had chemical in it, used on organic grapes. Very tidy, only 50 hours use.  
**\$3,300.00 inc GST**

## Looking for Parts? WRECKING AT TAMWORTH



**New Holland 317**  
Small Square Baler



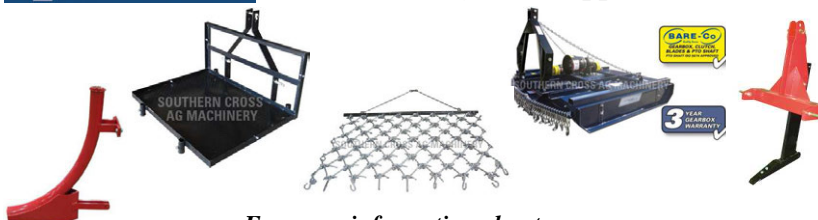
**New Holland BB940AP**  
Big Square Baler



**SIP 470 Rake**



**Carryalls, Drag Harrows, Slashers, Pipe Layers & Rippers**



For more information about new  
SXM machines drop in or call Keith at ARMIDALE on 6772 8124

Visit: [www.goodwinkenny.com.au](http://www.goodwinkenny.com.au)

**We are the authorised dealers for:**

**AGPOINT - BARE-CO - CHALLENGE - DAVEY AFM - DAVIMAC - GREAT WESTERN TILLAGE - GYRAL - HOWARD - JANKE - JARRETT - JAYLOR - K-LINE - McHALE - MORRIS - NEW HOLLAND - SILVAN - JOHN SHEARER - SIMPLICITY AUSTRALIA - SIP - SOUTHERN CROSS AG MACHINERY - SUPERIOR - TAARUP - VICON**



# GOODWIN KENNY

Tamworth • Gunnedah • Armidale



## USED EQUIPMENT MARCH 2015

**GUNNEDAH - 02 6742 5777 A/HRS: PETER KENNY: 6742 4502 GLENN FURNER 0429 650 323**



**\$79,000.00**

**CASE MXU110**  
116HP, FWA, Cab, 16x16 Semi Powershift Trans, with new Challenge Front End Loader and 4 in 1 Bucket.

**SPECIAL \$79,000.00 inc GST**



**\$99,000.00**

**NEW HOLLAND TM190**  
190HP, FWA, Cab, 4 Remotes, 18 speed Power Shift Transmission, Super Steer front axle.  
\$99,000.00 inc GST



Peter Kenny  
A/Hrs:  
02 6742 4502



Glenn Furner  
A/Hrs:  
0429 650323



**\$55,000.00**

**CASE LBX332**  
Large Square Baler, 8x3x3, Rotor Cutter Model, Single Axle. Well maintained Baler.  
\$55,000.00 inc GST



**SPECIAL \$30,000.00**

**NEW HOLLAND 1432**  
Centre Pivot Trailed Mower Conditioner (Flail type conditioner), suit grass crops.

**SPECIAL \$30,000.00 inc GST**



**\$99,000.00**

**NEW HOLLAND BB960ARY**  
Large Square Baler, 4x3x8, Silage Version with "W" Rotor Cutter Feeding system.

**SPECIAL \$99,000.00 inc GST**



**NEW HOLLAND TR70**  
22' open front & Comb Trailer  
Twin Rotor Combine  
**\$18,000.00 inc GST**



**\$30,000.00**

**NEW HOLLAND TR85**  
Twin Rotor Harvester, H/Static Drive, 1992 with NH705 25' Bat Reel  
**\$30,000.00 inc GST**



**NEW HOLLAND TR89**  
Twin Rotor, H/Static Drive, Straw Chopper, 72C 30' O/F Bat Reel and Comb Trailer  
**\$100,000.00 inc GST**



**NEW HOLLAND TR98**  
Combine Harvester with NH971 Bat Reel Front & Inverell Welding Comb Trailer  
**\$100,000.00 inc GST**



**CHALLENGE BUCKET**  
2400mm, STD Earth, 21 Series lugs  
\$2,500.00 inc GST



**\$17,500.00**  
As is - where is

**GYRAT TG/SC PLANTER**  
36ft, Hydraulic Blower, 2 x 1 Ton Bins \$17,500.00 inc GST



### COLLECTORS DREAM

**VERSATILE 935**, 330HP, 4WD, Cab, A/C, Dual Tyres.....\$ P.O.A

*offers considered*



### USED MACHINERY INTEREST RATES

USED New Holland Machinery 6.96% p.a.  
USED (Non New Holland) Machinery 7.82% p.a.  
Terms and conditions apply. Subject to approval.

For more photos visit: [www.goodwinkenny.com.au](http://www.goodwinkenny.com.au)