



## New Holland T5.95 Electro Command put to work in the hills

After 9 reliable years of service the New Holland TL100A at “Carnegie” Weabonga has been traded on a New Holland T5.95 Electro Command. The tractor is used for general work around the farm, often in steep areas. The new New Holland T5.95 EC has the rear tyres widened to over 2500mm (8¼ feet) for stability and with the semi-powershift Electro Command transmission giving press button gear changes there will be an added degree of safety for the operators. Two features on the new tractor that will assist the operation are the variable aggressiveness of the Forward/Reverse Shuttle (either “gentle” for general work or “rapid” for loading) and the continuous ring wheel lugs to eliminate cracked rims on the front. The T5.95 Electro Command cab is much improved in comparison to the earlier models with improved visibility, roof window for in shed or under tree work, full ROPS and also Grade 1 FOPS (Fall On Protective Structure) at Carnegie have a very high Safety at Work attitude which is great to see and of the new tractor, which is just one part of this safety attitude, a real credit

Pictured: Troy Robinson (staff) and Barry Green (Manager) with Goodwin Kenny's Tamworth Salesman, Tony Housden.



## WINNER ANNOUNCED

New Holland have announced the winner of the COTESI PORTUGAL TRIP competition that was for all purchasers

of Cotesi Twine who registered their entries on the New Holland Parts website. And the winner is Allan Bowen, "Maloa", PO Box 192 Biloela QLD. The prize valued at \$9,500 included Return economy flights from a Capital City in Australia to Lisbon - Portugal, 7 nights accommodation, 4-star hotel, twin-share, \$2,000 spending money on a pre-loaded VISA gift card and a one day Cotesi factory tour.

Check out the website **[www.newhollandparts.com.au](http://www.newhollandparts.com.au)** for Special Offers, Parts information and to view our latest catalogue on-line by entering **Tamworth or Gunnedah** in “Find your Local dealer and

**Catalogue”**  
or call in  
and collect  
a copy  
(the one  
with Mark  
Warden  
on the  
cover).



## NEW HOLLAND T4 DUAL COMMAND

Finally the New Holland T4 Dual Command Tractor is on the way to Tamworth.

This tractor is the replacement for the popular New Holland T5000 series and the TLA series before that.



- New and improved Cab with roof window, all-round better visibility and quieter inside.
  - Fully integrated Joystick for easier Front End Loader operation.
  - 24F x 24R Dual Command Transmission, mechanical shift with 2 speed power-shift.
  - New Common rail, Turbo-intercooled engine for greater responsiveness, fuel efficiency and emissions control.
- 

**For more information on the T4 Dual Command range of tractors contact Tony Housden on 67655244 and Glenn Furner on 67425777.**

## SECURE your PROPERTY and HOME with a Silvan Selecta Wide Angle Motion Activated 12MP Security Camera

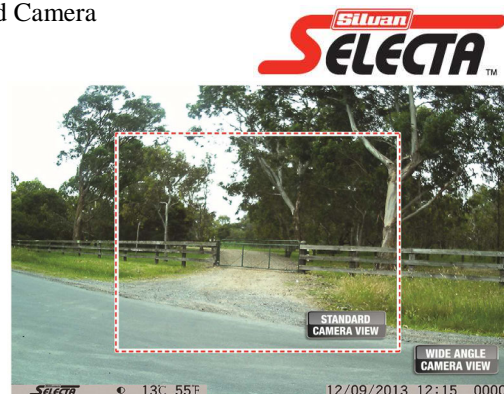


- 120° wide angle lens captures a larger area compared to standard Camera
- Comes with a 16GB SD Card
- Ideal for close-in targets or objects in peripheral vision
- Long battery life - standby up to 9 months
- Day and night use
- IP54 water proof rating
- Motion activated - records videos and photos

**Part No: SECURE120 \$395.00 inc GST**

- Standard 52° View Motion Activated 12MP Security Camera  
**Part No: SECURE01 \$299.00 inc GST**
- Adjustable wall mounting bracket to suit Motion Activated Security Camera (Mounting screws included)

**Part No: SECURE02 \$8.30 inc GST**





# GOODWIN KENNY

Tractor and Farm Machinery  
Dealers since 1962.

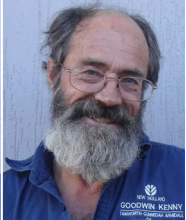
**For all your Scheduled Services and Repair work on New Holland, Fiat, Ford, Case & Versatile Tractors, Balers and Haymaking equipment, Silvan Sprayers and all slashers - call our experienced team.**

**ARC RTA AIRCONDITIONING LICENCE AU11959**



**Ken Hatton**  
Tamworth

Service Manager at Tamworth. Over 10 years with Goodwin Kenny. Experienced with New Holland, Fiat, Case & Ford tractors & Air Cond.



**Merv Leard**  
Tamworth

Over 19 years with Goodwin Kenny. Specialist with New Holland Balers, mower conditioners and haymaking.



**Levi Alley**  
Tamworth

Commenced training as Apprentice in 2005 & now has over 10 years with Goodwin Kenny. All Tractors and licenced for Air Conditioning.



**Con Smit**  
Tamworth

Over 31 years with Goodwin Kenny. Has worked on many Fiat tractors and crawlers and is now passing on his knowledge to the others.



**Nathan Keel**  
Tamworth

Commenced Mechanical Apprenticeship in 2014. Working with Merv to acquire knowledge of Balers & Haymaking gear.



**Dave Pease**  
Gunnedah

Service Manager at Gunnedah Branch. Nearly 10 years with Goodwin Kenny. Works on New Holland, Case & Ford Tractors, Guidance and Air Conditioning.



**Lachie McARTHUR**  
Gunnedah

4th Year Apprentice - commenced in 2012. Has an Air Conditioning Trainee Licence.

## MOONBI / KOOTINGAL MOTOR SHOW & HISTORICAL MACHINERY - 2015

Saturday 7th and Sunday 8th March saw many people visiting the Moonbi Showground for the Kootingal Motor Club annual event.

This year there was a great display of working tractors and engines, restored tractors, vintage cars and trade stalls.

Of particular interest was a **McCORMICK Deering Farmall Cub**, Year Model 1947 - Restored by John Barwick in 2008.

The tractor has been with the family members since new. It was used mainly for raking Lucerne hay, driving a small hammer mill and pumps. The Cub was manufactured by International Harvester especially for flower and vegetable growers. It is the smallest tractor ever made by the Company. Many specially designed implements were available. Over 200,000 were made between 1947 and 1964. Spare Parts are still readily available from the USA. Engine IHC petrol 59.5 cu.in. IHC Magneto, IHC Carburettor and Delco Remy electrics. The Nebraska test in October 1947 indicated 6.75 Drawbar Horsepower and 8.32 Belt HP.

This tractor won Best Restored Tractor on display.

**The Conquip Bale Loader** - a ground driven bale loader used by the late Reg Glasson, Mt Pleasant, Dungowan.

Manufactured by Conquip, Auburn, Sydney around 1954/1960. (Loaned for display by Mr & Mrs Kim Glasson, Brumby's Run, Dungowan.) The display included an old advertisement which described the loader as **"Revolutionary Low Cost Bale Loader - the Driver Picks Up and Loads a Full Load of Round or Oblong Bales in a Few Minutes Without Stopping the Truck"**.



## Engine Coolant

As we come into the cooler months it is vital to check and maintain the coolant in your tractor. The wrong coolant can cause irreparable damage to your engine and cooling system. Coolant controls corrosion (rust), assists cooling, resists freezing, reduces cavitation that leads to pitting, reduces the build-up of minerals, and much more.

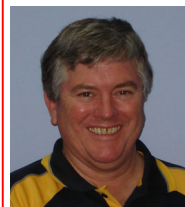
**If you have not replaced your coolant in the last 2 years - NOW is the time. It does not last forever and just like oil must be changed regularly, either 2 years or 1200 hours.** (Refer to Operator Manual) With new engine technologies coming through new coolant technology follows - it is VITAL that you check the coolant required for your machine and get the correct one, it is also vitally important that you do not mix coolants with some of the new products. If you have any questions or doubts about what the requirements for your machinery are, please call our Gunnedah or Tamworth Service departments.



Tony Housden will be riding in the **Westpac Outback Mountain Bike Ride** from Cameron Corner to Tamworth (a 1500 km journey) in May.

Any donations to the Westpac Rescue Helicopter Service to sponsor Tony can be made by calling Tony on 0437 337131

Westpac Rescue Helicopter Service



or email  
tony.housden@goodwinkenny.com.au  
(all donations over \$2.00 are Tax Deductible) and will go towards maintaining this very valuable service in our region.

## WEAN PICNIC RACES

SATURDAY 4TH JULY 2015

**1915**

Join us for an historical theme day as we remember 1915 and the GREAT WAR

He Launched a Nation...

COME RACE WITH US, & REMEMBER THEM!!

For those who don't wish to costume...

For more info go to: [www.weanraces.com.au](http://www.weanraces.com.au)

2015 Beneficiary

weanraces.com.au





# GOODWIN KENNY

Tractor and Farm Machinery  
Dealers since 1962.

**For all your Spare  
Parts and great  
service from our  
experienced team**



**David Hartmann**  
Tamworth

Over 6 years with  
Goodwin Kenny. Over 35  
years in Ag industry.  
Experienced with  
New Holland, Case, Ford,  
John Shearer & Silvan.



**Peter Mackay**  
Tamworth

Over 7 years with  
Goodwin Kenny. Many  
years in Council & Private  
Business. Experienced with  
New Holland, Fiat, Ford,  
John Shearer & Silvan.



**Shane Bridges**  
Tamworth

Newest member - Goodwin  
Kenny team. Over 20 years  
in Ag Industry.  
Experienced with Case,  
John Shearer, Gyrat, Silvan,  
Points and discs.



**Mark Kenny**  
Gunnedah

Over 33 years with  
Goodwin Kenny.  
Experienced with New  
Holland, Versatile, Fiat,  
Simplicity, Gyrat,  
Connor Shea, John Shearer.



**Ken Mack**  
Gunnedah

Over 13 years with  
Goodwin Kenny experienced  
with New Holland, Gyrat,  
John Shearer, Howard,  
Morris, Silvan & Simplicity.



**Keith McPhie**  
Armidale

Nearly 12 years with  
Goodwin Kenny.  
At Armidale - a wide range  
of parts: Filters, Oils, Twine,  
Slasher Blades, Bolts & Nuts  
Points, BareCo, Silvan, SXM

**\*AGPOINT \*BARECO \*CHALLENGE  
\*DAVEY AFM \*DAVIMAC  
\*GREAT WESTERN TILLAGE \*GYRAL  
\*HOWARD \*JANKE \*JARRETT \*JAYLOR  
\*McHALE \*MURRAY HARROWS  
\*MORRIS \*NEW HOLLAND \*SILVAN  
\*JOHN SHEARER \*SIMPLICITY \*SIP  
\*SXM \*SUPERIOR \*TAARUP \*VICON**

246 Bridge St. **TAMWORTH**  
(02) 6765 5244  
42 Mullaley Rd. **GUNNEDAH**  
(02) 6742 5777  
139 Miller St.  
**ARMIDALE**  
(02) 6772 8124  
**www.goodwinkenny.com.au**



## SILVAN SELECTA 12 VOLT DIESELPRO DIESEL TANKS

The DieselPro diesel transfer units are available in 200 & 400 litre capacities. The tanks are manufactured with a unique diesel grade polyethylene that is UV stabilised and impact resistant. The colour grey denotes diesel. Heavy duty reliable 12 volt pumps are from Italy, made by Piusi, a world class pump manufacturer. Also features a lockable filling cap and a lockable cover to protect your diesel.  
- 45 Litres/min open flow \* Prices include GST



**SECURE  
YOUR  
DIESEL**

**200 Litre**  
**\$1,199.00**  
*SQDN200L-X1*

**400 Litre**  
**\$1,490.00**  
*SQDN400L-X1*



## PARTS FOR YOUR GYRAL MACHINERY STOCKED IN TAMWORTH AND GUNNEDAH



**Great  
Western  
Tillage**

### SCARIFIER AND TILLAGE POINTS

	Part No	Size/Desc	Price Inc GST
<b>SCARIFIER</b>	SC20006	6"	\$8.49
<b>POINTS</b>	SC20007	7"	\$8.84
	SC20008	8"	\$10.30
	SC20009	9"	\$12.94
	SC20010	10"	\$15.55
<b>CHISEL</b>	RC00350-16	Reversible	\$31.43
<b>POINTS</b>	RC00350-22	Reversible	\$35.48
	JSL3920-88	Reversible	\$65.78



Talk to us about parts for  
IH 3-4 and IH 3-5 Disc Ploughs  
*We have Great Western Tillage Discs  
available to suit all types of ploughs.*



*Call into Spare Parts to  
discuss your  
cultivation needs.  
Other manufacturer  
brands also available.*



**Great  
Western  
Tillage**

### Pasture Seeder Baker Boots



- Bolt on Baker Boot with 40mm wing/boot.
  - Angled Tungsten tile fitted to leading edge for better trash flow & hard facing applied to other key wear areas.
  - Suits most common Baker Boot Drills with 2 x 3/8" bolt holes @ 60 or 63mm centre.
- Part No: BB989881 \$51.70 each Inc GST*

### Bolt-On Super Sower (BOSS)



- Single 7/16 hex head bolt
- 6mm wide leading edge with 70mm Tungsten tile fitted.
- Tungsten Tile fitted across underside of the wing.

*Part No: BOSS \$55.14 each Inc GST*



## DON'T BE CAUGHT OUT WITH A FLAT BATTERY!

Spare Parts have a range  
of genuine New Holland Exide Batteries  
for your tractors and machinery.

These batteries are **AUSTRALIAN MADE.**



**OPEN SATURDAY MORNINGS - Tamworth Branch from 9am to 12pm. Gunnedah Branch from 8:30am to 11:30am.**



## MONTHLY WINNERS

Congratulations to our New Holland Cap Winners:

S A Shorten - Nundle,  
AC & NC Henry - Walcha  
JS & FJ Clifton - Coonabarabran



This month we have 3 **NEW HOLLAND CAPS** to give away  
- simply return your payment by Friday 24th April, 2015 to go into the draw.

We would also remind customers that we accept  
Visa & MasterCard over the phone  
and Debit cards may be used at all our Branches.

All payments by these methods are included in the monthly draw.

Electronic/Internet Payments on the last day of the month cannot be allocated until the next day - it would assist us greatly if payments could be made prior to the last day of the month to allow receipting and allocation to accounts prior to Month end.....thank you.

For Customers that use Internet Banking, our bank account details are:

**Commonwealth Bank**

**BSB: 062 602 Account Number : 00 272 029**

Please use your account number, name or invoice number as a reference.



**Just to keep you up-to-date:** In the Tamworth office we have a new addition - Kym Armstrong joined the Administration team in mid February and will now be the voice that you hear when you call us at Tamworth. Kym is responsible for answering all the incoming calls, front office Reception and Accounts Receivable. She joins Jamie Rutter

(Accounts Payable) who has been at Goodwin Kenny Tamworth branch since May 2006. Jamie "knows the ropes" in the office and has been training Kym, hopefully not teaching her too many bad habits! So if you have an account inquiry or need to talk to Spare Parts, Sales or Service please call Jamie and Kym at Tamworth on 02 67655244.



Jamie Rutter and Kym Armstrong

Another new addition:-  
Levi and Chloe Alley welcomed their little baby girl into the world on 9th March 2015.

Charlotte Anne Margret Alley weighed in at 7 pound 8 ounces and was 50 cm long.

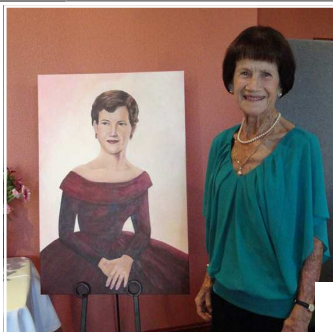
Levi has had a couple of weeks off to get acquainted with his lovely daughter, changed a few nappies, had a few sleepless nights - not too many!! - I think Charlotte already knows that Levi needs his sleep so he comes to work happy.



An 80th Birthday is a special occasion and my mum, Joy Lillyman, recently celebrated her 80th with family and friends at a dinner in Moree. For years Mum has avoided the fuss of Birthdays and I was quite surprised that she wanted a party - but I suppose when you get to 80, it is something to skite about and Mum has never looked her age and still doesn't! With my brothers, Les and Geoff, I hosted a lovely evening filled with chatter and laughter.

I wanted to do something special for Mum so I decided to paint her a Portrait. I had a couple of photos of her as a 22 year old - there were not many photos from those days. She was beautiful and with the help of my Art teacher, Maria Henry, we tried to capture that young beauty on the canvas. While painting the canvas I talked a lot about my Mum to Maria and my fellow students. Maria said you can tell a lot about a person from their facial features - she thought that my mum would be generous, yet quite determined. I discovered there are quite a few things I don't know about her, but what I do know is that I have some good memories and I know she had a very busy time raising four children, and she can now enjoy spoiling her five grandchildren and her great grandchildren. **After all, Family is so important.** For the record - like Tamworth, Moree is very dry. My uncles (Mum's brothers) and my brother, Les, are farming west of Moree and they would welcome some much needed rain, and they would certainly enjoy not having to continually feed stock. Let us hope that they get some respite soon.

*Just a reminder - we will be closed on Saturday 25th April for Anzac Day. ...Susan Goodwin*



Mum with her brothers & sisters.



Three generations - my daughter Gina, my mum Joy and myself. Below: four generations - with mum paying more attention to great-grandson, Hugo, than the camera!







**NEW HOLLAND TT75**  
75 Horsepower,  
4 cylinder, 8 Forward x 2  
Reverse Transmission, ,  
640 Hours, Tidy Tractor  
**\$23,100.00 inc GST**



**NEW HOLLAND TL100A**  
Sold new in 2006, Low Hours,  
3rd Function, Standard Bucket,  
Serviced regularly by  
Goodwin Kenny,  
Tractor is in Good Condition  
**\$55,000.00 inc GST**



**JOHN DEERE 6210SE**  
90HP, FWA, A/C CAB,  
16x16 Synchro Trans,  
Forward/Reverse shuttle,  
3pl, 2 remotes.  
**\$36,300.00 inc GST**



**NEW HOLLAND TM190**  
190HP, FWA, Cab, 18 Speed  
Powershift, Super Steer Front  
Axle, 4 Remotes, 1900 hours.  
**\$99,000.00 inc GST**



**NEW HOLLAND SUPER 417**  
Small Square Baler **\$16,000.00 inc GST**



**NEW HOLLAND  
BR740A**  
Round Baler.  
This baler has had an  
extensive overhaul.  
New belts, chains and  
sprockets as required.  
Workshop checked  
by Merv.  
**SPECIAL PRICE  
\$35,000.00 inc GST**



**NEW HOLLAND 499 - offers considered**  
Haybine Mower Conditioner

### USED New Holland Machinery Rate

**6.96% pa**

(\* effective from 1-4-2015,  
subject to change without  
notice) 12 to 60 month terms.

Tailored finance packages. No Early Termination Fees.

**Finance for USED New Holland T6030 Tractor  
(pictured) with Front End Loader – 4in1 Bucket**

**Price \$99,000.00 including GST**

**\$20,000 Deposit (20%)**

**3 year term - \$2,464.41 per month or \$569/week**

**5 year term - \$1,579.00 per month or \$365/week**

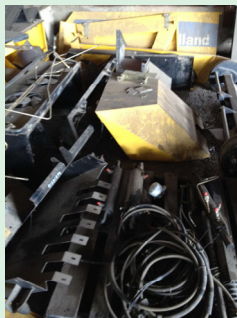
**Terms & Conditions apply,  
subject to approval by CNHi Capital**



### Looking for Parts? WRECKING AT TAMWORTH



**SIP 470 Rake**  
New Holland  
317 Small  
Square Baler  
New Holland  
BB940AP  
Big Square



### CONSIGNMENT MACHINES - TAMWORTH



**NEW HOLLAND  
FRONT WEIGHTS,**  
off TG285,  
suits T8, T8000,  
other TG's  
**\$3,000.00 inc GST  
OR OFFER**



**Tony Housden**  
**(02)**  
**6765 5244**  
246 Bridge  
Street  
**TAMWORTH**

A/Hrs: 0437 337 131

### NEW machines in Stock - TODAY



Visit: [www.goodwinkenny.com.au](http://www.goodwinkenny.com.au)

**We are the authorised dealers for:**

**AGPOINT - BARE-CO - CHALLENGE - DAVEY AFM - DAVIMAC - GREAT WESTERN TILLAGE - GYRAL - HOWARD -  
JANKE - JARRETT - JAYLOR - K-LINE - McHALE - MORRIS - NEW HOLLAND - SILVAN - JOHN SHEARER -  
SIMPLICITY AUSTRALIA - SIP - SOUTHERN CROSS AG MACHINERY - SUPERIOR - TAARUP - VICON**



# GOODWIN KENNY

Tamworth • Gunnedah • Armidale



USED EQUIPMENT  
APRIL 2015

GUNNEDAH - 02 6742 5777 A/HRS: PETER KENNY: 6742 4502 GLENN FURNER 0429 650 323



**\$55,000.00**

## CASE LBX332

Large Square Baler, 8x3x3,  
Rotor Cutter Model, Single Axle.  
Well maintained Baler.  
\$55,000.00 inc GST



**\$99,000.00**

## NEW HOLLAND BB960ARY

Large Square Baler, 4x3x8,  
Silage Version with "W" Rotor  
Cutter Feeding system.  
**SPECIAL \$99,000.00 inc GST**



**SPECIAL \$30,000.00**

## NEW HOLLAND 1432

Centre Pivot Trailed Mower  
Conditioner (Flail type conditioner),  
suit grass crops.  
**SPECIAL \$30,000.00 inc GST**



Peter  
Kenny

A/Hrs: 02 6742 4502



Glenn  
Furner

A/Hrs: 0429 650323



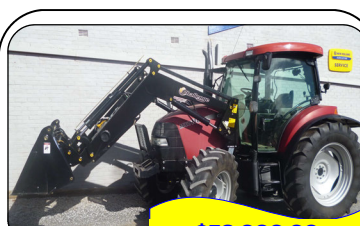
## COLLECTORS DREAM

VERSATILE 935, 330HP,  
4WD, Cab, A/C, Dual Tyres  
\$ P.O.A  
*offers considered*



## CHALLENGE BUCKET

2400mm, STD Earth,  
21 Series lugs  
\$2,500.00 inc GST



**\$79,000.00**

## CASE MXU110

116HP, FWA, Cab, 16x16 Semi  
Powershift Trans, with new  
Challenge Front End Loader and  
4 in 1 Bucket.

**SPECIAL \$79,000.00 inc GST**



**\$99,000.00**

## NEW HOLLAND TM190

190HP, FWA, Cab, 4 Remotes,  
18 speed Power Shift Transmission,  
Super Steer front axle.  
\$99,000.00 inc GST



**\$17,500.00**  
*As is - where is*

## GYRAT TG/SC PLANTER

36ft, Hydraulic Blower, 2 x 1 Ton Bins \$17,500.00 inc GST

## ARMIDALE



Keith  
McPhie

139 Miller Street  
(02) 6772 8124

## CONSIGNMENT MACHINES - ARMIDALE



## SILVAN 200 LITRE AIRBLAST SPRAYER

Never had chemical  
in it, used on organic  
grapes. Very tidy,  
only 50 hours use.

**\$3,300.00 inc GST**



## NEW HOLLAND TR70

22' open front & Comb Trailer  
Twin Rotor Combine

**\$18,000.00 inc GST**



**\$30,000.00**

## NEW HOLLAND TR85

Twin Rotor Harvester,  
H/Static Drive, 1992 with  
NH705 25' Bat Reel  
**\$30,000.00 inc GST**

## Carryalls, Drag Harrows, Slashers, Pipe Layers & Rippers



For more information about new  
SXM machines drop in or call Keith at ARMIDALE on 6772 8124



## NEW HOLLAND TR89

Twin Rotor, H/Static Drive,  
Straw Chopper, 72C 30' O/F  
Bat Reel and Comb Trailer  
**\$100,000.00 inc GST**



## NEW HOLLAND TR98

Combine Harvester with  
NH971 Bat Reel Front &  
Inverell Welding Comb Trailer  
**\$100,000.00 inc GST**

For more photos visit: [www.goodwinkenny.com.au](http://www.goodwinkenny.com.au)