



A Good News Story

On 29th March I received an email from a friend with some photos and the following story:

Susan,
I was at a friend's place on the weekend putting a sign on their cattle crate, a property called "Booroomin" on the western side of Boggabri owned by Robert and Cath Collyer. They have been suffering the dry times like everyone else. When I got there they were on the endless task of carting water to various points to keep their cattle alive, as all their dams are dry. I asked Rob about the tractor, whether he had had any trouble with it. He couldn't find enough praise for it (New Holland TS100A). He had bought it second hand 4 years ago from Goodwin Kenny in Gunnedah, and he hadn't had a single problem with it in that time. As far as he was concerned it was the best piece of equipment he had ever owned. With it he cuts, rakes, bales and sheds 1000 large round bales of hay a year, does all his fencing, general carting and watering, uses it every day to feedlot his cattle, and a host of other miscellaneous activities. While he was telling me all this I couldn't help but think what a great good news story this is for Goodwin Kenny. Rob and Cath Collyer are the most wonderful people, recently empty nesters after their son Luke (has two sisters) left to go overseas to England three weeks ago. They are the example of the salt of the Australian bush, to me anyway. Intelligent, educated, non-judgemental, hardworking, wonderful parents, a lot of fun to be around and incredibly loyal to their friends. And they never give up! And here they are, keeping the dream alive with a New Holland tractor they bought from Goodwin Kenny that has never let them down.



I telephoned Rob on 30th April, one month after the photos were taken, and asked him how things were going at Booroomin and to seek his permission to print the photos and the story. I am pleased to say that things have improved at Booroomin and Rob tells me that they have had 5 1/2 inches of rain since Easter. They have good subsoil moisture, are sowing barley and will probably sow some wheat. Rob also told me that his dams are full and cattle prices are good. What a difference a few weeks makes in the life of a farmer. He acknowledges that they were very lucky to be under some of the storms that fell around the district, as many people to the north and west have not received nearly as much rainfall. Things are greener and he is looking forward to Harvest. We also had a quick chat about his daughters, who were both at Calrossy with my daughter, Gina - it is a small world - isn't it!

We can supply your NEW or USED TRACTOR with great FINANCE!



Finance for USED
New Holland
T6030 Tractor with
Challenge L3900 Front End
Loader - 4in1 Bucket, 115 HP,
1950 hours, at Tamworth
\$99,000.00 inc GST
Used New Holland Equipment Rate
6.96% p.a. - \$20,000 Deposit (20%)

3 year term • \$2,464.41 per month or **\$569.00/week**
5 year term • \$1,579.00 per month or **\$365.00/week**



Finance for NEW
New Holland
TT4.75
with Challenge
4 in 1 Front End
Loader, 75 HP
@ 2.45%
\$15,000 Deposit
over 5 years
\$541.00/Month

Finance for USED
New Holland TL100A Tractor
with Challenge AP35 PLUS
Front End Loader,
97 HP, 2560 hours, at Tamworth
\$55,000.00 inc GST
Used New Holland Equipment
Rate 6.96% p.a. - 5 year term
\$8,250 Deposit (15%)
\$940.00 per month or
\$217.00/week



Finance for NEW
New Holland TD5.110
110 HP, (Loader can be
added as an option)
@ 2.45%
\$19,000 Deposit
over 5 years
\$697.00/Month
(Glenn not included)



Terms and Conditions Apply. Subject to approval by CNHi Capital



Built by NEW HOLLAND financed by



GOODWIN KENNY

Tractor and Farm Machinery
Dealers since 1962.

**For all your Scheduled
Services and Repair work
on New Holland, Fiat,
Ford, Case & Versatile
Tractors, Balers and
Haymaking equipment,
Silvan Sprayers and all
slashers - call our
experienced team.**

**ARC RTA AIRCONDITIONING
LICENCE AU11959**



Ken Hatton
Tamworth

Service Manager at Tamworth. Over 10 years with Goodwin Kenny. Experienced with New Holland, Fiat, Case & Ford tractors & Air Cond.



Merv Leard
Tamworth

Over 19 years with Goodwin Kenny. Specialist with New Holland Balers, mower conditioners and haymaking.



Levi Alley
Tamworth

Commenced training as Apprentice in 2005 & now has over 10 years with Goodwin Kenny. All Tractors and licenced for Air Conditioning.



Con Smit
Tamworth

Over 31 years with Goodwin Kenny. Has worked on many Fiat tractors and crawlers and is now passing on his knowledge to the others.



Nathan Keel
Tamworth

Commenced Mechanical Apprenticeship in 2014. Working with Merv to acquire knowledge of Balers & Haymaking gear.



Dave Pease
Gunnedah

Service Manager at Gunnedah Branch. Nearly 10 years with Goodwin Kenny. Works on New Holland, Case & Ford Tractors, Guidance and Air Conditioning.



Lachie McARTHUR
Gunnedah

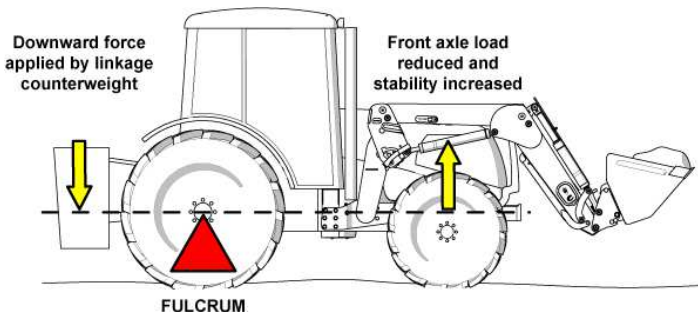
4th Year Apprentice - commenced in 2012. Has an Air Conditioning Trainee Licence.

3Point Linkage Counterweight – What is it? Why do you need it?

Serious lifting machinery has built-in counterweights – think about a Forklift, Telehandler or an Excavator – they all have a great big cast iron block built into the rear of the machine to counterbalance the weights being lifted on the front. We take a farm tractor which is designed to pull, put a front end loader on the front and then try to lift with it, while there is some weight in the rear end of the tractor it is generally insufficient.

All quality Front End Loaders list a Rated operating Load WITH a 3pl Counterweight – by hanging the weight on the linkage – it pivots over the rear axle and takes weight off the front axle as the loader tries to lift. Water in the tyres or Cast Iron weights on the rear wheels DOES NOT help, in actual fact it INCREASES the weight load on the front axle with only a small increase in stability.

By increasing the weight overhanging the rear axle the stability of the tractor increases, as the loader lifts, due to the change in the centre of gravity. The benefits are very clear – Safer and easier operation, reduced wear and stress on the front axle/tyres/steering etc.



Call us to get the correct information on how to setup your 3 Point Linkage Counterweight.

Reminder—call our Service Departments and book your tractor or baler service. Tractors should be serviced every 12 months regardless of the hours of use.

“They Still use ‘Em” by Peter Kenny

A couple of weeks ago I was travelling back from Staplegrove at Mount Parry after looking at an Air Seeder at Braefield, just the other side of Quirindi. I noticed this pile of dust and stopped to take a closer look. After going through a couple of paddocks I met Tom Judson who was “raking” his grass with his 1952 Fordson Major Diesel E1A, complete with “home made” header tank recovery bottle. The rake is a horse drawn 4 wheel Bamford, the right hand axle was broken and Tom has put two pieces of wood around it, wired the wood together and then wired the wood back to the main frame. He also has a 6 wheel rake but reckons this one does a better job. Parts are obviously a problem for some of these models - but ingenuity and creativity are in abundance.



Check the New Holland Parts Website www.newhollandparts.com.au for special offers, parts information and to view our latest catalogue on-line by

entering Tamworth or Gunnedah in “Find your local Dealer and catalogue” or call in and collect a copy (the one with local farmer, Mark Warden, on the cover).



BA
Booragul Angus

ANNUAL BULL SALE

Wednesday 27th May 2015: 1pm

50 BULLS ON SALE

Sale Location: Gunnedah NSW

Tim Vincent M: 0429 031 610 T: (02) 6744 5260 E: info@booragulangus.com.au www.booragulangus.com.au



GOODWIN KENNY

Tractor and Farm Machinery
Dealers since 1962.

**For all your Spare
Parts and great
service from our
experienced team**



David Hartmann
Tamworth

Over 6 years with
Goodwin Kenny. Over 35
years in Ag industry.
Experienced with
New Holland, Case, Ford,
John Shearer & Silvan.



Peter Mackay
Tamworth

Over 7 years with
Goodwin Kenny. Many
years in Council & Private
Business. Experienced with
New Holland, Fiat, Ford,
John Shearer & Silvan.



Shane Bridges
Tamworth

Newest member - Goodwin
Kenny team. Over 20 years
in Ag Industry.
Experienced with Case,
John Shearer, Gyril, Silvan,
Points and discs.



Mark Kenny
Gunnedah

Over 33 years with
Goodwin Kenny.
Experienced with New
Holland, Versatile, Fiat,
Simplicity, Gyril,
Connor Shea, John Shearer.



Ken Mack
Gunnedah

Over 13 years with
Goodwin Kenny experienced
with New Holland, Gyril,
John Shearer, Howard,
Morris, Silvan & Simplicity.



Keith McPhie
Armidale

Nearly 12 years with
Goodwin Kenny.
At Armidale - a wide range
of parts: Filters, Oils, Twine,
Slasher Blades, Bolts & Nuts
Points, BareCo, Silvan, SXM

***AGPOINT *BARECO *CHALLENGE
*DAVEY AFM *DAVIMAC
*GREAT WESTERN TILLAGE *GYRAL
*HOWARD *JANKE *JARRETT *JAYLOR
*MCMALE *MURRAY HARROWS
*MORRIS *NEW HOLLAND *SILVAN
*JOHN SHEARER *SIMPLICITY *SIP
*SXM *SUPERIOR *TAARUP *VICON**

246 Bridge St. **TAMWORTH**
(02) 6765 5244
42 Mullaley Rd. **GUNNEDAH**
(02) 6742 5777
139 Miller St.
ARMIDALE
(02) 6772 8124
www.goodwinkenny.com.au



**When servicing your machinery use genuine
New Holland filters, grease, fan-belts and oils.**

**STOCK UP WITH THE BEST
LUBRICANTS AND GET AN
ENGINE OIL FILTER FREE**

Buy 2 x 20L Drums before 30 June 2015 to receive
your FREE New Holland genuine engine oil filter.



Offer available at participating
dealers only and while
stocks last.

AMBRA FOR MORE INFO VISIT
NEWHOLLANDPARTS.COM.AU



**SILVAN 12V
HIGH PRESSURE
SMOOTHFLO PUMP**



**Constant Flow Technology
NO PULSATION**

\$329.00 Inc GST DDP-554

**SILVAN 15L CHAPIN
PISTON KNAPSACK**

*Professional sprayer
for weed & pest control
or liquid fertilising.*

- Superior anti-spill lid
- 3 stage filtration
- Viton seals



\$179.00 Inc GST
CP-61800

**16L RECHARGEABLE
BACKPACK SPRAYER**

- Rechargeable 12V battery
- Approx. 4hr continuous run time with on-demand pump
- 2 speed pump, 2.6L/min or max 40psi.



\$239.00 Inc GST
WP16-1



**Agpoint Following
Harrows**



HA3x3FH...\$161.62 HA3x5FH...\$261.02
HA4x3FH...\$219.53 HA4x5FH...\$340.53



**Murray 8020 Stump
Jump
Harrow**



4 Wide x 5 Deep...\$537.90

Prices Inc GST



**DON'T BE CAUGHT OUT
WITH A FLAT BATTERY!**

Spare Parts have a range of
genuine New Holland Exide Batteries
for your tractors and machinery.



These batteries are **AUSTRALIAN MADE.**



**Great
Western
Tillage**

SCARIFIER AND TILLAGE POINTS

SCARIFIER

Part No SC20006

Size/Desc 6"

Price \$8.49

POINTS

Part No SC20007

Size/Desc 7"

Price \$8.84



Part No SC20008

Size/Desc 8"

Price \$10.30

Part No SC20009

Size/Desc 9"

Price \$12.94

Part No SC20010

Size/Desc 10"

Price \$15.55

CHISEL

Part No RC00350-16

Size/Desc Reversible

Price \$31.43

POINTS

Part No RC00350-22

Size/Desc Reversible

Price \$35.48

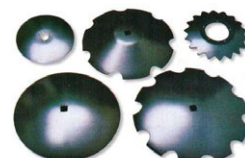
Part No JSL3920-88

Size/Desc Reversible

Price \$65.78

**POINTS AND DISCS
IN STOCK**

Scarifier, Trashworker
and Combine Points,
also Discs to suit:
Case, Chamberlain,
Connor Shea, Davimac,
Gyril, Jarrett, IH,
John Shearer, Massey &
other tillage machines.



OPEN SATURDAY MORNINGS - Tamworth Branch from 9am to 12pm. Gunnedah Branch from 8:30am to 11:30am.

MONTHLY WINNERS

Congratulations to our New Holland Cap Winners:

B & V Wilson - Tamworth,
RJ & JR Fouracre - Tambar Springs
M Rose - Woolomin

This month we have 3 **NEW HOLLAND Beanies** to give away - simply return your payment by Wednesday 27th May, 2015 to go into the draw.

We would also remind customers that we accept Visa & MasterCard over the phone and Debit cards may be used at all our Branches.

All payments by these methods are included in the monthly draw.

Electronic/Internet Payments on the last day of the month cannot be allocated until the next day - it would assist us greatly if payments could be made prior to the last day of the month to allow receipting and allocation to accounts prior to Month end.....thank you.

For Customers that use Internet Banking, our bank account details are:

Commonwealth Bank

BSB: 062 602 Account Number : 00 272 029

Please use your account number, name or invoice number as a reference.



WEAN PICNIC RACES

SATURDAY 4TH JULY 2015

1915

Join us for an historical theme day as we remember 1915 and the **THE GREAT WAR**

He Launched a Nation...

She Launched The Modern Woman...

COME RACE WITH US, & REMEMBER THEM!!

Dress code: Gentlemen - WW1 soldiers uniform of any participating nation.
Ladies - A uniform or Costume from any of the roles that women performed during WW1, including the home front as well as the battle zone.
For those who don't wish to costume: Colour theme red and white.

For more info go to: www.weanraces.com.au

2015 Beneficiary



Tony Housden will be riding in the Westpac Outback Mountain Bike Ride from Cameron Corner - Tamworth (1500km trip). Any donations to the Westpac Rescue Helicopter Service can be made by calling Tony on 0437 337131.

Tony will be away for 3 weeks from 19th May so if you would like to talk to Tony about Machinery or New Holland Finance please call him asap.



Currabubula Red Cross Art Show
The 52nd Currabubula Red Cross Art Show and Sale will be held in the Currabubula War Memorial Hall from **21- 24 May 2015.**
Opening Night will be Thursday 21st May from 5pm to 9pm.
Everybody is welcome - Refreshments are provided.
Cost \$20pp includes catalogue.
Prize winners will be announced at 7pm.

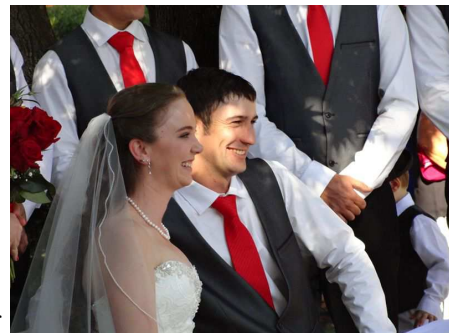
The Art Show will be open
Friday 22nd May: 10am to 5pm
Saturday 23rd May: 10am to 5pm
Sunday 24th May: 10am to 4pm

Just to keep you up-to-date:

In the week leading up to their "big day" on Saturday 11th April I am sure Nathan Keel & Andrea Kidd might have had some concerns about the weather as we experienced some very cold, windy and damp days. As it turns out Saturday could not have been a better day - about 26 degrees for their picturesque Wedding ceremony in Anzac Park followed by their fun filled Reception in a beautifully decorated Marquee at Andrea's parents property.

Nathan is the son of Wayne and Glenda Keel, Manilla and Andrea is the daughter of Andrew and Kerrie Kidd of Tamworth. Nathan and Andrea spent two weeks away on their Honeymoon and Nathan has now returned to work at Goodwin Kenny - Tamworth Branch.

The BOM predicted good rainfall on Sunday 19th April and we didn't quite get all that was promised, however the weather did make the organisers of **The Long Lunch** change the venue for this year's feast and the new venue proved an inspired choice. The AELEC Sale Ring provided an interesting venue with the long tables set up on the top deck, with great views of the surrounding area and the storm clouds. The food, beverages, company and entertainment did not disappoint and lived up to the expectations of the diners. The Show of Horsemanship in the Sale Ring was an added bonus and for many who had not previously been to AELEC it gave them a "taste" of some of the shows that feature at AELEC (Australian Equine and Livestock Events Centre) during the year.



Loomberah Biggest Morning Tea - Thursday 28th May at 10.00 am in the Loomberah Hall.

Raffles, Guessing Competitions, Trading Table of plants and country cooking.

Guest Speakers Cathy and Anna Lisle of Walcha who have cooked on "My Kitchen Rules" will share their journey with us.

RSVP janelletongue@gmail.com or 0428421206 by 21st May.

It has been a custom for many years for my daughter and I, and friends with daughters to go to the Currabubula Art Show on Mothers Day - this year that will not happen as the Committee has had to move the date to two weeks later starting on 21st May. So this year it will quite different for Mothers Day, whatever you are doing I hope all the Mums have a pleasant day, and put **the new date in your Diary for Currabubula Art Show (see times above).** ..Susan Goodwin

Mother noun. A person with the ability to detect a lie, hear the smallest noises, and see out the back of their head.



NEW HOLLAND TL100A
97 HP, 2006, 2565 Hours,
Challenge AP35 Plus FEL, 3rd
Function, 2160 mm Standard
Bucket, Good condition,
Serviced by Goodwin Kenny,
\$55,000.00 inc GST



NEW HOLLAND T6030
115 HP, 6 Cylinder, Common
Rail, Range Command Semi
Powershift, 19 Forward x
6 Reverse Gears, Challenge
L3900 FEL .With 4-in-1 bucket
**\$99,000.00 inc GST... Standard
bucket \$95,000.00 inc GST**



JOHN DEERE 6210SE
90HP, FWA, A/C CAB,
16x16 Synchro Trans,
Forward/Reverse shuttle,
3pl, 2 remotes.
\$36,300.00 inc GST



NEW HOLLAND TM190
190HP, FWA, Cab, 18 Speed
Powershift, Super Steer Front
Axle, 4 Remotes, 1900 hours.

\$99,000.00 inc GST



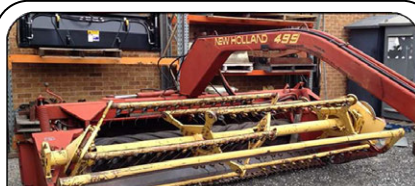
NEW HOLLAND BR740A

Round Baler.
This baler has had an
extensive overhaul.
New belts, chains and
sprockets as required.
Workshop checked by
Merv.

SPECIAL PRICE
\$35,000.00 inc GST



NEW HOLLAND SUPER 417
Small Square Baler **\$16,000.00 inc GST**



NEW HOLLAND 499 - offers considered
Haybine Mower Conditioner

CONSIGNMENT MACHINES - TAMWORTH

SPRAYRITE CAMPO 3200

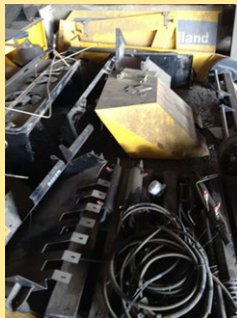
Trimble Field IQ
controller ready to
plug into FM750
guidance unit. Full
hydraulics, electric
over hydraulic
controls for all
boom functions,
high lift & folds forward for storage/transport. Electric
controlled Fence-line nozzles. Full fluid control panel, flush
tank, chemical mix tank, full filter system, 250lt/minute PTO
drive Diaphragm pump. Manoeuvrable-trailer hitch being
behind pump & rearward of Tractor wheels. Full electric
controls, 5 section, rate control. Sprayed only approx. 250ha.
\$49,500.00 inc GST



Looking for Parts? WRECKING AT TAMWORTH



SIP 470 Rake
New Holland
317 Small
Square Baler
New Holland
BB940AP
Big Square



Tony Housden
(02)
6765 5244
246 Bridge
Street
TAMWORTH

A/Hrs: 0437 337 131

CONSIGNMENT MACHINES - TAMWORTH



**NEW HOLLAND
FRONT
WEIGHTS,**
off TG285,
suits T8, T8000,
other TG's
\$3,000.00 inc GST

NEW machines in Stock - TODAY



Silvan



Challenge
implements



Visit: www.goodwinkenny.com.au

We are the authorised dealers for:

**AGPOINT - BARE-CO - CHALLENGE - DAVEY AFM - DAVIMAC - GREAT WESTERN TILLAGE - GYRAL - HOWARD -
JANKE - JARRETT - JAYLOR - K-LINE - McHALE - MORRIS - NEW HOLLAND - SILVAN - JOHN SHEARER -
SIMPLICITY AUSTRALIA - SIP - SOUTHERN CROSS AG MACHINERY - SUPERIOR - TAARUP - VICON**

GOODWIN KENNY

Tamworth • Gunnedah • Armidale



USED EQUIPMENT
MAY 2015

GUNNEDAH - 02 6742 5777 A/HRS: PETER KENNY: 6742 4502 GLENN FURNER 0429 650 323



\$55,000.00

CASE LBX332

Large Square Baler, 8x3x3,
Rotor Cutter Model, Single Axle.
Well maintained Baler.
\$55,000.00 inc GST



\$99,000.00

NEW HOLLAND BB960ARY

Large Square Baler, 4x3x8,
Silage Version with "W" Rotor
Cutter Feeding system.
SPECIAL \$99,000.00 inc GST



\$30,000.00

NEW HOLLAND 1432

Centre Pivot Trailed Mower
Conditioner (Flail type conditioner),
suit grass crops.
SPECIAL \$30,000.00 inc GST



Peter
Kenny

A/Hrs: 02 6742 4502



Glenn
Furner

A/Hrs: 0429 650323



\$79,000.00

CASE MXU110

116HP, FWA, Cab, 16x16 Semi
Powershift Trans, with new
Challenge Front End Loader and
4 in 1 Bucket.

SPECIAL \$79,000.00 inc GST



\$99,000.00

NEW HOLLAND TM190

190HP, FWA, Cab, 4 Remotes,
18 speed Power Shift Transmission,
Super Steer front axle.
\$99,000.00 inc GST



COLLECTORS DREAM

VERSATILE 935, 330HP,
4WD, Cab, A/C, Dual Tyres
\$ P.O.A
offers considered

CHALLENGE BUCKET

2400mm, STD Earth,
21 Series lugs
\$2,500.00 inc GST



NEW HOLLAND TR70

22' open front & Comb Trailer
Twin Rotor Combine
\$18,000.00 inc GST



\$30,000.00

NEW HOLLAND TR85

Twin Rotor Harvester,
H/Static Drive, 1992 with
NH705 25' Bat Reel
\$30,000.00 inc GST



\$17,500.00
As is - where is

GYRAL TG/SC PLANTER

36ft, Hydraulic Blower, 2 x 1 Ton Bins **\$17,500.00 inc GST**

CONSIGNMENT MACHINES - ARMIDALE



SILVAN 200 LITRE AIRBLAST SPRAYER

Never had chemical
in it, used on organic
grapes. Very tidy,
only 50 hours use.
\$3,300.00 inc GST

ARMIDALE



Keith
McPhie

139 Miller Street
(02) 6772 8124



NEW HOLLAND TR89

Twin Rotor, H/Static Drive,
Straw Chopper, 72C 30' O/F
Bat Reel and Comb Trailer
\$100,000.00 inc GST



NEW HOLLAND TR98

Combine Harvester with
NH971 Bat Reel Front &
Inverell Welding Comb Trailer
\$100,000.00 inc GST

Carryalls, Drag Harrows,
Slashers, Pipe Layers & Rippers

**SX SOUTHERN CROSS
AG MACHINERY**



For more information about new

SXM machines drop in or call Keith at ARMIDALE on 6772 8124

For more photos visit: www.goodwinkenny.com.au