



NEW HOLLAND T7.200 TO QUAMBONE

With the acquisition of more property around the district, Graham and Kay Warren of Warren Rural Pty Ltd at Quambone had the need for a tractor to reduce the travel time moving a utility tractor between their properties. The New Holland T7.200 Auto Command was chosen as it is the closest in specification to another brand machine on the farm.

By having similar machines, operators can move between tractors with ease, maintaining productivity and safety.

The New Holland T7.200 has been fitted with a Challenge L4200 Front End Loader to carry out hay handling, water trough repairs and light timber clean-up. The Auto Command CVT transmission makes general operations and loader work very easy and efficient.

Pictured at the delivery installation and start up at Quambone are Tony Housden (Goodwin Kenny Salesman), Kodey Sinclair & Gina Goodwin (Warren Rural) and Levi Alley (Goodwin Kenny Service Technician).



LOOKING FOR PARTS AND ORDERED A TRACTOR !!

David Scott of Purlawaugh called into our Gunnedah branch to source some John Shearer parts and spied the Used Case MXU110 on display. After talking with Glenn Furner, our Gunnedah Salesman, David discussed some options for a new tractor and settled on a new New Holland T6070 LS fitted with a Challenge AP38 Plus front end loader and 4 in 1 bucket. The 16x16 Electro Command transmission with Clutchless shuttle will be used for general farming duties as well as fencing when required.

Pictured at delivery installation and start up is David Scott.

To book your New Holland T7.200 demonstration or "test drive"

- call Glenn Furner or Peter Kenny at Gunnedah on 67425777 or Tony Housden at Tamworth on 67655244

Goodwin Kenny will be performing a series of "on farm" demonstrations leading up to and following Agquip 2015. Our demonstration tractor will be a New Holland T7.200 Standard Wheel Base with the following features:

- 50kph Auto Command (CVT) Transmission
- Front Terraglide Suspension
- 6.7 litre Engine, Common Rail Injection
- 155 Rated Engine Horsepower (Max Power 171 HP)
- 140 PTO HP, 540/540E(750)/1000 RPM PTO Speeds
- 4 Electro/Hydraulic Remote Control Valves
- High visibility Cab with Suspension
- Sidewinder II Armrest with Intelliview III Display
- Terralock Traction Management
- Headland Turning Sequence
- 580/70 R38 Rear tyres
- Cat 2/3 Three Point Linkage



NEW HOLLAND TRACTORS and BALERS in STOCK



BE QUICK—LIMITED STOCK New Holland BC5060 Small Square Baler with Hydraulic Swing Kit \$44,880.00 inc GST \$8,000 Deposit - \$255 per week over 3 years with Monthly payments

T4.95 Dual Command tractor with Challenge AP35 FEL with 4in1 bucket - \$84,260 including GST Finance @ 1.45% pa - 30% Deposit, \$1461/month=\$387/wk

TT4.75 tractor with Challenge AP32 Plus FEL with 4in1 bucket - \$47,300.00 inc GST Finance @ 1.45% pa - 30% Deposit, \$830/month=\$219/wk

T6020 PLUS tractor with Challenge AP38 FEL with 4in1 bucket - \$105,820 inc GST (arriving soon in Gunnedah) Finance @ 1.45% pa - 30% Deposit, \$1848/month=\$489/wk
All finance subject to approval. Terms & Conditions Apply



Built by NEW HOLLAND financed by



GOODWIN KENNY

Tractor and Farm Machinery
Dealers since 1962.

**For all your Scheduled
Services and Repair work
on New Holland, Fiat, Ford,
Case & Versatile Tractors,
Balers and
Haymaking equipment,
Silvan Sprayers and all
slashers - call our
experienced team.**

**ARC RTA AIRCONDITIONING
LICENCE AU11959**



Ken Hatton
Tamworth

Service Manager at
Tamworth. Over 10 years
with Goodwin Kenny.
Experienced with New
Holland, Fiat, Case &
Ford tractors & Air Cond.



Merv Leard
Tamworth

Over 19 years with
Goodwin Kenny.
Specialist with
New Holland Balers,
mower conditioners and
haymaking.



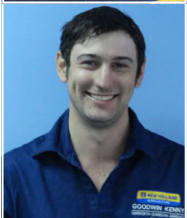
Levi Alley
Tamworth

Commenced training as
Apprentice in 2005 &
now has over 10 years
with Goodwin Kenny.
All Tractors and licenced
for Air Conditioning.



Con Smit
Tamworth

Over 31 years with
Goodwin Kenny. Has
worked on many Fiat
tractors and crawlers and
is now passing on his
knowledge to the others.



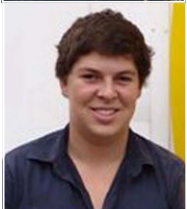
Nathan Keel
Tamworth

Commenced Mechanical
Apprenticeship in 2014.
Working with Merv to
acquire knowledge of
Balers & Haymaking gear.



Dave Pease
Gunnedah

Service Manager at
Gunnedah Branch. Nearly
10 years with Goodwin
Kenny. Works on New
Holland, Case & Ford
Tractors, Guidance and
Air Conditioning.



Lachie McARTHUR
Gunnedah

4th Year Apprentice -
commenced in 2012.
Has an Air Conditioning
Trainee Licence.

Keith Mutton was looking for a utility sprayer to tidy up some areas around his farm at Piallaway and also give him the ability to spray some smaller paddocks that do not warrant setting up the larger trailed sprayer. Keith has chosen a Silvan 800 litre Pasturepak with 8m Field boom and hose reel with spot spray gun. For spray accuracy Keith has also chosen a New Holland Ezy Guide 250 GPS light bar guidance system that has more accuracy and flexibility of use than a foam marker - it's also cheaper than a double sided foam marker. Pictured at delivery is Keith Mutton.



Tim Vincent (pictured at left) of Booragul Angus at Piallaway decided that having a rock bucket on hand would give he and his father, Jim, the opportunity to clean up isolated small areas of rock as they had time and also run along after the rock windrower to clean up a few areas of their property. After looking at a number of buckets Tim ordered an S.Houle 2400mm rock bucket based on his experience with a neighbour's bucket. This bucket (Made in Canada) has Cast steel 'teeth/points' welded to 35mm rod making the bucket very robust.

Post Hole Diggers – most of us have used them, and at the moment there is a far bit of fencing going on with some moisture in the ground and people restocking and needing to repair fences. While we have all heard of people being injured and killed by Post Hole Diggers, so often we see farmers using them in a dangerous and unsafe manner.

Some basic Post Hole Digger operating tips – PTO Shaft safety cover – CHECK IT, make sure it is operating correctly, PTO Shaft clutch (if fitted) Dismantle, clean the rust off the clutch plates – reassemble and adjust according to the operators manual, make sure the auger can dig – if hard try some water in the hole or replace the digging teeth if needed.

Safety – do not work around the Post Hole Digger with anything loose - hair, clothing, belt or gloves. Do not go under the Machine near the PTO shaft while spinning.

A recent ABC TV episode of Australian Story highlighted the amazing resilience of a young couple in Queensland after the young lady lost one arm and the use of the other when her glove got caught in the Post Hole Digger - it is worthwhile viewing the link below to realise the impact a Post Hole Digger can have .

<http://www.abc.net.au/news/2015-06-15/bush-couples-secrets-to-a-happy-marriage/6538886>

ACCIDENTS DO HAPPEN WITH POST HOLE DIGGERS – hydraulic drive units eliminate the PTO Shaft and can reduce the risk of injury enormously.

**Call us today for information on new DIGGA Post Hole Diggers or
safety checks and repairs on your old machines.**

Are you eligible for the \$20,000.00 Small Business Tax Break?

WRITE OFF EQUIPMENT PURCHASES UP TO \$20,000.00

With the recently announced Federal Budget - small businesses (with a turnover under \$2 million) can claim a full tax deduction for business assets under \$20,000.00



*Regardless of hours
worked, your tractor
should be serviced
every 12 months*
**SAVE 10%
On Filters, Oils,
Belts, Labour &
Travel in JULY**

**Now is the time to get your tractor or
baler serviced - Contact:
Ken Hatton at Tamworth on 6765 5244
David Pease at Gunnedah on 6742 5777**

**Secure your fuel
with Lockable
Fuel Caps**

For your tractor
Part no 87679916
Lockable Fuel Cap
\$76.78 inc GST
Part no 5170782 Key \$ 4.57 inc GST
(Ask our Spare Parts team which cap
suits your tractor)



**NEW HOLLAND
AGRICULTURE**

**For your Silvan
Dieselpak**
Part no 06792504
Lockable Cap
\$57.00 inc GST





Silvan Selecta Spray Guns - *It's time to get the weeds!!!!*



Triam 44

\$182.00 inc GST
Part No: 410-11



Short

\$81.00 inc GST
Part No: 411-25



Turbo

\$203.00 inc GST
Part No: 411-22



Long

\$83.00 inc GST
Part No: 411-26



"Reel Tuff" Hose Reel



The REEL TUFF 12 Volt Heavy Duty Galvanised Remote Retractable Hose Reel is Australian Made and designed for the Agricultural, Industrial and Commercial Industries. The REEL TUFF Reel is suitable for fitment to Skids or TPL Sprayers for convenient chemical spraying.

*100 Metre Hose with Silvan Turbo 400 Gun included.

Part No: 147R10012T **\$4,169.00 inc GST**



New Holland FM 1000 DGPS Display/Receiver



Hurry - One Only At This Price

Special Price \$9,500.00 inc GST

At Gunnedah Part No: ZTN93000-20-00

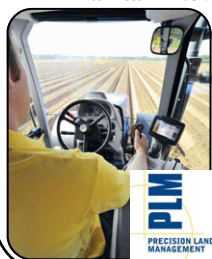


When servicing your machinery use genuine New Holland filters, grease, fan-belts and oils.



New Holland Guidance

- 2 years warranty (unlike our competitors at 12 months)
- Goodwin Kenny sells, installs & can maintain New Holland Guidance



Contact Mark Kenny at Gunnedah & Tony Housden or David Hartmann at Tamworth



DON'T BE CAUGHT OUT WITH A FLAT BATTERY!

Spare Parts have a range of genuine New Holland Exide Batteries for your tractors & machinery.



These Batteries are Australian Made



New Holland Completion Kit for Intellisteer

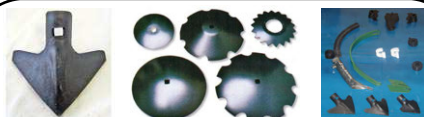
Navigation Controller II & NH372 GPS Receiver, suits T7 (Sidewinder II Armrest), T8,T9, CX & CR models.



Hurry - One Only At This Price

Special Price \$9,900.00 inc GST

At Tamworth



POINTS AND DISCS IN STOCK

Scarifier, Trashworker and Combine Points & Discs to suit Case, Chamberlain, Connor Shea, Davimac, Gyrat, Jarrett, IH, John Shearer, Massey & other tillage machines.



GOODWIN KENNY

Tractor and Farm Machinery Dealers since 1962.

For all your Spare Parts and great service from our experienced team



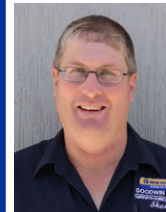
David Hartmann
Tamworth

Over 7 years with Goodwin Kenny. Over 35 years in Ag industry. Experienced with New Holland, Case, Ford, John Shearer & Silvan.



Peter Mackay
Tamworth

Over 7 years with Goodwin Kenny. Many years in Council & Private Business. Experienced with New Holland, Fiat, Ford, John Shearer & Silvan.



Shane Bridges
Tamworth

Newest member - Goodwin Kenny team. Over 20 years in Ag Industry. Experienced with Case, John Shearer, Gyrat, Silvan, Points and discs.



Mark Kenny
Gunnedah

Over 33 years with Goodwin Kenny. Experienced with New Holland, Versatile, Fiat, Simplicity, Gyrat, Connor Shea, John Shearer.



Ken Mack
Gunnedah

Over 13 years with Goodwin Kenny experienced with New Holland, Gyrat, John Shearer, Howard, Morris, Silvan & Simplicity.



Keith McPhie
Armidale

Over 12 years with Goodwin Kenny. At Armidale - a wide range of parts: Filters, Oils, Twine, Slasher Blades, Bolts & Nuts, Points, BareCo, Silvan, SXM

***AGPOINT *BARECO *CHALLENGE *DAVEY AFM *DAVIMAC *GREAT WESTERN TILLAGE *GYRAL *HOWARD *JANKE *JARRETT *JAYLOR *McHALE *MURRAY HARROWS *MORRIS *NEW HOLLAND *SILVAN *JOHN SHEARER *SIMPLICITY *SIP *SXM *SUPERIOR *TAARUP *VICON**

246 Bridge St. **TAMWORTH**

(02) 6765 5244

42 Mullaley Rd. **GUNNEDAH**

(02) 6742 5777

139 Miller St.

ARMIDALE

(02) 6772 8124



www.goodwinkenny.com.au

OPEN SATURDAY MORNINGS - Tamworth Branch from 9am to 12pm. Gunnedah Branch from 8:30am to 11:30am.

MONTHLY WINNERS

Congratulations to our New Holland Beanie Winners:

NKG Pastoral - Boggabri
LJ & JL Lush - Gunnedah
M Radford - Winton



This month we have 3

NEW HOLLAND Beanies

to give away - simply return your payment by Thursday 25th June, 2015 to go into the draw.

We would also remind customers that we accept Visa & MasterCard over the phone & Debit cards may be used at all our Branches.

All payments by these methods are Included in the monthly draw.

Electronic/Internet Payments on the last day of the month cannot be allocated until the next day - it would assist us greatly if payments could be made prior to the last day of the month to allow receipting and allocation to accounts prior to Month end.....thank you.

For Customers that use Internet Banking, our bank account details are:

**Commonwealth Bank BSB: 062 602
Account Number 00 272 029**

Please use your account number, name or invoice number as a reference.

Just to keep you up to date:

NSW RURAL FIRE SERVICE MEDALS

On Friday 12th June 2015 32 local volunteers were honoured at the Annual Awards Dinner with Commissioner Shane Fitzsimmons presenting 32 medals for Long Service and 3 National Medals. The volunteers had racked up 792 years of service between them. Among the recipients were

Merv Leard (our hay technician) who has notched up 21 years of service along with his wife, Bronwyn, who has 17 years Service and their daughter, Leah, who has recorded 10 years service (pictured middle row, far right). Other recipients (that we are aware of) were Geoff Tongue - 50 Year Service Medal (51 years), Geoff's son Cameron - 20 Year Service Medal (20 years), Richard Cheetham - 20 Year Service Medal (28 years), Graeme Whitten - 40 Year Service Medal (40 years) and National Medal, Allan Moss - 40 Year Service Medal (49 years). ***Our congratulations and gratitude to all the volunteers.***

Joke for the month...a STUDENT WHO OBTAINED 0% IN AN EXAM

(I would have given him 100%! Each answer is absolutely grammatically correct, and funny too. The teacher had no sense of humour.)

- Q1.. In which battle did Napoleon die? * *his last battle*
- Q2.. Where was the Declaration of Independence signed? * *at the bottom of the page*
- Q3.. River Ravi flows in which state? * *liquid*
- Q4.. What is the main reason for divorce? * *marriage*
- Q5.. What is the main reason for failure? * *exams*
- Q6.. What can you never eat for breakfast? * *Lunch & dinner*
- Q7.. What looks like half an apple? * *The other half*
- Q8.. If you throw a red stone into the blue sea what it will become? * *Wet*
- Q9.. How can a man go eight days without sleeping? * *No problem, he sleeps at night*
- Q10.. How can you lift an elephant with one hand? * *You will never find an elephant that has one hand*
- Q11.. If you had three apples and four oranges in one hand and four apples and three oranges in other hand, what would you have? * *Very large hands*
- Q12.. If it took eight men ten hours to build a wall, how long would it take four men to build it? * *No time at all, the wall is already built*
- Q13.. How can you drop a raw egg onto a concrete floor without cracking it? * *Any way you want, concrete floors are very hard to crack*

Spread some laughter, share the cheer. Let's be happy, while we're here!

Our New Holland Parts Catalogue for July - September has now been printed. Collect a copy from any of the branches or view on-line via the New Holland Parts website www.newhollandparts.com.au and search for a dealer by postcode 2340 or 2380.



Frost over Barraba Arts Festival was held on Thursday 25th June and concluded on Sunday 28th June. Some friends and I had a very pleasant day out at Barraba on Sunday with some shopping, lunch, arts and crafts and of course, the Art exhibition - it was worth the drive with fellow painters Kate Cullen receiving a Highly Commended in the Novice Section, Cath Neill (pictured at left) selling her first painting and Elaine Abberfield selling all her entered pottery.

For Art lovers the **Inspirational Art Exhibition** will be held upstairs at Inspirations Gift and Patchwork Gallery from Opening Night at 6.30 on Friday 10th July to Thursday 16th July. Paintings will be for sale and proceeds will aid Blue Angel Foundation. Call Leonie at Inspirations on 6766 6800 for more information or to book for Opening Night.

This month's words of wisdoms are for the husbands out there!

...Susan Goodwin

**NEVER LAUGH AT
YOUR
WIFE'S CHOICES.
YOU'RE ONE
OF THEM.**

GOODWIN KENNY

Tamworth • Gunnedah • Armidale



USED EQUIPMENT
JULY 2015



NEW HOLLAND T6030
115 HP, 6 Cylinder, Common Rail, Range Command Semi Powershift, 19 Forward x 6 Reverse Gears, Challenge L3900 FEL. With 4 in 1 bucket
\$99,000.00 inc GST... Standard bucket **\$95,000.00 inc GST**



NEW HOLLAND TM190
190HP, FWA, Cab, 18 Speed Powershift, Super Steer Front Axle, 4 Remotes, 1900 hours.

\$99,000.00 inc GST



JOHN DEERE 6210SE
90HP, FWA, A/C CAB, 16x16 Synchro Trans, Forward/Reverse shuttle, 3pl, 2 remotes.

\$36,300.00 inc GST



NEW HOLLAND BR740A
Round Baler.

This baler has had an extensive overhaul. New belts, chains & sprockets as required.

Workshop checked by Merv

SPECIAL \$35,000.00 inc GST



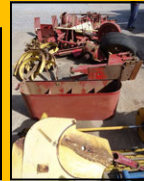
NEW - Machines In Stock



Challenge Implements

Looking for Parts?
WRECKING AT TAMWORTH

SIP 470 Rake
New Holland 317 Small Square Baler
New Holland BB940AP
Big Square Baler



Tony Housden
(02) 6765 5244



246 Bridge Street
TAMWORTH
A/Hrs:
0437 337 131

CONSIGNMENT MACHINES TAMWORTH

NEW HOLLAND FRONT WEIGHT
off TG285, suits T8, T8000, other TG's

\$3,000.00 inc GST OR OFFER



SPRAYRITE CAMPO 3200

Trimble Field IQ controller ready to plug into FM750 guidance unit. Full hydraulics, electric over hydraulic controls for all boom functions, high lift & folds forward for storage/transport. Sprayed approx. 250ha.

\$49,500.00 inc GST



On display at Armidale

CASE MXU110
116HP, FWA, Cab, 16x16 Semi Powershift Transmission, with new Challenge Front End Loader and 4 in 1 Bucket.

SPECIAL \$79,000.00 inc GST

NEW - Machine In Stock



NEW HOLLAND TT4.75
The latest utility tractor in the TT range – now with new Forward/Reverse shuttle, new flat floor, plus much more.

\$47,300.00 inc GST
Stock Unit Only

CONSIGNMENT MACHINES ARMIDALE

SILVAN 200 LITRE AIRBLAST SPRAYER
Never had chemical in it, used on organic grapes. Very tidy, only 50 hours use.

\$3,300.00 inc GST



Keith McPhie
(02) 6772 8124



139 Miller Street
ARMIDALE

SX SOUTHERN CROSS AG MACHINERY

Carryalls, Drag Harrows, Slashers, Pipe Layers & Rippers



Call for more information on new SXM machines

We are the authorised dealers for:

AGPOINT - BARE-CO - CHALLENGE - DAVEY AFM - DAVIMAC - GREAT WESTERN TILLAGE - GYRAL - HOWARD - JANKE - JARRETT - JAYLOR - K-LINE - McHALE - MORRIS - NEW HOLLAND - SILVAN - JOHN SHEARER - SIMPLICITY AUSTRALIA - SIP - SOUTHERN CROSS AG MACHINERY - SUPERIOR - TAARUP - VICON

GOODWIN KENNY

Tamworth • Gunnedah • Armidale



USED EQUIPMENT
JULY 2015

GUNNEDAH - 02 6742 5777 A/HRS: PETER KENNY: 6742 4502 GLENN FURNER 0429 650 323



NEW HOLLAND 1432
Centre Pivot Trailed Mower
Conditioner (Flail type conditioner)
Suit grass crops.

SPECIAL \$30,000.00 inc GST



CASE LBX332
Large Square Baler, 8x3x3,
Rotor Cutter Model, Single Axle.
Well maintained Baler.

\$55,000.00 inc GST



NEW HOLLAND BB960ARY
Large Square Baler, 4x3x8,
Silage Version with "W" Rotor
Cutter Feeding system.

SPECIAL \$99,000.00 inc GST



NEW HOLLAND TM190
190HP, FWA, Cab, 4 Remotes,
18 speed Power Shift Trans,
Super Steer front axle.

\$99,000.00 inc GST



NEW HOLLAND TR70
22' open front & Comb Trailer
Twin Rotor Combine

\$18,000.00 inc GST



NEW HOLLAND TR85
Twin Rotor Harvester,
H/Static Drive, 1992 with
NH705 25' Bat Reel

\$30,000.00 inc GST



NEW HOLLAND TR89
Twin Rotor, H/Static Drive,
Straw Chopper, 72C 30' O/F
Bat Reel and Comb Trailer

\$100,000.00 inc GST



NEW HOLLAND TR98
Combine Harvester with
NH971 Bat Reel Front &
Inverell Welding Comb Trailer

\$100,000.00 inc GST



UNDER OFFER

COLLECTORS DREAM

VERSATILE 935, 330HP, 4WD,
Cab, A/C, Dual Tyres
\$ P.O.A - *offers considered*



Peter Kenny
A/Hrs: 02 6742 4502



Glenn Furner
A/Hrs 0429 650323

42 Mullaley Road **GUNNEDAH**



GYRAL TG/SC PLANTER
36ft, Hydraulic Blower, 2 x 1 Ton Bins

\$17,500.00 inc GST

*As is -
where is*



**CHALLENGE
BUCKET**
2400mm, STD Earth,
21 Series lugs

**\$2,500.00
inc GST**

For more photos visit: www.goodwinkenny.com.au

NEW - Machines In Stock



Silvan

taarup



HOWARD
A tradition
of excellence.