



Australian Grain Technologies from Narrabri took delivery of a new New Holland T6.140 Auto Command Tractor and traded their New Holland TD70D 2WD tractor. Kieran Shephard was looking for a machine that could handle the plant breeders trial plots and be comfortable spraying. AGT conduct up to 50,000 plots growing some 30,000 plants annually to try and produce a better variety of wheat in yield potential and disease tolerance. The Auto Command constantly variable transmission was selected for its infinite speed capabilities and with "best in class" hydraulics and lift capacity the New Holland T6.140 made the perfect choice. The machine was fitted with a New Holland AP38 Plus Front End Loader and also has a New Holland FM1000 Guidance System fitted with 2.5cm accuracy. Pictured at the delivery installation are Kieran Shephard, Operator and Tom Kapcejevs, Manager.



Gunnedah Hire Service - Rod and Jo Wattenhall from Gunnedah Hire Service recently took advantage of the Government's \$20,000.00 Small Business Tax Break and decided to update some of their equipment. They purchased a new New Holland TT4.75 ROPS tractor, a Howard HD180 Slasher and a Silvan 400 litre Econopak Linkage Sprayer for hiring out to their local customers. The tractor replaced a Fiat 566 tractor that has seen four previous owners of the business come and go.

Kootingal farmer **John Hicks** was looking to update his linkage boomspray after many years of use. John has chosen a Silvan 800 litre Pasturepak with a 10 metre boom for paddock spraying. A hose reel and spot spray gun have also been fitted so he can clean up corner areas of paddocks and around sheds etc. With the aim of keeping his spray volume up and reducing the potential for spray drift, the boom has been fitted with 110025 Purple Air Inducted nozzles to achieve 100lt/ha volume at less than 3bar pressure. Pictured is John Hicks with his new boom spray.



Last month's article on the S.Houle Rock Bucket piqued the interest of Niangala farmer **Dale Brazel** who was looking for a method to pick up Forage beets he has growing as a trial for cattle fodder. The beets are grown on top of the ground and at 8 kg each, take some handling. The S.Houle bucket (Made in Canada) has Cast steel 'teeth/points' welded to 35mm rod making the bucket very robust and ideal for the task at hand. The side benefit is to give Dale the opportunity to clean up isolated small areas of rock from a few areas of the property. Pictured is Dale Brazel with his S.Houle 2100mm rock bucket.

CommonwealthBank
AGQUIP

18 - 20 August 2015

DAILY PRIZE DRAW

- New Holland Ambra Oil
- New Holland Toy Ride-On Tractor



New Holland Site QR/31-35

Look over the range of Tractors - compact to large, Harvesting & Haymaking Equipment



Goodwin Kenny will be performing a series of "on farm" demonstrations leading up to and following Agquip 2015. Our demonstration tractor will be a New Holland T7.200 Standard Wheel Base

- 50kph Auto Command (CVT) Transmission • Front Terraglide Suspension
- 6.7 litre Engine, Common Rail Injection • 155 Rated Engine Horsepower
- 140 PTO HP, 540/540E(750)/1000 RPM PTO Speeds

To book your New Holland T7.200 demonstration or "test drive" call Peter Kenny at Gunnedah on 67425777 or Tony Housden at Tamworth on 67655244



GOODWIN KENNY

Tractor and Farm Machinery
Dealers since 1962.

**For all your Scheduled
Services and Repair work
on New Holland, Fiat, Ford,
Case & Versatile Tractors,
Balers and
Haymaking equipment,
Silvan Sprayers and all
slashers - call our
experienced team.**

**ARC RTA AIRCONDITIONING
LICENCE AU11959**



Ken Hatton
Tamworth

Service Manager at Tamworth. Over 10 years with Goodwin Kenny. Experienced with New Holland, Fiat, Case & Ford tractors & Air Cond.



Merv Leard
Tamworth

Over 19 years with Goodwin Kenny. Specialist with New Holland Balers, mower conditioners and haymaking.



Levi Alley
Tamworth

Commenced training as Apprentice in 2005 & now has over 10 years with Goodwin Kenny. All Tractors and licenced for Air Conditioning.



Con Smit
Tamworth

Over 31 years with Goodwin Kenny. Has worked on many Fiat tractors and crawlers and is now passing on his knowledge to the others.



Nathan Keel
Tamworth

Commenced Mechanical Apprenticeship in 2014. Working with Merv to acquire knowledge of Balers & Haymaking gear.



Dave Pease
Gunnedah

Service Manager at Gunnedah Branch. Nearly 10 years with Goodwin Kenny. Works on New Holland, Case & Ford Tractors, Guidance and Air Conditioning.



Lachie McARTHUR
Gunnedah

4th Year Apprentice - commenced in 2012. Has an Air Conditioning Trainee Licence.

Bogballe Spreaders - (Pronounce it "Bo-Bali")

These high quality twin disc spreaders made in Denmark have been available in Australia for some years, with a range from 0.5 tonne up to 6 tonne, these 3 point linkage machines can achieve precision application over spreading widths from 10 metres through to 42 metres.

The range of options from basic manual rate adjustment through to computerised section and placement control with GPS operation is extensive.

In Stock at Tamworth is an L2 Plus

1150litre/1250kg capacity. Hydraulic on/off control, Folding cover and spreading vanes for 20-24metre spreading width.

In Stock at Gunnedah have a M2 Base

3300litre/3630kg capacity. Hydraulic on/off control, Folding cover and spreading vanes for 36-42metre spreading width.

Call in for a demonstration at either branch or view at Agquip

bogballe

L2 Plus



M2 Base



SIP Hay Making Machinery

STAR 360/10 - Redesigned about 5 years ago, the 360/10 is a Professional Series PTO driven rotary hay rake, the stronger frame and undercarriage ensures a high working capacity and produces a superior windrow. The tandem axle undercarriage ensures optimal rotor stability and rake finger height in operation. The modular Rotor has the benefits of minimum maintenance, easily greased, adjustable discharge point for the hay and individually replaceable tine arms. When set up correctly the SIP Star 360/10 will deliver optimum raking speeds with low windrow contamination, minimum crop damage thereby ensuring maximum crop yield with maximum nutrient values in your hay or silage.

The Farmliner 350/9 is an economical alternative for the smaller operator who does not need all the features offered by the 360/10.

*SIP Rakes - Over 11 years of successful raking in the Tamworth and Gunnedah districts
See the SIP Rakes on the INLON Site at Agquip*

FPT Engines - Goodwin Kenny, Gunnedah Branch recently had a visit from some international CNH representatives.

After the "Geared For Growth" Trade Fair held in Sydney, Product Manager Aftersales for FPT Engines, Richard Palma flew to Tamworth and along with Mr Cai Hao, Senior Manager Far East and Mr Fabio Berton, Manager Africa and Middle East were driven to Gunnedah by Brad Troe, New Holland Aftersales Manager for Northern Region.

In Gunnedah they carried out a presentation for the staff on the new Irrigation Engines and Powerpacks from FPT (Fiat Powertrain Technologies). These engines now range from 75hp through to 500hp and can come in varying configurations to suit any pumping requirement. FPT also have released a range of generating sets (Genesis) ranging from 30Kva through to 400Kva.

Picture shows L-R Mr Cai Hao, Senior Sales Manager Far East from China, Brad Troe, Aftersales Manager Northern Region, Mr Fabio Berton, Manager Africa & Middle East from Italy, Peter Kenny, Mr Richard Palma, Product Manager Aftersales for FPT Sydney.



Are you eligible for the \$20,000.00
Small Business Tax Break?

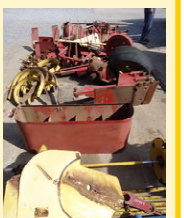
**WRITE OFF EQUIPMENT
PURCHASES UP TO \$20,000.00**

With the recently announced
Federal Budget -
small businesses (with a turnover
under \$2 million) can claim a full
tax deduction for business assets
under \$20,000.00

**Are you looking for parts for older
balers or cheaper parts? We have
some used and old stock parts for:**

New Holland 317 Small Square Baler,
**New Holland Super 417
Baler**, New Holland
BB940AP Big Square
Baler, **SIP 470 Rake**

**Call Tamworth
Spare Parts 67655244**





TIME TO GET YOUR SPRAYER READY!

Efficient filtration is an important component of every sprayer. Effective filtration will prevent blocked nozzles, reduce or inhibit pump wear and help reduce down time and expense due to repairs. Check your nozzles as they are prone to wear. Nozzles which are worn will affect the success of your spray patterns. Silvan Selecta offers a choice of foot, suction, pressure line, nozzle and high volume irrigation filters to suit most applications.



COME IN AND SEE THE SILVAN DISPLAY FOR YOUR SPRAYING NEEDS

SILVAN SELECTA CLEAN SPRAY - 5 litre bottle of Clean Spray to pump through your sprayer to ensure all parts of your equipment that come into contact with chemical, can be cleaned. Cleans your spray tank, pump and spray lines. Ideal for boom sprayers, airblast sprayers, turbomisers and 12 volt sprayers. Part No: 071-6 \$119.00 inc GST

Boomless Nozzle attaches to your ATV rack & can run off your 12 volt pump

SILVAN BOOMLESS NOZZLE KITS

Eliminate the need for a spray boom on your ATV with a durable single sided boomless nozzle kit that provides an efficient spray to 3.7 metres.

Can be set for spraying on either side depending on the type of coverage needed and type of pump used.

1 Jet Kit: Part No: M99-74 \$190.00 inc GST

2 Jet Kit: Part No: M99-75 \$243.00 inc GST

SLASHER BLADES



Howard Blade Kits



2 Blades, 2 Bolts, 2 Bushes & 2 Nuts



HEAVY DUTY SAFETY CLUTCHES

60HP Capacity Safety Clutch

1 3/8" x 6 spline female

1 3/8" x 6 spline male

Part No: B3605 \$243.25 inc GST

40HP Capacity Safety Clutch

1 3/8" x 6 spline female

1 3/8" x 6 spline male

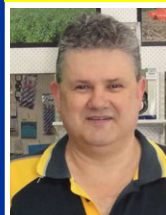
Part No: B4164 \$227.87 inc GST



GOODWIN KENNY

Tractor and Farm Machinery
Dealers since 1962.

For all your Spare Parts and great service from our experienced team



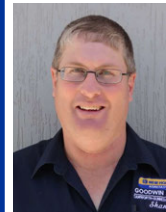
David Hartmann
Tamworth

Over 7 years with Goodwin Kenny. Over 35 years in Ag industry. Experienced with New Holland, Case, Ford, John Shearer & Silvan.



Peter Mackay
Tamworth

Over 7 years with Goodwin Kenny. Many years in Council & Private Business. Experienced with New Holland, Fiat, Ford, John Shearer & Silvan.



Shane Bridges
Tamworth

Newest member - Goodwin Kenny team. Over 20 years in Ag Industry. Experienced with Case, John Shearer, Gyrat, Silvan, Points and discs.



Mark Kenny
Gunnedah

Over 33 years with Goodwin Kenny. Experienced with New Holland, Versatile, Fiat, Simplicity, Gyrat, Connor Shea, John Shearer.



Ken Mack
Gunnedah

Over 13 years with Goodwin Kenny experienced with New Holland, Gyrat, John Shearer, Howard, Morris, Silvan & Simplicity.



Keith McPhie
Armidale

Over 12 years with Goodwin Kenny. At Armidale - a wide range of parts: Filters, Oils, Twine, Slasher Blades, Bolts & Nuts, Points, BareCo, Silvan, SXM

***AGPOINT *BARECO *CHALLENGE
*DAVEY AFM *DAVIMAC
*GREAT WESTERN TILLAGE *GYRAL
*HOWARD *JANKE *JARRETT *JAYLOR
*McHALE *MURRAY HARROWS
*MORRIS *NEW HOLLAND *SILVAN
*JOHN SHEARER *SIMPLICITY *SIP
*SXM *SUPERIOR *TAARUP *VICON**

246 Bridge St. **TAMWORTH**

(02) 6765 5244

42 Mullaley Rd. **GUNNEDAH**

(02) 6742 5777

139 Miller St.

ARMIDALE

(02) 6772 8124

www.goodwinkenny.com.au



NEW HOLLAND TOY RIDE-ON TRACTORS & ATTACHMENTS



Perfect gift for the little farmer!



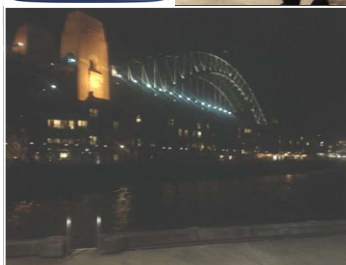
Call in & browse through the New Holland Toy Catalogue for the full range

You can take the boy out of the country, but you can't take the country out of the boy!

Peter Mackay from Goodwin Kenny, Tamworth attended the New Holland Trade Fair - "2015 Geared for Growth", on Thursday 23rd July to Saturday 25th July in the "Big Smoke". Geared for Growth allows dealers and their staff to access the latest products and developments in the New Holland product range. With informative breakout sessions on NGPC, OEM Filters, Merchandising, CNH Emission Technology and OAT Coolant, floor training, a chance to network with other dealers, suppliers and with local and overseas experts attending, Pete found the Trade Fair very informative and it was convenient having everything under one roof.

On the Friday night, Pete got the chance to let his hair down and have dinner on a Sydney Harbour cruise with other dealer staff and New Holland personnel.

Pleased to say, after the flights and a couple of days in Sydney, Pete was happy to be home and have his two feet planted back on Tamworth soil when he returned.



OPEN SATURDAY MORNINGS - Tamworth Branch from 9am to 12pm. Gunnedah Branch from 8:30am to 11:30am.

MONTHLY WINNERS Congratulations to our New Holland Beanie Winners:

MR & LM O'Keefe - Yarrowitch, Grant Family Past - Tamworth, Tymena P/L—Quirindi

This month we have 3 **NEW HOLLAND Beanies** to give away - simply return your payment by Tuesday 25th August, 2015 to go into the draw.

We would also remind customers that we accept Visa & MasterCard over the phone & Debit cards may be used at all our Branches.

All payments by these methods are included in the monthly draw.

Electronic/Internet Payments on the last day of the month cannot be allocated until the next day - it would assist us greatly if payments could be made prior to the last day of the month to allow receipting and allocation to accounts prior to Month end.....thank you.



For Customers that use Internet Banking, our bank account details are:

Commonwealth Bank BSB: 062 602 Account Number 00 272 029

Please use your account number, name or invoice number as a reference.

JOKE—fact or fiction ?

The first testicular guard, the "Cup," was used in Hockey in 1874 and the first helmet was used in 1974.

That means it only took 100 years for men to realize that their brain is also important.

Ladies.....Quit Laughing.

Just to keep you up to date:

Wean Picnic Races -

The Wean Committee were blessed with great weather for a wonderful day at the Races. Many in attendance adopted the Red and White dress theme, and there was a smattering of 1915 period costume. Gunnedah Shire Band again provided the entertainment and there was lots for the children to do with a jumping castle and a miniature train. The race program started with a win for local trainer Gavin Groth and "Princess Emily", pictured being presented with his trophy by myself representing the Tamworth and Gunnedah Business Sponsors. I was lucky enough to get a tip on the second race while chatting at lunch and was pleased to back a winner in "Hard to Resist" trained by Armidale local Stirling Osland, I bet his dad, Rudd, was proud! I had a couple of other "places" on the day and came away without giving too much money to bookmaker and old friend, Terry Picone. Wean provided a lovely setting to catch up with a number of people from around the district especially former Tamworth (and Gunnedah) resident Margie Pink, and her friends Cath Cussan and Ros Hartley. Each year the Committee nominate a beneficiary and the proceeds from this year's event went to the Manilla Equine Sporting Association. My advice.....put Wean Picnic Races in your diary for next year.



Glenn Furner writes.....

It was not my intention to be writing this for a few years yet, but I think you all know the saying "the best laid plans of mice and men", and as many of you will already have been informed I have recently (unwillingly) retired from my position as salesman for Goodwin Kenny Gunnedah due to some very unexpected and rather dramatic health issues. Having served in this position for just over thirteen years I have forged many particularly close and trusting relationships, not only with my employers - Peter and Sue, and their team, but also with the farming community and commercial customers who have supported me in my role.

The challenges and rewards have all been a rich driving force. I undoubtedly will miss these challenges, the long days, the endless miles and interminable phone calls, but by the number of calls, visits from well wishers, support for my family and myself I know I will always have friends and that makes it all so worthwhile.

It is my intention to stay living in Boggabri, spending time with my family, learning to live a more healthy lifestyle, catching up on some home renovations and taking time to see family and friends in distant places from far north Queensland to Victoria, so that should keep me occupied for a while.

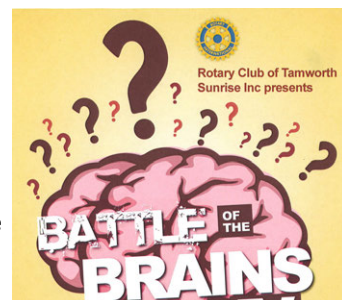
A very special thank you to Peter and Sue for their support, not only during my recent illness and decision making over the past few weeks, but over the past thirteen years in times of family and personal crises that have arisen to test and try us, their depth of sincerity and empathy previously unknown in my fifty one years in the farm machinery industry.

I would like to wish Peter and Sue, their staff and customers every success in their future endeavours and hope to see you all at times around town and at various functions we all attend.



More fundraising - Gunnedah Shire Band will have their **Agquip Food Stall** in operation again this year - so if you are hungry look for their stand at P/25 and support a local organisation.

Another community fundraiser : **Rotary Club of Tamworth Sunrise Battle of the Brains** which will be held on Saturday 5th September at West Diggers. Tables of 8 are \$200.00. Fantastic prizes with funds raised going to local Charities. Goodwin Kenny will enter a team and try to improve on last year's performance. For information contact Tony Housden - 0437 337131.



We are sad to advise that after 13 years Glenn Furner, our Salesman at Gunnedah, has resigned due to health issues (see note from Glenn at left). Glenn has given Goodwin Kenny great service over those 13 years and has come to know many of our customers and I am sure he will be missed. During his 51 years in the Farm Machinery Industry Glenn had gathered a wealth of knowledge which he was happy to share with work colleagues and customers. For the time being Peter Kenny will be handling all Sales enquiries at Gunnedah and it will be business as usual. We wish Glenn and his family happiness in his retirement.

..Susan Goodwin

GOODWIN KENNY

Tamworth • Gunnedah • Armidale



USED EQUIPMENT
AUGUST 2015



246 BRIDGE STREET, TAMWORTH - 02 6765 5244

TONY HOUSDEN: 0437 337 131



NEW HOLLAND BR740A Round Baler.

This baler has had an extensive overhaul. New belts, chains & sprockets as required.

Workshop checked by Merv

SPECIAL \$30,000.00 inc GST



NEW HOLLAND T6030

115 HP, 6 Cylinder, Common Rail, Range Command Semi Powershift, 19 Forward x 6 Reverse Gears, Challenge L3900 FEL. With 4 in 1 bucket

\$99,000.00 inc GST... Standard bucket \$95,000.00 inc GST



NEW HOLLAND TM190

190HP, FWA, Cab, 18 Speed Powershift, Super Steer Front Axle, 4 Remotes, 1900 hours.

\$99,000.00 inc GST



JOHN DEERE 6210SE 90HP,

FWA, A/C CAB, 16x16

Synchro Trans,

Forward/Reverse shuttle, 3pl, 2 remotes.

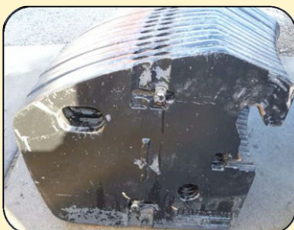
\$36,300.00 inc GST

CONSIGNMENT MACHINES TAMWORTH

NEW HOLLAND FRONT WEIGHT

off TG285, suits T8, T8000, other TG's

\$3,000.00 inc GST OR OFFER



SPRAYRITE CAMPO 3200

Trimble Field IQ controller ready to plug into FM750 guidance unit. Full hydraulics, electric over hydraulic controls for all boom functions, high lift & folds forward for storage/transport. Sprayed approx. 250ha.

\$49,500.00 inc GST



NEW - Machines In Stock



bagballe

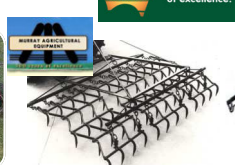
DIGGA



Silvan



Challenge Implements



CONSIGNMENT MACHINES ARMIDALE

SILVAN 200 LITRE AIRBLAST SPRAYER

Never had chemical in it, used on organic grapes. Very tidy, only 50 hours use.

\$3,300.00 inc GST



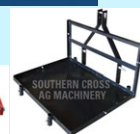
Keith McPhie
(02) 6772 8124



139 Miller Street
ARMIDALE

SX SOUTHERN CROSS
AG MACHINERY

Carryalls, Drag Harrows,
Slashers, Pipe Layers
& Rippers



Call for more information on new SXM machines



NEW Stock Unit Only

NEW HOLLAND TT4.75

The latest utility tractor in the TT range - now with new Forward/Reverse shuttle, new flat floor, plus much more.

\$47,300.00 inc GST



CASE MXU110

116HP, FWA, Cab, 16x16

Semi Powershift

Transmission, with new Challenge Front End Loader and 4 in 1 Bucket.

SPECIAL \$79,000.00 inc GST

We are the authorised dealers for:

AGPOINT - BARE-CO - CHALLENGE - DAVEY AFM - DAVIMAC - GREAT WESTERN TILLAGE - GYRAL - HOWARD - JANKE - JARRETT - JAYLOR - K-LINE - McHALE - MORRIS - NEW HOLLAND - SILVAN - JOHN SHEARER - SIMPLICITY AUSTRALIA - SIP - SOUTHERN CROSS AG MACHINERY - SUPERIOR - TAARUP - VICON

GOODWIN KENNY

Tamworth • Gunnedah • Armidale



USED EQUIPMENT
AUGUST 2015



42 MULLALEY ROAD, GUNNEDAH - 02 6742 5777 PETER KENNY: 6742 4502 A/H 0427 688 454

Just Traded

New Holland TD70D

2 Wheel Drive
Air Conditioned Cab
3pl, 2 Remotes
20 x 12 Transmission
8 Creeper gears
Mechanical Forward/
Reverse shuttle
Low Hours @ 864 Hours



NEW HOLLAND TM190
190HP, FWA, Cab, 4 Remotes,
18 speed Power Shift Trans,
Super Steer front axle.

\$99,000.00 inc GST



NEW HOLLAND 1432
Centre Pivot Trailed Mower
Conditioner (Flail type conditioner)
Suit grass crops.

SPECIAL \$30,000.00 inc GST

Just like
Elvis....
**GLENN
FURNER**
"has left the
building"



*All of us at Goodwin Kenny
wish Glenn all the
best for his retirement.*

For Sales Inquiries please
call Peter Kenny



CASE LBX332

Large Square Baler, 8x3x3,
Rotor Cutter Model, Single Axle.
Well maintained Baler.

\$55,000.00 inc GST



NEW HOLLAND BB960ARY
Large Square Baler, 4x3x8,
Silage Version with "W" Rotor
Cutter Feeding system.

SPECIAL \$99,000.00 inc GST



NEW HOLLAND TR70
22' open front & Comb Trailer
Twin Rotor Combine

\$\$ HEADER SALE



NEW HOLLAND TR85
Twin Rotor Harvester,
H/Static Drive, 1992 with
NH705 25' Bat Reel

\$\$ HEADER SALE



GYRAL TG/SC PLANTER

36ft, Hydraulic Blower, 2 x 1 Ton Bins

\$17,500.00 inc GST

As is -
where is



CHALLENGE BUCKET
2400mm, STD Earth,
21 Series lugs

\$2,500.00 inc GST

CALL IN ON THE WAY TO AG-QUIP



NEW HOLLAND TR89
Twin Rotor, H/Static Drive,
Straw Chopper, 72C 30' O/F
Bat Reel and Comb Trailer

\$\$ HEADER SALE



NEW HOLLAND TR98
Combine Harvester with
NH971 Bat Reel Front &
Inverell Welding Comb Trailer

\$\$ HEADER SALE

CONSIGNMENT MACHINES GUNNEDAH



NEW HOLLAND IRRIGATION ENGINE

Iveco 8.7 Litre
Motor, 383Hp @
2100 RPM

SPECIAL
\$51,700.00
Inc GST

Call Mark Kenny
at Gunnedah -
6742 5777



\$123,200.00 inc GST

K-LINE 935DDT SPEED TILLER
3.5 Metre Trailing Speed Tiller with KVA
Agriculture Model PS250 Electric Air
Seeder Mounted. Machine has never been used.

\$59,400.00 inc GST

NEW HOLLAND T7.185
FWA, A/C CAB & Suspension, 4 Mechanical
Remotes, 18 x 6 Range Command Transmission,
Standard Front Axle, New Holland/Challenge
L4200 FEL, 3rd Function, 2460mm 4 in 1
Bucket, Has FM750 Guidance and
Ezi-Steer Motor Fitted, only 400hrs.



For more photos visit: www.goodwinkenny.com.au