



New Holland TD5.100 is just right for the job

Ron Woodley from Boggabri sold his existing farm recently and was moving to a smaller and more manageable block. Ron was in need of a good tractor and loader combination to help with the move. He settled on a New Holland TD5.100 tractor with a Challenge AP35 Loader for ease of operation, and Ron felt the price was good too! The Loader was also equipped with a Hydraulic Drive Post Hole Digger and Auger to maintain existing fences for his stock. Ron is pictured at right with his new tractor.



Rachel decides on another New Holland TT tractor

Paul and Rachel Jones of Dixie, Gunnedah were in need of a tractor to start planting operations on their vegetable farm. Rachel, already owning a New Holland TT75 and front end loader, has gone for the updated New Holland TT4.75 ROPS Tractor and Challenge AP32 Plus Loader. The TT4.75 with Hydraulic Power Shuttle and the Loader's 4 in 1 Bucket will come in handy over the coming months for tilling up rows, rotary hoeing and disking in the many vegetable patches on the farm. Picture shows Rachel with her "helper", Pickles, the Jack Russell.



Adam updates mower conditioner for his contracting operation

Adam Skinner from Baradine recently upgraded his New Holland 1411 Mower Conditioner to a New Holland 313 Mower Conditioner. The 13' cut and centre pivot machine will enable Adam to take on more contract work in Baradine and surrounding areas and with the hay season shaping up to be quite busy, Adam is sure the new machine will perform to his expectations. Adam also has a New Holland RB150 Round baler and can be contacted on 0429 431809. Adam is pictured at right with his new 313 Mower.



Two for one

Just ahead of a busy fodder season

on their Tamworth Dairy, Scott and Karrie Whitten have decided to trade their two Mower Conditioners on a new New Holland H7230 with the 2 Point Linkage hitch. Scott said that he really didn't need two mowers but he really wanted the manoeuvrability of having a machine with 2 point hitch. The H7230 Mower Conditioner has Rubber conditioning rollers and Shockpro hubs to protect the cutterbar modules. Scott is pictured at left with Tamworth Salesman Tony Housden.



Making Hay Faster at Wenona, Edgeroi

With a few hundred acres of Oats and Wheat ready to cut for hay and problems with their old Mower Conditioner, John and Rob (pictured at right) Aitken needed a new machine and quickly. Luckily we had a New Holland H7230 Discbine Mower Conditioner in stock and were able to get it predelivered and in the paddock 48 hours later. The New Holland H7230, with a cutting width of 3m, was able to reduce the cutting time considerably over the old New Holland Sickle mower and put hay into the shed sooner.



Time for an Upgrade ??

We have New Holland BC5060 and BC5070 Small Square Balers in stock.

Also RB150 Round Balers and New Holland H7230 Mower Conditioners.

Talk to us about the ultimate in hay making equipment and ask about the competitive Finance Rates.



GOODWIN KENNY

Tractor and Farm Machinery
Dealers since 1962.

**For all your Scheduled
Services and Repair work
on New Holland, Fiat, Ford,
Case & Versatile Tractors,
Balers and
Haymaking equipment,
Silvan Sprayers and all
slashers - call our
experienced team.**

**ARC RTA AIRCONDITIONING
LICENCE AU11959**



Ken Hatton
Tamworth

Service Manager at Tamworth. Over 10 years with Goodwin Kenny. Experienced with New Holland, Fiat, Case & Ford tractors & Air Cond.



Merv Leard
Tamworth

Over 19 years with Goodwin Kenny. Specialist with New Holland Balers, mower conditioners and haymaking.



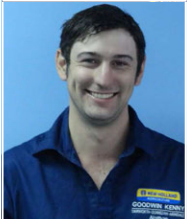
Levi Alley
Tamworth

Commenced training as Apprentice in 2005 & now has over 10 years with Goodwin Kenny. All Tractors and licenced for Air Conditioning.



Con Smit
Tamworth

Over 31 years with Goodwin Kenny. Has worked on many Fiat tractors and crawlers and is now passing on his knowledge to the others.



Nathan Keel
Tamworth

Commenced Mechanical Apprenticeship in 2014. Working with Merv to acquire knowledge of Balers & Haymaking gear.



Lachie McARTHUR
Gunnedah

4th Year Apprentice - commenced in 2012. Has an Air Conditioning Trainee Licence.

Improved SIP 600/20 is ideal

With the purchase of a new farm and most of the existing machinery at Manilla, the one new machine that Mal Carter and Mick Osborne (pictured at the start-up of their rake) wanted to complete their hay plant was a twin rotor hay rake. After their experience with an older SIP Star 360/10 single rotary rake – they were only interested in another SIP. The 2015 SIP 600/20 Rake they have purchased has been upgraded and improved significantly and according to Goodwin Kenny Hay Technician Merv Leard it is probably equal to any rake on the market and better than most! As a side delivery rake the SIP 600/20 has the ability to rake 2 individual windrows, or put 2 windrows into one with a single hydraulic action.



Bomford Folding Mower

With a need to get his spring pasture topped for improving the growth and palatability for stock, Bill Mitchell of Guyra has chosen a Bomford 4600 Tri-wing folding slasher to complete the task. The 4.6m(15') cut machine has 3 long blades per cutting head to provide a degree of mulching while covering the paddocks in a timely manner. Made in England for many years, the body is a heavily built smooth top with high lift through rear wheels, while clutches protect all the gearboxes. Pictured is Bill Mitchell, Glenbrook Past Co and Tony Housden (Goodwin Kenny Salesman).



Making Hay in the West

Haymaking in the west of NSW is a bit different to around Tamworth and Warren Rural P/L at Quambone have just taken delivery of a new K-Line finger wheel rake (pictured with Kodey Sinclair and Gina Goodwin) to complement their recently purchased used New Holland 1432 Mower Conditioner & used New Holland BB960A Big Baler (shown below installed by Merv Leard). The K-Line DR14 rake is capable of pulling 2 or 3 windrows together in lighter oat and wheaten hay crops. This rake is carried on a substantial centre beam and along with hydraulic wheel lift, adjustable wheel pressure and easily adjustable raking angle make this a



versatile and effective rake for these dry land crop situations. The need to get some feed and utilise some of the crops that will not quite make it to harvest or are a bit "light" has been the driving force to invest in a hay plant this year, rather than rely on the availability of contractors.

A Muller Accumulator for Maurice Mondolo

As Maurice has been upgrading his Hay plant over the last few years to make it more efficient as a one man operation, the one area that was still hard work was handling small bales out of the shed. Maurice's New Holland Bale Wagon has done a great job picking bales up and putting them in the shed over the years, however, to make the process easier physically and safer, Maurice looked at various 15 bale Accumulators and grabs before deciding on the Muller Fabrication Accumulator and Grab. Maurice is pictured with Tony Housden (Salesman) at the delivery installation.

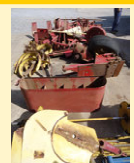


Are you looking for parts for older balers or cheaper parts?

We have some used and "new" old stock parts for:

New Holland 317 Small Square Baler, New Holland Super 417 Baler, New Holland BB940AP Big Square Baler, SIP 470 Rake

Call Tamworth Spare Parts 67655244



1 HUSTLER
Rethinking the Everyday

BALEFEEDERS >

BALEHANDLERS >

SPRAYERS >



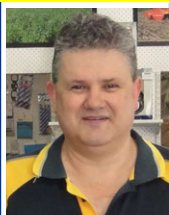
Chainless X5000 The top of the range trailed Chainless balefeeder, self-loading, suitable for feeding out any bale, round or square, and it maximises feed use. The Chainless X5000 carries 2 bales at a time and is designed for medium to large operations feeding out 800+ bales per year. **In stock at Tamworth now.**



GOODWIN KENNY

Tractor and Farm Machinery
Dealers since 1962.

**For all your Spare
Parts and great
service from our
experienced team**



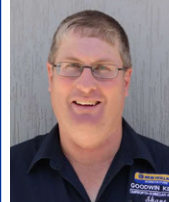
David Hartmann
Tamworth

Over 7 years with Goodwin Kenny. Over 35 years in Ag industry. Experienced with New Holland, Case, Ford, John Shearer & Silvan.



Peter Mackay
Tamworth

Over 7 years with Goodwin Kenny. Many years in Council & Private Business. Experienced with New Holland, Fiat, Ford, John Shearer & Silvan.



Shane Bridges
Tamworth

Newest member - Goodwin Kenny team. Over 20 years in Ag Industry. Experienced with Case, John Shearer, Gyril, Silvan, Points and discs.



Mark Kenny
Gunnedah

Over 36 years with Goodwin Kenny. Experienced with New Holland, Versatile, Fiat, Simplicity, Gyril, Connor Shea, John Shearer.



Ken Mack
Gunnedah

Nearly 15 years with Goodwin Kenny experienced with New Holland, Gyril, John Shearer, Howard, Morris, Silvan & Simplicity.



Keith McPhie
Armidale

Over 13 years with Goodwin Kenny.
At Armidale - a wide range of parts: Filters, Oils, Twine, Slasher Blades, Bolts & Nuts Points, BareCo, Silvan, SXM

***AGPOINT *BARECO *BOGBALLE
*CHALLENGE *DAVEY AFM *DAVIMAC
*GREAT WESTERN TILLAGE *GYRAL
*HUSTLER *JANKE *JARRETT *JAYLOR
*McHALE *MURRAY HARROWS
*MORRIS *NEW HOLLAND *SILVAN
*JOHN SHEARER *SIMPLICITY *SIP
*SXM *SUPERIOR *TAARUP *VICON**

246 Bridge St. **TAMWORTH**
(02) 6765 5244
42 Mullaley Rd. **GUNNEDAH**
(02) 6742 5777
139 Miller St.
ARMIDALE
(02) 6772 8124



www.goodwinkenny.com.au

Silvan SELECTA

Spring Fever Sale

Prices valid from 1st September to 31st October 2015

55 Litre Redline Spotpak Sprayer

Ideal for weed control and spot spraying

- 2.5 L/min open flow
- 6m delivery hose with 550mm stainless steel spray lance with a adjustable nozzle
- Lance holder to secure spray gun
- Lid retaining ring to prevent accidental loss of lid
- Includes measuring jug that is stored securely under the lid.



Part No: SP55-R1
\$235.00 inc GST

15 Litre Chapin Piston Knapsack

Professional sprayer for weed & pest control or liquid fertilising

- Viton seal
- 3 stage filtration
- Superior anti-spill lid

Part No: CP-61800
\$179.00 inc GST



16 Litre Rechargeable Backpack Sprayer

Professional sprayer for weed & pest control or liquid fertilising

- Approx. 4 hour continuous run time with on-demand pump
- 40 psi pump

Part No: WP16-6
\$185.00 inc GST



12V Aquatec 20L/min Pump

Ideal for boom spraying

- 20 L/min open flow or 60 psi maximum
- Viton valves, Santoprene diaphragm

Part No: DDP-550
\$185.00 inc GST



2088 Shurflo

Ideal for higher flow applications

- 11.3 L/min or 45psi maximum
- Viton valves, Santoprene diaphragm

Part No: 361-2088
\$299.00 inc GST



Wide Angle Motion Activated 12MP Security Camera

Thefts from farm and rural properties are on the increase.

Monitor farm gates & driveways, sheds, garages, livestock, fuel supplies, machinery and tools.

- 120° wide angle lens captures a larger area compared to standard Camera
- Comes with a 16GB SD Card • Day and night use
- Ideal for close-in targets or objects in peripheral vision
- Long battery life - standby up to 9 months
- IP54 water proof rating • Motion activated - records videos and photos

Part No: SECURE120 \$365.00 inc GST

- Standard 52° View Motion Activated 12MP Security Camera

Part No: SECURE01 \$299.00 inc GST

- Adjustable wall mounting bracket to suit Motion Activated

Security Camera (Mounting screws included) **Part No: SECURE02 \$8.30 inc GST**



TWINE and NET

Part No. 73322219	Small Square Twine 4480 metre	\$82.47 inc GST (YELLOW)
Part No. 87463635	Small Square Twine 4000 metre	\$105.24 inc GST (ORANGE)
Part No. 73322218	Large Square Twine 2200 metre	\$108.03 inc GST (YELLOW)
Part No. 87463634	Large Square Twine 2200 metre	\$109.32 inc GST (ORANGE)
Part No. 73322220	Round Baler Twine 9200 metre	\$70.52 inc GST (YELLOW)
Part No. 87463636	Round Baler Twine 9000 metre	\$92.92 inc GST (ORANGE)
Part No. 73322221	Q-Net 3300 metre x 1.23 metre	\$451.77 inc GST
Part No. 73322131	INFINET 3600 metre x 1.23 metre	\$609.53 inc GST
Part No. 73340502	BLACK NET 1500 metre x 1.2 metre	\$393.21 inc GST

Hay & Silage Improver

By creating lactic acid more rapidly, more energy and protein is preserved in hay and silage for increased milk and meat production.

Available in 20 Litre Drum.

Part No: HY-SI20 \$324.50 inc GST

We buy directly from the Importer - Saving you \$\$\$



HAY/SILAGE TINES

All Tines are made of Spring Steel – Made in Germany by SHW.

Available for Conus I and II fittings.



OPEN SATURDAY MORNINGS - Tamworth Branch from 9am to 12pm. Gunnedah Branch from 8:30am to 11:30am.

MONTHLY WINNERS

Congratulations to our New Holland Cap Winners:

Connamarra Partnership - Quirindi,
Graham Sims - Nemingha, Peter Holloway - Duri



This month we have 3 **NEW HOLLAND Caps** to give away - simply return your payment by Monday 26th October, 2015 to go into the draw.

We would also remind customers that we accept Visa & MasterCard over the phone & Debit cards may be used at all our Branches.

All payments by these methods are included in the monthly draw.

Electronic/Internet Payments on the last day of the month cannot be allocated until the next day - it would assist us greatly if payments could be made prior to the last day of the month to allow receipting and allocation to accounts prior to Month end.....thank you.

For Customers that use Internet Banking,
our bank account details are:

Commonwealth Bank

BSB: 062 602 Account Number 00 272 029

Please use your account number,
name or invoice number as a reference.

**New England Antique
Machinery & Heavy Horse
Field Days 29th Annual Rally**
Vintage Working Machinery * Small
Motors * Tractors * Steam Engines
* Horse Drawn Machinery * Working Draught Horse
Demonstrations * Blacksmith & Heavy Horse Shoeing
* Vintage Cars, Trucks & Motorcycles * Military Vehicles
* Swap & Sale * Tractor Pull **GRAND PARADE DAILY**
FEATURING FERGUSON and MASSEY HARRIS



ARMIDALE EXHIBITION CENTRE

7th and 8th November, 2015

Saturday 9.00am – 4.00pm * Sunday 9.00am – 3.00pm

Admission: Adults \$8, Concession \$5, Children free.

Accommodation contacts available. Catering on site.

For further information or enquiries
contact: Neville 0429 233 109 or
Bronwyn 0408 658 594 N.E.A.M.C.,
PO Box 1144, Armidale, 2350
N.E.A.M.C. in conjunction with
The Armidale Draught Horse Group



JOKE OF THE MONTH - The Wooden Ball

An old man walks into the barbershop for a shave and a haircut, but he tells the barber he can't get all his whiskers off because his cheeks are wrinkled from age. The barber gets a little wooden ball from a cup on the shelf and tells him to put it inside his cheek to spread out the skin. When he's finished, the old man tells the barber that was the cleanest shave he's had in years. But he wanted to know what would have happened if he had swallowed that little ball. The barber replied, "Just bring it back in a couple of days like everyone else does".

Just to keep you up to date: Last week I had a customer come into the office with a complaint !! Apparently last month's Newsletter was causing him to gain weight. His grandson was making the Milo 3 minute pudding so often I was now to blame for the increase in his waistline.



I wonder what he will say after trying this very easy "cool" recipe.....**Malteser Fudge**

Ingredients 280g pack of Maltesers 395g tin of sweetened condensed milk,
200g of milk chocolate – cut into small pieces 200g of dark chocolate baking melts

Instructions Line a 20cm square baking dish with baking paper – make sure you leave paper hanging over the edge. Place the Maltesers in a single layer over the base of the lined tin. Combine the condensed milk, chocolate and melts in a microwave safe bowl and cook in the microwave for 30 seconds spurts until melted. Stir until smooth. Quickly pour the melted mixture over the top of the Maltesers and gently smooth the top. Place in the fridge for 2 hours or until set. Remove from the fridge and carefully lift the fudge out of the baking tin. Cut into small pieces and enjoy!



New Holland has announced a major partnership with Prostate Cancer Foundation of Australia. The partnership will see New Holland and PCFA working together to raise awareness of prostate cancer, primarily in rural areas, where men are 20% less likely to survive the disease than those who reside in metropolitan areas. Overall Prostate Cancer accounts for 30% of all non-skin cancer diagnosis in males each year with more than 20,000 men diagnosed, and sadly 3,300 losing their battle.

Did you know? Nine men die from Prostate Cancer every day.

In the early stages of Prostate Cancer there may be no symptoms. The positive news is 92% of men will be alive 5 years after a diagnosis of Prostate Cancer. For more information visit www.pcfa.org.au or FREECALL 1800 220099



A reminder that our New Holland T7.200 Demonstrator tractor is in Gunnedah - so why not take the opportunity to "test drive" this tractor. Call Tony Housden at Tamworth on 67655244 or Peter Kenny at Gunnedah on 67425777.



This little gem about Baler Twine appeared on Facebook recently and provides a bit of humour as we are all busy at the moment with the baling season kicking off. Spare Parts has been a hive of activity with customers looking for twine and net and replacement parts for some of the older Baling equipment. Our Hay Technician, Merv Leard, is also "on the run" as we endeavour to keep everybody going and happy.

(It is probably timely that I mention our "Off Season" Servicing Program which we will be running again in Autumn - this is the best time to have your baler or mower serviced ready for next season). Anyway, please be patient with our Spare Parts and Service team at this time and be assured that we are always doing our best to help you get the job done.

Some words of wisdom for this month ...Susan Goodwin



GOODWIN KENNY

Tamworth • Gunnedah • Armidale



USED EQUIPMENT
OCTOBER 2015



246 BRIDGE STREET, TAMWORTH - 02 6765 5244 TONY HOUSDEN: 0437 337 131



NEW HOLLAND TD70D

2 Wheel Drive, A/C Cab, 3pl,
2 Remotes, 20 x 12 Trans,
8 Creeper gears, Mechanical Forward/Reverse shuttle
\$25,000.00 inc GST



NEW HOLLAND T6030

115 HP, 6 Cylinder, Common Rail, Range Command Semi Powershift, 18 Forward x 6 Reverse Gears, Challenge L3900 FEL. With 4 in 1 bucket
\$99,000.00 inc GST... Standard bucket \$95,000.00 inc GST



NEW HOLLAND TM190

190HP, FWA, Cab, 18 Speed Powershift, Super Steer Front Axle, 4 Remotes, 1900 hours.
\$99,000.00 inc GST



NEW HOLLAND BR740A Round Baler

This baler has had an extensive overhaul. New belts, chains & sprockets as required.
Workshop checked by Merv
SPECIAL \$30,000.00 inc GST



NEW HOLLAND 658

Round Baler
Silage Special, Net with Bale Slice, Bale count only 13,500 bales, Serviced regularly, 1999 model, good belts.
\$19,800.00 inc GST



KRONE VP 1500

Round Baler
Slat baler with cutters, Only 8900 bales, Silage ready, Net Wrap, Very good condition, Just traded and being Workshop checked.
\$19,800.00 inc GST

CONSIGNMENT MACHINES TAMWORTH

NEW HOLLAND FRONT WEIGHT

off TG285, suits T8, T8000,
other TG's

\$3,000.00 inc GST OR OFFER

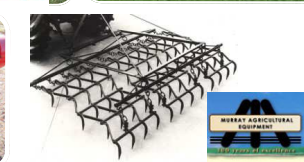
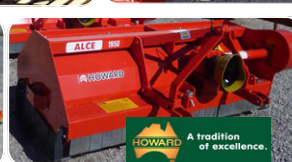


SPRAYRITE CAMPO 3200

Trimble Field IQ controller ready to plug into FM750 guidance unit. Full hydraulics, electric over hydraulic controls for all boom functions, high lift & folds forward for storage/transport. Sprayed approx. 250ha.
\$49,500.00 inc GST



NEW - Machines In Stock



**Howard 150
Nugget 5' Slasher**
List Price: \$3,465.00
**SPECIAL PRICE
\$2,700.00 inc GST**

Alice 1950 Mulcher
Rear wheels & wear sheet
List Price: \$11,698.00
**SPECIAL PRICE
\$9,680.00 inc GST**

Super Alice 3200 Mulcher
Dual wheels & wear sheet
List Price: \$23,092.00
**SPECIAL PRICE
\$21,000.00 inc GST**



We are the authorised dealers for:

AGPOINT - BARE-CO - BOGBALLE - CHALLENGE - DAVEY AFM - DAVIMAC - GREAT WESTERN TILLAGE - GYRAL -
HUSTLER - JANKE - JARRETT - JAYLOR - K-LINE - McHALE - MORRIS - NEW HOLLAND - SILVAN -
JOHN SHEARER - SIMPLICITY AUSTRALIA - SIP - SOUTHERN CROSS AG MACHINERY - SUPERIOR - TAARUP - VICON

GOODWIN KENNY

Tamworth • Gunnedah • Armidale



USED EQUIPMENT OCTOBER 2015



42 MULLALEY ROAD, GUNNEDAH - 02 6742 5777 PETER KENNY: 6742 4502 A/H 0427 688 454

HEADER SALE



NEW HOLLAND TR70
22' open front & Comb Trailer
Twin Rotor Combine

\$\$ HEADER SALE



NEW HOLLAND TR85
Twin Rotor Harvester,
H/Static Drive, 1992 with
NH705 25' Bat Reel

\$\$ HEADER SALE



NEW HOLLAND TR89
Twin Rotor, H/Static Drive,
Straw Chopper, 72C 30' O/F
Bat Reel and Comb Trailer

\$\$ HEADER SALE



NEW HOLLAND TR98
Combine Harvester with
NH971 Bat Reel Front &
Inverell Welding Comb Trailer

\$\$ HEADER SALE



TRADE COMING IN

NEW HOLLAND T6010
DELTA, 2010 model,
102 Horsepower, Low Hours
Challenge AP38 Plus FEL with
2160mm 4 in 1 Bucket



NEW HOLLAND TM190
190HP, FWA, Cab, 4 Remotes,
18 speed Power Shift Trans,
Super Steer front axle.

\$99,000.00 inc GST



CASE LBX332
Large Square Baler, 8x3x3,
Rotor Cutter Model, Single Axle.
Well maintained Baler.

\$55,000.00 inc GST

NEW HOLLAND IRRIGATION ENGINE

Iveco 8.7 Litre Motor,
383Hp @ 2100 RPM



SPECIAL
\$51,700.00
inc GST

Call
Mark Kenny
at
Gunnedah



As is -
where is

GYRAT TG/SC PLANTER
36ft, Hydraulic Blower, 2 x 1 Ton Bins **\$17,500.00 inc GST**

CHALLENGE BUCKET

2400mm, STD Earth,
21 Series lugs
\$2,500.00 inc GST



CONSIGNMENT MACHINE GUNNEDAH

K-LINE 2935DDT SPEED TILLER

3.5 Metre Trailing Speed Tiller
with KVA Agriculture Model
PS250 Electric Air
Seeder Mounted.

Machine has never been used.

\$59,400.00 inc GST



139 Miller Street,
ARMIDALE -
02 67728124
Keith McPhie

Silvan 3pl
Pasturepak Sprayer

IN STOCK



Silvan 338 litre Spreaders



CONSIGNMENT MACHINES ARMIDALE

SILVAN 200 LITRE AIRBLAST SPRAYER

Never had chemical in it, used on organic
grapes. Very tidy, only 50 hours use.

\$3,300.00 inc GST



SX SOUTHERN CROSS
AG MACHINERY

Carryalls, Drag Harrows,
Slashers, Pipe Layers & Rippers



Call for more information on new SXM machines



CASE MXU110

116HP, FWA, Cab, 16x16 Semi Powershift Transmission,
with new Challenge Front End Loader and 4 in 1 Bucket.

SPECIAL \$79,000.00 inc GST

For more photos visit: www.goodwinkenny.com.au