



#### New Holland T4.95 Dual Command will handle many jobs

Looking for a smaller utility tractor for his Piallaway farm, Keith Mutton has chosen a New Holland T4.95 Dual Command tractor with cab and Challenge AP35 Front End Loader. This tractor is replacing an old Ford ROPS unit for spraying, slashing and all those little chores around the farm that prove a bit cumbersome for the larger tractors. Keith carried out significant research comparing various brands and models, looking at benefits, ease of operation and cost. The New Holland T4.95 Dual Command has a wet clutch manual transmission with 2 speed Power Shift and electro hydraulic Forward/Reverse shuttle. Pictured at delivery and installation are Keith Mutton and Goodwin Kenny Service Technician, Levi Alley.



#### Time for an update

After 15 years of baling with their very reliable New Holland 658 Baler, Alistair Yencken and Robbie Sefton, Braemar, Manilla have upgraded to the New Holland RB150 SuperFeed Baler. This decision was not because of any problems, but to maintain the reliability of operation and gain a little more efficiency in the time taken to bale. The New Holland RB150 SuperFeed baler has proven to be reliable and easy to operate. Alistair is pictured (at left) with his new baler which was installed with him in the paddock by Hay Service Technician, Merv Leard, just prior to baling season.

#### Welcome to new haymakers

Newcomers to the Dungowan Valley, Paul and Connie Ryman have had to put a complete hay plant together in a short time and climb a steep

learning curve with unfamiliar machinery to get their new hay farm into production. As usual in our district, neighbours have helped out immensely and Paul has sought out assistance when needed from our Hay Service Technician, Merv Leard. A new New Holland H7230 Mower Conditioner completed all the gear they needed, the H7230 Discbine has a side pull, 2 point hitch and is fitted with Shockpro hubs to protect the cutter bar modules. Paul is pictured at the start-up of the mower conditioner. We wish Paul and Connie well with their new endeavour.



#### Spotted at AgQuip

David Jones and his son, Malcolm, of Hawthorne Partnership run a Beef grazing property at Binnaway. For many years they have relied on a New Holland 658 Round Baler for their haymaking operations for stock feed. At the recent AgQuip Field Days they took the opportunity to view the New Holland Roll Belt RB150 Baler. They were impressed with the latest updates put into the machine and recently took delivery of their new New Holland RB150 SuperFeed Baler. Unfortunately at Binnaway they have been missing the rain in recent months, so the new baler is in the shed until some crop becomes available to bale. Pictured with the baler is David and Malcom Jones.



#### What a good looking combination!

Keith Blanch from Boggabri also took the opportunity to view the New Holland RB150 Roll Belt Baler at Ag-Quip this year and took delivery of his new machine this month for his own crops, plus some contract work that he has lined up. Keith traded his 2007 New Holland BR740A Baler on this machine. He is pictured at delivery of his new baler which was started up in paddock with Goodwin Kenny Hay Service Technician, Merv Leard, and it looks great behind his New Holland T7.220 tractor.

**We can help you with all the pieces of the puzzle**

**Spare Parts**

**Experienced Service Technicians**

**Stock Machines**

**An award winning team looking after you**





# GOODWIN KENNY

Tractor and Farm Machinery  
Dealers since 1962.

**For all your Scheduled  
Services and Repair work  
on New Holland, Fiat, Ford,  
Case & Versatile Tractors,  
Balers and  
Haymaking equipment,  
Silvan Sprayers and all  
slashers - call our  
experienced team.**

**ARC RTA AIRCONDITIONING  
LICENCE AU11959**



**Ken Hatton**  
Tamworth

Service Manager at  
Tamworth. Over 10 years  
with Goodwin Kenny.  
Experienced with New  
Holland, Fiat, Case &  
Ford tractors & Air Cond.



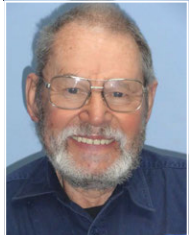
**Merv Leard**  
Tamworth

Over 19 years with  
Goodwin Kenny.  
Specialist with  
New Holland Balers,  
mower conditioners and  
haymaking.



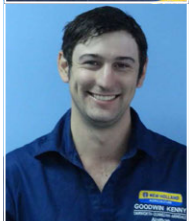
**Levi Alley**  
Tamworth

Commenced training as  
Apprentice in 2005 &  
now has over 10 years  
with Goodwin Kenny.  
All Tractors and licenced  
for Air Conditioning.



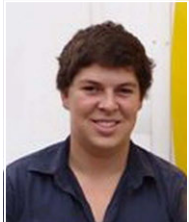
**Con Smit**  
Tamworth

Over 31 years with  
Goodwin Kenny. Has  
worked on many Fiat  
tractors and crawlers and  
is now passing on his  
knowledge to the others.



**Nathan Keel**  
Tamworth

Commenced Mechanical  
Apprenticeship in 2014.  
Working with Merv to  
acquire knowledge of  
Balers & Haymaking gear.



**Lachie McARTHUR**  
Gunnedah

4th Year Apprentice -  
commenced in 2012.  
Has an Air Conditioning  
Trainee Licence.

**Are you looking for parts for  
older balers or cheaper parts? We  
have some used and "new" old  
stock parts for: New Holland 317  
Small Square Baler, New Holland  
Super 417 Baler, New Holland  
BB940AP Big Square Baler,  
SIP 470 Rake Call Tamworth Spare Parts**



## Now that's a Blade!

It is a lot of years since we last sold an under axle  
blade. Ron Jones recently purchased a used 310hp  
New Holland T8.360 tractor for which Goodwin  
Kenny sourced a 3 metre blade. The unit will be  
used to spread compost at the Balala Composting



operation that Ron  
runs at Uralla.

The blade is called a  
Longhorn blade, made  
for large Front Wheel  
Assist and true 4WD

tractors by Kerfab Engineering. It is a seriously heavy duty  
blade and full under-axle frame. Two simple pins are removed  
to leave the blade standing on its own supports for use of the  
tractor without the blade.



## Taarup rake put to work

With the recent purchase of a dedicated hay farm  
in the Manilla district Rupert Steel has purchased  
a Kverneland Taarup 9443 Single Rotor Hay Rake  
to suit his 4m cut New Holland 1431 Mower  
Conditioner. The Taarup 9443 features an oil bath  
rotor gearbox, full walking beam undercarriage for  
excellent ground following to reduce rotor contact  
with the ground.

The in field start up and installation was conducted  
by Goodwin Kenny Salesman, Tony Housden, and  
Rupert Steel is pictured with the rake doing a great job in a very heavy oats crop.



## McHale added to contracting plant

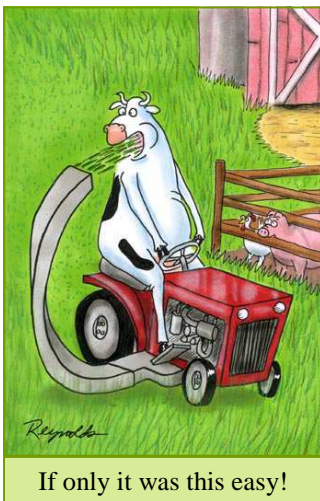
Matthew Burgess of Timbumburi has purchased  
a new McHale 991BE Round Bale Wrapper to  
replace his older 3pl unit. The fully automatic  
991BE will make operations quicker and quieter  
for wrapping their own silage and for contracting  
customers. The McHale 991BE is a premium  
wrapper, with ease of operation as the main  
benefit, as well as features like film break  
sensors, end tip and auto load adding to the  
functionality of the machine. Pictured at  
delivery is Matthew with his father, Garry Burgess.



## Rotary Rake replaces Rollabar

In the quest to streamline his small hay making operation  
even further, Maurice Mondolo has upgraded from his  
New Holland Rollabar Rake to a new Farmliner 350-9 Single  
Rotary Rake. This rake is a quality built rake ideal for the hay  
grower with smaller areas yet still wanting the real benefits of  
speed and quality of raking that only a rotary rake can offer.  
Maurice is pictured with the new Farmliner 350-9 Rake and  
his trusty helper.

Goodwin Kenny currently have SIP 360/10 Rotary  
Rakes in stock. These have a 3.6 metre raking width.



If only it was this easy!



BALEFEEDERS >

BALEHANDLERS >

SPRAYERS >

**Chainless X5000** The top of the  
range trailed Chainless balefeeder,  
self-loading, suitable for feeding  
out any bale, round or square, and it  
maximises feed use. The Chainless  
X5000 carries 2 bales at a time and  
is designed for medium to large operations feeding out  
800+ bales per year. **In stock at Tamworth now.**

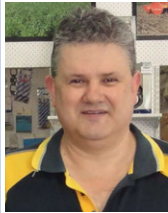




# GOODWIN KENNY

Tractor and Farm Machinery  
Dealers since 1962.

**For all your Spare  
Parts and great  
service from our  
experienced team**



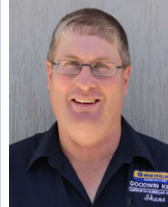
**David Hartmann**  
Tamworth

Over 7 years with  
Goodwin Kenny. Over 35  
years in Ag industry.  
Experienced with  
New Holland, Case, Ford,  
John Shearer & Silvan.



**Peter Mackay**  
Tamworth

Over 7 years with  
Goodwin Kenny. Many  
years in Council & Private  
Business. Experienced with  
New Holland, Fiat, Ford,  
John Shearer & Silvan.



**Shane Bridges**  
Tamworth

Newest member - Goodwin  
Kenny team. Over 20 years  
in Ag Industry.  
Experienced with Case,  
John Shearer, Gyril, Silvan,  
Points and discs.



**Mark Kenny**  
Gunnedah

Over 36 years with  
Goodwin Kenny.  
Experienced with New  
Holland, Versatile, Fiat,  
Simplicity, Gyril,  
Connor Shea, John Shearer.



**Ken Mack**  
Gunnedah

Nearly 15 years with  
Goodwin Kenny experienced  
with New Holland, Gyril,  
John Shearer, Howard,  
Morris, Silvan & Simplicity.



**Keith McPhie**  
Armidale

Over 13 years with  
Goodwin Kenny.  
At Armidale - a wide range  
of parts: Filters, Oils, Twine,  
Slasher Blades, Bolts & Nuts  
Points, BareCo, Silvan, SXM

**\*AGPOINT \*BARECO \*BOGBALLE  
\*CHALLENGE \*DAVEY AFM \*DAVIMAC  
\*GREAT WESTERN TILLAGE \*GYRAL  
\*HUSTLER \*JANKE \*JARRETT \*JAYLOR  
\*McHALE \*MURRAY HARROWS  
\*MORRIS \*NEW HOLLAND \*SILVAN  
\*JOHN SHEARER \*SIMPLICITY \*SIP  
\*SXM \*SUPERIOR \*TAARUP \*VICON**

246 Bridge St. **TAMWORTH**  
(02) 6765 5244  
42 Mullaley Rd. **GUNNEDAH**  
(02) 6742 5777  
139 Miller St.  
**ARMIDALE**  
(02) 6772 8124  
**www.goodwinkenny.com.au**



## TWINE and NET

Part No. 73322219	Small Square Twine 4480 metre	\$82.47 inc GST (YELLOW)
Part No. 87463635	Small Square Twine 4000 metre	\$105.24 inc GST (ORANGE)
Part No. 73322218	Large Square Twine 2200 metre	\$108.03 inc GST (YELLOW)
Part No. 87463634	Large Square Twine 2200 metre	\$109.32 inc GST (ORANGE)
Part No. 73322220	Round Baler Twine 9200 metre	\$70.52 inc GST (YELLOW)
Part No. 87463636	Round Baler Twine 9000 metre	\$92.92 inc GST (ORANGE)
Part No. 73322221	Q-Net 3300 metre x 1.23 metre	\$451.77 inc GST
Part No. 73322131	INFINET 3600 metre x 1.23 metre	\$609.53 inc GST
Part No. 73340502	BLACK NET 1500 metre x 1.2 metre	\$393.21 inc GST

## New Holland Hay Moisture Tester



DHT-1 18" Probe  
Hay Moisture Tester  
Direct readout for %  
moisture and  
temperature

Part No: FM07100DS  
\$372.10 inc GST



## Fuchs Renolit EP 00 - 20L "Self Levelling" Grease

Industrial grease with extreme  
pressure additives for severe  
service and high load  
applications, recommended for  
lubrication of plain and roller  
bearings, open and closed gear  
boxes and in centralised lubrication systems  
especially where good pumpability is required.

Part No: 87439084 \$188.55 inc GST



## Tapex Triowrap

Triowrap is a  
high performance  
multi-layered  
silage film  
formulated to  
withstand our harsh  
climatic conditions.

Part No: TRIOG750  
\$162.29 inc GST



## Hay & Silage Improver

By creating lactic acid  
more rapidly, more energy  
and protein is preserved in  
hay and silage for increased  
milk and meat production.  
Available in 20 Litre Drum.

*We buy directly from the  
Importer - Saving you \$\$\$*

Part No: HY-SI20 \$324.50 inc GST



## New Holland Ad Blue 20 Litre With Pourer



- Approved Adblue/  
DEF for your  
New Holland Tractor
- Free from impurities
- Environmentally  
friendly

Part No: 73322322  
\$40.74 inc GST



**Perfect  
gift ideas**  
**New Holland Toys**  
Call in & browse  
through the catalogue

## Silvan 400 Litre DieselPro - Diesel Transfer Unit

- Tank bottom inserts for bolt down mounting
- Lockable pump cover & filling cap • Baffled Tank
- 5m hose & auto shut-off gun • 45L/min Piusi Pump

Part No: SQDN400L-X1

**\$1,490.00 inc GST**



## Silvan Reel Tuff 12 Volt Heavy Duty Remote Reel

The professional tool for convenience, ideal for  
contract or farm spraying. This reel can be used  
for road side spraying, through undulating scrub,  
poultry sheds or glass houses.

No belts, chains or sprockets to maintain.

Optional bracket for  
3PL mounting

Part No: 147R10012T

**\$4,169.00 inc GST**

Frequency hopping  
improves reliability  
to work around  
interference

Neatly contained  
direct drive gearbox  
is maintenance free

Heavy gauge hot  
dip galvanised steel  
for longer  
working life



Fitted with  
Snap-Lock for neat  
spray gun storage  
or easy changeover

**OPEN SATURDAY MORNINGS - Tamworth Branch from 9am to 12pm. Gunnedah Branch from 8:30am to 11:30am.**



## MONTHLY WINNERS

Congratulations to our New Holland Cap Winners:

PA & MR Hearn - Colly Blue, RE & GE Bomford - Barraba  
M & T Gooch - Dungowan

This month we have 3 **NEW HOLLAND Caps** to give away - simply return your payment by Wednesday 25th November, 2015

to go into the draw. We would also remind customers that we accept Visa & MasterCard over the phone & Debit cards may be used at all our Branches.

All payments by these methods are included in the monthly draw.

Electronic/Internet Payments on the last day of the month cannot be allocated until the next day - it would assist us greatly if payments could be made prior to the last day of the month to allow receipting and allocation to accounts prior to Month end.....thank you.

For Customers that use Internet Banking, our bank account details are:

**Commonwealth Bank**

**BSB: 062 602 Account Number 00 272 029**

**Please use your account number, name or invoice number as a reference.**



## JOKE OF THE MONTH

### A testament to Man's Creativity

Today my wife said. "Honey, fix that gutter downspout"

Well, as you all know, I'm retired. I invited some of my buddies over.

One brought his welder.

Took us about 4 hours, and 30 beers, but we got the downspout fixed and my welder buddy gave it an artistic flair.

Wife is speechless...

**I can't wait for it to rain again!!**



**Just to keep you up to date:** Last month I reported that one of our customers was complaining because he was gaining weight as he was using the chocolate recipes that were appearing in the Newsletter. He called in last week on my Birthday to find us eating a delicious Carrot Cake, Chocolate Slice and other yummy things. We did share with him and he was wondering what was the recipe for this month and I told him I have found a Recipe for Oreo Chocolate Slice - but as I have not made that yet and it needs to be "taste tested" before sharing - I thought that I would share with you my Bundy Rum Ball Recipe which is a proven winner with the staff at Goodwin Kenny and not just at Christmas, they seem to like them all year round if I make them.

### BUNDY RUM BALLS

Ingredients: 10 Weet Bix - shredded in a processor, 1/2 cup coconut, 3 tablespoons Cocoa, 1 x 400gm tin Condensed Milk, 4 Tablespoons Bundy Rum, Chocolate Sprinkles to coat rum balls.

Combine all ingredients - check the consistency for rolling into balls - add more coconut if necessary. Roll into balls and coat with chocolate sprinkles. This Recipe should make about 30 Rum Balls.



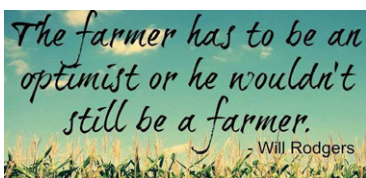
On October 24th the Tamworth Kangaroos AFL Club held their Presentation Night at the Courthouse Hotel. Goodwin Kenny has been a sponsor of the Roos for 12 years and I have watched the club grow and watched some of the younger players

"grow up". While AFL has a small following in Tamworth this club always has great spirit and fields a team with some good success over the years. This year the Roos made it to the Final and were narrowly beaten by Armidale Nomads. This good result has spurred a few of the older players on for another year - so they are looking to go one better in 2016 and will start training this month for next season.

Some of the winners on the night were:

1. Club Person of the Year - Amy Johnson and Ben Mitchell - joint winners.
2. Best & Fairest Player - Matt Hodge - his award accepted by his partner Sarah Allott as Matt was away driving a header, presented by Matt Wilson, Courthouse Hotel - Sponsor.
3. Runner-up Best & Fairest - Dan Leon, presented by Matt Wilson
4. Highest Goal Scorer - Dan Overem, presenter Tony Bishop (Coach)
5. Best Back - Dan Johnson, presented by Tony Bishop (Coach)
6. Player's Player - Brad Rees, presenter Shane Douglas (Past President)
7. Rising Star - Troy Osborne, presented by Susan Goodwin
8. Most Improved - Zeb Taylor, presented by Susan Goodwin

**My congratulations to the Roos and thanks for an enjoyable evening.**



Words of wisdom for this month....

And how true is this? I have always been a "Glass is half full" type of person - it is always better to concentrate on the positives in life. The recent rain has been most welcome even though it may have slowed down harvest or haymaking, so I hope you are getting some rain where you are.

I know the rain has been great for the garden and the lawn is growing madly - the positive here is the exercise for the person who gets to mow the lawn (and the cool beer after)!

...Susan Goodwin





# GOODWIN KENNY

Tamworth • Gunnedah • Armidale



USED EQUIPMENT  
NOVEMBER 2015



246 BRIDGE STREET, TAMWORTH - 02 6765 5244

TONY HOUSDEN: 0437 337 131



**NEW HOLLAND TD70D**  
2 Wheel Drive, A/C Cab, 3pl,  
2 Remotes, 20 x 12 Trans,  
8 Creeper gears, Mechanical  
Forward/Reverse Shuttle  
**\$25,000.00 inc GST**



**NEW HOLLAND T6030**  
115 HP, 6 Cylinder, Common  
Rail, Range Command Semi  
Powershift, 18 Forward x  
6 Reverse Gears, Challenge  
L3900 FEL. With 4 in 1 bucket  
**\$99,000.00 inc GST**... Standard  
bucket **\$95,000.00 inc GST**



**NEW HOLLAND TM190**  
190HP, FWA, Cab, 18 Speed  
Powershift, Super Steer Front  
Axle, 4 Remotes, 1900 hours.  
**\$99,000.00 inc GST**



**NEW HOLLAND BR740A**  
Round Baler.  
This baler has had an extensive  
overhaul. New belts, chains &  
sprockets as required.  
Workshop checked by Merv  
**SPECIAL \$30,000.00 inc GST**



**NEW HOLLAND 658**  
Round Baler  
Silage Special, Net with  
Bale Slice, Bale count  
only 13,500 bales,  
Serviced regularly, 1999  
model, good belts.  
**\$19,800.00 inc GST**



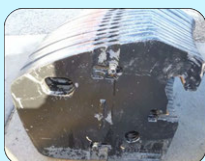
**KRONE VP 1500**  
Round Baler  
Slat baler with cutters,  
Only 8900 bales, Silage  
ready, Net Wrap, Very good  
condition, Just traded and  
being Workshop checked.  
**\$19,800.00 inc GST**

## Trades Coming In:

- **RB454 Round Case Baler**
- **New Holland 1411 Mower Conditioner**

## CONSIGNMENT MACHINES TAMWORTH

**NEW HOLLAND  
FRONT WEIGHT**  
off TG285, suits T8,  
T8000, other TG's  
**\$3,000.00 inc GST  
OR OFFER**



## CONNOR SHEA (SERIES 2) LINKAGE TINE DRILL

7'3" (2.2m)  
Sowing width  
14 tine  
6" Spacing  
Narrow Points.  
**\$6,600.00 inc GST**



## SPRAYRITE CAMPO 3200

Trimble Field IQ controller ready to plug into FM750  
guidance unit. Full hydraulics,  
electric over hydraulic controls  
for all boom functions, high lift  
& folds forward for storage/  
transport. Sprayed approx.  
250ha. **\$49,500.00 inc GST**



## NEW - Machines In Stock



Hustler Chainless X5000 Bale Feeder



Hustler SL350  
Chain 3pl Feeder



## ALCE 1950 Mulcher

Rear wheels & wear sheet - List Price: \$11,698.00

**SPECIAL**

**\$9,680.00  
inc GST**



**bogballe**



For more information  
about these machines  
call Tony Housden at  
Tamworth on 6765 5244  
or 0437 337131

## We are the authorised dealers for:

AGPOINT - BARE-CO - BOGBALLE- CHALLENGE - DAVEY AFM - DAVIMAC - GREAT WESTERN TILLAGE - GYRAL -  
HUSTLER - JANKE - JARRETT - JAYLOR - K-LINE - McHALE - MORRIS - NEW HOLLAND - SILVAN -  
JOHN SHEARER - SIMPLICITY AUSTRALIA - SIP - SOUTHERN CROSS AG MACHINERY - SUPERIOR - TAARUP - VICON



# GOODWIN KENNY

Tamworth • Gunnedah • Armidale



USED EQUIPMENT  
NOVEMBER 2015



42 MULLALEY ROAD, GUNNEDAH - 02 6742 5777 PETER KENNY: 6742 4502 A/H 0427 688 454



TRADE COMING IN

**NEW HOLLAND T6010**  
DELTA, 2010 model,  
102 Horsepower, Low Hours  
Challenge AP38 Plus FEL with  
2160mm 4 in 1 Bucket



**NEW HOLLAND TM190**  
190HP, FWA, Cab, 4 Remotes,  
18 speed Power Shift Trans,  
Super Steer front axle.

**\$99,000.00 inc GST**



**CASE LBX332**  
Large Square Baler, 8x3x3,  
Rotor Cutter Model, Single Axle.  
Well maintained Baler.

**\$55,000.00 inc GST**



**NEW HOLLAND BR740A**  
Round Baler, SuperFeed,  
2007, Net/Twine, Endless  
belts, 4794 Bales.

**\$37,400.00 inc GST**



**NEW HOLLAND TR70**  
22' open front & Comb Trailer  
Twin Rotor Combine

**\$\$ HEADER SALE**



**NEW HOLLAND TR85**  
Twin Rotor Harvester,  
H/Static Drive, 1992 with  
NH705 25' Bat Reel

**\$\$ HEADER SALE**



**NEW HOLLAND TR89**  
Twin Rotor, H/Static Drive,  
Straw Chopper, 72C 30' O/F  
Bat Reel and Comb Trailer

**\$\$ HEADER SALE**



**NEW HOLLAND TR98**  
Combine Harvester with  
NH971 Bat Reel Front &

**\$\$ HEADER SALE**



**GYRAL TG/SC PLANTER** - 36ft, Hydraulic  
Blower, 2 x 1 Ton Bins **\$17,500.00 inc GST**

## NEW NEW HOLLAND IRRIGATION ENGINE

Iveco 8.7 Litre Motor, 383Hp  
@ 2100 RPM

**SPECIAL \$51,700.00 inc GST**



## CONSIGNMENT MACHINE GUNNEDAH

### K-LINE 2935DDT SPEED TILLER

3.5 Metre Trailing Speed Tiller with  
KVA Agriculture Model PS250  
Electric Air Seeder Mounted.

Machine has  
never been  
used.

**\$59,400.00  
inc GST**



## CHALLENGE BUCKET

2400mm, STD Earth,  
21 Series lugs

**\$2,500.00 inc GST**



## NEW SUPER ALCE 3200 MULCHER

Dual wheels &  
wear sheet

List Price: 23,092.00

**SPECIAL  
\$21,000.00 inc GST**

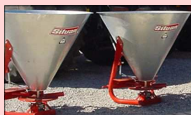


139 Miller Street,  
ARMIDALE -  
02 67728124  
Keith McPhie

**NEW Silvan 3pl**  
Pasturepak Sprayer



**NEW Silvan 338 litre Spreaders**



## CONSIGNMENT MACHINES ARMIDALE

### SILVAN 200 LITRE AIRBLAST SPRAYER

Never had chemical in it, used on organic  
grapes. Very tidy, only 50 hours use.

**\$3,300.00 inc GST**



### SILVAN 1000 LITRE TANK

Water Tank on Heavy Duty Trailer,  
Honda Motor on Water Pump, Hose  
Reel, Tool Box, 2 Hose Outlets.

**\$4,000.00 inc GST**



Carryalls, Drag Harrows, Slashers,  
Pipe Layers & Rippers



### CASE MXU110

116HP, FWA, Cab,  
16x16 Semi Powershift Transmission,  
with new Challenge Front End Loader  
and 4 in 1 Bucket.

**SPECIAL \$79,000.00 inc GST**



### YEOMANS PLOUGH

7 Tyne Chisel Plough with  
Shank Pot Seeder on 7 Tynes.

**\$4,000.00 inc GST**



For more photos visit: [www.goodwinkenny.com.au](http://www.goodwinkenny.com.au)