



Spotted at Agquip - delivered to Coonabarabran

Steve and Virginia Thomas run a cattle property at Coonabarabran. At Ag-Quip this year Steve was on the lookout for a reliable, basic tractor for his property. Steve settled on a New Holland TD5.110 Tractor with a Challenge AP38 Loader and 4in1 bucket. This machine will be used in hay stacking/loading and feeding of his cattle. The tractor's first job was to repair some underground water pipes and Steve was keen to put the machine into operation. Pictured (right)



are Steve and Virginia at delivery of their new tractor.

TT4.55 to Armidale

After many years of reliable service from his old Fiat tractor, Brian Menzies has decided it was time to upgrade to a new machine on his Dangars Falls property. The New Holland TT4.55 4WD with a Challenge AP30 front end loader and 4in1 bucket will make those tasks around the farm just that bit easier. Brian was impressed with the true flat floor, the Synchro shuttle shift for Forward/Reverse changes & is looking forward to being able to grab things with the 4in1 bucket. Pictured (left) is Tamworth Salesman Tony Housden with Brian at installation.



New Holland H7230 to Manilla

After a breakdown with the old New Holland 1411 Mower Conditioner that Mal Carter and Mick Osborne bought with their new farm, the decision was made to upgrade to a new machine so that hay production could continue uninterrupted and with more reliability in the longer term. Mal and Mick made the decision to purchase a new New Holland H7230 with the 2 point hitch for increased manoeuvrability, commonality with their old machine and reliability of the machine and the service back up from Goodwin Kenny. Pictured at in-field start up of the new machine is their operator Tony Greenslade.



Making Hay again

After a period of time concentrating on other business ventures Wayne Simmons of ABC Ezy Lucerne and Cartage has returned to making hay himself. Having sold some of his equipment Wayne now had to buy a new Mower Conditioner. His choice was simple and he settled on a New Holland H7230 with 2 point hitch, which is the updated version of the Case branded New Holland 1411 he previously owned. With only minor upgrades to the machine, the start up and operating of the machine will be very familiar to him. Wayne is pictured at left at the delivery and installation of his new mower conditioner.

Busy baling at Manilla

As part of Don and Shirlyn Howard's busy hay contracting business their previous Case badged New Holland baler had performed well. The decision to upgrade this baler now and keep this essential part of their operation up-to-date and reliable led them to the New Holland RB150 Superfeed Baler, with its increased density & faster throughput. Don and Shirlyn had prepared some of the biggest windrows our Hay Service Technician Merv Leard had seen and all were very impressed with how the new RB150 baler devoured the hay. When it came to a photo - Don & Shirlyn were a bit camera shy!



Front Linkage and PTO plus Horsepower prove ideal for the job

Rob Moore & Lisa Rochfort, Woolcott Group, Manilla were in need of another 230hp tractor for their large hay production facility. With a couple of specific requirements for the tractor, mainly front linkage and PTO to run front mower conditioners, rear hydraulic trailer brakes with positive engine braking from CVT to pull a large square bale accumulator and stacker, the New Holland T7.270 Auto Command was chosen based on suitability to task, quick availability and very competitive price. The New Holland T7.270 Auto Command has 228 base horsepower coupled to a CVT transmission with Sidewinder II armrest and touch screen functionality. The tractor is essentially operated by one hand on the control stick making operation easy and accurate. Front axle suspension, cab suspension and deluxe auto adjust air suspension seat complete the comfort package for an operator spending long hours in the tractor. Pictured are the Moore's farm management and operation team, Matthew and Alex Hall with their parents Sharon and Brian Hall.



GOODWIN KENNY

Tractor and Farm Machinery
Dealers since 1962.

For all your Scheduled Services and Repair work on New Holland, Fiat, Ford, Case & Versatile Tractors, Balers and Haymaking equipment, Silvan Sprayers and all slashers - call our experienced team.

ARC RTA AIRCONDITIONING LICENCE AU11959



Ken Hatton
Tamworth

Service Manager at Tamworth. Over 10 years with Goodwin Kenny. Experienced with New Holland, Fiat, Case & Ford tractors & Air Cond.



Merv Leard
Tamworth

Over 19 years with Goodwin Kenny. Specialist with New Holland Balers, mower conditioners and haymaking.



Levi Alley
Tamworth

Commenced training as Apprentice in 2005 & now has over 10 years with Goodwin Kenny. All Tractors and licenced for Air Conditioning.



Con Smit
Tamworth

Over 31 years with Goodwin Kenny. Has worked on many Fiat tractors and crawlers and is now passing on his knowledge to the others.



Nathan Keel
Tamworth

Commenced Mechanical Apprenticeship in 2014. Working with Merv to acquire knowledge of Balers & Haymaking gear.



Lachie McARTHUR
Gunnedah

4th Year Apprentice - commenced in 2012. Has an Air Conditioning Trainee Licence.

New SIP 360 for Kansas Livestock

After a couple of seasons of raking slowly with old New Holland Rollabar rakes that are starting to become unreliable, Rob Crosby from Kansas Livestock has upgraded to a new SIP 360/10 Single rotary rake. Having used big twin rotary rakes on his other property Rob is familiar with all the advantages of speed, windrow preparation and decreased drying time. The SIP 360/10 has been upgraded again for 2015 and is a very well built machine that is robust and operator friendly. Pictured at start-up are Rob Crosby and Goodwin Kenny Apprentice Nathan Keel.



Barry Gilbert was looking to upgrade a couple of machines on his Nemingha farm to make things a little easier. After looking at different slashers, Barry decided that he liked the new Jarrett RB6-75 slasher with 6' cut and a true 75hp gearbox and safety clutch. The other real benefit of the new Jarrett Redback range is the totally clean top that is fully hot dip galvanised. The top will not hold water and is very easy to blow or sweep off.

Barry has also replaced an old fertiliser spreader he picked up at a clearing sale years ago with a Silvan SX500 galvanised cone spreader.



Jarrett slashers and Silvan SX500 Spreaders are in stock now.



New Holland 1411 Disc Mower Drive Shaft Coming Loose

While servicing the New Holland 1411 disc mowers we have found that from serial no: Y6B160626 onwards these units can experience the PTO drive shaft coming loose on the gearbox input shaft.

The PTO shaft with the slip clutch fitted as part of the shaft (1) has a single cotter pin/bolt in the hub (3) which locks the shaft assembly onto the gearbox (2) input shaft (4). We have found that in some cases the cotter pin/bolt is working loose and allowing the hub (3) to move on the shaft (4) and cause excessive wear to the splines.



As a result we recommend to owners of these units that they check the cotter/pin bolt for any movement on a regular basis and replace with a new pin (no 86625865) if necessary. If the splines have worn they will need to be replaced to prevent PTO shaft/gearbox failure.

Are you looking for parts for older balers or cheaper parts? We have some used and "new" old stock parts for:

New Holland
317 Small
Square
Baler,
New
Holland
Super
417 Baler,



New Holland BB940AP
Big Square Baler,
SIP 470 Rake

Call Tamworth
Spare Parts 67655244

CHRISTMAS / NEW YEAR TRADING HOURS

Monday	21st December 2015	8am to 5pm
Tuesday	22nd December 2015	8am to 5pm
Wednesday	23rd December 2015	8am to 5pm
Thursday	24th December 2015	8am to 5pm

Friday - Christmas Day 25th December 2015 CLOSED
Saturday - Boxing Day 26th December 2015 CLOSED
Sunday 27th December 2015 CLOSED
Monday 28th December 2015 CLOSED

Tuesday	29th December 2015	8am to 5pm
Wednesday	30th December 2015	8am to 5pm
Thursday	31st December 2015	8am to 5pm

Friday - New Years Day 1st January 2016 CLOSED
Saturday 2nd January 2016 CLOSED
Sunday 3rd January 2016 CLOSED

Monday	4th January 2016	8am to 5pm
--------	------------------	------------



BALEFEEDERS >

BALEHANDLERS >

SPRAYERS >



Chainless X5000 The top of the range trailed Chainless balefeeder, self-loading, suitable for feeding out any bale, round or square, and it maximises feed use. The Chainless X5000 carries 2 bales at a time and is designed for medium to large operations feeding out 800+ bales per year.

In stock at Tamworth now.



GOODWIN KENNY

Tractor and Farm Machinery
Dealers since 1962.

**For all your Spare
Parts and great
service from our
experienced team**



David Hartmann
Tamworth

Over 8 years with Goodwin Kenny. Over 35 years in Ag industry. Experienced with New Holland, Case, Ford, John Shearer & Silvan.



Peter Mackay
Tamworth

Over 8 years with Goodwin Kenny. Many years in Council & Private Business. Experienced with New Holland, Fiat, Ford, John Shearer & Silvan.



Shane Bridges
Tamworth

Newest member - Goodwin Kenny team. Over 20 years in Ag Industry. Experienced with Case, John Shearer, Gyril, Silvan, Points and discs.



Mark Kenny
Gunnedah

Over 36 years with Goodwin Kenny. Experienced with New Holland, Versatile, Fiat, Simplicity, Gyril, Connor Shea, John Shearer.



Ken Mack
Gunnedah

Nearly 15 years with Goodwin Kenny experienced with New Holland, Gyril, John Shearer, Howard, Morris, Silvan & Simplicity.



Keith McPhie
Armidale

Over 13 years with Goodwin Kenny. At Armidale - a wide range of parts: Filters, Oils, Twine, Slasher Blades, Bolts & Nuts Points, BareCo, Silvan, SXM

***AGPOINT *BARECO *BOGBALLE
*CHALLENGE *DAVEY AFM *DAVIMAC
*GREAT WESTERN TILLAGE *GYRAL
*HUSTLER *JANKE *JARRETT *JAYLOR
*McHALE *MURRAY HARROWS
*NEW HOLLAND *SILVAN
*JOHN SHEARER *SIMPLICITY *SIP
*SXM *SUPERIOR *TAARUP *VICON**

246 Bridge St. **TAMWORTH**
(02) 6765 5244
42 Mullaey Rd. **GUNNEDAH**
(02) 6742 5777
139 Miller St.
ARMIDALE
(02) 6772 8124
www.goodwinkenny.com.au



RIDE-ON TRACTORS, ATTACHMENTS and SCALE MODEL TOYS

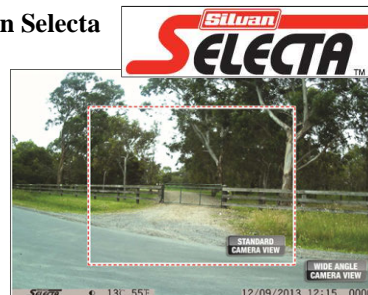
Call in & browse through the New Holland Toy Catalogue for the full range



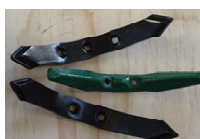
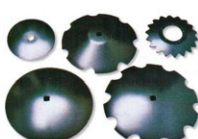
SECURE your PROPERTY and HOME with a Silvan Selecta Wide Angle Motion Activated 12MP Security Camera



- 120° wide angle lens captures a larger area compared to standard Camera
- Ideal for close-in targets or objects in peripheral vision
- Comes with a 16GB SD Card
- Long battery life - standby up to 9 months
- Day and night use
- IP54 water proof rating



- Motion activated - records videos and photos **Part No: SECURE120 \$395.00 inc GST**
- Standard 52° View Motion Activated 12MP Security Camera **Part No: SECURE01 \$299.00 inc GST**
- Adjustable wall mounting bracket to suit Motion Activated Security Camera (Mounting screws included) **Part No: SECURE02 \$8.30 inc GST**



POINTS AND DISCS IN STOCK

Scarifier, Trashworker and Combine Points & Discs to suit Case, Chamberlain, Connor Shea, Davimac, Gyril, Jarrett, IH, John Shearer, Massey & other tillage machines.



DAVIMAC
MANUFACTURING



Great Western Tillage



WE ARE BARE-CO STOCKIST

Talk to Spare Parts about getting a new Bare-Co ROPS and Canopy for your tractor.



TWINE and NET

Part No. 73322219	Small Square Twine 4480 metre	\$82.47 inc GST (YELLOW)
Part No. 87463635	Small Square Twine 4000 metre	\$105.24 inc GST (ORANGE)
Part No. 73322218	Large Square Twine 2200 metre	\$108.03 inc GST (YELLOW)
Part No. 87463634	Large Square Twine 2200 metre	\$109.32 inc GST (ORANGE)
Part No. 73322220	Round Baler Twine 9200 metre	\$70.52 inc GST (YELLOW)
Part No. 87463636	Round Baler Twine 9000 metre	\$92.92 inc GST (ORANGE)
Part No. 73322221	Q-Net 3300 metre x 1.23 metre	\$451.77 inc GST
Part No. 73322131	INFINET 3600 metre x 1.23 metre	\$609.53 inc GST
Part No. 73340502	BLACK NET 1500 metre x 1.2 metre	\$393.21 inc GST

OPEN SATURDAY MORNINGS - Tamworth Branch from 9am to 12pm. Gunnedah Branch from 8:30am to 11:30am.

MONTHLY WINNERS Congratulations to our New Holland Cap Winners:

Millfield Pastoral - Narrabri, KR & JF Tongue - Loomberah, TJ & JF Barwick - Tamworth

This month we have 3 **NEW HOLLAND Plush Toy Tractors** to give away - simply return your payment by **Tuesday 22nd, December 2015** to go into the draw. We would also remind customers that we accept

Visa & MasterCard over the phone & Debit cards may be used at all our Branches.

All payments by these methods are included in the monthly draw. Electronic/Internet Payments on the last day of the month cannot be allocated until the next day - it would assist us greatly if payments could be made prior to the last day of the month to allow receipting and allocation to accounts prior to Month end.....thank you.



For Internet Banking, our bank account details are: **Commonwealth Bank BSB: 062 602 Account Number 00 272 029**
Please use your account number, name or invoice number as a reference.

Just to keep you up to date:

November was a busy month with a few early starts. Up early to watch the Rugby World Cup and not the result we all wanted! Then up early on Melbourne Cup Day to attend the Tamworth Business Chamber Breakfast where I was invited to speak and be part of a panel of Tamworth Business Chamber Award Winners.

The Breakfast at AELEC was delicious and the Chamber also organised our own "mock up" Melbourne Cup in the arena with all proceeds from the betting going to charity.

As I was already "dressed up" for the day I took the opportunity to head to the Tamworth Jockey Club for lunch with a few friends (Cath Neill, Yvonne Richards and Jeanette Melville). Unfortunately there were no races on the Tamworth track due to rain but the company was great and I managed to back a place in the Cup.



Tamworth Business Chamber Breakfast at AELEC



Melbourne Cup Day at Tamworth Jockey Club



It was good to see a few of our customers there at the Tamworth Jockey Club taking the day off and enjoying a few cool drinks too! November is also a busy month for Birthdays at Goodwin Kenny - Tony, Jamie and Kym all celebrated Birthdays so I was busy making Bundy Rum Balls, Oreo Bars (Recipe below) and Blondies (White Chocolate Brownies) for them.

Jamie also received some Christmas trinkets - she loves Christmas and has been busy putting up some decorations and trying to get the staff (and me) into the spirit - it is a difficult job especially when we are all busy and working in the heat.

....time for the Christmas Jokes !



No Bake Oreo Bars (Makes 16)

Crust: 24 Oreos (or any other chocolate sandwich cookie), 4 Tablespoons Butter - soft or melted
To make the crust, pulse the biscuits in a processor or place in zip-lock bag and smash with a rolling pin. Combine biscuits with butter, you can add a tablespoon of water to soften the mixture if necessary.

Press into a slice tin (9" square) that has been lined with baking paper and put in refrigerator to set.

Filling: 250 gm White Chocolate, chopped 150 gm Cream Cheese, at room temperature
12 Oreos, roughly chopped

Melt the white chocolate either over a double boiler or in the Microwave for 15 second increments, stirring in between. Beat the Cream Cheese and gradually add in the white chocolate until it forms a smooth mixture. Fold in the 12 roughly chopped Oreos. Spread the mixture over the base.

Topping: 6 Oreos, Roughly chopped

Optional - 100gm Dark Chocolate, Melted

Spread the 6 roughly chopped Oreos over filling and chill for 2 hours. If desired - Before cutting, drizzle the melted Dark Chocolate.



Tractor Sales Prospecting 101

While his mother was putting some parts in the car I thought I would take young Hugh Swain for a little walk around the machinery on the front lot. These photos were taken (without my knowledge) to tease me about wanting to be a grandmother, but in all honesty - you can never start too early on future prospects for Tractor Sales. Hugh is the son of one of our former Mechanics, Peter Swain and his wife, Pip. When Hugh was a baby Peter and Pip brought him in to see me and it is lovely to see him growing up. I noticed on Facebook some photos that Pip posted of Hugh spending his second Birthday on the header (a New Holland) with Dad and the caption "this probably won't be the last birthday you spend on a header!" Hugh and I looked over the tractors and apparently Hugh was talking about tractors all the way home to Walgett. I hope Santa brings Hugh a New Holland Ride-on Tractor for Christmas!!



*A thought for ChristmasThe best gifts can't be often packed inside a box. How can you wrap shared laughter and tears or talks that run into hours? They can only be wrapped and treasured inside your heart. Merry Christmas & Happy New Year.
.... Susan Goodwin*

GOODWIN KENNY

Tamworth • Gunnedah • Armidale



USED EQUIPMENT
DECEMBER 2015



246 BRIDGE STREET, TAMWORTH - 02 6765 5244

TONY HOUSDEN: 0437 337 131



NEW HOLLAND TD70D
2 Wheel Drive, A/C Cab, 3pl,
2 Remotes, 20 x 12 Trans,
8 Creeper gears, Mechanical
Forward/Reverse Shuttle
\$25,000.00 inc GST



NEW HOLLAND T6030
115 HP, 6 Cylinder, Common
Rail, Range Command Semi
Powershift, 18 Forward x
6 Reverse Gears, Challenge
L3900 FEL. With 4 in 1 bucket
\$99,000.00 inc GST... Standard
bucket **\$95,000.00 inc GST**



CASE RB454
Round Baler.
2009 Model, 14,500 Bales,
Well Maintained.
\$33,000.00 inc GST



NEW HOLLAND BR740A
Round Baler.
This baler has had an extensive
overhaul. New belts, chains &
sprockets as required.
Workshop checked by Merv
SPECIAL \$30,000.00 inc GST



NEW HOLLAND 658
Round Baler
Silage Special, Net with
Bale Slice, Bale count
only 13,500 bales,
Serviced regularly, 1999
model, good belts.



KRONE VP 1500
Round Baler
Slat baler with cutters,
Only 8900 bales, Silage
ready, Net Wrap, Very good
condition, Just traded and
being Workshop checked.

Trades Coming In:

• **New Holland 1411
Mower Conditioner**

CONSIGNMENT MACHINES TAMWORTH

NEW HOLLAND FRONT WEIGHT

off TG285, suits T8,
T8000, other TG's



CONNOR SHEA (SERIES 2) LINKAGE TINE DRILL

7'3" (2.2m)
Sowing width
14 tine
6" Spacing
Narrow Points.
\$6,600.00 inc GST



SPRAYRITE CAMPO 3200

Trimble Field IQ controller ready to plug into FM750
guidance unit. Full hydraulics,
electric over hydraulic controls
for all boom functions, high lift
& folds forward for storage/
transport. Sprayed approx.
250ha. **\$49,500.00 inc GST**



NEW - Machines In Stock



Hustler Chainless X5000 Bale Feeder



Hustler SL350
Chain 3pl Feeder



Silvan

ALCE 1950 Mulcher

Rear wheels & wear sheet - List Price: \$11,698.00

SPECIAL

**\$9,680.00
inc GST**



bogballe



For more information
about these machines
call Tony Housden at
Tamworth on 6765 5244
or 0437 337131

We are the authorised dealers for:

AGPOINT - BARE-CO - BOGBALLE - CHALLENGE - DAVEY AFM - DAVIMAC - GREAT WESTERN TILLAGE -
GYRAL - HUSTLER - JANKE - JARRETT - JAYLOR - K-LINE - McHALE - NEW HOLLAND - SILVAN -
JOHN SHEARER - SIMPLICITY AUSTRALIA - SIP - SOUTHERN CROSS AG MACHINERY - SUPERIOR - TAARUP - VICON

GOODWIN KENNY

Tamworth • Gunnedah • Armidale



USED EQUIPMENT
DECEMBER 2015



42 MULLALEY ROAD, GUNNEDAH - 02 6742 5777 PETER KENNY: 6742 4502 A/H 0427 688 454



TRADE COMING IN

NEW HOLLAND T6010
DELTA, 2010 model,
102 Horsepower, Low Hours
Challenge AP38 Plus FEL with
2160mm 4 in 1 Bucket



CASE LBX332
Large Square Baler, 8x3x3,
Rotor Cutter Model, Single Axle.
Well maintained Baler.
\$55,000.00 inc GST



NEW HOLLAND TR70
22' open front & Comb Trailer
Twin Rotor Combine
\$\$ HEADER SALE



NEW HOLLAND TR85
Twin Rotor Harvester,
H/Static Drive, 1992 with
NH705 25' Bat Reel
\$\$ HEADER SALE



NEW HOLLAND BR7400
Round Baler, SuperFeed,
2007, Net/Twine, Endless
belts, 4794 Bales.



**CONSIGNMENT MACHINE
GUNNEDAH**
K-LINE 2935DDT SPEED TILLER
3.5 Metre Trailing Speed Tiller
with KVA Agriculture Model
PS250 Electric Air Seeder Mounted.
Machine has never been used.
Was \$59,400.00 inc GST

SPECIAL PRICE
\$44,000.00 inc GST



NEW HOLLAND TR89
Twin Rotor, H/Static Drive,
Straw Chopper, 72C 30' O/F
Bat Reel and Comb Trailer
\$\$ HEADER SALE



NEW HOLLAND TR98
Combine Harvester with NH971
Bat Reel Front & Inverell
Welding Comb Trailer
\$\$ HEADER SALE



GYRAL TG/SC PLANTER
36ft, Hydraulic Blower,
2 x 1 Ton Bins

NEW NEW HOLLAND IRRIGATION ENGINE

Iveco 8.7 Litre Motor, 383Hp @ 2100 RPM

SPECIAL \$51,700.00 inc GST



CHALLENGE BUCKET

2400mm, STD Earth,
21 Series lugs

\$2,500.00 inc GST



NEW SUPER ALCE 3200 MULCHER

Dual wheels & wear sheet

List Price: 23,092.00

SPECIAL \$21,000.00 inc GST



139 Miller Street,
ARMIDALE -
02 67728124
Keith McPhie

NEW Silvan 3pl
Pasturepak Sprayer



NEW Silvan 338 litre Spreaders



CONSIGNMENT MACHINES ARMIDALE

SILVAN 200 LITRE AIRBLAST SPRAYER

Never had chemical in it, used on organic
grapes. Very tidy, only 50 hours use.

\$3,300.00 inc GST



SILVAN 1000 LITRE TANK

Water Tank on Heavy Duty Trailer,
Honda Motor on Water Pump, Hose
Reel, Tool Box, 2 Hose Outlets.

\$4,000.00 inc GST



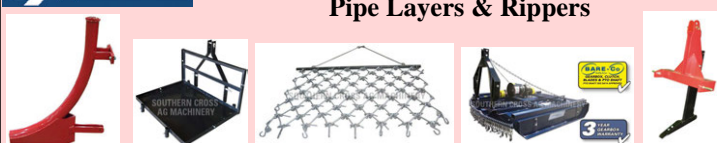
YEOMANS PLOUGH

7 Tyne Chisel Plough with
Shank Pot Seeder on 7 Tynes.

\$4,000.00 inc GST



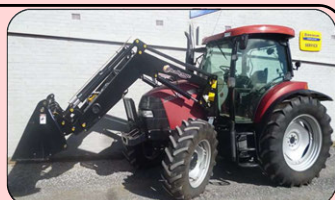
Carryalls, Drag Harrows, Slashers,
Pipe Layers & Rippers



CASE MXU110

116HP, FWA, Cab,
16x16 Semi Powershift Transmission,
with new Challenge Front End Loader
and 4 in 1 Bucket.

SPECIAL \$79,000.00 inc GST



For more photos visit: www.goodwinkenny.com.au