



Another New Holland tractor for Chris Burgess

Chris Burgess recently looked to upgrade his New Holland T6010 Tractor to a larger machine that can do a bit more of the heavier workload on his cattle property. Chris settled on a New Holland T6070, 140 HP Tractor with a Challenge/New Holland AP38 Front End Loader with a 4 in 1 Bucket. This tractor will be able to pull a larger combine come planting time as well as take care of cattle feeding with round bales and also fencing jobs around the farm. Picture shows operator Max Lees with Chris Burgess's new machine on delivery.



Long time customers chose T6070 tractor

The Picton Family of Curlewis have been long time customers of Goodwin Kenny going back to the 1970's when Kevin purchased his Massey Ferguson 542 Combine. Recently Warren was looking for a reliable tractor/loader combination and he looked around at Ag-Quip this year and decided that a New Holland T6070, 140 HP Tractor with a Challenge/New Holland AP38 Plus Front End Loader Bucket, Bull Blade and Hay Spike would be the ideal machine for him. Warren will use the machine on his cattle property at Curlewis for general feeding and clean up duties and he is pictured at left at the delivery and installation start-up of the tractor.



Inspect these Tractors at our Gunnedah branch

As the New Holland T6070 tractor has proved to be a popular choice for the Gunnedah area we now have one in stock at Gunnedah. This machine is 140 rated engine Horsepower and has proven to be a top seller for New Holland because of its versatility. Other features include 16x16 Electroshift transmission, 6.75 Litre 6 Cylinder Engine, Clutchless Shuttle, 2 Rear Remote Valves, 540/750/1000 RPM PTO Shiftable in Cab. The Deluxe, High Profile Cab has Loader View Panel, Comfort Ride Cab Suspension and Deluxe Air Suspension Seat. The tractor also has Terralock Traction Management.



Also in Gunnedah for you to inspect is the New Holland T8.410 Smart Trax. This machine has 340 rated engine HP with a maximum boosted HP of 409. The T8 has the Auto

Command (CVT) Transmission with Clutchless Power Shuttle, suitable for all types of farming operations, the rear 18" Smart Trax System fitted gives the operator positive soil contact at all times and is automatically tensioned for correct track tension and can be set from 80" to 152". Other Features include Terraglide Front Axle Suspension, 4 Electro Hydraulic Rear Remotes, 1000 RPM PTO, Front 3 Point Linkage, Rear 3 Point Linkage with 7,711kg lift, Deluxe Cab with Auto Comfort Seat and Sidewinder II Armrest fitted with Intelliview IV Monitor. This machine can also be fitted with a Wider 24" Track System. **Call in at Gunnedah and talk with Peter Kenny.**



New Holland BC5060 Baler and Muller Accumulator added to plant

Bill, Sue and Cameron Wilson of Retaru Pty Ltd had a significant number of small bales to be made to satisfy customer demand so they decided to get another New Holland Small Square Baler and Muller Accumulator to cope with the workload. This combination will also be a stand-by machine should their original New Holland BC5060 require any repairs. Having two identical machines makes it easy for operators swapping between machines and ensures that hay can still be produced. Pictured at delivery of the New Holland BC5060 Small Square Baler is Nathan Keel (Goodwin Kenny Technician) and Brad Howard (Retaru Pty Ltd).



We currently have two New Holland Small Square Balers in stock. A New Holland BC5060 at our Tamworth Branch and a New Holland BC5070 at our Gunnedah Branch. Call Tony Housden at Tamworth on 67655244 and Peter Kenny at Gunnedah on 67425777.

GOODWIN KENNY

Tractor and Farm Machinery
Dealers since 1962.

**For all your Scheduled
Services and Repair work
on New Holland, Fiat, Ford,
Case & Versatile Tractors,
Balers and
Haymaking equipment,
Silvan Sprayers and all
slashers - call our
experienced team.**

**ARC RTA AIRCONDITIONING
LICENCE AU11959**



Ken Hatton
Tamworth

Service Manager at
Tamworth. Over 10 years
with Goodwin Kenny.
Experienced with New
Holland, Fiat, Case &
Ford tractors & Air Cond.



Merv Leard
Tamworth

Over 19 years with
Goodwin Kenny.
Specialist with
New Holland Balers,
mower conditioners and
haymaking.



Levi Alley
Tamworth

Commenced training as
Apprentice in 2005 &
now has over 10 years
with Goodwin Kenny.
All Tractors and licenced
for Air Conditioning.



Con Smit
Tamworth

Over 31 years with
Goodwin Kenny. Has
worked on many Fiat
tractors and crawlers and
is now passing on his
knowledge to the others.



Nathan Keel
Tamworth

Commenced Mechanical
Apprenticeship in 2014.
Working with Merv to
acquire knowledge of
Balers & Haymaking gear.



Lachie McARTHUR
Gunnedah

4th Year Apprentice -
commenced in 2012.
Has an Air Conditioning
Trainee Licence.

Brett and Andrea chose a Silvan

Independence of operation has lead the Wardens to invest in a new Silvan 800 Litre Pasturepak 3 point linkage boom spray for their Bowling Alley Point property. The sprayer is matched, size wise, to their New Holland T5050 100hp tractor. The 8 metre boom on the sprayer has been upgraded to include a double sided fence-line nozzle setup that can be adjusted to suit either spraying fence-lines or contour banks either separately or running with the main boom. The Pasturepak comes standard with a 20m hose reel and Triam 49 spot spray gun which is useful for around trees and sheds etc. where the boom cannot reach. Pictured at delivery and start-up is Brett Warden.



Muthing Mulcher spotted at Agquip

For holistic pasture renovation and cattle grazing, Greg McCulloch has purchased a Muthing Mulcher and as a bonus it was on special at Agquip. Greg plans to use it for ongoing pasture development on his Moonbi and Timbumburi properties. The Muthing is a high quality low body mulcher made in Germany, with cast hammer type flails it made short work of Saffron thistles and general pasture on start-up at Timbumburi. Pictured are Greg McCulloch (at right) with his son-in-law Matthew Burgess.



Chosen for versatility

With two farms a few kilometres apart Jonathan St Clair needed a narrower seeder to make moving seeding equipment between the farms easier. The Davimac DF Drill was chosen after careful consideration of the market offering and has been spec'd with hydraulic coulters, twin tubes, small seeds box and spring wipe harrows. The Davimac DF Drill will be used for both pasture and crop sowing to grow feed for Jonathan's Poll Hereford breeding operation. Pictured at delivery is Jonathan St Clair.



Saw this sculpture called "Heavy Metal"
on Facebook - a good way to make use of all those old bits and pieces lying around the shed and yard
.....what do you think?



A reminder of nature's fury -



This "tree shot" photo was taken just outside Gunnedah while delivering Chris Burgess's tractor. It's what's left after the storms went through on Wednesday 9th December. It was once a fairly large Silky Oak!

**Are you looking for parts for older balers or cheaper parts?
We have some used and "new" old stock parts for:**

- New Holland 317 Small Square Baler • New Holland Super 417 Baler
- New Holland BB940AP Big Square Baler, • SIP 470 Rake

Call Tamworth Spare Parts 67655244



*AGPOINT *BARECO *BOGBALLE *CHALLENGE *DAVEY AFM *DAVIMAC*GREAT WESTERN TILLAGE *GYRAL *HUSTLER *JANKE *JARRETT*JAYLOR
*McHALE *MURRAY HARROWS *NEW HOLLAND *SILVAN *JOHN SHEARER *SIMPLICITY *SIP *SXM *SUPERIOR *TAARUP *VICON



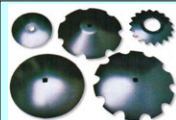
POINTS AND DISCS IN STOCK

Scarifier, Combine, Trashworker, Chisel Plow Points, Sweeps and Discs to suit: Connor Shea, Shearer, Davimac, Jarrett, IHC, Gyrat, Simplicity.

We also have Harrows in stock.



We have Parts in stock for your John Shearer machines



Talk to us about parts for IH 3-4 and IH 3-5 Disc Ploughs

We have Great Western Tillage Discs available to suit all types of ploughs.



GET YOUR SPRAYING SORTED WITH SILVAN - Sprayer Maintenance

Sprayer Check List:

1. Check the condition of hoses on the sprayer, look for damage, kinked or pinched sections, deterioration or loose fittings, all these can lead to downtime, loss of chemical and frustration.
 2. Remove and clean all filters
 3. Remove, inspect and clean all nozzles, (Tip – an old toothbrush is ideal) rinse them and refit after cleaning the nozzle filters.
- Nozzles DO NOT last forever** – they wear and put out an uneven pattern – 2 years is about the maximum time you will get from a low use boomspray – nozzles can also be worn out and need replacement after just a couple of weeks use depending on the chemical you are using. If you have non drip nozzle bodies you should also remove the cap and inspect the diaphragm, clean and reassemble.



PLEASE take the time to run your sprayer with clean water to make sure everything is correct **BEFORE** you put chemical into the tank.

Slasher Maintenance

Before you go slashing **PLEASE** carry out some basic checks:

1. Check that the frame and hitch bolts are all tight.
2. Check that the bolts holding the clutch to the gearbox shaft are tight.
3. Check that the Blade cutter bar is attached properly to the gearbox shaft.
4. Inspect the blades and the blade cutter bar for damage or cracks.
If the Blades are worn, replace them, ensuring you replace the full set together as well as only using new blade bolts, nuts & bushes. **DO NOT use old bolts, nuts and bushes.**
5. Replace the gearbox oil – (Tip: Use a suction syringe to suck out the old oil as most gearboxes do not have a drain plug you can get at.)
6. Dismantle the clutch - it may have rusted together after the rain, using emery cloth, sand down the faces of the clutch to remove any rust. Make sure there is no grease or oil on the clutch parts. Reassemble the clutch, make sure you reset the clutch tension as per your operators handbook, a useful rule of thumb for most clutches is to tighten all of the spring bolts and then back them off 2 turns, be precise with this as the clutch pressure needs to be even.
7. Lastly inspect your PTO shaft and cover - disassemble the cover and shaft - clean the sliding section and re-grease it, check the Uni joints for movement and grease, ensure that the cover is fitted correctly, turns freely on the shaft and is not damaged in any way. With this work done - you can be confident that you will not be unnecessarily delayed now it is time to slash - **If unsure please call our workshops to arrange a check.**



SLASHER BLADES



Howard Blade Kits
2 Blades, 2 Bolts,
2 Bushes & 2 Nuts



HEAVY DUTY SAFETY CLUTCHES

60HP Capacity Safety Clutch

1 3/8" x 6 spline female
1 3/8" x 6 spline male
Part No: B3605 \$243.25 inc GST

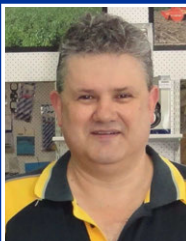


40HP Capacity Safety Clutch

1 3/8" x 6 spline female
1 3/8" x 6 spline male
Part No: B4164 \$227.87 inc GST



TWINE, NET and PLASTIC WRAP in STOCK



David Hartmann
Tamworth

Over 8 years with Goodwin Kenny. Over 35 years in Ag industry. Experienced with New Holland, Case, Ford, John Shearer & Silvan.

GOODWIN KENNY SPARE PARTS TEAM

Tractor and Farm Machinery Dealers since 1962.



246 Bridge St. **TAMWORTH** (02) 6765 5244
42 Mullaey Rd. **GUNNEDAH** (02) 6742 5777
139 Miller St. **ARMIDALE** (02) 6772 8124
www.goodwinkenny.com.au



Peter Mackay
Tamworth

Over 8 years with Goodwin Kenny. Many years in Council & Private Business. Experienced with New Holland, Fiat, Ford, John Shearer & Silvan.



Keith McPhie
Armidale

Over 13 years with Goodwin Kenny. At Armidale - a wide range of parts: Filters, Oils, Twine, Slasher Blades, Bolts & Nuts, Points, BareCo, Silvan, SXM



Mark Kenny
Gunnedah

Over 36 years with Goodwin Kenny. Experienced with New Holland, Versatile, Fiat, Simplicity, Gyrat, Connor Shea, John Shearer.



Ken Mack
Gunnedah

Nearly 15 years with Goodwin Kenny experienced with New Holland, Gyrat, John Shearer, Howard, Morris, Silvan & Simplicity.

OPEN SATURDAY MORNINGS - Tamworth Branch from 9am to 12pm. Gunnedah Branch from 8:30am to 11:30am.

MONTHLY WINNERS Congratulations to our New Holland PLUSH TOY Winners:

D & J Gidley-Baird - Dungowan, IT & BJ Colwell - Yarrowitch, A & D Hanlen - Gunnedah

This month we have 3 **NEW HOLLAND CAPS** to give away - simply return your payment by **Monday 25th, January 2016** to go into the draw. We would also remind customers that we accept Visa & MasterCard over the phone & Debit cards may be used at all our Branches.

All payments by these methods are included in the monthly draw. Electronic/Internet Payments on the last day of the month cannot be allocated until the next day - it would assist us greatly if payments could be made prior to the last day of the month to allow receipting and allocation to accounts prior to Month end.....thank you.



For Internet Banking, our bank account details are: **Commonwealth Bank BSB: 062 602 Account Number 00 272 029**
Please use your account number, name or invoice number as a reference.

JOKE OF THE MONTH

A married couple are out one night at a dance club. There's a guy on the dance floor giving it his all - Break Dancing, Moon Walking, Back Flips, the works. The wife turns to the husband and says "See that guy? Twenty years ago he proposed to me and I turned him down". "Looks like he is still celebrating," the husband says.



Tindaroo Partnership, Nundle



For more information contact
Helen Cowdery on 67693254 or 0427 693254

SALE DATES

On property
at Nundle

WEANER SALE

25th February
2016 at 2PM

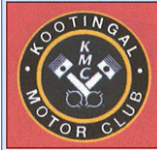
Complete
Dispersal

COW SALE

11th March 2016

**CLEARING
SALE**

16th April 2016



**MOONBI/KOOTINGAL
MOTOR SHOW &
HISTORICAL
MACHINERY EXHIBITION**

12 & 13 MARCH 2016

MOONBI SHOWGROUND

Vintage Cars, Trucks & Tractors, Trade
Stores, Swap Sites, Antiques & Collectables
& more.



\$5 Adults
\$3 Seniors
Under 16 Free
9am Start

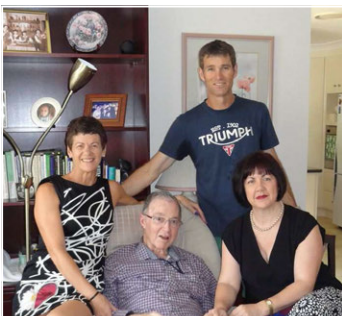
Info: www.kootingalmotorclub.com.au

Just to keep you up to date: I hope you all had a lovely Christmas with your family and friends. My Christmas was quiet as Gina was at Quambone, however I had a lovely lunch with fellow Christmas Parent Orphans - Sharon and Tony Housden. Every year seems a little different as our families change. One thing about Christmas is making contact with family and friends and remembering them, and I now do this by cooking a Recipe given to me by my friend, Margie Pink. When Margie lived in Tamworth she would make this salad and bring it to our Christmas lunch and now that she lives in Newcastle I continue to cook her Carrot and Parsnip Salad to share with friends as it compliments Ham and Turkey so well and is great with the leftovers (hot or cold) - if there are any!

Margie's Carrot and Parsnip Warm Salad Peel and grate 4 carrots and 4 parsnips, heat 60gm butter in a frypan, sauté the carrots and parsnips until tender, Add 2 tablespoons of Wholegrain Mustard, 2 tablespoons of Honey and 2 tablespoons of Lemon Juice and stir through. You can add toasted slivered almonds if you desire. Serve warm.

And for New Year I had a quiet New Year's Eve and then spent the weekend with a very special man!

My father, Norman Lillyman, celebrated his 80th Birthday on 2nd January so I travelled to Gosford to join our extended family. Unfortunately my older brother Les could not attend - the life of a farmer - he was pumping water west of Moree! Dad spent his working life in Moree running Lillyman's Soft Drinks with his brother Barry. They took over the management of the business at a very young age, following the death of their father in a car accident in 1959. Dad was an astute business man, champion swimmer, lawn bowler, local Councillor, an Apexian and he was well known in Moree. Added to this busy life - father to four children, stepfather to two & grandfather to



My sister Vicki Hanks, my Dad, my brother Geoff Lillyman and myself



4 generations celebrating Dad's 80th Birthday

nine, now great-grandfather to four. He now leads a quieter life with his wife Cveta. I think he enjoyed the excitement of his special day with all of us there!
*Wishing you all good health
and happiness in 2016.
.... Susan Goodwin*

GOODWIN KENNY

Tamworth • Gunnedah • Armidale



NEW & USED EQUIPMENT
JANUARY 2016



246 BRIDGE STREET, TAMWORTH - 02 6765 5244

TONY HOUSDEN: 0437 337 131



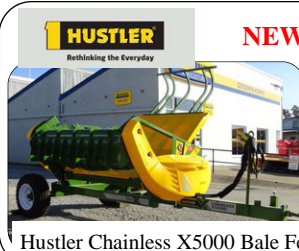
NEW HOLLAND T6030
115 HP, 6 Cylinder, Common Rail,
Range Command Semi Powershift,
18 Forward x 6 Reverse Gears,
Challenge L3900 FEL. With 4 in 1
Bucket **\$99,000.00 inc GST.**
Standard Bucket **\$95,000.00 inc GST.**



**NEW BOGBALLE
L2 PLUS SPREADER**
1150 litre capacity.
Hydraulic on/off control,
Folding cover and spreading
vanes for 20-24 metre spreading
width. **\$13,200.00 inc GST**



NEW HOLLAND BR740A
Round Baler.
This Baler has had an extensive
overhaul. New belts, chains &
sprockets as required.
Workshop checked by Merv.
SPECIAL \$30,000.00 inc GST



HUSTLER
Rethinking the Everyday

NEW HUSTLER

Hustler SL350 Chain 3pl Feeder



Hustler Chainless X5000 Bale Feeder



CASE RB454
Round Baler,
2009, Rotor Cutter Model,
14,500 Bales, well maintained fully
workshop repaired and checked.
New set of knives.
\$33,000.00 inc GST

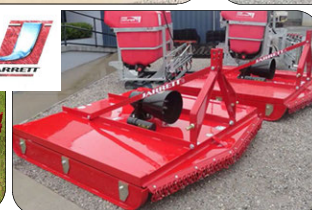
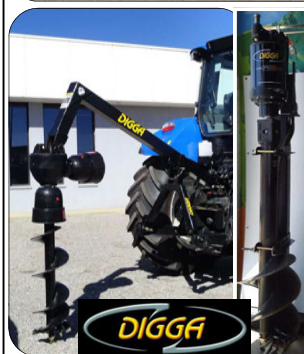
NEW ALCE 1950 MULCHER

Rear wheels &
wear sheet
List Price \$11,698.00

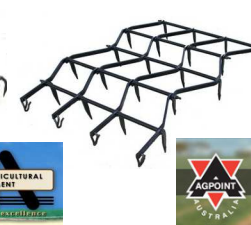
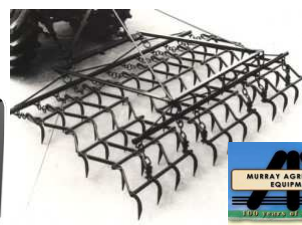
**SPECIAL PRICE
\$9,680.00 inc GST**



NEW - Machines In Stock



**Challenge
Implements**



CONSIGNMENT MACHINES

**CONNOR SHEA (SERIES 2)
LINKAGE TINE DRILL**

7'3" (2.2M) Sowing width
14 tine 6" Spacing Narrow Points.
\$6,600.00 inc GST



SPRAYRITE CAMPO 3200

Trimble Field IQ controller ready
to plug into FM750 guidance unit.
Full Hydraulics, electric over
hydraulics controls for all boom
functions, sprayed approx. 250ha.
\$49,500.00 inc GST



We are the authorised dealers for:

AGPOINT • BARE-CO • BOGBALLE • CHALLENGE • DAVEY AFM • DAVIMAC • GREAT WESTERN TILLAGE
GYRAL • HUSTLER • JANKE • JARRETT • JAYLOR • K-LINE • McHALE • NEW HOLLAND • SILVAN
JOHN SHEARER • SIMPLICITY AUSTRALIA • SIP • SOUTHERN CROSS AG MACHINERY • SUPERIOR • TAARUP • VICON

GOODWIN KENNY

Tamworth • Gunnedah • Armidale



NEW & USED EQUIPMENT
JANUARY 2016



42 MULLALEY ROAD, GUNNEDAH - 02 6742 5777 PETER KENNY: 6742 4502 A/H 0427 688 454

SPECIAL

NEW SUPER ALCE 3200 MULCHER



Dual wheels & wear sheet

SPECIAL PRICE
\$21,000.00 inc GST

CASE LBX332



Large Square Baler, 8x3x3, Rotor Cutter Model, Single Axle. Well maintained Baler.

\$55,000.00 inc GST

SPECIAL

NEW BOGBALLE M2 PLUS SPREADER



3300 litre capacity. Hydraulic on/off control, Folding cover and ladder, 36-42 metre spreading width. Great for Urea!

\$22,000.00 inc GST


NEW HOLLAND TR85



Twin Rotor Harvester, H/Static Drive, 1992 with NH705 25' Bat Reel.

\$\$ HEADER SALE

NEW NEW HOLLAND IRRIGATION ENGINE



Iveco 8.7 Litre Motor, 383HP @ 2100RPM

SPECIAL PRICE
\$51,700.00 inc GST

NEW HOLLAND TR98



Combine Harvester with NH971 Bat Reel Front & Inverell Welding Comb Trailer.

\$\$ HEADER SALE

SPECIAL

NEW TAARUP 9578C RAKE



Twin Rotor Hay Rake 7.0 to 7.8 metre working width. Hydraulic adjustable.

\$33,000.00 inc GST

NEW HOLLAND TR89



Twin Rotor, H/Static Drive, Straw Chopper, 72C 30' O/F Bat Reel and Comb Trailer.

\$\$ HEADER SALE

NEW SILVAN 131RS6G SLASHER



6' Cut, 75HP Gearbox

List Price \$5,750.00 inc GST

SPECIAL PRICE
\$4,900.00 inc GST

NEW HOLLAND TR70



22' open front & Comb Trailer Twin Rotor Combine.

\$\$ HEADER SALE

139 Miller Street, ARMIDALE - 02 6772 8124
Keith McPhie

NEW Carryalls, Drag Harrows, Slashers, Pipe Layers & Rippers



CASE MXU110



116HP, FWA, Cab, 16x16 Semi Powershift Trans with new Challenge FEL and 4 in1 Bucket.

SPECIAL
\$79,000.00 inc GST

CONSIGNMENT MACHINES

SILVAN 1000 LITRE TANK

YEOMANS PLOUGH

SILVAN 200 LITRE AIRBLAST SPRAYER



Never had chemical in it, used on organic grapes. Very tidy. Only 50 hours use.

\$3,300.00 inc GST



Water Tank on Heavy Duty Trailer, Honda Motor on Water Pump, Hose Reel, Tool Box, 2 Hose Outlets.

\$4,000.00 inc GST



7 Tyne Chisel Plough with Shank Pot Seeder on 7 Tynes.

\$4,000.00 inc GST