



New Holland TD5.90 working at Nowendoc

Nena Hicks of "Beaufort" at Nowendoc has chosen a New Holland TD5.90 as an upgrade from an old tractor on her properties. The TD5.90 has been fitted with a Challenge AP35 Plus front end loader with 4 in 1 bucket for lifting and a 2160mm Root Rake for cleaning up around the farm. As the tractor will be working in some steeper country the rear wheels have been spread to the widest setting to add some stability and safety for operators. The TD5.90 has 88 horsepower driving through a 12 forward & 12 reverse gearbox which features a Powershuttle forward/reverse lever mounted on the dash. Electric engage 4wd and Difflock add to the ease of operation. Pictured at delivery installation and start-up are Levi Alley (Goodwin Kenny Service Technician), Graham Bullen and Danny Goodwin.



New Holland T6050 features + Great finance = Tractor Delivery

After recently purchasing a property at Gwabegar, Ron Kent was in the market for a tractor with a front end loader to service the property. Having already had the experience of driving a New Holland T6000, Ron opted for a New Holland T6050 Tractor with a Challenge AP38 Plus Front End Loader to carry out the various tasks needed for the day to day operations including cattle feeding and stick picking. Ron also took advantage of New Holland's (CNH Industrial Capital) low finance rate to purchase the tractor. Pictured are Ron Kent with Janelle Smith at the delivery of his new machine.



New Holland RB150 CROPCUTTER for farm and contract work

Peter and Donna Brand of Borah Creek Pastoral at Manilla have recently updated their round baler to a New Holland RB150. The baler will be used on their own farm as well as for some contracting around the district. The New Holland RB150 with cutters was chosen to keep their hay plant up-to-date, reliable and with the flexibility to bale any crop asked of them. The RB150C features upgraded monitoring and adjustability from the cab, increased density and throughput all while putting out a net wrapped bale with great shape. The knowledge, support and back up of Goodwin Kenny's Hay Technician Merv Leard was also a key factor in the decision to buy

New Holland this time round.

Peter Brand is looking very happy at the delivery and start-up of his new baler.



Another Davimac delivered

Max and Joan Quirk have purchased a new Davimac direct drill for their Attunga property. The Davimac ED drill was chosen as a good economical choice to get a quality drill to replace their old combine. The ED drill has 20 runs at 150mm sowing over 3 bars, with coil tines and inverted T boots. The ED is an ideal machine for smaller area pasture renovation and crop sowing using their 100hp tractor. Max and Joan (pictured) will wait now for a bit of moisture before sowing some oats and pasture.



Conversion to Zero - costing less

Will Mulligan from Merriwa has been looking to go to a zero till farming operation for some time. To buy a "new" air seeder/zero till cultivating bar can turn out to be an expensive exercise so Will decided to convert his existing Horwood Bagshaw Chisel Plow into a planting bar and chose a Simplicity 3000 Litre Trailed Rear 2 Bin Air Cart to put behind his bar. By adding tyne mounted Manutec press wheels and Keech 30mm direct drill points, an upgrade of the existing sowing kit, Will was able to convert to zero till for a lot less than the cost of a new machine purchase. Picture shows Will Mulligan with his father at the delivery of his new machine.

Goodwin Kenny have been in the business of converting older style bars to zero till outfits for a number of years, so if you are thinking about doing this - contact Peter Kenny and he can tailor make the machine for you.



GOODWIN KENNY

Tractor & Farm Machinery Dealers since 1962.

For all your Scheduled Services and Repair work on New Holland, Fiat, Ford, Case & Versatile Tractors, Balers and Haymaking equipment, Silvan Sprayers and all slashers - call our experienced team.

ARC RTA AIRCONDITIONING LICENCE AU11959



Ken Hatton
Tamworth

Service Manager at Tamworth. Over 10 years with Goodwin Kenny. Experienced with New Holland, Fiat, Case & Ford tractors & Air Cond.



Merv Leard
Tamworth

Over 19 years with Goodwin Kenny. Specialist with New Holland Balers, mower conditioners and haymaking.



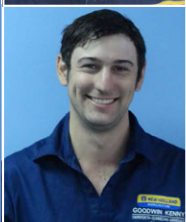
Levi Alley
Tamworth

Commenced training as Apprentice in 2005 & now has over 10 years with Goodwin Kenny. All Tractors and licenced for Air Conditioning.



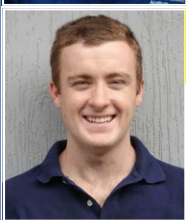
Con Smit
Tamworth

Over 31 years with Goodwin Kenny. Has worked on many Fiat tractors and crawlers and is now passing on his knowledge to the others.



Nathan Keel
Tamworth

Commenced Mechanical Apprenticeship in 2014. Working with Merv to acquire knowledge of Balers & Haymaking gear.



Luke Wiegold
Tamworth

Luke completed his Work Experience with Goodwin Kenny last year and starts the First Year of his Apprenticeship in 2016.



Lachie McArthur
Gunnedah

Lachie has completed the 4th Year of his Apprenticeship in 2015. He also now has an Air Conditioning Licence.



Josh Peake
Gunnedah

New to the Service Team at Gunnedah, Josh is keen to get to know more about the New Holland product and meet our customers.

Nena Hicks at Nowendoc chose an Australian Owned & Made Digga Ramdrill for use with her new New Holland tractor. The ultimate 3point linkage Post Hole Digger, the Ramdrill is a Hydraulic Drive and Hydraulic down force digger. Safety was a consideration in this purchase as the Ramdrill does not require a PTO shaft, the tractor's hydraulic system does all the work, with augers ranging from 200mm up to 600mm available depending on soil type. The Ramdrill can make your fencing safer and quicker and the Ramdrill is cheaper than you might think to purchase. Pictured: Danny Goodwin with Goodwin Kenny's Nathan Keel.



HUSTLER Smooth Hands chosen for feeding

With cattle to feed and 100 bales of round bale silage arriving on his Guyra property at the weekend Chris Dedes needed a Round Bale Grab fast. After looking at a number of brands, Chris considered the Hustler CXR Smooth Hands to be the best he had seen, with a smooth line down the side of the arms, a fixed back plate that allows the bale to be held with 3 points of contact and a very good overall finish. The grab is New Zealand made for professional

use and Chris will get many years of use from his grab. **As the weather dries out call in to see the range of Hustler Round and Big Square bale feeders now in stock at Tamworth.**

This Redback is a good one!

Having sold his older Jarrett slasher recently with his tractor, Eric Lewis was looking for a well-made replacement. On viewing the new Jarrett Redback slasher, Eric made the comment that it was a technically a very good looking machine. With the new galvanised sloped body to shed grass, weed seeds and water the body will be very long lasting. The strong clevis hitch with top link slot also add to the strength & versatility of the Redback. Pictured at the delivery and start-up on his Tamworth property is Eric Lewis.



Timely spraying with Silvan and Casotti

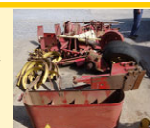
With some rougher country to spray on his Niangala block, Lewis Reid has purchased a Silvan 800 Litre Pasturepak and fitted a Casotti sprayer. The Casotti is renowned for its ability to spray Blackberry, Bracken and other difficult to control weeds due to its high pressure, fine droplet output providing excellent coverage of the weeds. The other real advantage is that there is no boom to be damaged. The Casotti gets its 8-12m coverage width with the pressure and 12v motor driving the oscillating nozzle arms. Spraying will be ongoing for a while following the harvesting of the pine plantation and removal of fallen timber and stumps. By controlling the weeds early Lewis (pictured left) believes his hard work will pay off.

Saving labour at feeding time

John Borthistle of Curlewis was finding feeding out large square bales for his cattle quite a labour intensive task. After some investigation online John found a machine capable of carrying a large bale while continuously feeding out another. The feed out chain is hydraulically operated and has a flow control valve so the feed out speed can be changed at will. The machine is made by JN&R Engineering of Kyabram, Victoria. Picture shows John on delivery of his JN&R Bale Buggy.



Are you looking for parts for older balers or cheaper parts?
We have some used and "new" old stock parts for: New Holland 317 Small Square Baler, New Holland Super 417 Baler, New Holland BB940AP Big Square Baler, SIP 470 Rake
Call Tamworth Spare Parts 67655244





David Hartmann
Tamworth

Over 8 years with Goodwin Kenny. Over 35 years in Ag industry. Experienced with New Holland, Case, Ford, John Shearer & Silvan.

**GOODWIN KENNY
SPARE PARTS TEAM**

Serving Agriculture since 1962

246 Bridge St. **TAMWORTH** (02) 6765 5244
42 Mullaley Rd. **GUNNEDAH** (02) 6742 5777
139 Miller St. **ARMIDALE** (02) 6772 8124
www.goodwinkenny.com.au



Mark Kenny
Gunnedah

Over 36 years with Goodwin Kenny. Experienced with New Holland, Versatile, Fiat, Simplicity, Gyrall, Connor Shea, John Shearer.



Peter Mackay
Tamworth

Over 8 years with Goodwin Kenny. Many years in Council & Private Business. Experienced with New Holland, Fiat, Ford, John Shearer & Silvan.



Keith McPhie
Armidale

Over 13 years with Goodwin Kenny. At **Armidale** - a wide range of parts: Filters, Oils, Twine, Slasher Blades, Bolts & Nuts Points, BareCo, Silvan, SXM



Ken Mack
Gunnedah

Nearly 15 years with Goodwin Kenny experienced with New Holland, Gyrall, John Shearer, Howard, Morris, Silvan & Simplicity.

OPEN SATURDAY MORNINGS - Tamworth Branch from 9am to 12pm. Gunnedah Branch from 8:30am to 11:30am.



100 Litre Smoothflo Spotpak Sprayer

Professional grade sprayer delivers constant flow, no pulsation and high pressure for distance spraying.

- 7L/min open flow pump or 120psi max
- 6m hose, Spotjet gun with adjustable nozzle
- Drain plug for easy cleaning
- Gun clips safely hold spray gun
- Sprays up to 8m.

Part No: SP100-S7

WAS \$619

\$599



HOT PRICE

Silvan 200 Litre Diesel Power Transfer Unit

- 40L/min 12 volt Diesel Power pump
- 4m hose and auto shut-off gun with swivel
- Lockable pump cover and filling cap.



Part No: PF26-X3

**FREE
Diesel
Meter Kit
\$305 VALUE**

\$999



GREAT DEAL

Part No: SQDN200-7

Silvan Sunsational Summer Catalogue Specials are valid to 13 March 2016. Prices include GST, exclude dealer installation and/or freight

TWINE and NET

Part No. 73322219	Small Square Twine 4480 metre	\$82.47 inc GST (YELLOW)
Part No. 87463635	Small Square Twine 4000 metre	\$105.24 inc GST (ORANGE)
Part No. 73322218	Large Square Twine 2200 metre	\$108.03 inc GST (YELLOW)
Part No. 87463634	Large Square Twine 2200 metre	\$109.32 inc GST (ORANGE)
Part No. 73322220	Round Baler Twine 9200 metre	\$70.52 inc GST (YELLOW)
Part No. 87463636	Round Baler Twine 9000 metre	\$92.92 inc GST (ORANGE)
Part No. 73322221	Q-Net 3300 metre x 1.23 metre	\$451.77 inc GST
Part No. 73322131	INFINET 3600 metre x 1.23 metre	\$609.53 inc GST
Part No. 73340502	BLACK NET 1500 metre x 1.2 metre	\$393.21 inc GST

Tapex Triowrap

Triowrap is a high performance multi-layered silage film formulated to withstand our harsh climatic conditions.

Part No:TRIOG750
\$162.29 inc GST



Ideal for Round & Square Bales



When servicing your machinery use genuine New Holland filters, grease, fan-belts and oils.



Hay & Silage Improver

By creating lactic acid more rapidly, more energy and protein is preserved in hay and silage for increased milk and meat production. Available in 20 Litre Drum.

We buy directly from the Importer - Saving you \$\$\$

Part No: HY-SI20 \$346.50 inc GST



Great Western Tillage

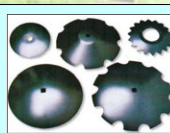
A Division of Great Western Corporation
Toowoomba & Bendigo Australia

We are Great Western Tillage Stockist - points, discs, sweeps etc



Talk to us about parts for IH 3-4 and IH 3-5 Disc Ploughs

We have Great Western Tillage Discs available to suit all types of ploughs.



We have Parts in stock for your John Shearer machines



MONTHLY WINNERS Congratulations to our New Holland Cap Winners:

GJ & MF Beard - Bundarra, DB & SW Spong - Bithramere, TN Bailey - Quirindi

This month we have 3 **NEW HOLLAND CAPS** to give away - simply return your payment by **Friday 25th March 2016** to go into the draw. We would also remind customers that we accept

Visa & MasterCard over the phone & Debit cards may be used at all our Branches.

All payments by these methods are included in the monthly draw. Electronic/Internet Payments on the last day of the month cannot be allocated until the next day - it would assist us greatly if payments could be made prior to the last day of the month to allow receipting and allocation to accounts prior to Month end.....thank you.



For Internet Banking, our bank account details are: **Commonwealth Bank BSB: 062 602 Account Number 00 272 029**

Please use your account number, name or invoice number as a reference.



Tindaroo Partnership, Nundle

SALE DATES - On property at Nundle

COW SALE 11th March 2016

CLEARING SALE 16th April 2016

Helen Cowdery 67693254 / 0427 693254



MOONBI/KOOTINGAL MOTOR SHOW & HISTORICAL MACHINERY EXHIBITION **12 & 13 MARCH 2016 MOONBI SHOWGROUND**

Vintage Cars, Trucks &

Tractors, Trade Stores, Swap Sites,

Antiques & Collectables & more.

\$5 Adults \$3 Seniors Under 16 Free

Info: www.kootingalmotorclub.com.au



WALCHA SHOW

Pavilion displays, Wool Exhibits,

Heifer Show, Merino Sheep, Prime Lambs,

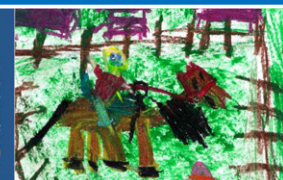
Dog High Jumping, Fireworks, Ring events

and Show Jumping, Art and Photography,

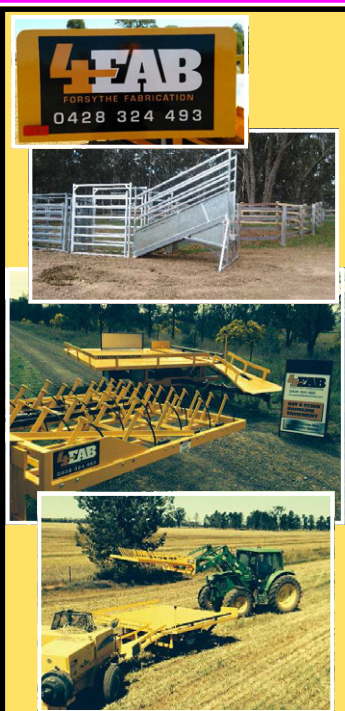
Demolition Derby, Ag Bike Competition,

Bull Ride and more.details at www.walchashow.org.au

139th ANNUAL SHOW
11-12
March
2016



Don't forget to visit the TAMWORTH SHOW Friday 4th - Saturday 5th March 2016 at Tamworth Showground



Matt Forsythe 0428 324 493

This month seems to have been one of nostalgia...with a number of inquiries about older machinery which have raised a few questions and searched our knowledge base.

Have you ever heard of a Fiat 50-52? Well I had not! Over the 28 years I have been here I had not seen this model and then last week I had a telephone call inquiring about parts for this Fiat. The caller had been told Goodwin Kenny knew a bit about Fiats and we might be able to help. He was restoring the **Fiat 50-52 (1947 model)** which had belonged to his father and needed an injector and the part number was "8", that is a little bit different to the eight digit part numbers we have today. Anyway, I asked our Parts team and of course our Fiat technician, Con Smit, who was not familiar with the model but thought it was a crawler with a steering wheel - all points to Con, because when I "googled" the model that is exactly what came up. I referred the customer to a couple of



Wreckers and wished him "Good Luck" with his restoration.

Then there was a customer who has a **1972 New Holland 909** Speedrower that he no longer has a use for and wants to sell. This machine has a 12' front and we are told that the machine has always been shedded. The owner has books and if anyone has an interest in this machine - give me a call on 67655244 and I will refer you to the owner. Also for sale on farm is a International 511 Combine, a 2-11 Scarifier and some harrows.

While we are remembering the past, I can recall while preparing for the Goodwin Kenny's 50th Anniversary in 2012, I discovered that Aub Goodwin and Pat Kenny were given a little bit of help and encouragement to start their own business in 1962 and this help had come from Bill Cornish (a well established dealer in the Agricultural Machinery Industry) and with this in mind I would like to recognise and encourage the efforts of a new local supplier in the industry.


Matt Forsythe, of **Forsythe Fabrications** or **4FAB**, along with his offsider, Daniel Mulligan, have started making Accumulators and Grabs. Matt also fabricates Cattle Yards and Ramps. Last year in August, when we could not secure an Accumulator and Grab from our usual supplier for a customer to match up with his New Holland BC5060 small square baler and to meet his farming deadline, we put our customer in touch with Matt and Daniel. I have spoken with our customer, Peter Gett at Narrabri, this week to follow up on this and was so pleased to be told by Peter that Matt and Daniel had done a great job in supplying an Accumulator and Grab that he was totally satisfied with. Peter also mentioned that he had also received a follow-up call from 4FAB asking for feedback and Peter was pleased to receive this call and offer his thoughts.

This month's "funny" appeared on my calendar on 15th February, the day after all the sentiment of valentine's Day, it made us all laugh!

.. Susan Goodwin



• Marriage is all about spending the rest of your life with someone you want to **strangle** ...and not doing it because you'd miss them.



aunty acid

GOODWIN KENNY

Tamworth • Gunnedah • Armidale



NEW & USED EQUIPMENT
MARCH 2016



246 BRIDGE STREET, TAMWORTH - 02 6765 5244 TONY HOUSDEN: 0437 337 131



CASE RB454 Round Baler, 2009, Rotor Cutter Model, 14,500 Bales, well maintained fully workshop repaired and checked. New set of knives. **\$33,000.00 inc GST**

CASE RB454 Round Baler, 2009, Rotor Cutter Model, 17,000 Bales, well maintained & workshop checked. **\$34,100.00 inc GST**

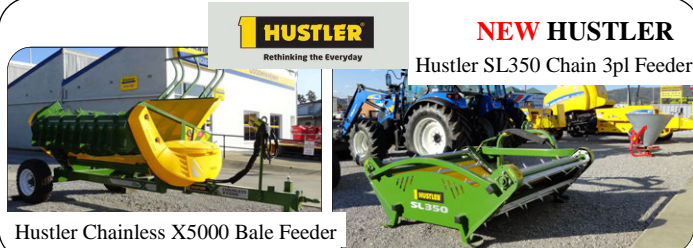
NEW HOLLAND BR740A Round Baler, workshop checked, New belts, chains and sprockets. **\$30,000.00 inc GST**



NEW HOLLAND T6030

115 HP, 6 Cylinder, Common Rail, Range Command Semi Powershift, 18 Forward x 6 Reverse Gears, Challenge L3900 FEL. With 4 in 1 Bucket **\$99,000.00 inc GST**

Standard Bucket **\$95,000.00 inc GST**



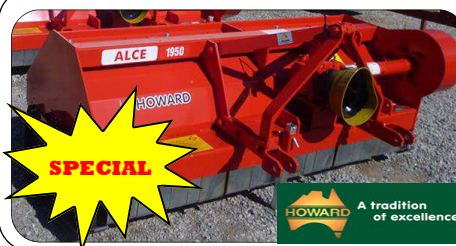
HUSTLER

Rethinking the Everyday

NEW HUSTLER

Hustler SL350 Chain 3pl Feeder

Hustler Chainless X5000 Bale Feeder



NEW ALCE 1950 MULCHER

Rear wheels & wear sheet

List Price \$11,698.00

SPECIAL PRICE \$9,680.00 inc GST

Silvan 100lt Spotpak – 12 volt Sold new by us. One Use only. Fully cleaned & tested, Fitted with upgraded pump 11.3l/min, Double Sided Boomless Nozzle Kit, 6m Spot Spray hose & Spotjet Spray Gun, Pressure Regulator & Pressure Gauge.

Special \$935.00 inc GST - 1 only

List price \$1,260 inc GST



Challenge Implements

3PL Bale Spike
\$2,695.00

Pallet Fork & Tool Carrier \$2,464.00



IN STOCK



Grab \$3,740.00



Counterweight \$2,035.00



Large Bale Spike \$2,090.00

All prices include GST

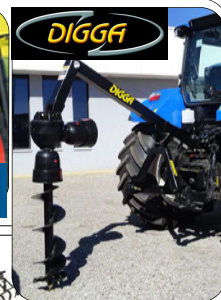
Silvan SX500 338 Litre Spreader \$990.00



Silvan



bobballe



DIGGA

Jarrett MDX150 5' Slasher \$3,500.00



Jarrett



Jarrett RB6-75 Slasher \$4,290.00

SIP 360/10 Rake \$11,500.00



SIP



MURRAY AGRICULTURAL EQUIPMENT



AGPOINT

CONSIGNMENT MACHINES

NEW HOLLAND 317 BALER

Good condition
\$7,500.00 inc GST



SPRAYRITE CAMPO 3200

Trimble Field IQ controller ready to plug into FM750 guidance unit.

Full Hydraulics, electric over hydraulics controls for all boom functions, sprayed approx. 250ha.

\$49,500.00 inc GST



We are the authorised dealers for:

AGPOINT • BARE-CO • BOGBALLE • CHALLENGE • DAVEY AFM • DAVIMAC • GREAT WESTERN TILLAGE
GYRAL • HUSTLER • JANKE • JARRETT • JAYLOR • K-LINE • McHALE • NEW HOLLAND • SILVAN
JOHN SHEARER • SIMPLICITY AUSTRALIA • SIP • SOUTHERN CROSS AG MACHINERY • SUPERIOR • TAARUP • VICON

GOODWIN KENNY

Tamworth • Gunnedah • Armidale



NEW & USED EQUIPMENT
MARCH 2016



42 MULLALEY ROAD, GUNNEDAH - 02 6742 5777 PETER KENNY: 6742 4502 A/H 0427 688 454



ON DISPLAY AT GUNNEDAH

NEW HOLLAND T8.410 SMART TRAX

340 HP base, boost to 409 HP
CVT with Clutchless Power Shuttle, 18" Smart Trax, Terraglide Front Axle, Sidewinder II Armrest fitted with Intelliview IV Monitor.



ON DISPLAY AT GUNNEDAH

NEW HOLLAND T6070 TRACTOR, 140 rated engine HP, 16x16 Electroshift transmission, 6.75 litre 6 Cylinder Engine, Clutchless Shuttle, 2 rear Remote Valves, Cab with Loader View Panel, Comfort Ride Suspension and Deluxe Air Suspension Seat.



SPECIAL

NEW SUPER ALCE 3200 MULCHER

Dual wheels & wear sheet

SPECIAL PRICE \$21,000.00 inc GST



NEW SILVAN 131RS6G SLASHER

6' Cut, 75HP Gearbox

List Price \$6,380.00 inc GST

SPECIAL PRICE \$4,300.00 inc GST



NEW NEW HOLLAND IRRIGATION ENGINE

Iveco 8.7 Litre Motor, 383HP @ 2100RPM

SPECIAL PRICE \$51,700.00 inc GST



NEW BOGBALLE M2 PLUS SPREADER

3300 litre capacity. Hydraulic on/off control, Folding cover and ladder, 36-42 metre spreading width. Great for Urea!

\$22,000.00 inc GST



CASE LBX332

Large Square Baler, 8x3x3, Rotor Cutter Model, Single Axle. Well maintained Baler.

\$55,000.00 inc GST



\$\$\$ HEADER SALE

NEW HOLLAND TR70
22' open front & Comb Trailer
Twin Rotor Combine.

NEW HOLLAND TR85
Twin Rotor Harvester
NH705 25' Bat Reel.

NEW HOLLAND TR89
Twin Rotor, H/Static Drive,
Straw Chopper, 72C O/F Bat Reel.

NEW HOLLAND TR98
Combine Harvester with NH971
Bat Reel Front &
Inverell Welding Comb Trailer.



CONSIGNMENT MACHINES

SILVAN 1000 LITRE TANK

YEOMANS PLOUGH

SILVAN 200 LITRE AIRBLAST SPRAYER



Never had chemical in it, used on organic grapes. Very tidy. Only 50 hours use.

\$3,300.00 inc GST



Water Tank on Heavy Duty Trailer, Honda Motor on Water Pump, Hose Reel, Tool Box, 2 Hose Outlets.

\$4,000.00 inc GST



7 Tine Chisel Plough with Shank Pot Seeder on 7 Tines.

\$4,000.00 inc GST



139 Miller Street, ARMIDALE - 02 6772 8124
Keith McPhie

SX SOUTHERN CROSS AG MACHINERY

NEW Carryalls, Drag Harrows, Slashers, Pipe Layers & Rippers



CASE MXU110

116HP, FWA, Cab, 16x16 Semi Powershift Trans with new Challenge FEL and 4 in1 Bucket.

SPECIAL \$79,000.00 inc GST