



### Working for a better future

NSW Department of Industry (formally DPI) have added another New Holland tractor to their trial planting fleet in Northern NSW.

A new New Holland T4.95 Dual Command will join a New Holland TL80A and three New Holland T5040 tractors that all get used at the various trial sites throughout the area. The role these tractors play is vital to the ongoing development of sustainable cropping and pasture options for you, our customers, in this area. The New Holland T4.95 Dual Command has 97hp Common Rail Diesel engine coupled to the 24Forward – 24Reverse Gearbox with electrohydraulic Forward Reverse shuttle. Due to the nature of the small plot work that this tractor does and the constant loading on and off trucks to move to other sites, it has been fitted with creeper gear as well. The new cab features many improvements while keeping most of the controls very similar

to the previous models

so that operators can move between tractors with ease and familiarity. Picture shows Goodwin Kenny Salesman - Tony Housden and Paul Nash from the NSW Department of Industry.



### Spreading made easier

Kieran Shephard from Australian Grain Technologies at Narrabri was looking for a reliable, easy to use super spreader for pre-applying and in-crop fertiliser application for the various trial plants they grow. Having had some previous experience with the Bogballe range of machines, his choice was a Bogballe 3000 Litre M2 Plus. This spreader has the Bogballe Calibration Icon for quick and easy machine set up with on-the-go rate adjustment. This monitor can also log the area spread, application rate and total quantity of material supplied. Picture shows Kieran on delivery of his new Bogballe spreader.

### Simplicity in action

Jamie Hutchins - Farm Manager for Tom Bailey at Gunnadilly, Quirindi was tasked to purchase an Air Seeder with specific needs. These included large capacity, variable rate technology, specific wheel centres and ease of operation. Already having a Simplicity Front Mount Bin, Jamie opted for a 9000 Litre Trailed Rear 3 Bin Air Seeder. This machine had a special 2 metre chassis made to suit the irrigation beds on the farm. Linear actuators were also fitted to cope with the variable rate needed. Other options include a full lighting kit for night operation, an 8' load auger and on-board calibration kit which is a new innovation with Simplicity Air Seeder. Simplicity Seeders can be adapted to suit almost any application from front mounted row crop applications to large Broadacre machines with controlled traffic farming applications out to 4 metre wheel centres. Picture shows Simplicity 9000 TQC3 ready for action.



**END OF AN ERA** - Helen Cowdery at Tindaroo, Nundle will have the last of her three sales on Saturday 16th April. Helen's Weaner and Cow Sales were both very successful and are a testament to her hard work and years of astute breeding. As a customer of Goodwin Kenny for over 50 years, our records show her continued patronage from a Fiat 513R tractor in 1964, a Fiat 650 tractor in 1969 through to a number of larger Fiat tractors over the years and more recently her hay plant (rake, mower, round baler and wrapper), Sprayers, Slashers and a couple of New Holland tractors. All the machinery and household will go into the Clearing Sale on Saturday 16th April at Tindaroo. Helen has sold her property and will retire to Sydney where she will hopefully get to enjoy a different lifestyle where checking weeds won't be on the daily agenda and rain will not be as critical to her lifestyle, and she will have time to enjoy her family, visit Art Galleries and read books. Helen's business relationship with Goodwin Kenny started when dealing with Aub and Joyce Goodwin in the 60's, then with my late husband Peter and myself and I am pleased that Helen has become a friend - a woman that I greatly admire.

*All at Goodwin Kenny wish Helen a fun-filled, happy retirement.*

### CLEARING SALE

**Saturday 16th April 2016**

**On property at Tindaroo, Nundle**

**Helen Cowdery**

**67693254 / 0427 693254**



**Tindaroo Partnership, Nundle**



**Photos and list: [www.cwrural.com.au](http://www.cwrural.com.au)**

**Agent: Chris Ward Property Sales**

**Contact: Scott Waters 0428 860435**



## GOODWIN KENNY

Tractor & Farm Machinery Dealers since 1962.

**For all your Scheduled Services and Repair work on New Holland, Fiat, Ford, Case & Versatile Tractors, Balers and Haymaking equipment, Silvan Sprayers and all slashers - call our experienced team.**

**ARC RTA AIRCONDITIONING LICENCE AU11959**



**Ken Hatton**  
Tamworth

Service Manager at Tamworth. Over 10 years with Goodwin Kenny. Experienced with New Holland, Fiat, Case & Ford tractors & Air Cond.



**Merv Leard**  
Tamworth

Over 19 years with Goodwin Kenny. Specialist with New Holland Balers, mower conditioners and haymaking.



**Levi Alley**  
Tamworth

Commenced training as Apprentice in 2005 & now has over 10 years with Goodwin Kenny. All Tractors and licenced for Air Conditioning.



**Con Smit**  
Tamworth

Over 31 years with Goodwin Kenny. Has worked on many Fiat tractors and crawlers and is now passing on his knowledge to the others.



**Nathan Keel**  
Tamworth

Commenced Mechanical Apprenticeship in 2014. Working with Merv to acquire knowledge of Balers & Haymaking gear.



**Luke Wiegold**  
Tamworth

Luke completed his Work Experience with Goodwin Kenny last year and starts the First Year of his Apprenticeship in 2016.



**Lachie McArthur**  
Gunnedah

Lachie has completed the 4th Year of his Apprenticeship in 2015. He also now has an Air Conditioning Licence.



**Josh Peake**  
Gunnedah

New to the Service Team at Gunnedah, Josh is keen to get to know more about the New Holland product and meet our customers.

**Used New Holland T6010 & Hustler to new home**  
With a requirement for a larger tractor to take the load off some ageing machinery and do some tasks a bit easier, Matthew Fauchon had considered new tractors but found it hard to justify the full expense. Luckily for him Goodwin Kenny traded a very low hour, very well maintained New Holland T6010 (102hp) tractor with a Challenge Front End Loader. Tractors like these are rare trades recently and this New Holland adds to Matthews fleet of Fiat and New Holland tractors on his farm and in his Fertilizer spreading business.



With sheep to feed and no easy way to do it, Matthew has chosen the Hustler Chainless X5000 trailed feeder that Goodwin Kenny had in stock. The X5000 is self-loading and can carry 2 bales, one on the table and another on the loading forks. For true flexibility of feed purchasing, the X5000 has the ability to feed out both Round and Large Square bales of hay or silage. You can stop the machine part way through the feed out process & move to another site or a different paddock and finish the feed out.

**Hustler** is a New Zealand company building high quality machinery for over 50 years.

### Bogballe Demonstration Day - 18th February

A group of farmers recently had the chance to view the Bogballe range of spreaders at an Information and Demonstration Day at Don Finlay's property "Marlo" at Mullaley. On hand were Mark Bastian and Steve Welke from Techgrow International, the direct importers of the machines, from Clare in South Australia to give the growers an overview

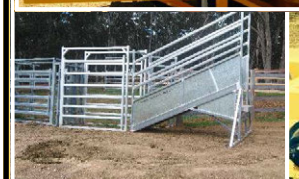


of the features and

benefits of the range of spreaders. Once this was done a Bogballe spreader was put through its paces so the attendees could view the ease of operation and the spread pattern these rigs can achieve. Picture shows Mark Bastian and Steve Welke going through the features and benefits and the Bogballe machine in action.

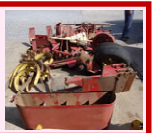
### Tidying up the farm - no longer a challenge

James Micallef has purchased a Challenge Implements Bull Blade – Root Rake to use with his New Holland TS100 tractor and loader. He plans to reshape roadways and ditches, clean up timber and generally tidy up a few areas on his Wallamore road farm at Tamworth. James had seen a couple of Challenge blades and chose his with Manual angle and Hydraulic tilt to get maximum versatility and ease of operation. His comment was that the blade looked more substantial than he thought it would have and after using it he rang to say how impressed he was with the blade.



**Matt Forsythe 0428 324 493**

**Are you looking for parts for older balers or cheaper parts?**  
**We have some used and "new" old stock parts for:** New Holland 317 Small Square Baler, New Holland Super 417 Baler, New Holland BB940AP Big Square Baler, SIP 470 Rake  
**Call Tamworth Spare Parts 67655244**





## GOODWIN KENNY

Tractor & Farm Machinery Dealers since 1962

**For all your Spare Parts and great service from our experienced team**



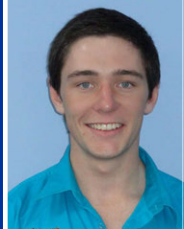
**David Hartmann**  
Tamworth

Over 8 years with Goodwin Kenny. Over 35 years in Ag industry. Experienced with New Holland, Case, Ford, John Shearer & Silvan.



**Peter Mackay**  
Tamworth

Over 8 years with Goodwin Kenny. Many years in Council & Private Business. Experienced with New Holland, Fiat, Ford, John Shearer & Silvan.



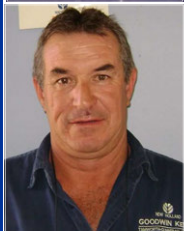
**Paul Murphy**  
Tamworth

Paul commenced work with the Tamworth Spare Parts team in February and is new to the Ag industry so he will have a lot to learn from David and Peter.



**Mark Kenny**  
Gunnedah

Over 36 years with Goodwin Kenny. Experienced with New Holland, Versatile, Fiat, Simplicity, Gyrat, Connor Shea, John Shearer.



**Ken Mack**  
Gunnedah

Nearly 15 years with Goodwin Kenny experienced with New Holland, Gyrat, John Shearer, Howard, Morris, Silvan & Simplicity.



**Keith McPhie**  
Armidale

Over 13 years with Goodwin Kenny. At Armidale - a wide range of parts: Filters, Oils, Twine, Slasher Blades, Bolts & Nuts Points, BareCo, Silvan, SXM

**\*AGPOINT \*BARECO \*BOGBALLE  
\*CHALLENGE \*DAVEY AFM  
\*DAVIMAC \*GREAT WESTERN TILLAGE  
\*GYRAL \*HUSTLER \*JANKE  
\*JARRETT \*JAYLOR \*McHALE \*MURRAY  
HARROWS \*NEW HOLLAND \*SILVAN  
\*JOHN SHEARER \*SIMPLICITY \*SIP  
\*SXM \*SUPERIOR \*TAARUP \*VICON**

246 Bridge St. **TAMWORTH**  
(02) 6765 5244  
42 Mullaley Rd. **GUNNEDAH**  
(02) 6742 5777  
139 Miller St. **ARMIDALE**  
(02) 6772 8124  
[www.goodwinkenny.com.au](http://www.goodwinkenny.com.au)



## Autumn Spraying Specials

Prices valid from 1 April to 31 May 2016. Prices include GST.

200 Litre

### 100 & 200 Litre Smoothflo Spotpak Sprayers

*Delivers constant flow, no pulsation and the high pressure for distance spraying*

- 7 L/min or 120 psi max open flow pump
- 6m hose, Spotjet gun with adjustable nozzle
- Drain plug for easy cleaning
- Gun clips safely hold spray gun
- Sprays up to 8m.

**\$599** 100L: SP100-S7

**\$699** 200L: SP200-S7



### 200 Litre Trukpak Sprayer with Economy Reel

*Spray with the increased flexibility of a 30m hose reel for pest control, roadside or on farm use.*

- Aquatec 7L/min or 120psi max constant flow pump for no pulsation spraying.
- 30m of 10mm hose and spray gun.

**\$1,099**

200L & 30m Reel  
TK200-S7-1



### PARTS for your GYRAL MACHINERY



**Stocked in TAMWORTH and GUNNEDAH**

Talk to us about parts for IH 3-4 and IH 3-5 Disc Ploughs



Great Western Tillage Discs available to suit all types of ploughs.



**DAVIMAC**  
MANUFACTURING



Great Western Tillage



### POINTS and DISCS in STOCK

Scarifier, Combine, Trashworker, Chisel Plow Points, Sweeps, Discs for Connor Shea, Shearer, Jarrett, Davimac, IHC, Gyrat, Simplicity.



**UPDATE YOUR DRILL** - We had a phone call recently from another satisfied customer after helping him out with an upgrade of a Seed Drill. Mark Little at Walcha originally enquired about the price for a new direct drill to replace an older drill that was struggling to sow effectively in some unworked areas of his Walcha farm.

He eventually found a used machine that was suitable to upgrade. After discussion and comparison of a number of options, Mark elected to remove all the tines and fit new John Shearer '630' Tine assemblies complete with Superseeder Points. The new '630' tines with a breakout of 350lb have sown very effectively in some of the rockiest and hardest areas of the farm, almost as if you were sowing into cultivated ground, according to Mark. The Superseeder points have created the ideal seedbed just ready for some moisture now to get all the crop away.



### Engine Coolant

As we come into the cooler months it is vital to check and maintain the coolant in your tractor. The wrong coolant can cause irreparable damage to your engine and cooling system. Coolant controls corrosion (rust), assists cooling, resists freezing, reduces cavitation that leads to pitting, reduces the build-up of minerals, and much more.



**If you have not replaced your coolant in the last 2 years – NOW is the time. Coolant does not last forever and just like oil must be changed regularly, either 2 years or 1200 hours.** (Refer to Operator Manual) With new engine technologies comes new coolant technology – it is VITAL that you check the coolant required for your machine and get the correct one, it is also vitally important that you **do not mix coolants** with some of the new products. If you have any questions or doubts about the requirements for your machinery - please call our Spare Parts or Service teams.



**OPEN SATURDAY MORNINGS - Tamworth Branch from 9am to 12pm. Gunnedah Branch from 8:30am to 11:30am.**



## MONTHLY WINNERS

 Congratulations to our New Holland Cap Winners:

MJ & JH Maunder - Boggabri, Golland Partnership - Quirindi, Russell Chickens - Manilla

This month we have 3 NEW HOLLAND CAPS to give away - simply return your payment by **Tuesday 26th April 2016** to go into the draw. We would also remind customers that we accept Visa & MasterCard over the phone & Debit cards may be used at all our Branches.

All payments by these methods are included in the monthly draw. Electronic/Internet Payments on the last day of the month cannot be allocated until the next day - it would assist us greatly if payments could be made prior to the last day of the month to allow receipting and allocation to accounts prior to Month end.....thank you.

For Internet Banking, our bank account details are: **Commonwealth Bank BSB: 062 602 Account Number 00 272 029**

Please use your account number, name or invoice number as a reference.



**Joke of the Month** The Lone Ranger and Tonto walked into a saloon and sat down to drink a beer. After a few minutes, a big tall cowboy walked in and said "Who owns the big white horse outside?" The Lone Ranger stood up, hitched his gun belt, and said, "I do....Why?" The cowboy looked at the Lone Ranger and said, "I just thought you'd like to know that your horse is about dead outside!" The Lone Ranger and Tonto rushed outside and sure enough Silver was ready to die from heat exhaustion.

The Lone Ranger got the horse water and soon Silver was starting to feel a little better. The Lone Ranger turned to Tonto and said, "Tonto, I want you to run around Silver and see if you can create enough of a breeze to make him start to feel better." Tonto said, "Sure, Kemosabe" and took off running circles around Silver. Not able to do anything else but wait, the Lone Ranger returned to the saloon to finish his drink. A few minutes later, another cowboy struts into the bar and asks, "Who owns that big white horse outside?" The Lone Ranger stands again, and claims, "I do, what's wrong with him this time?" "Nothing, but you left your injun runnin!"

**CARLTON MID TAMWORTH CUP**  
SUNDAY 24 APRIL 2016

### MARQUEE

Includes: Full hospitality, entry, facebook and entertainment.

Tickets \$120 for adults  
\$60 for kids



**TJC**  
Tamworth Jockey Club & FUNCTION CENTRE

- > FASHION ON THE FIELD
- > 8 RACE PROGRAM
- > FOR THE KIDS

Jumping castle & face painting

**GATE ENTRY \$15 KIDS ENTER FREE**

**TAMWORTH JOCKEY CLUB**  
02 6765 9387  
tamworthjockeyclub.com.au  
enquiries@tamworthjockeyclub.com.au



### The 53rd Currabubula Red Cross Art Show and Sale

To be held in the Currabubula War Memorial Hall from **12-15 May 2016**

**Opening Night - Thursday 12th May** from 6pm - 9pm. Cost \$20pp.

Everyone is welcome. Refreshments provided.

The Art Show will be open: **Friday 13th May: 10am to 5pm**

**Saturday 14th May: 10am to 5pm Sunday 15th May: 10am to 4pm**

For info: [www.currabubulaartshow.com.au](http://www.currabubulaartshow.com.au)

### Currabubula Boutique Market

**Sunday May 1st**  
10am to 2pm

at Currabubula Public School  
*Handmade gifts, homemade goodies and yummy lunch options, face painting, raffles and everything you need to find a perfect gift for Mothers Day.*



### Boggabri Drovers Campfire

**22-24 April 2016** The weekend involves entertainment, campfire cooking, bush yarns and demonstrations of rural activities.



**Machinery Display Old & New**—This year there is \$400 prize money & People's Choice trophy for best old machine voted crowd favourite. Sponsored by Keith & Ken Blanch.

More info: [www.boggabri.com.au](http://www.boggabri.com.au) or 0418 220340

**Just to keep you up-to-date:** I visited Tamworth Show and the Pavilion looked great. There was certainly a lot of effort from the Show Committee, their many volunteers and the exhibits from locals and the schools were all very interesting. I had lunch with the Committee and it seems that they are looking to improve the show and the move to the AELEC, which would provide undercover ring events, would be great. I was pleased to see one of my fellow artists, Elaine Abberfield, win the Champion Painting. I was very satisfied with a 2nd Place in the Open Painting and 2nd Place in the Drawing - I just need to find more time to paint & draw! From all reports Kootingal Motor Show was also a great success with many visitors to the grounds at Moonbi.

Winner of the Raffle for a New Holland Ride-on Toy Tractor was Val Stevenson from Curlewis. It seems like "what's on" for the next few months will involve Horses, Art and Food. First up will be the **Long Lunch in Anzac Park** on Sunday 10th April - should be a great day out with a few friends, fine food and wine. Then the **Tamworth Cup** on Sunday 24th April at Tamworth Jockey Club and this year Goodwin Kenny is a Sponsor. Next month is the **53rd Currabubula Art Show and Sale** - details above and then **Wean Picnic Races** on Saturday 9th July.

Last year at Wean I was talking about my new hobby and interest in painting & perhaps painting a Landscape of Wean Races and the Club President, Les Alker, commented that I should do a painting for the poster - so I said I would think about it - then late last year he let me know that the theme would be 1920's "Gatsby" and the Charity recipient would be **Westpac Rescue Helicopter Service at Tamworth** - so I decided to take on the challenge and create a fun "poster" style painting that portrays Wean, the crowds, the horses and the country atmosphere with a little bit of 1920's "Gatsby" - come to Wean and see!

.. Susan Goodwin



I was at a wedding reception once where all the married men were asked to, "Stand next to the one person who has made your life worth living." The bartender was almost crushed to death. **aunty acid**

**WEAN PICNIC RACES**  
SATURDAY 9TH JULY 2016  
**THE GREAT GATSBY**  
Come Race With Us.....  
Fillies, Food, Fashion & Fun

2016 WEAN CHARITY RECIPIENT  
Westpac Rescue Helicopter Service

TAMWORTH SUPPORT GROUP

For More Information [www.weanraces.com.au](http://www.weanraces.com.au)



# GOODWIN KENNY

Tamworth • Gunnedah • Armidale



NEW & USED EQUIPMENT  
APRIL 2016



246 BRIDGE STREET, TAMWORTH - 02 6765 5244

TONY HOUSDEN: 0437 337 131



**CASE RB454** Round Baler, 2009, Rotor Cutter Model, 14,500 Bales, well maintained fully workshop repaired and checked. New set of knives. **\$33,000.00 inc GST**

**CASE RB454** Round Baler, 2009, Rotor Cutter Model, 17,000 Bales, well maintained & workshop checked. **\$34,100.00 inc GST**

**NEW HOLLAND BR740A** Round Baler, workshop checked, New belts, chains and sprockets. **\$30,000.00 inc GST**



## CASE LBX332

Large Square Baler, 8x3x3, Rotor Cutter Model, Single Axle. Well maintained Baler.

**\$55,000.00 inc GST**



## NEW ALCE 1950 MULCHER

Rear wheels & wear sheet

List Price \$11,698.00

**SPECIAL PRICE \$9,680.00 inc GST**



## NEW HOLLAND T6030

115 HP, 6 Cylinder, Common Rail, Range Command Semi Powershift, 18 Forward x 6 Reverse Gears, Challenge L3900 FEL. With 4 in 1 Bucket **\$99,000.00 inc GST**

Standard Bucket **\$95,000.00 inc GST**

**Silvan 100lt Spotpak** – 12 volt Sold new by us. One Use only. Fully cleaned & tested, Fitted with upgraded pump 11.3l/min, Double Sided Boomless Nozzle Kit, 6m Spot Spray hose & Spotjet Spray Gun, Pressure Regulator & Pressure Gauge.

List price \$1,260 inc GST



**Special \$935.00 inc GST - 1 only**



**3PL Bale Spike**  
\$2,695.00

**Pallet Fork & Tool Carrier** \$2,464.00



**IN STOCK**



All prices include GST

**Grab \$3,740.00 Counterweight \$2,035.00 Large Bale Spike \$2,090.00**

**Silvan SX500 338 Litre Spreader \$1,045.00**



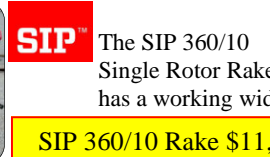
bogballe



**Jarrett MDX150 5' Slasher \$3,500.00**

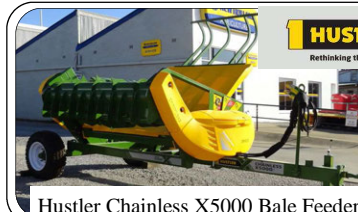
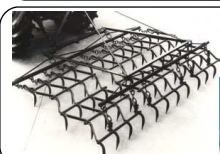


**Jarrett RB6-75 Slasher \$4,290.00**



The SIP 360/10 Single Rotor Rake has a working width of 3.6 metres.

**SIP 360/10 Rake \$11,500.00**



Hustler Chainless X5000 Bale Feeder



Hustler SL350 Chain 3pl Feeder

## CONSIGNMENT MACHINES

## NEW HOLLAND 317 BALER

Good condition  
**\$7,500.00 inc GST**



## SPRAYRITE CAMPO 3200

Trimble Field IQ controller ready to plug into FM750 guidance unit. Full Hydraulics, electric over hydraulics controls for all boom functions, sprayed approx. 250ha.  
**\$49,500.00 inc GST**





# GOODWIN KENNY

Tamworth • Gunnedah • Armidale



NEW & USED EQUIPMENT  
APRIL 2016



42 MULLALEY ROAD, GUNNEDAH - 02 6742 5777 PETER KENNY: 6742 4502 A/H 0427 688 454



ON DISPLAY AT GUNNEDAH

## NEW HOLLAND T8.410 SMART TRAX

340 HP base, boost to 409 HP  
CVT with Clutchless Power Shuttle, 18" Smart Trax, Terraglide Front Axle, Sidewinder II Armrest fitted with Intelliview IV Monitor.



ON DISPLAY AT GUNNEDAH

## NEW HOLLAND T6070

TRACTOR, 140 rated engine HP, 16x16 Electroshift transmission, 6.75 litre 6 Cylinder Engine, Clutchless Shuttle, 2 rear Remote Valves, Cab with Loader View Panel, Comfort Ride Suspension and Deluxe Air Suspension Seat.



**NEW SUPER ALCE 3200 MULCHER**  
Dual wheels & wear sheet

**SPECIAL PRICE \$21,000.00 inc GST**



## NEW BOGBALLE M2 PLUS SPREADER

3300 litre capacity. Hydraulic on/off control, Folding cover and ladder, 36-42 metre spreading width. Great for Urea!

**\$22,000.00 inc GST**



## NEW SILVAN 131RS6G SLASHER

6' Cut, 75HP Gearbox

List Price \$6,380.00 inc GST

**SPECIAL PRICE \$4,300.00 inc GST**



## NEW NEW HOLLAND IRRIGATION ENGINE

Iveco 8.7 Litre Motor, 383HP @ 2100RPM

**SPECIAL PRICE \$51,700.00 inc GST**

# \$\$\$ HEADER SALE



**NEW HOLLAND TR70**  
22' open front & Comb Trailer  
Twin Rotor Combine.



**NEW HOLLAND TR85**  
Twin Rotor Harvester  
NH705 25' Bat Reel.



**NEW HOLLAND TR89**  
Twin Rotor, H/Static Drive,  
Straw Chopper, 72C O/F Bat Reel.



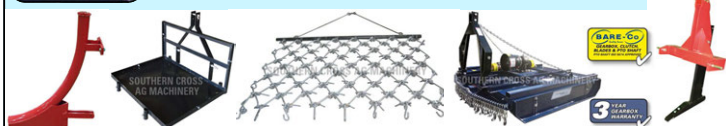
**NEW HOLLAND TR98**  
Combine Harvester with NH971  
Bat Reel Front &  
Inverell Welding Comb Trailer.



139 Miller Street, ARMIDALE - 02 6772 8124  
Keith McPhie



**NEW Carryalls, Drag Harrows, Slashers, Pipe Layers & Rippers**



## CASE MXU110

116HP, FWA, Cab, 16x16 Semi Powershift Trans with new Challenge FEL and 4 in 1 Bucket.

**SPECIAL \$79,000.00 inc GST**

## CONSIGNMENT MACHINES ARMIDALE

### SILVAN 200 LITRE AIRBLAST SPRAYER



Never had chemical in it, used on organic grapes. Very tidy.  
Only 50 hours use.

**\$3,300.00 inc GST**

### SILVAN 1000 LITRE TANK



Water Tank on Heavy Duty Trailer, Honda Motor on Water Pump, Hose Reel, Tool Box, 2 Hose Outlets.

**\$4,000.00 inc GST**

### YEOMANS PLOUGH



7 Tine Chisel Plough with Shank Pot Seeder on 7 Tines.  
**\$4,000.00 inc GST**

We are the authorised dealers for:

AGPOINT • BARE-CO • BOGBALLE • CHALLENGE • DAVEY AFM • DAVIMAC • GREAT WESTERN TILLAGE  
GYRAL • HUSTLER • JANKE • JARRETT • JAYLOR • K-LINE • McHALE • NEW HOLLAND • SILVAN  
JOHN SHEARER • SIMPLICITY AUSTRALIA • SIP • SOUTHERN CROSS AG MACHINERY • SUPERIOR • TAARUP • VICON