



GLEN COLLIN adds another New Holland to fleet

With time a finite resource Jim Young, in conjunction with the family, has decided that another tractor would save them precious time travelling between farms. A new New Holland T7.190 tractor and Challenge L4200 Plus front end loader has been chosen for its reliability and known performance in the Glen Collin operations. The new series T7.190 is 150 horsepower and has a Full Power Shift transmission operated through the Sidewinder II Armrest and Intelliview screen the same as the New Holland T7.220 delivered to the farm in 2014. Glen Collin also has a New Holland T6080 and the family has been dealing with Goodwin Kenny since 1969 when Jim's father, Bob Young, bought a Fiat 50C1, the first of many tractors. Pictured with the New Holland T7.220 and the T7.190 are Jim and Richard Young.



Wool, Fashion and Tractors

Leo & Judy Blanch, Westvale Stud, Wollun have been long time customers of Goodwin Kenny, mainly dealing with our Armidale branch for parts. They are also wool growers and long time supporters of The Australian Wool Fashion Awards which their grand-daughter Lucy Virgona won in 2015. They are pictured at right with Lucy and their daughter at TAWFA 2016 where they had a conversation with Susan Goodwin - mainly about wool and the fashions. Some days later Leo arrived at the Tamworth branch in search of a cab tractor so he could spend a bit more time "in comfort" as opposed to being out in the elements on his old Massey Ferguson 393. After considering a number of options Leo and Judy



decided to purchase a New Holland TD5.110. The TD5.110 has been chosen as a good basic tractor for general farm work, feeding, cleaning up fallen timber with the new Bull Blade Root Rake and some fencing. The tractor has a Challenge AP35s Front End Loader which is operated from the factory fitted Joystick on the RH Side console and together with the Hydraulic Forward/Reverse shuttle makes loader work very easy. Leo is pictured at delivery and installation with his employees Scott Matthews & Brad Thorpe.

Margo Duncan takes the fleet to 4 New Holland Tractors

After an exhaustive search and many thousands of kilometres looking at Used New Holland tractors for use on her Seaham farms in the lower Hunter Valley Margo decided to purchase a new New Holland T7.190 Classic Tractor. The T7.190 has 150 horsepower with a Powershift transmission and will save the farm staff moving tractors between farms for feeding round silage bales and operating a power harrow and slasher. Margo also purchased a Used New Holland T6030 tractor from Goodwin Kenny to help keep everything happening on the farms in a timely a fashion. Pictured at the delivery/installation with the New Holland Tractors on farm: T6020 Plus @ 112hp, T6030 Range Command @ 115hp, TM190 @ 190hp and the new T7.190 are Farm workers and Margo's Son in Law and Business Manager (Aaron Lieb) with Margo and one of her daughters, Kerrie, with two of the granddaughters.



Not in the photo is another pride of the Duncan Fleet - a Fiat 160-90 which will "never be sold". (Margo and her late husband Bruce are old friends of Tony Housden from Tocal days and Margo sought Tony's advice on tractors.)



New Holland 313 Mower Conditioner to Dungowan

Ivan and Matthew Mann have a program of keeping machines up to date and this year wanted a larger cutting width on their Mower Conditioner so they have chosen a New Holland 313 Centre Pull Discbine Mower Conditioner for their hay operations around Dungowan. The New Holland 313 is 4 metre (12') Cut with wider Rubber Chevron rollers and New Holland's true modular disc cutter bar. The Centre pull allows face cutting of a block and is ideal cutting round pivot circles. Matt and Ivan are pictured at the delivery of their machine which will be started soon.

GOODWIN KENNY

Tractor & Farm Machinery Dealers since 1962.

For all your Scheduled Services and Repair work on New Holland, Fiat, Ford, Case & Versatile Tractors, Balers and Haymaking equipment, Silvan Sprayers and all slashers - call our experienced team.

ARC RTA AIRCONDITIONING LICENCE AU1959



Ken Hatton
Tamworth

Service Manager at Tamworth. Over 10 years with Goodwin Kenny. Experienced with New Holland, Fiat, Case & Ford tractors & Air Cond.



Merv Leard
Tamworth

Over 19 years with Goodwin Kenny. Specialist with New Holland Balers, mower conditioners and haymaking.



Levi Alley
Tamworth

Commenced training as Apprentice in 2005 & now has over 10 years with Goodwin Kenny. All Tractors and licenced for Air Conditioning.



Nathan Keel
Tamworth

Commenced Mechanical Apprenticeship in 2014. Working with Merv to acquire knowledge of Balers & Haymaking gear.



Luke Wiegold
Tamworth

Luke completed his Work Experience with Goodwin Kenny last year & started the First Year of his Apprenticeship in 2016.



Lachie McArthur
Gunnedah

Lachie has completed the 4th Year of his Apprenticeship in 2015. He also now has an Air Conditioning Licence.



Josh Peake
Gunnedah

New to the Service Team at Gunnedah, Josh is keen to get to know more about the New Holland product and meet our customers.

POSITION VACANT
Apprentice Mechanic - Gunnedah
Applications can be emailed to gsgoodwin@goodwinkenny.com.au
Or post to **PO BOX 3488, WEST TAMWORTH 2340**

At the Tamworth Business Chamber 2016 Quality Business Awards

Susan & Ken Hatton, Nathan & Andrea Keel, Susan Goodwin, David Hartmann & Catherine Bourke, Luke Wiegold & Emily Hannan and Levi Alley all looking very smart. Goodwin Kenny was a Finalist in 3 categories - Excellence in



Customer Service in Trades & Services, Excellence in Customer Service Transport Sales & Service and Excellence in Community Involvement. **A wonderful recognition for the staff at Goodwin Kenny.**

0 % pa for T6000 tractor with RB Baler



Goodwin Kenny has stocks of tractors, balers and mower conditioners ready for the season. **From 15th August through to 30th September New Holland are offering ZERO % FINANCE** across the range of T6 Auto Command and T6000 tractors sold with a RB Round Baler. Machines must be settled by 31st December to be eligible and conditions apply. Purchasers also receive:-

3 year peace of mind warranty for T Series tractors
(1 year standard and 2 years Service Plus Protection Plan)

2 year peace of mind warranty for Round Balers
(1 year standard and 1 year Service Plus Protection Plan)

Call Tony Housden at Tamworth on 67655244 or Peter Kenny at Gunnedah on 67425777

New Challenge Loader for John Brand

After buying a good model used tractor in great condition, John realised the Case MX110 could be a lot more versatile with a Front End Loader fitted. A Challenge 3821 loader has been installed complete with a seat mounted joystick, 4 in1 bucket and Hydro Ride loader suspension. The Hydro ride takes most of the shock and bang out of the loader and tractor while operating around the farm. Pictured is John Brand with his new loader.



Challenge
Implements

Bogballe Spreaders - (Pronounce it "Bo-Bali")

Recent sales of Bogballe spreaders in Tamworth & Gunnedah have reinforced the quality of the machine and the quality of the spreading being achieved. A 6 tonne, a couple of 3 tonne and a couple of 2 tonne machines with various levels of technology are currently being used in our area to spread Urea quickly and accurately to take advantage of the rain. These high quality twin disc spreaders are made in Denmark and have been available in Australia for some years, with a range from 0.5 tonne up to 6 tonne, these 3 point linkage machines can achieve precision application over spreading widths from 10 metres through to 42 metres.

The range of options from basic manual rate adjustment through to computerised section and placement control with GPS operation is extensive.

Both our Tamworth and Gunnedah branches have stock.



bogballe

Are you looking for parts for older balers or cheaper parts?

We have some used and "new" old stock parts for:
New Holland 317 Small Square Baler, New Holland Super 417 Baler,
New Holland BB940AP Big Square Baler, SIP 470 Rake
Call Tamworth Spare Parts 6765 5244



GOODWIN KENNY

Tractor & Farm Machinery Dealers since 1962

For all your Spare Parts and great service from our experienced team



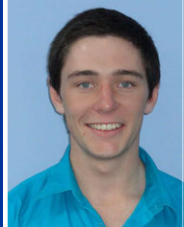
David Hartmann
Tamworth

Over 9 years with Goodwin Kenny. Over 35 years in Ag industry. Experienced with New Holland, Case, Ford, John Shearer & Silvan.



Peter Mackay
Tamworth

Over 9 years with Goodwin Kenny. Many years in Council & Private Business. Experienced with New Holland, Fiat, Ford, John Shearer & Silvan.



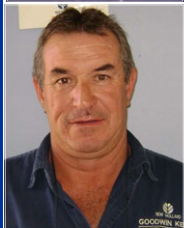
Paul Murphy
Tamworth

Paul commenced work with the Tamworth Spare Parts team in February and is new to the Ag industry so he will have a lot to learn from David and Peter.



Mark Kenny
Gunnedah

Over 36 years with Goodwin Kenny. Experienced with New Holland, Versatile, Fiat, Simplicity, Gyrat, Connor Shea, John Shearer.



Ken Mack
Gunnedah

Nearly 15 years with Goodwin Kenny experienced with New Holland, Gyrat, John Shearer, Howard, Morris, Silvan & Simplicity.



Keith McPhie
Armidale

Over 13 years with Goodwin Kenny. At Armidale - a wide range of parts: Filters, Oils, Twine, Slasher Blades, Bolts & Nuts Points, BareCo, Silvan, SXM

***AGPOINT *BARECO *BOGBALLE
*CHALLENGE *DAVEY AFM
*DAVIMAC *GREAT WESTERN TILLAGE
*GYRAL *HUSTLER *JANKE
*JARRETT *JAYLOR *McHALE *MURRAY
*HARROWS *NEW HOLLAND *SILVAN
*JOHN SHEARER *SIMPLICITY *SIP
*SXM *SUPERIOR *TAARUP *VICON**

246 Bridge St. **TAMWORTH**
(02) 6765 5244
42 Mullaley Rd. **GUNNEDAH**
(02) 6742 5777
139 Miller St. **ARMIDALE**
(02) 6772 8124
www.goodwinkenny.com.au



Our New Holland Parts Catalogue for July - October 2016 has now been printed.

Call in to browse through the catalogue.

View the catalogue on-line via the New Holland Parts Website www.newhollandparts.com.au and search for a dealer by postcode 2340 or 2380.



TWINE and NET

Part No. 73322219	Small Square Twine 4480 metre	\$82.47 inc GST (YELLOW)
Part No. 87463635	Small Square Twine 4000 metre	\$105.24 inc GST (ORANGE)
Part No. 73322218	Large Square Twine 2200 metre	\$108.03 inc GST (YELLOW)
Part No. 87463634	Large Square Twine 2200 metre	\$109.32 inc GST (ORANGE)
Part No. 73322220	Round Baler Twine 9200 metre	\$70.52 inc GST (YELLOW)
Part No. 87463636	Round Baler Twine 9000 metre	\$92.92 inc GST (ORANGE)
Part No. 73322221	Q-Net 3300 metre x 1.23 metre	\$451.77 inc GST
Part No. 73322131	INFINET 3600 metre x 1.23 metre	\$526.27 inc GST
Part No. 73340502	BLACK NET 1500 metre x 1.2 metre	\$393.21 inc GST



New Holland Hay Moisture Tester

DHT-1 18" Probe Hay Moisture Tester.

Direct readout for % moisture and temperature.

Part No: FM07100DS \$355.00 inc GST

New Holland Round Baler Belts
Always Stocked.
Belts for other Baler Brands Available.
Specialty Belts made to order.



Limited Stock Special
205 litre SUPERGOLD Engine Oil

SPECIAL \$847.00

List \$937.00

Prices include GST



Fuchs Renolit EP 00 - 20L "Self Levelling" Grease

Industrial grease with extreme pressure additives for severe service and high load applications, recommended for lubrication of plain and roller bearings, open and closed gear boxes and in centralised lubrication systems especially where good pumpability is required.

Part No: 87439084 \$179.58 inc GST



Hay & Silage Improver

By creating lactic acid more rapidly, more energy and protein is preserved in hay and silage for increased milk and meat production.

Available in 20 Litre Drum.

We buy directly from the Importer - Saving you \$\$\$

Part No: HY-SI20 \$346.50 inc GST

Tapex Triowrap

Triowrap is a high performance multi-layered silage film formulated to withstand our harsh climatic conditions.

Part No: TRIOG750 \$162.29 inc GST



Ideal for Round & Square Bales

Hay Tines In Stock

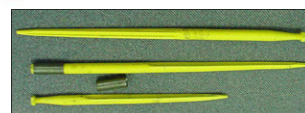
For 'Wheel' Type and Older Rollbar Rakes.

Come in and see what we can source for your Rake.



Hay/Silage Tines

Available for Conus I and II fittings.

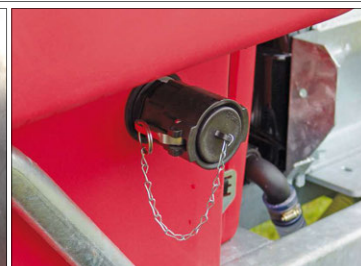


Venturi Fill Kit

Part No: NASPRB35TGS-1

List \$324.50 inc GST

Special Price \$295.00 inc GST



We still have HOWARD Spare Parts in STOCK

OPEN SATURDAY MORNINGS - Tamworth Branch from 9am to 12pm. Gunnedah Branch from 8:30am to 11:30am.

MONTHLY WINNERS Congratulations to our New Holland Beanies Winners:

Hubbard P/S - Spring Ridge, B S Penrose - Tamworth, W & M Lord & Sons - Quirindi
This month we have 3 **NEW HOLLAND CAPS** to give away - simply return your payment by **Monday 26th September 2016** to go into the draw.
We would also remind customers that we accept Visa & MasterCard over the phone & Debit cards may be used at all our Branches.



All payments by these methods are included in the monthly draw.
Electronic/Internet Payments on the last day of the month cannot be allocated until the next day - it would assist us greatly if payments could be made prior to the last day of the month to allow receipting and allocation to accounts prior to Month end.....thank you.

For Internet Banking, our bank account details are:

Commonwealth Bank BSB: 062 602 Account Number 00 272 029

Please use your account number, name or invoice number as a reference.

Keeping you up-to-date:

CON SMIT retires

Con was born in 1938 in Holland. At the start of his working life Con worked for 2 years doing metal work for an Engineering Firm. From there he went to the Navy and had 6 months military training and then 6 months engineering training in Steam and Engine, then onto Ships and Light Cruisers. Con then went to Dutch New Guinea for 1 & 1/2 years doing engine overhaul work, then back to Holland and spent time fixing Diesel pleasure craft for the Commander of the Dutch Navy. He then returned to New Guinea with a destroyer about the time Indonesia was trying to infiltrate Dutch New Guinea. In 1963 he came to Australia and worked as a fettler at Werris Creek putting sleepers on the railway line to Binnaway. Con then returned to Sydney to work for Waugh and Josephson at Petersham where his work was to overhaul engines and gearboxes and recondition turbos. He also worked in the Snowy, and then to Western Australia to Mount Newman for a year. After the tin mine closed he came back to New South Wales and from 1984 Con was employed at Goodwin Kenny. Over 32 years at Goodwin Kenny Con has worked on countless Fiat Tractors and Crawlers, becoming expert in these models. Con is well regarded by customers and has worked all over northern New South Wales from Moree to Goodooga to Mullaley to Walcha.

We thought that Con's journey could be best summed up by a poem written by his wife Jenny Smit in 2012.

Con came to Australia from over the sea
In the year of our lord 1963
He's worked all over our sunny lands
From the high mountains to the hot, dry sands
Here in the east and way over in the west
Before coming to Tamworth to finally nest.

Con learnt his English from fettlers at Werris Creek
So if you've ever heard him speak
You'll notice his language can be kind of blue
(Especially if he's having a problem or two)
And when the problems get all too much
All that swearing just changes to Dutch.

When back in January 1984,
Con came through Goodwin Kenny's door
The equipment wasn't quite the same
But Con was always fairly game
And saw it as a chance to grow
When Aub decided to give him a go.

Con's jobs have covered quite a range,
From engine overhauls to a simple oil change,
There's been mystery misses, clunks and pings
And all sorts of other unexplainable things,
But Con has pretty good diagnostic skills
And gets to the bottom of these mechanical ills.

Now the job of filling out his time card
Is something that Con finds really hard
He thinks "It's not a task for me"
I'm sure Sue and the office girls all agree
For his writing is usually pretty bad
And the Dutch/English spelling is really mad.

Con's work ethics comes from his navy days
And I'm afraid he's very set in his ways
He's thorough and careful, and sets his own pace
And it doesn't help to get in his face
(Aub found this out, and later Peter too)
For Con just focuses on seeing the job through.

Con has decided to retire to attend to a long list of jobs at home and spend time with his family.

It is very hard to sum up the contribution Con has made at Goodwin Kenny or the gratitude we have for his expertise, good humour and caring nature (as well as his "Dutch" swearing).



Con and Jenny Smit

There are not too many men who get away with calling the boss "Darling" - especially when he is in trouble for putting grease everywhere! We hope Con has a long and happy retirement.

..Susan Goodwin



Susan Goodwin presenting
Con Smit with his Long Service

JOKE OF THE MONTH

aunty acid

**A truck full of
Viagra
was stolen
today.**

**Police are
looking for
hardened
criminals.**



For your Calendar

Walcha Garden Club

proudly present six beautiful cool climate gardens.



Visit Orandumbe, Sallywood, Branga Plains (2 gardens), Prairie Fields and Bungara.

**Saturday 19th November
Sunday 20th November**

More info: Diana Lisle
67773948 / 0429 799083
or email

walchagardenclub@gmail.com
for a Brochure and Map.

Nundle Art Exhibition & Sale

Opening night 11th November
Viewing & Sales
12th-13th November

The Rotary Dungowan Village Fair and Motor Show at Dungowan Recreation Ground

15th and 16th October

with a Tractor Trek on

Friday 14th October.

dungowanvillagefair.com.au or
call John Barwick 0427 691535



GOODWIN KENNY

Tamworth • Gunnedah • Armidale



NEW & USED EQUIPMENT
SEPTEMBER 2016



246 BRIDGE STREET, TAMWORTH - 02 6765 5244 TONY HOUSDEN: 0437 337 131



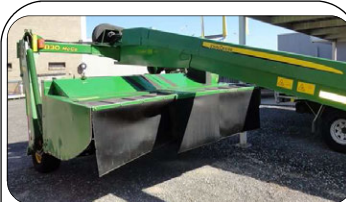
Massey Ferguson 393

Challenge Loader, Bucket, Pallet Forks, Blade, Well maintained, been through workshop, 3870 hrs. 83hp Engine, 4wd, Creeper Gear.
\$ P.O.A



NEW HOLLAND BR740A

Round Baler, workshop checked, New belts, chains and sprockets.
\$30,000.00 inc GST



JOHN DEERE 830

Mower Conditioner, 2010 Model, Centre Pull, Disc Mower with Rubber Conditioning Rollers Very Good Condition, Fully serviced.
\$33,000.00 inc GST



MULLER 15 BALE ACCUMULATOR

2015, Demo machine Folding Side Table for easy transport or storage. Painted New Holland Yellow. 12 Months Warranty.
\$18,920.00 inc GST



NEW ALCE 1950 MULCHER

Rear wheels & wear sheet
List Price \$11,698.00

SPECIAL \$9,680.00 inc GST



NEW HUSTLER SL360X FEEDER

\$9,900.00 inc GST

visit: www.hustlerequipment.com.au



3PL Bale Spike
\$2,695.00



Pallet Fork & Tool Carrier
\$2,530.00



Large Bale Spike
\$2,090.00

All prices include GST



Grab \$3,740.00



Counterweight
\$2,035.00



Quick Coupler
Euro \$1,683.00



Options available for special loader hitch types

SIP 360/10 Rake \$12,650.00



SIP

Jarrett RB6-75 Slasher \$4,290.00



bagballe



DIGGA



Digga P.H.D.
\$3,080.00

Silvan SX500 338 Litre Spreader \$1,045.00



HARROWS



CONSIGNMENT MACHINES TAMWORTH



CHALLENGE SILAGE SHEAR 140SS

Silage Grab, hardly used.
\$4,400.00 inc GST



SUPERIOR 8' LCT94 ROTOR SLASHER

2 Rear Wheels, 130HP, 3PL Mount, had little use. **\$8,800.00 inc GST**



NEW HOLLAND 317 BALER

Good condition.
\$7,500.00 inc GST

GOODWIN KENNY

Tamworth • Gunnedah • Armidale



NEW & USED EQUIPMENT
SEPTEMBER 2016



42 MULLALEY ROAD, GUNNEDAH - 02 6742 5777 PETER KENNY: 6742 4502 A/H 0427 688 454



NEW MACHINE SPECIALS

NEW HOLLAND IRRIGATION ENGINE Iveco 8.7 Litre Motor, 383HP @ 2100RPM **\$51,700.00**

SILVAN 31RS6G SLASHER
6' Cut,
75HP Gearbox
\$4,300.00



NEW HOLLAND T8030

2011 Model, 273HP, 3750 hours.
Tyres: Front 480/70R34, Rear 480/80R50
Rear Duals Avail., 19x4 Powershift 50km/h
Transmission, Suspension Front Axle.

\$126,500.00 inc GST



JOHN DEERE 5101E

100HP, FWA, CAB, 12 x 12 Transmission,
2 Remotes, JD563 Loader, 2000mm Light
Material, 1860mm Standard Bucket,
Square Bale Spike/Pallet Forks, 1697 hours,
Very Tidy. **\$62,700.00 inc GST**



NEW BOGBALLE M2 PLUS SPREADER

2.9m wide - fill easily with a Tractor
bucket, Auger or Bulka bags. Can be fitted
with Calibrator Icon speed relative rate
controller, Vanes to suit 24m, 36m or 42m
Manual Border/Edge Spreading.



NEW HOLLAND TR70

22' open front & Comb Trailer
Twin Rotor Combine.



NEW HOLLAND TR85

Twin Rotor Harvester
NH705 25' Bat Reel.



NEW HOLLAND TR89

Twin Rotor, H/Static Drive,
Straw Chopper, 72C O/F Bat Reel.



NEW HOLLAND TR98

Combine Harvester with NH971
Bat Reel Front &
Inverell Welding Comb Trailer.

\$\$\$ HEADER SALE



139 Miller Street,
ARMIDALE
02 6772 8124
Keith McPhie

NEW
Carryalls,
Drag Harrow, Slashers,
Pipe Layers & Rippers.



CASE MXU110

116HP, FWA,
Cab, 16x16 Semi
Powershift Trans
with new
Challenge FEL
and 4 in 1 Bucket.
\$79,000.00



JARRETT MDX 150 SLASHER

In good condition
and very well
maintained.
\$1,870.00



YEOMANS PLOUGH

7 Tine Chisel
Plough, Shank
Pot Seeder on 7
Tines. **\$4,000.00**

CONSIGNMENT MACHINES ARMIDALE



SHIBAURA ST333

33HP,
Very Tidy
Tractor,
Always
Shedded.
410 Hours.
\$16,500.00



SILVAN CARRYALL

4 Foot with Timber Floor.
\$250.00



5 TYNE CULTIVATOR

Heavy Duty Coil Tynes
Chisel Points. **\$1,200.00**



SILVAN 200 LITRE AIRBLAST SPRAYER

Never had
chemical
in it.

Used on organic grapes.
Very tidy, Only 50 hours use.
\$3,300.00

All prices include GST

AGPOINT • BARE-CO • BOGBALLE • CHALLENGE • DAVEY AFM • DAVIMAC • GREAT WESTERN TILLAGE
GYRAL • HUSTLER • JANKE • JARRETT • JAYLOR • K-LINE • McHALE • NEW HOLLAND • SILVAN
JOHN SHEARER • SIMPLICITY AUSTRALIA • SIP • SOUTHERN CROSS AG MACHINERY • SUPERIOR • TAARUP • VICON