



1960 FORDSON DEXTA TRACTOR

It is always great to see old tractors lovingly restored. It has taken 11 years for this Fordson Dexta tractor to be finished and now it is very proudly displayed by its owners Ken and Denise Roach from Somerton. The tractor was sighted on the side of the Boggabri Road, Gunnedah in 2007 and purchased from Bill Davis. It was in pretty bad condition and was not going. Since then the engine has been fully rebuilt. New mudguards, nose cone and front grilles were sourced from England. Two years into the restoration and Ken was taking the Fordson Dexta to Tractor Treks and Machinery Rallies and he did this for about 7 years. Last year, two good mates from South West Rocks, Mal Cameron and George Proctor, decided they wanted to paint it and Ken decided he was not going to get around to it, so the painting commenced. (I believe the paint and some other bit and pieces were sourced from Goodwin Kenny). In May this year Ken arrived at the Quirindi Rally and the tractor was there as a surprise for him - all finished! He said "Tears all round and a lot of good times ahead."



I had seen the tractor at the Moonbi Kootingal Motor Shows over the years and having known Denise for many years, as a Hairdresser at Belmore Cottage Hair Salon, she mentioned the tractor when I was last there and showed me the photos. Ken and Denise then brought the photo album in to show me and also mentioned that Ken's brother, Russell Roach, who is now 92 had been a customer of Goodwin Kenny. Our records show Russell purchased a Fiat 513R tractor on 2nd January 1963 & was the second customer of Goodwin Kenny after they commenced business in November 1962.



The EOFY signs are up! The tractors are in stock! GREAT DEALS!
Choose from **DISCOUNT** prices or special **FINANCE** offers on selected models, but be quick - 3 tractors have already sold!

TRACTOR SPECIALS - STOCK ONLY

NEW HOLLAND TT4.75 - 4WD ROPS, Diesel Engine - 75 HP, Mechanical Fuel Pump, 12 Forward x 12 Reverse Synchro Shift Transmission, **Power shuttle** Forward/Reverse, Single Set Hydraulic Rear Remotes, ROPS frame with Protective Canopy, Vinyl covered Spring Suspension seat, Tyres: Front 11.2 x 24 - Rear 16.9 x 30

Fitted with **Challenge AP32 Plus Front End Loader** - 3.2m lift height to pivot pins, Joystick, Hydro Ride Loader suspension system, 1860mm (6') 4in1 Bucket, Challenge Full Mesh Grille Guard, Lift Capacity of the Front End Loader is R.O.L. 603kg

Delivered within 150km of Tamworth or Gunnedah - \$52,305.00 inc GST (No Trade)

NEW HOLLAND TD5.75 - 4WD CAB, Diesel Engine - 75 HP, 12Fx12R Mechanical transmission, Hydraulic Power Shuttle F/Reverse, 2 sets Remotes, 2 speed PTO Fitted with **Challenge AP35 Plus Front End Loader** - 3.5m lift height to pivot pins, Hydro Ride Loader Suspension, 1860mm (6') 4in1 bucket and Grille Guard.

Delivered within 150km of Tamworth or Gunnedah - \$71,390.00 inc GST (No Trade)

NEW HOLLAND T4.115 - 4WD, Cab, 114 horsepower, 4 cylinder Turbocharged/ Intercooled, 24 x 24 - 40 kph, Dual Command transmission, Electro Hydraulic Forward Reverse shuttle, Tyres: Front 440/65R24 & Rear 540/65R34, fitted with **Challenge AP35 Plus Front End Loader** with HydroRide, Grille Guard and 2160 mm 4in1 bucket.

Delivered within 150km of Tamworth or Gunnedah - \$94,160.00 inc GST (No Trade)

NEW HOLLAND T6050 LS - 4WD, Entry level 6 Cylinder Engine, 126 Base HP, Mechanical Pump Engine - Turbo charged and Intercooled, 106 HP at PTO, Tier 3 Emission Level - No Ad Blue, 250 litre Fuel Tank, 16 x 16 semi-powershift transmission, Low profile roof with fixed vision panel for loader visibility, Tyres: Front 420/70R28 - Rear 520/70R38 fitted with **Challenge AP38 Plus Front End Loader** - 3.8m lift height to pivot pins, Cable operated Joystick - floor mounted, Grille Guard, 3rd Function and Soft Ride Loader suspension, 2160mm 4in1 Bucket.

Delivered within 150km of Tamworth or Gunnedah - \$116,710.00 inc GST (No Trade)

NEW HOLLAND T7.175 POWER COMMAND - 140 HP, 19 x 6 Full Powershift Transmission, 40K, 480/70R28 & 580/70R38 Tyres, Standard Steer, Engine Power Management for PTO and transport,

Fitted with **Challenge L4200S Plus Front End Loader** and 2460 mm 4in1 Bucket
Delivered within 150km of Tamworth or Gunnedah - \$163,130.00 inc GST (No Trade)

New Holland T Series Tractors are covered by New Holland's
2 Year/2,000 hour Standard Factory Backed Warranty
(Whichever occurs first) *Terms & Conditions apply




**30% Deposit
1.95% PA
Over 3 years**

THE REAL DEAL
EOFY FLOOR STOCK CLEARANCE



0%* ON SELECTED MODELS!
P.A. FINANCE

There's never been a better time to get an EOFY deal at Goodwin Kenny with great deals across all current floor stock. Purchase a new machine before June 30 and you'll also enjoy an unbeatable low finance rate of 0%* across selected models plus a factory backed 2-year warranty. New Holland's real deals gives you unreal savings.

FACTORY BACKED WARRANTY | **VALID UNTIL 30TH JUNE 2018** | **TRUE BLUE**

Prostate Cancer Foundation of Australia Major Partner | **CNH INDUSTRIAL CAPITAL**

GOODWIN KENNY

Tractor & Farm Machinery Dealers since 1962.

For all your Scheduled Services and Repair work on New Holland, Fiat, Ford, Case & Versatile Tractors, Balers and Haymaking equipment, Silvan Sprayers and all slashers - call our experienced team.

**ARC RTA AIRCONDITIONING LICENCE AU1959
MOTOR DEALERS REPAIR**



Ken Hatton
Tamworth

Service Manager at Tamworth. Over 12 years with Goodwin Kenny. Experienced with New Holland, Fiat, Case & Ford tractors & Air Cond.



Levi Alley
Tamworth

Commenced training as Apprentice in 2005 & now has over 12 years with Goodwin Kenny. All Tractors and licenced for Air Conditioning.



Nathan Keel
Tamworth

Nathan had 4 years experience as a contractor before he commenced his TAFE & Baler/Haymaking training with us in 2014.



Luke Wiegold
Tamworth

Luke has successfully completed his 2nd Year Mechanical Apprenticeship & he starts this year as a 3rd Year Apprentice.



Cooper Patterson
Gunnedah

Cooper has successfully completed his 1st Year Mechanical Apprenticeship & he starts this year as a 2nd Year Apprentice. Cooper is a Gunnedah lad.

Position Vacant - SERVICE TECHNICIAN - GUNNEDAH

Duties include Service repairs on tractors, combine harvesters, sprayers and haymaking equipment. Applications can be sent by email to: sgoodwin@goodwinkenny.com.au Or call Peter Kenny (02) 6742 5777

Tamworth Machinery Sales
call Susan Goodwin on (02) 6765 5244
Or Tony Housden on Monday, Wednesday & Friday from 8.00 am to 3.30 pm
or email: tamsales@goodwinkenny.com.au
Gunnedah Machinery Sales
call Peter Kenny on (02) 6742 5777
Email: gunsales@goodwinkenny.com.au



Winter MAINTENANCE SPECIAL

So now is the time to get your tractor or baler serviced -

Contact:

Ken Hatton at Tamworth
on 6765 5244

Mark Kenny at Gunnedah
on 6742 5777



Regardless of hours worked, your tractor should be serviced every 12 months

SAVE 10%
On Filters, Oils, Belts, Labour & Travel in JUNE



Burder Industries builds a wide range of Agricultural materials handling equipment – Buckets, forks, hay handling and the Titan manufacturing division builds a range of specialist trailers from the RM Williams touring truck trailer to the very handy drop to the ground self-loader – very handy for so many uses. For the product range call us or visit www.burder.com.au



15% OFF RRP

END OF SEASON RUN OUT SALE!

AUSTRALIA'S FAVOURITE PASTURE HARROWS

Enquire with your local Murray dealer or give us a call on (03) 9791 7033 murrayag.com.au

*This offer is valid until the 30th June 2017

| SERIES 05 PASTURELAND HARROW | | | | | |
|---|-------------|------------|------------|------------|--|
| Drop Type - Standard 0.76m (2'6") Deep Mesh Chain | | | | | |
| Model | Coverage | RRP | 15% off | Savings | |
| 5020 | 1.52m (5') | \$1,685.20 | \$1,432.42 | \$252.78 | |
| 5006 | 1.83m (6') | \$2,085.00 | \$1,729.75 | \$355.25 | |
| 5021 | 2.44m (8') | \$2,658.70 | \$2,259.90 | \$398.81 | |
| 5022 | 3.04m (10') | \$3,429.80 | \$2,915.33 | \$514.47 | |
| 5023 | 3.65m (12') | \$4,209.70 | \$3,578.25 | \$631.45 | |
| 5024 | 4.57m (15') | \$5,231.60 | \$4,446.86 | \$784.74 | |
| 5003 | 6.09m (20') | \$7,063.30 | \$6,003.64 | \$1,059.67 | |
| Hoist Lift Type - Standard 0.76m (2'6") Deep Mesh Chain | | | | | |
| Model | Coverage | RRP | 15% off | Savings | |
| 5025 | 1.52m (5') | \$2,667.50 | \$2,267.38 | \$400.13 | |
| 5007 | 1.83m (6') | \$3,017.30 | \$2,564.71 | \$452.60 | |
| 5026 | 2.44m (8') | \$3,641.00 | \$3,094.05 | \$546.95 | |
| 5027 | 3.04m (10') | \$4,483.50 | \$3,772.73 | \$710.77 | |
| 5028 | 3.65m (12') | \$5,216.40 | \$4,435.64 | \$780.76 | |
| 5029 | 4.57m (15') | \$6,572.50 | \$5,586.63 | \$985.88 | |

| SERIES 20 PASTURE HARROW | | | | | |
|---|-------------|---------------|------------|------------|----------|
| Drop Type - 3 Rank sections and Standard 0.76m (2'6") Deep Mesh Chain | | | | | |
| Model | Description | Coverage | RRP | NEW RRP | Savings |
| 20001 | 3 Sections | 2.59m (8'6") | \$2,492.60 | \$2,492.71 | \$428.89 |
| 20002 | 4 Sections | 3.45m (11'4") | \$4,183.80 | \$3,553.73 | \$630.07 |
| 20003 | 5 Sections | 4.31m (14'2") | \$5,184.50 | \$4,408.53 | \$775.97 |
| 20004 | 6 Sections | 5.18m (17') | \$6,181.20 | \$5,322.02 | \$859.18 |
| Hoist Lift Type - 3 Rank sections and Standard 0.76m (2'6") Deep Mesh Chain | | | | | |
| Model | Description | Coverage | RRP | NEW RRP | Savings |
| 20240 | 3 Sections | 2.59m (8'6") | \$3,981.40 | \$3,341.69 | \$589.71 |
| 20241 | 4 Sections | 3.45m (11'4") | \$5,169.00 | \$4,385.15 | \$773.85 |
| 20242* | 5 Sections | 4.31m (14'2") | \$6,543.90 | \$5,562.22 | \$981.68 |

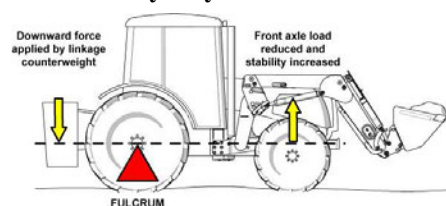
3Point Linkage Counterweight - What is it? Why do you need it?

Serious lifting machinery has built-in counterweights – think about a Forklift, Telehandler or an Excavator – they all have a great big cast iron block built into the rear of the machine to counterbalance the weights being lifted on the front. We take a farm tractor which is designed to pull, put a front end loader on the front and then try to lift with it, while there is some weight in the rear end of the tractor it is generally insufficient.

All quality Front End Loaders list a Rated Operating Load with a 3pl Counterweight – by hanging the weight on the linkage – it pivots over the rear axle and takes weight off the front axle as the loader tries to lift. Water in the tyres or Cast Iron weights on the rear wheels does not help, in actual fact it INCREASES the weight load on the front axle with only a small increase in stability.

By increasing the weight overhanging the rear axle the stability of the tractor increases, as the loader lifts, due to the change in the centre of gravity. The benefits are very clear – Safer and easier operation, reduced wear and stress on the front axle/tyres/steering etc.

Call us to get the correct information on how to setup your 3 Point Linkage Counterweight.



Contact MATT FORSYTHE 0428 324 493
For NEW Hay Accumulators and Grabs - delivered and set up in paddock -
For Repairs of Accumulators and Grabs



GOODWIN KENNY

Tractor & Farm Machinery Dealers since 1962.

www.goodwinkenny.com.au

For all your Spare Parts and great service from our



David Hartmann
Tamworth

Over 10 years with Goodwin Kenny. Over 35 years in Ag industry. Experienced with New Holland, Case, Ford, John Shearer & Silvan.



Peter Mackay
Tamworth

Over 10 years with Goodwin Kenny. Many years in Council & Private Business. Experienced with New Holland, Fiat, Ford, John Shearer & Silvan.



Neil Wilkinson
Tamworth

Over a year with Goodwin Kenny. Neil has prior experience as an Automotive Technician and Agricultural Parts Interpreter.



Mark Kenny
Gunnedah

Over 36 years with Goodwin Kenny. Experienced with New Holland, Versatile, Fiat, Simplicity, Gyrat, Connor Shea, John Shearer.



Ken Mack
Gunnedah

Nearly 15 years with Goodwin Kenny experienced with New Holland, Gyrat, John Shearer, Howard, Morris, Silvan & Simplicity.

246 Bridge St. **TAMWORTH** (02) 6765 5244
Email: tamparts@goodwinkenny.com.au

42 Mullaley Rd. **GUNNEDAH** (02) 6742 5777
Email: gunparts@goodwinkenny.com.au



SILVAN V60 MOTION ACTIVATED SECURITY CAMERA

Compact and self contained surveillance device for covertly monitoring indoors and outdoor areas. Ideal for securing sheds, garages, workshops, livestock, foxes and wild dogs, machinery, tools and fuel tanks.



- RECORDS VIDEO AND STILL IMAGES
- STORES UP TO 3,400 IMAGES ON AN 8GB SD CARD (included)
- INCLUDES MOUNTING STRAP



STOP THEFT

FREE MOUNTING BRACKET - THIS MONTH ONLY

Stock Take Time again - so the Bargain Bins are being topped up at Tamworth & Gunnedah



You never know what you will find!



OUT NOW- Silvan Winter 2018 Catalogue
Valid until 30/06/18

Specials Include: Diesel Transfer Equipment, Sled Sprayers, Spray Booms & Accessories, Spray Guns, Lights & Beacons and More...



DON'T BE AUGHT OUT WITH A FLAT BATTERY!

We have a range of genuine New Holland Exide Batteries for your tractors and machinery.



POINTS AND DISCS IN STOCK

Scarifier, Combine, Trashworker, Chisel Plow Points, Sweeps, Discs for Connor Shea, Shearer, Jarrett, Davimac, IHC, Gyrat, Simplicity.



RAM SEAL KITS



PINS



HAY/SILAGE TINES

Made in Germany by SHW



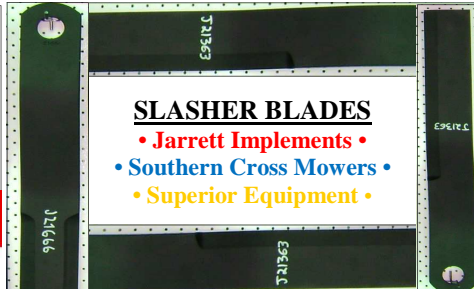
All Tines are made of Spring Steel.



OLD PARTS CLEAR OUT
Massey Ferguson
Lely Vermeer

...ALSO Horwood Bagshaw, Vicon, Versatile & Fiat...

CHECK with us before looking elsewhere!



SLASHER BLADES

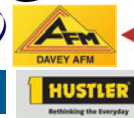
- Jarrett Implements •
- Southern Cross Mowers •
- Superior Equipment •

OLD NEW HOLLAND NET

Perfect for Fruit Trees and Fish Ponds or Turf.....\$100 Per Roll.



We are authorised dealer for:



OPEN SATURDAY MORNINGS - Tamworth Branch from 9am to 12pm. Gunnedah Branch from 8:30am to 11:30am.

For Internet Banking, our bank account details are:
Commonwealth Bank BSB: 062 602 Account Number 00 272 029

MONTHLY WINNERS

Congratulations to our New Holland
Plush Toy Tractor winners:

C Attard - Daruka,
Union Ag - Galong,
JGE & JA Barnier - Bective



This month we have some more
NEW HOLLAND CAPS to give away -
simply return your payment by 25th June
2018 to go into the draw. We would also
remind customers that we accept Visa & MasterCard over
the phone & Debit cards may be used at our Branches.
All payments are included in the monthly draw.

Account Enquiries: accounts@goodwinkenny.com.au



Joke of the Month - things are not always what they seem

Mildred, the church gossip and self-appointed monitor of the church's morals, kept sticking her nose into other people's business. Several members did not approve of her activities, but feared her enough to maintain their silence and distance. She made a mistake, however, when she accused Frank, a new member, of being an alcoholic after she saw his old pickup parked in front of the town's only bar one afternoon. She emphatically told Frank, (and several others), that everyone seeing it there would know what he was doing! Frank, a man of few words, stared at her for a moment and just turned and walked away. He didn't explain, defend, or deny. He simply said nothing. Later that evening, Frank quietly parked his pickup in front of Mildred's house, walked home... and left it there all night.You gotta love Frank!

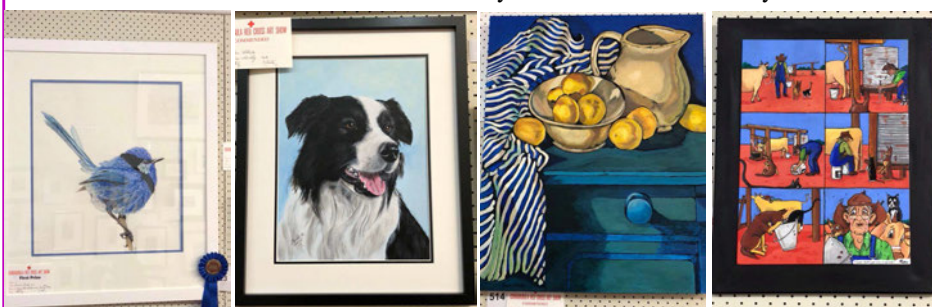
Enjoy a fabulous evening at the
Calrossy P & F Ball
Saturday 25th August from 6.30pm
Peter Smart Auditorium (Brisbane St Campus)
Entertainment by **SPLASHPOOL**
Tickets \$85 - Includes 2 course meal and
Champagne on arrival - **BYO beverages**
Dress code: Cocktail
Tickets available on Qkr (Calrossy Payments)
or from **Rob Collins on 0407 005 539**

Keeping you up-to-date: There always seems to be something on in Tamworth! Anna Davis and **Downtown Magazine** held their second **Dinner in White** on 5th May and this year it was held in Bicentennial Park in the centre of Tamworth.

A fun night with Gill and Cathy Neill and their husbands Richard and Doug Neill and a crowd of 150 people. Delicious food with a few drinks, a great band and good company. And an occasion to wear white? So I revived my

Debut dress with a leather belt and Boots! I last wore it when I was 17. It still fits!

Currabubula Red Cross Art Show was held on 17th to 20th May. Some of the group I paint with on Tuesday nights attended Opening Night and we enjoyed the exhibition. We were also able to do some shopping and purchased a number of hats from **jamb Millinery Designs** (0425 272155) as "modelled" in the photo. Jo Barr upcycles old hats and custom makes new felt hats and fascinators. Most of our group had entered paintings, and Barry Cord and Elaine Abberfield both sold paintings. I received a "Commended" in the **Local Artist** section for my "Stripes and Lemons" which was a lovely surprise, where the winner was Sophie Lockwood for "The Splendid Fairy Wren". Also "Commended" was Helen White for "Milly" and Kate Rutter for "Fly in the Milk".



Steve Prosser, Barry Cord, Fiona Little, Elaine Abberfield, Susan Goodwin, Cathy Neill, Doug Neill and Kate Cullen at Opening Night

Rotary Club of Tamworth Sunrise held their **HORROR BALL 2018** on Saturday 19th May at the Tamworth Town Hall. Again the "Casino" was in full swing with guests "gambling" to see which table could amass the most chips so their designated Charity would receive a donation. Our table did well, but sadly we were not the winners on the night. A fun night and a great way to raise some money for a good cause. Having fun with Doug & Cathy Neill, Declan Neill, Vicki & Chris Fay, Steve Prosser & Fiona Little, Alex Little & Laura Ness and Simone & Hayden Lewin. **Next month - looking forward to Frost over Barraba Art Show on 5th-7th July and Wean Picnic Races on 14th July.**

...Susan Goodwin

